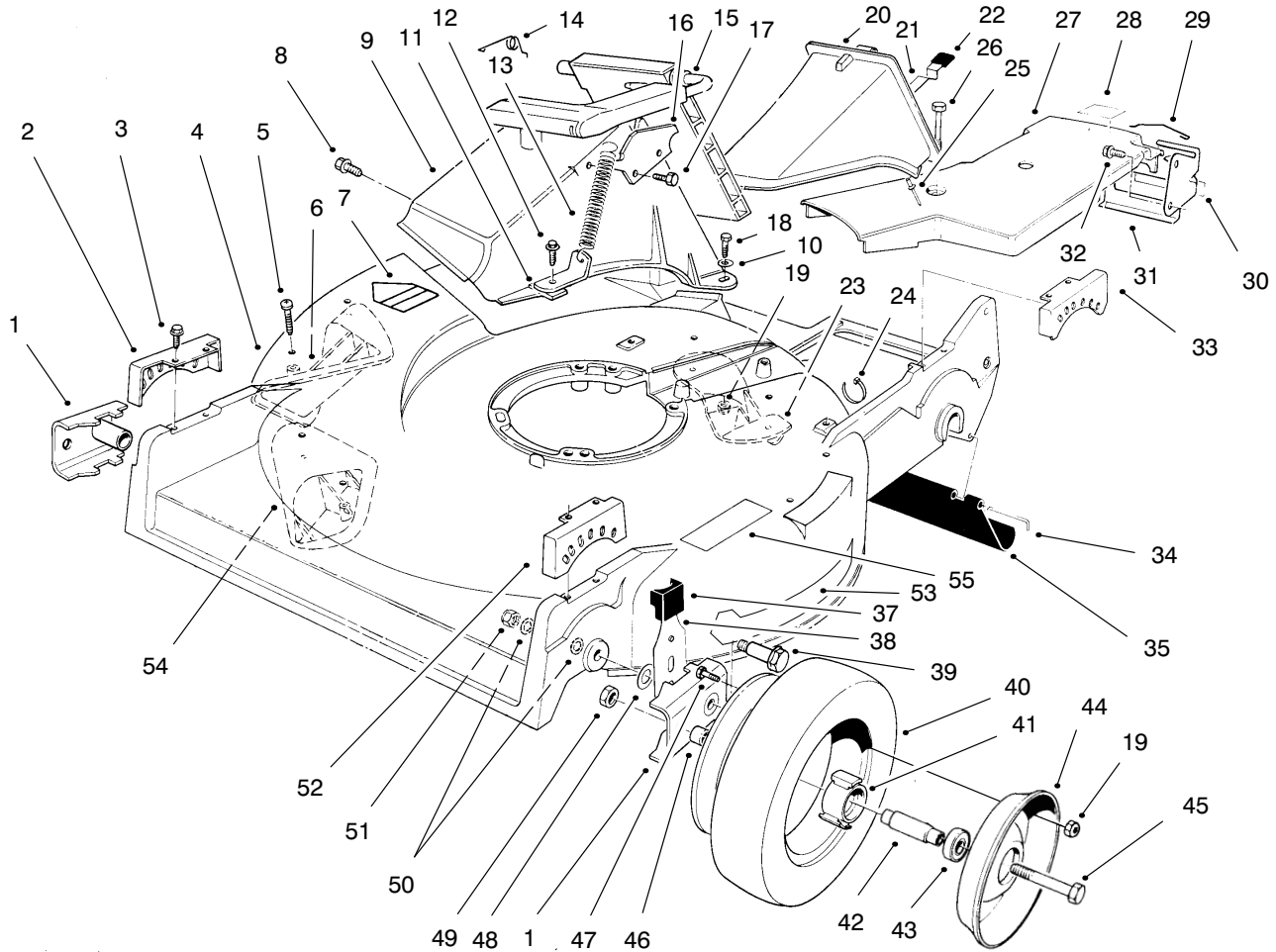




MODEL NO. 22040-8900001 & UP

**PARTS
CATALOG**

PROLINE 21"
Recycler® Mower



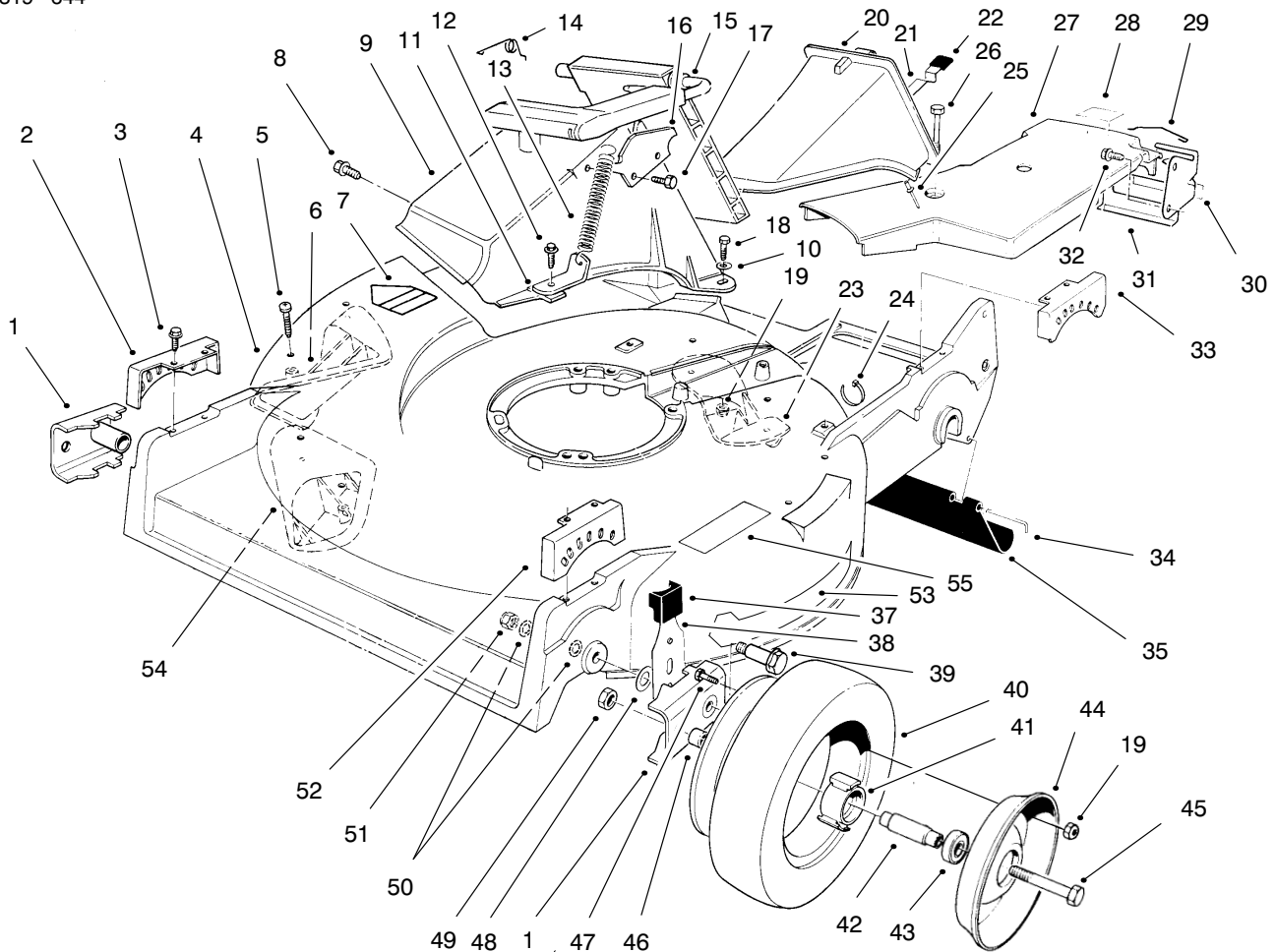
C-0660B

HOUSING ASSEMBLY

| Ref. No. | Part No. | Description | No. Used |
|----------|-----------|---|----------|
| 1 | 61-8300 | Pivot Arm Assembly | 2 |
| 2 | 49-8770 | Quadrant - Front R.H. | 1 |
| 3 | 49-2040 | Screw - Thread Forming | 8 |
| 4 | 98-7139 | Housing - Commercial (Incl. Ref. # 5-7, 23, & 54-55) | 1 |
| 5 | 32144-111 | Screw - Pan Hd. | 6 |
| 6 | 92-1730 | Kicker | 1 |
| 7 | 39-5770 | Decal - Danger | 1 |
| 8 | 46-6810 | Screw - Thread Forming | 1 |
| 9 | 82-9152 | Chute - Discharge | 1 |
| 10 | 3256-22 | Washer - Flat | 2 |
| 11 | 71-9350 | Bracket - Spring | 1 |
| 12 | 46-6811 | Screw - Thread Forming | 1 |
| 13 | 76-4660 | Spring | 1 |
| 14 | 80-3770 | Retainer - Door | 1 |

| Ref. No. | Part No. | Description | No. Used |
|----------|----------|--|----------|
| 15 | 93-7351 | Door Assembly | 1 |
| 16 | 93-3154 | Plate - Latch | 1 |
| 17 | 46-8090 | Screw - Self Tapping | 2 |
| 18 | 321-7 | Screw - Hex Hd. Cap | 2 |
| 19 | 3296-42 | Nut - Lock | 10 |
| 20 | 77-0500 | Plug - Discharge (Incl. Ref. #21, 22, & 25) | 1 |
| 21 | 76-4640 | Latch - Plug | 1 |
| 22 | 76-4650 | Grip - Latch | 1 |
| 23 | 92-1750 | Kicker | 1 |
| 24 | 3290-378 | Tie - Cable | 1 |
| 25 | 3295-35 | Rivet | 1 |
| 26 | 37-7260 | Screw - Special | 2 |
| 27 | 74-1770 | Cover - Belt | 1 |
| 28 | 52-2620 | Label - Grease | 1 |
| 29 | 46-7030 | Retainer - Cable | 1 |

*Not Illustrated

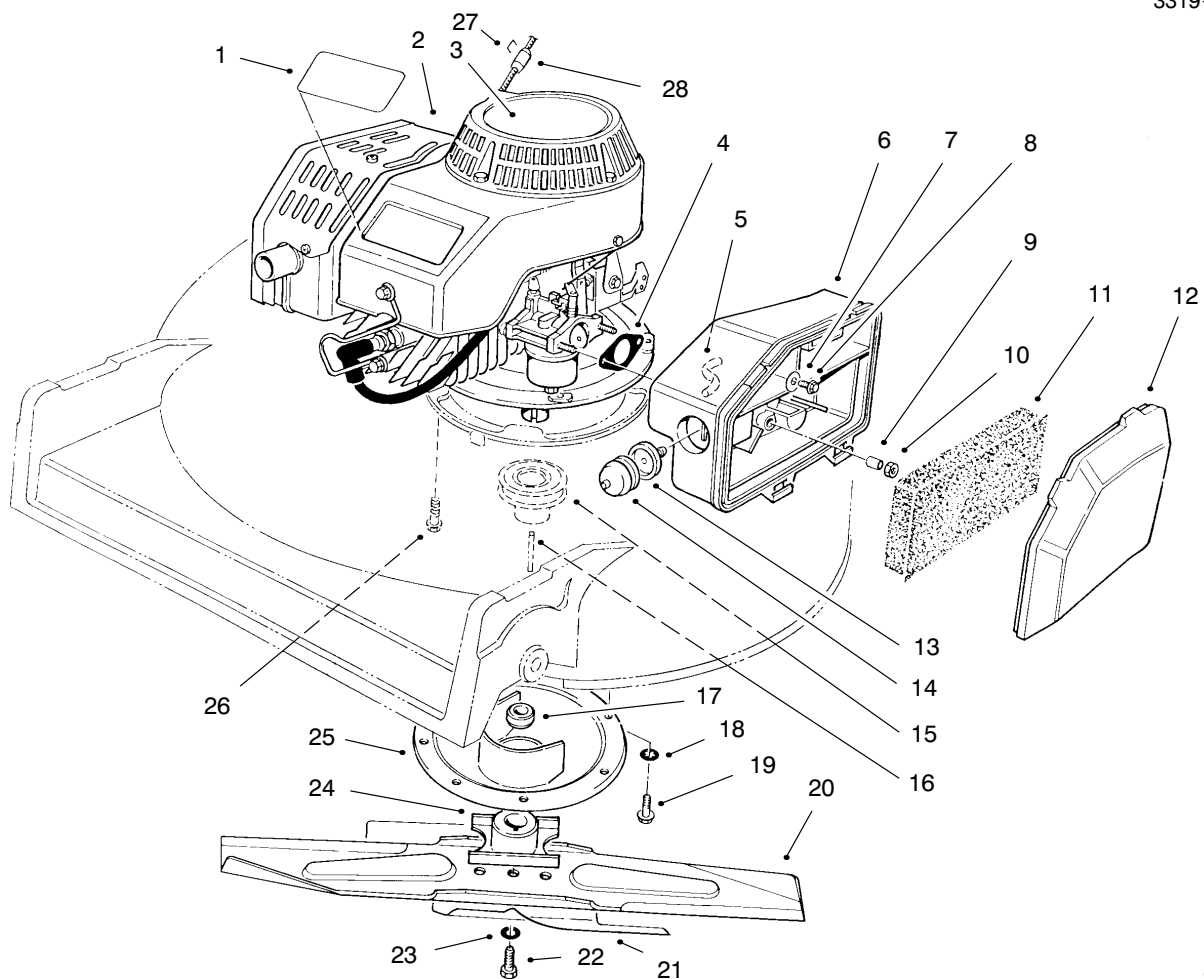


C-0660B

HOUSING ASSEMBLY (Continued)

| Ref. No. | Part No. | Description | No. Used | Ref. No. | Part No. | Description | No. Used |
|----------|----------|--------------------------|----------|----------|----------|--|----------|
| 30 | 74-1970 | Decal - Traction Drive | 1 | 45 | 323-12 | Screw - Hex Hd. Cap | 2 |
| 31 | 74-1741 | Bracket - Traction Adj. | 1 | 46 | 52-2480 | Spacer - Wheel | 2 |
| 32 | 32144-70 | Screw - Thread Forming | 1 | 47 | 321-2 | Screw - Hex Hd. Cap | 8 |
| 33 | 49-8740 | Quadrant - Rear L.H. | 1 | 48 | 257-3 | Washer - Pivot | 2 |
| * | 49-8750 | Quadrant - Rear R.H. | 1 | 49 | 32152-2 | Nut - Lock | 2 |
| 34 | 33-3208 | Rod - Shield | 1 | 50 | 40-1940 | Washer - Hardened | 4 |
| 35 | 44-0580 | Shield - Rear Safety | 1 | 51 | 3296-6 | Nut - Lock | 2 |
| 37 | 25-7740 | Knob - Arm | 2 | 52 | 49-8760 | Quadrant - Front L.H. | 1 |
| 38 | 66-7560 | Spring Arm Ass'y - Front | 2 | 53 | 92-7988 | Decal - Recycler | 1 |
| 39 | 27-6232 | Screw - Pivot | 2 | 54 | 92-1720 | Kicker | 1 |
| 40 | 53-7740 | Tire | 2 | 55 | 71-1280 | Decal - Safety Instructions | 1 |
| 41 | 52-2410 | Hub | 2 | * | 53-7720 | Wheel & Tire Assembly (Incl. Ref. #19, 40, 41, 44, & 47) | 2 |
| 42 | 52-2440 | Spacer - Bearing | 2 | | | | |
| 43 | 52-2450 | Bearing - Wheel | 4 | | | | |
| 44 | 53-7780 | Plate - Wheel Half | 4 | | | | |

*Not Illustrated

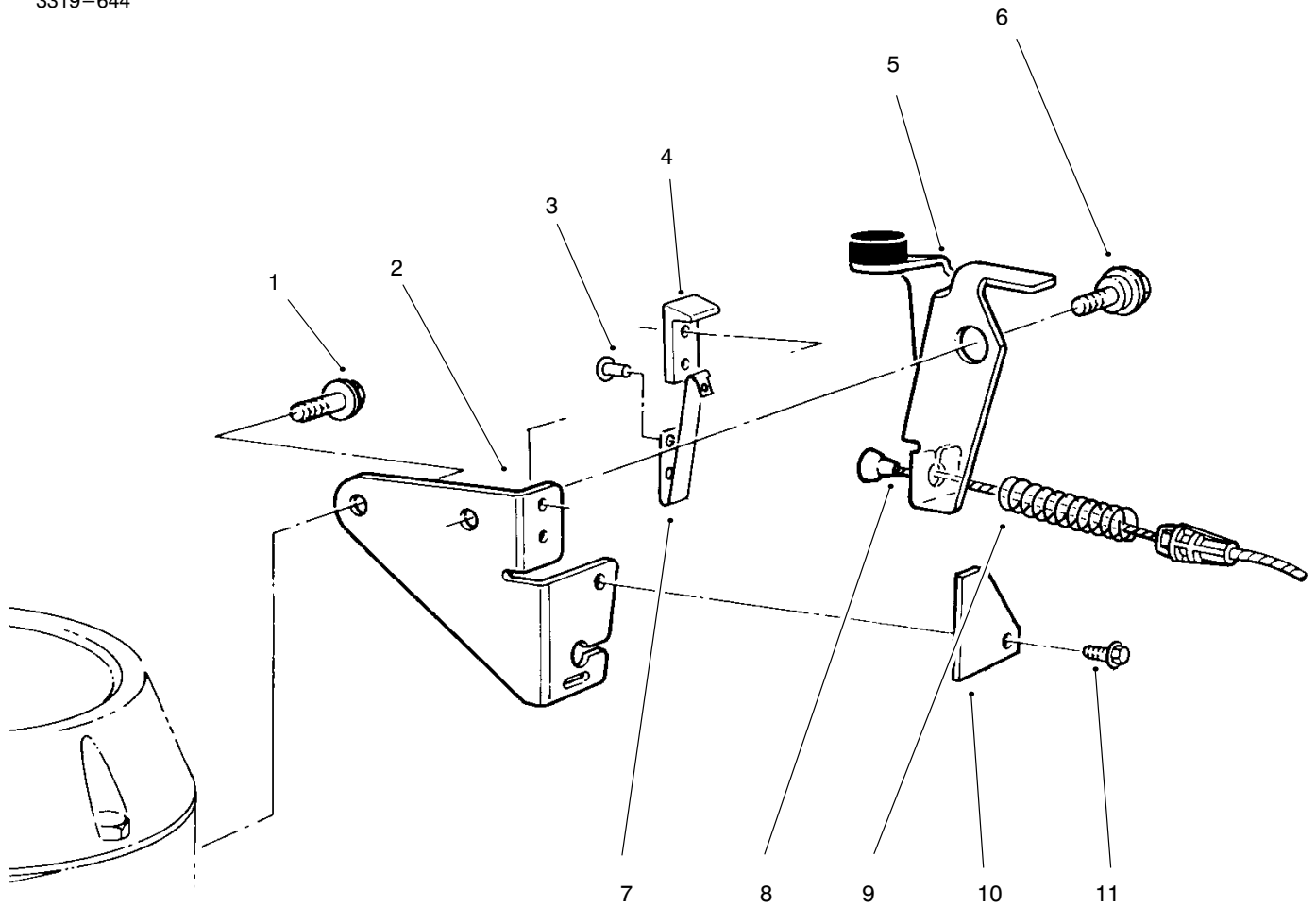


C-0661

ENGINE ASSEMBLY

| Ref. No. | Part No. | Description | No. Used | Ref. No. | Part No. | Description | No. Used |
|----------|----------|-------------------------|----------|----------|----------|--------------------------|----------|
| 1 | 71-1260 | Decal - Pro Line | 1 | 15 | 46-7910 | Pulley - Driver | 1 |
| 2 | 61-8062 | Engine - Complete | 1 | 16 | 27-6300 | Key - Square | 1 |
| 3 | 77-0040 | Decal - Recoil | 1 | 17 | 52-2190 | Spacer - Retainer, Blade | 1 |
| 4 | 81-0090 | Gasket | 1 | 18 | 3254-6 | Washer - Internal Tooth | 3 |
| 5 | 44-3172 | Hose - Primer | 1 | 19 | 32144-70 | Screw - Thread Forming | 3 |
| 6 | 63-9330 | Body - Air Cleaner | 1 | 20 | 14-9419 | Blade | 1 |
| 7 | 3256-16 | Washer | 1 | 21 | 92-1599 | Stiffener - Blade | 1 |
| 8 | 51-2690 | Screw - Hex. Flange Hd. | 1 | 22 | 26-0670 | Screw - Blade | 1 |
| 9 | 62-3980 | Sleeve | 2 | 23 | 3253-22 | Washer - Lock | 1 |
| 10 | 50-7180 | Nut - Lock | 2 | 24 | 52-2170 | Retainer - Blade | 1 |
| 11 | 63-9380 | Filter - Foam | 1 | 25 | 65-5860 | Protector - Crankshaft | 1 |
| 12 | 63-9340 | Cover - Air Cleaner | 1 | 26 | 66-9300 | Screw - Hex. Flange Hd. | 4 |
| 13 | 44-2750 | Body - Primer | 1 | †27 | | Staple | 1 |
| 14 | 66-7460 | Bulb - Primer | 1 | 28 | 47-2480 | Stop - Recoil | 1 |

†Obtain Locally



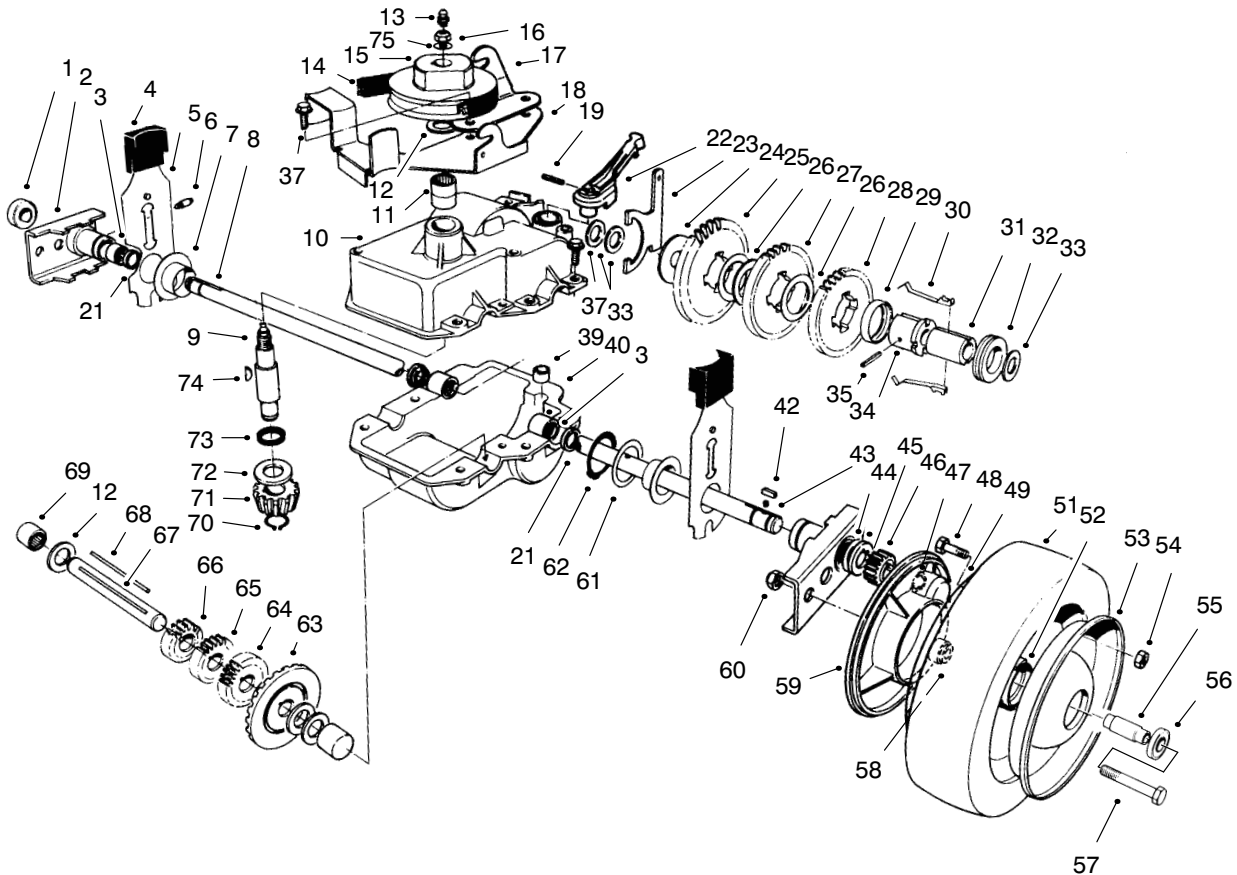
C-0531

BRAKE ASSEMBLY

| Ref. No. | Part No. | Description | No. Used |
|----------|----------|--------------------------|----------|
| 1 | 32144-10 | Screw - Self Tapping | 1 |
| 2 | 84-7820 | Plate - Mounting | 1 |
| 3 | 3290-459 | Rivet | 2 |
| 4 | 77-5260 | Strap - Insulation | 1 |
| 5 | 66-5380 | Brake Plate Assembly | 1 |
| 6 | 92-9698 | Screw - Shoulder, Metric | 1 |
| 7 | 60-9010 | Strap - Ground | 1 |

| Ref. No. | Part No. | Description | No. Used |
|----------|-----------|--|----------|
| 8 | 85-6904 | Cable - Brake | 1 |
| 9 | 66-5370 | Spring - Compression | 1 |
| 10 | 53-4690 | Stop - Ground Strap | 1 |
| 11 | 32144-112 | Screw - Self Tapping | 1 |
| * | 14-6009 | Mounting Plate Assembly (Incl. Ref. #2-4 & 7) | 1 |

*Not Illustrated

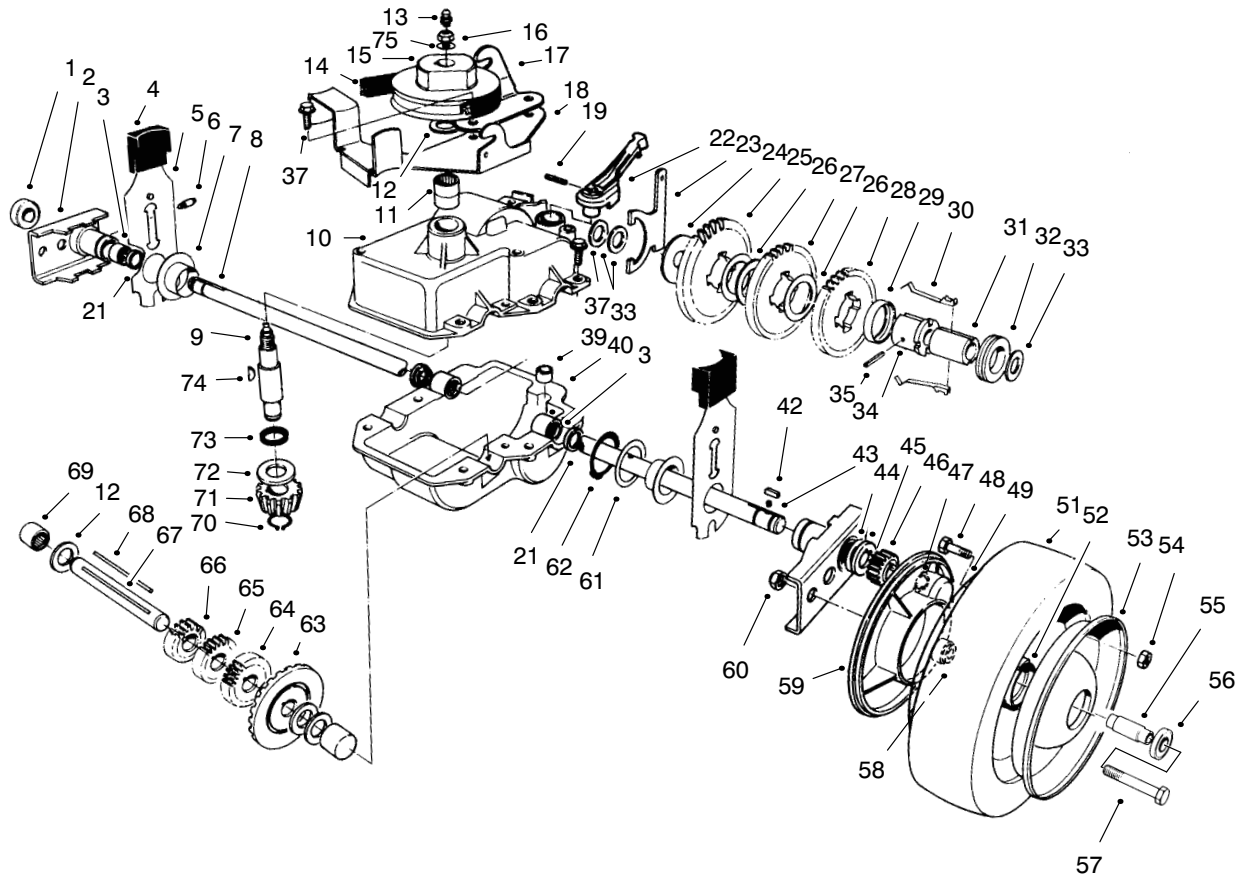


T-0678A

GEAR CASE ASSEMBLY

| Ref. No. | Part No. | Description | No. Used |
|----------|----------|--|----------|
| 1 | 52-2450 | Bearing | 2 |
| 2 | 74-1851 | Pivot Arm Assembly (Incl. Ref. #1, 3, 6 & 21) | 2 |
| 3 | 48-2060 | Bearing - Needle | 4 |
| 4 | 25-7740 | Knob - Arm | 2 |
| 5 | 66-7561 | Spring Arm Assy. - Rear | 2 |
| 6 | 92-6316 | Fitting - Grease | 2 |
| 7 | 48-2170 | Cap - End | 2 |
| 8 | 74-1890 | Shaft - Output | 1 |
| 9 | 13-5149 | Shaft - Input (Incl Ref. #13) | 1 |
| 10 | 13-9739 | Upper Case Assembly (Incl. Ref. #11 & 73) | 1 |
| 11 | 47-7270 | Bearing - Needle | 2 |
| 12 | 36-4792 | Washer - Thrust | 4 |
| 13 | 302-63 | Fitting - Grease | 1 |
| 14 | 36-8070 | V-Belt | 1 |
| 15 | 39-6740 | Pulley | 1 |
| 16 | 3296-5 | Nut - Lock | 1 |
| 17 | 74-1750 | Bracket - Traction, Engage | 1 |
| 18 | 49-8461 | Bracket - Guide, Belt | 1 |
| 19 | 32121-99 | Pin - Roll | 1 |
| 21 | 47-6730 | Seal | 4 |

| Ref. No. | Part No. | Description | No. Used |
|----------|----------|------------------------|----------|
| 22 | 74-1960 | Lever - Shift | 1 |
| 23 | 60-8870 | Yoke - Shift | 1 |
| 24 | 29-9690 | Washer - Flat | 1 |
| 25 | 46-3560 | Gear - 52T | 1 |
| 26 | 36-4770 | Spacer - Gear | 3 |
| 27 | 29-9271 | Gear - 42T | 1 |
| 28 | 42-4740 | Gear - 38T | 1 |
| 29 | 55-8020 | Retainer - Key | 1 |
| 30 | 29-9330 | Key - Shift | 2 |
| 31 | 39-6720 | Sleeve | 1 |
| 32 | 29-9340 | Collar - Shift | 1 |
| 33 | 36-4780 | Washer - Flat | 3 |
| 34 | 55-8010 | Sleeve - Gear | 1 |
| 35 | 3285-19 | Pin - Groove | 1 |
| 37 | 49-2040 | Screw - Self Tapping | 6 |
| 39 | 29-9570 | Bushing - Yoke | 1 |
| 40 | 74-1920 | Case - Lower | 1 |
| 42 | 612066 | Key | 2 |
| 43 | 39-9650 | Spring | 2 |
| 44 | 49-7700 | Washer - Thrust, Keyed | 2 |
| 45 | 62-3830 | Washer - Thrust, Keyed | 2 |
| 46 | 39-9160 | Pinion | 2 |
| 47 | 32151-68 | Ring - Klip | 4 |



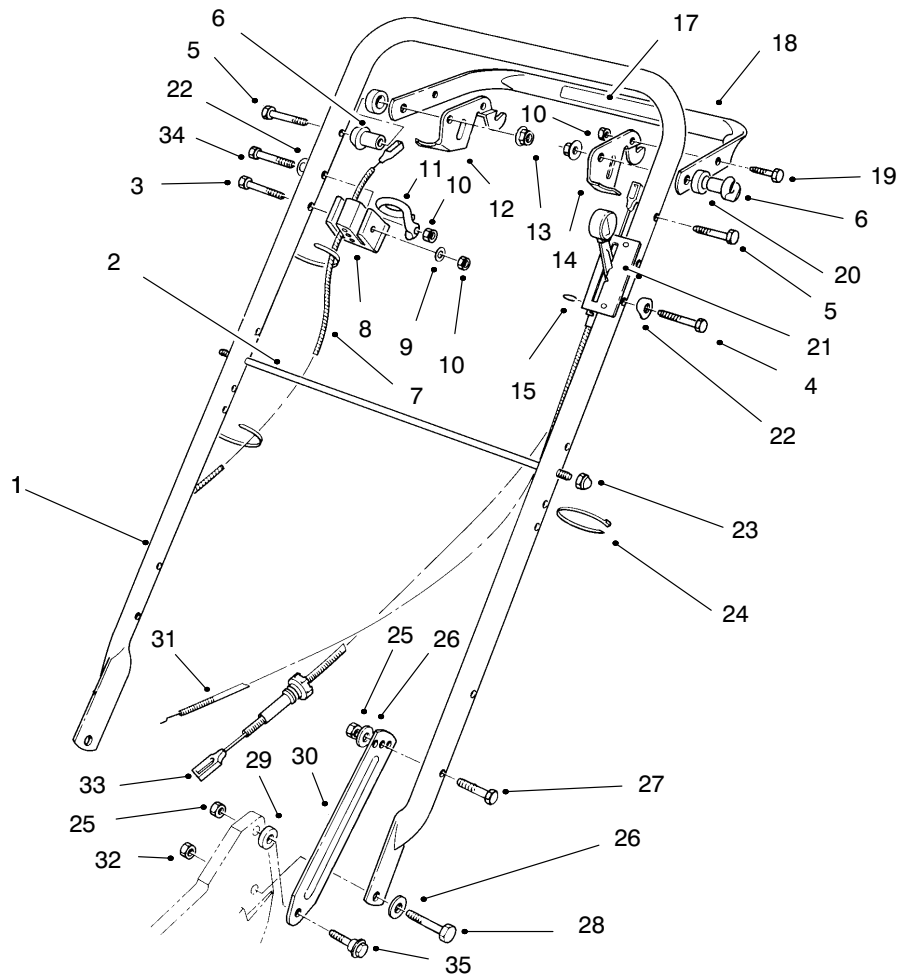
T-0678A

GEAR CASE ASSEMBLY(Continued)

| Ref. No. | Part No. | Description | No. Used |
|----------|----------|-----------------------|----------|
| 48 | 321-2 | Screw - Cap, Hex. Hd. | 8 |
| 49 | 92-4957 | Wheel - Half & Gear | 2 |
| 51 | 53-7740 | Tire | 2 |
| 52 | 52-2410 | Hub | 2 |
| 53 | 53-7780 | Plate - Wheel Half | 2 |
| 54 | 3296-42 | Nut - Lock | 8 |
| 55 | 52-2440 | Spacer - Bearing | 2 |
| 56 | 52-2450 | Bearing - Wheel | 4 |
| 57 | 323-13 | Screw - Cap, Hex. Hd. | 2 |
| 58 | 74-1650 | Spacer - Wheel | 2 |
| 59 | 74-1640 | Cover - Wheel | 2 |
| 60 | 32152-2 | Nut - Lock | 2 |
| 61 | 74-1810 | Washer | 2 |
| 62 | 32151-36 | Ring - Retaining | 2 |
| 63 | 74-1760 | Gear - Bevel | 1 |
| 64 | 39-6650 | Gear - 18T | 1 |

| Ref. No. | Part No. | Description | No. Used |
|----------|----------|--|----------|
| 65 | 46-3550 | Gear - 14T | 1 |
| 66 | 46-3540 | Gear - 12T | 1 |
| 67 | 53-7950 | Shaft - Intermediate | 1 |
| 68 | 39-7842 | Key - Square | 1 |
| 69 | 252-103 | Bearing - Closed | 2 |
| 70 | 32151-57 | Ring - Retaining | 1 |
| 71 | 39-6660 | Pinion - Bevel | 1 |
| 72 | 47-2910 | Washer - Thrust | 1 |
| 73 | 47-7260 | Seal | 1 |
| 74 | 3257-1 | Key - Woodruff | 2 |
| 75 | 3256-45 | Washer - Flat | 1 |
| * | 74-1861 | Gear Case Assembly (Incl. Ref. #3, 8-13, 15-16, 21, 23-40 & 63-74) | 1 |
| * | 74-1720 | Wheel & Tire Assembly (Incl. Ref. #48-49 & 51-56) | 2 |

*Not Illustrated

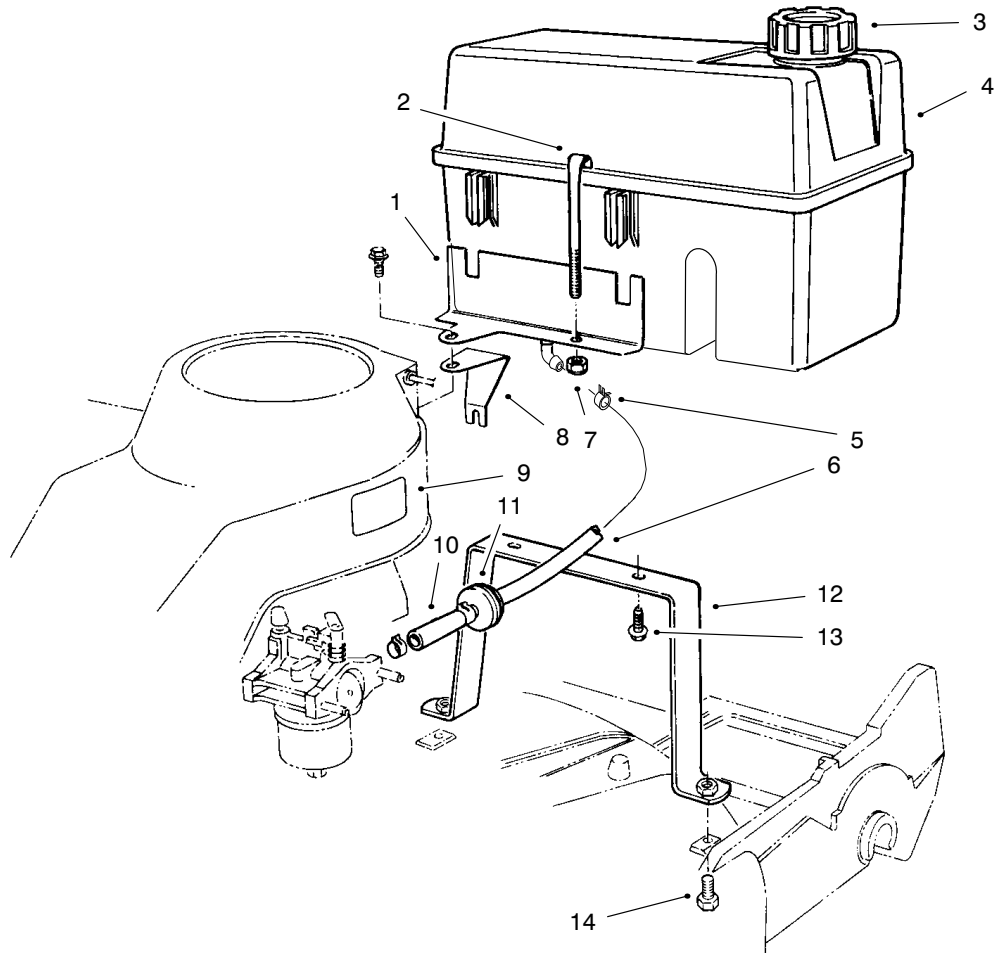


C-0662

HANDLE ASSEMBLY

| Ref. No. | Part No. | Description | No. Used | Ref. No. | Part No. | Description | No. Used |
|----------|----------|--------------------------|----------|----------|----------|----------------------------|----------|
| 1 | 98-2000 | Handle | 1 | 20 | 256-276 | Spacer | 2 |
| 2 | 48-2810 | Rod - Bag Support | 1 | 21 | 82-9950 | Bracket - Control Throttle | 1 |
| 3 | 321-15 | Screw - Hex Hd. Cap | 1 | 22 | 3-7501 | Washer - Curved | 4 |
| 4 | 321-13 | Screw - Hex Hd. Cap | 2 | 23 | 32111-7 | Nut - Acorn | 2 |
| 5 | 322-10 | Screw - Hex Hd. Cap | 2 | 24 | 3290-378 | Tie - Cable | 3 |
| 6 | 49-1630 | Support - Spacer | 2 | 25 | 3296-29 | Nut - Lock | 4 |
| 7 | 85-6904 | Cable - Brake | 1 | 26 | 3290-456 | Washer - Flat | 4 |
| 8 | 46-6980 | Support - Cable | 1 | 27 | 322-7 | Screw - Hex Hd. Cap | 2 |
| 9 | 3256-22 | Washer - Flat | 1 | 28 | 322-6 | Screw - Hex Hd. Cap | 2 |
| 10 | 3296-42 | Nut - Lock | 4 | 29 | 3-3287 | Spacer | 2 |
| 11 | 46-8081 | Guide - Rope | 1 | 30 | 84-8361 | Latch - Handle - L.H. | 1 |
| 12 | 77-5270 | Lever - Control | 1 | * | 84-8401 | Latch - Handle - R.H. | 1 |
| 13 | 3296-58 | Nut - Lock | 2 | 31 | 70-1061 | Cable - Throttle | 1 |
| 14 | 66-5350 | Lever - Control | 1 | 32 | 3296-47 | Nut - Lock | 2 |
| 15 | 32151-86 | E-Ring | 2 | 33 | 74-1791 | Cable - Traction | 1 |
| 17 | 82-2380 | Decal - Traction Control | 1 | 34 | 321-9 | Screw - Hex Hd. Cap | 1 |
| 18 | 61-8270 | Bar - Control | 1 | 35 | 27-7210 | Screw - Shoulder | 2 |
| 19 | 321-4 | Screw - Hex Hd. Cap | 2 | | | | |

*Not Illustrated

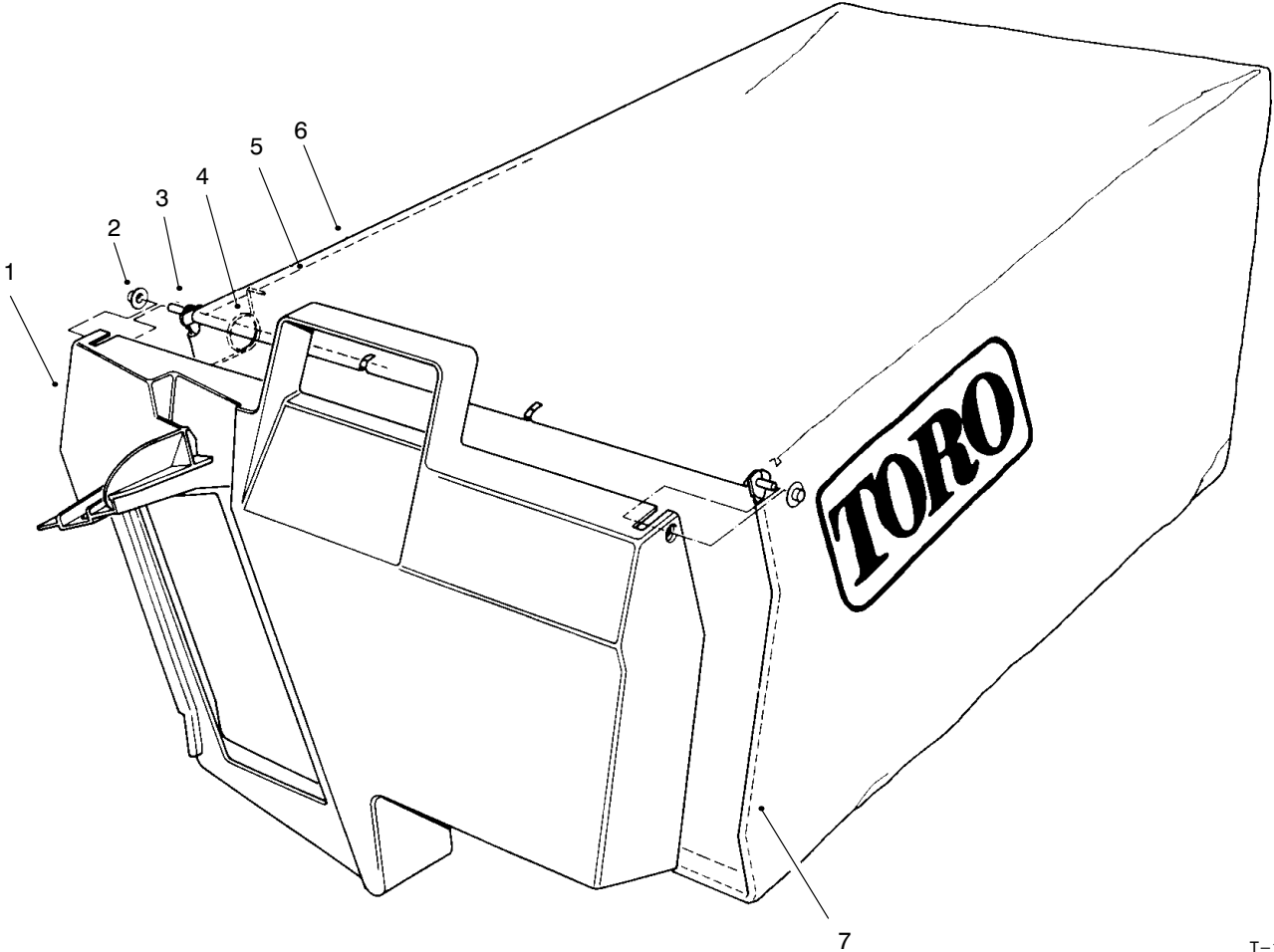


C-1019A

GAS TANK ASSEMBLY

| Ref. No. | Part No. | Description | No. Used |
|----------|----------|-----------------------|----------|
| 1 | 74-2110 | Bracket - Tank | 1 |
| 2 | 77-2840 | Retainer - Tank, Fuel | 1 |
| 3 | 55-3575 | Cap - Gas | 1 |
| 4 | 94-5827 | Tank - Gas | 1 |
| 5 | 2412-95 | Clamp - Fuel Line | 4 |
| 6 | 68-3633 | Hose - Fuel | 1 |
| 7 | 3296-42 | Nut - Lock | 1 |

| Ref. No. | Part No. | Description | No. Used |
|----------|----------|-------------------------|----------|
| 8 | 77-0520 | Support - Bracket | 1 |
| 9 | 62-7600 | Decal - Fuel | 1 |
| 10 | 51-3211 | Hose - Fuel | 1 |
| 11 | 71-9280 | Filter - Fuel | 1 |
| 12 | 84-9160 | Mount - Tank, Bottom | 1 |
| 13 | 46-8091 | Screw - Hex. Washer Hd. | 2 |
| 14 | 323-6 | Screw - Cap, Hex. Hd. | 2 |

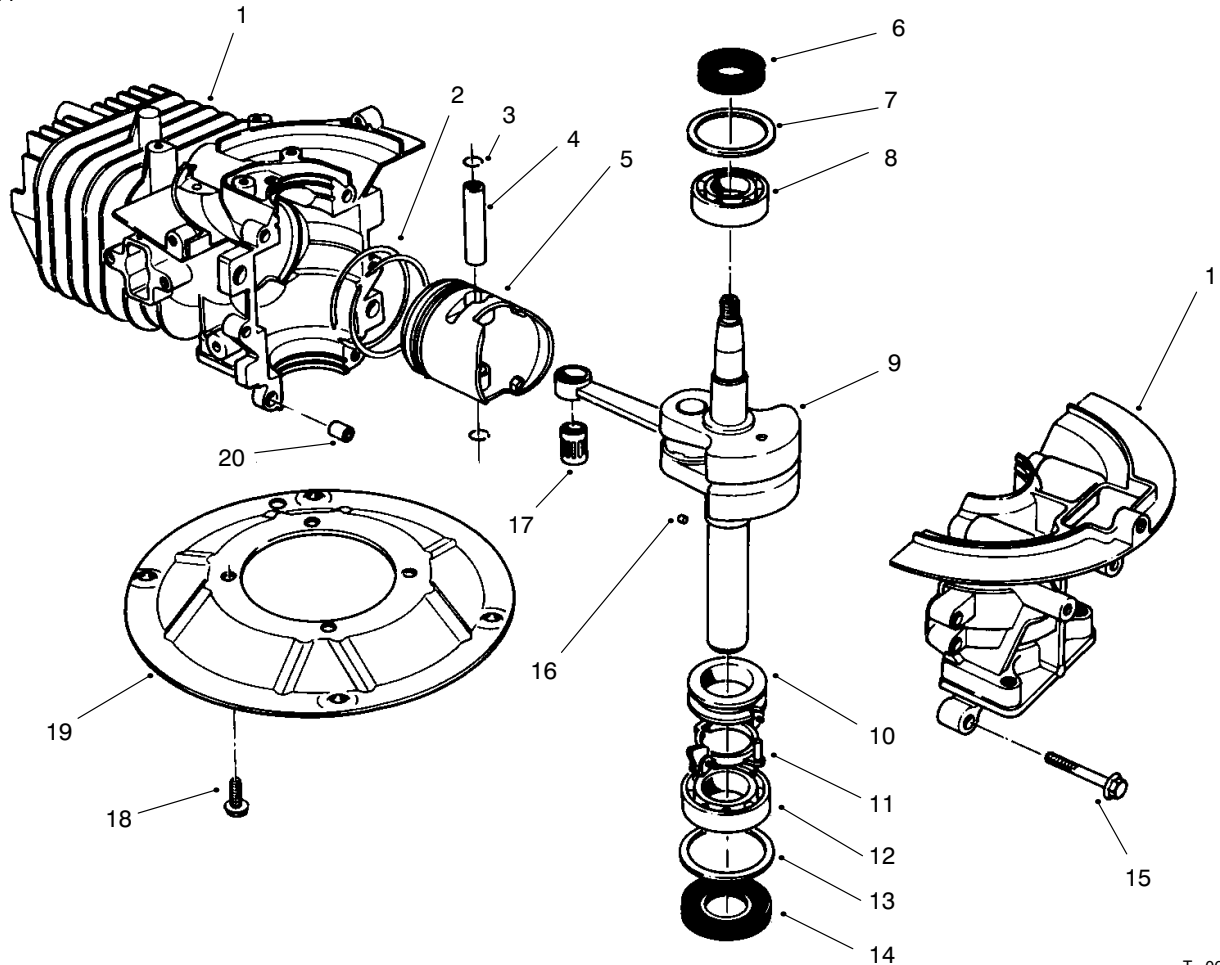


T-1100

GRASS BAG ASSEMBLY No. 98-9220

| Ref. No. | Part No. | Description | No. Used |
|----------|----------|-------------------|----------|
| 1 | 48-2840 | Door - Bag, Grass | 1 |
| 2 | 3290-422 | Nut - Push | 2 |
| 3 | 33-4820 | Hinge - Door, Bag | 1 |
| 4 | 36-6910 | Spring | 2 |

| Ref. No. | Part No. | Description | No. Used |
|----------|----------|--------------------|----------|
| 5 | 42-4030 | Frame - Bag, Upper | 1 |
| 6 | 98-9222 | Bag - Grass | 1 |
| 7 | 42-4020 | Frame - Bag | 1 |



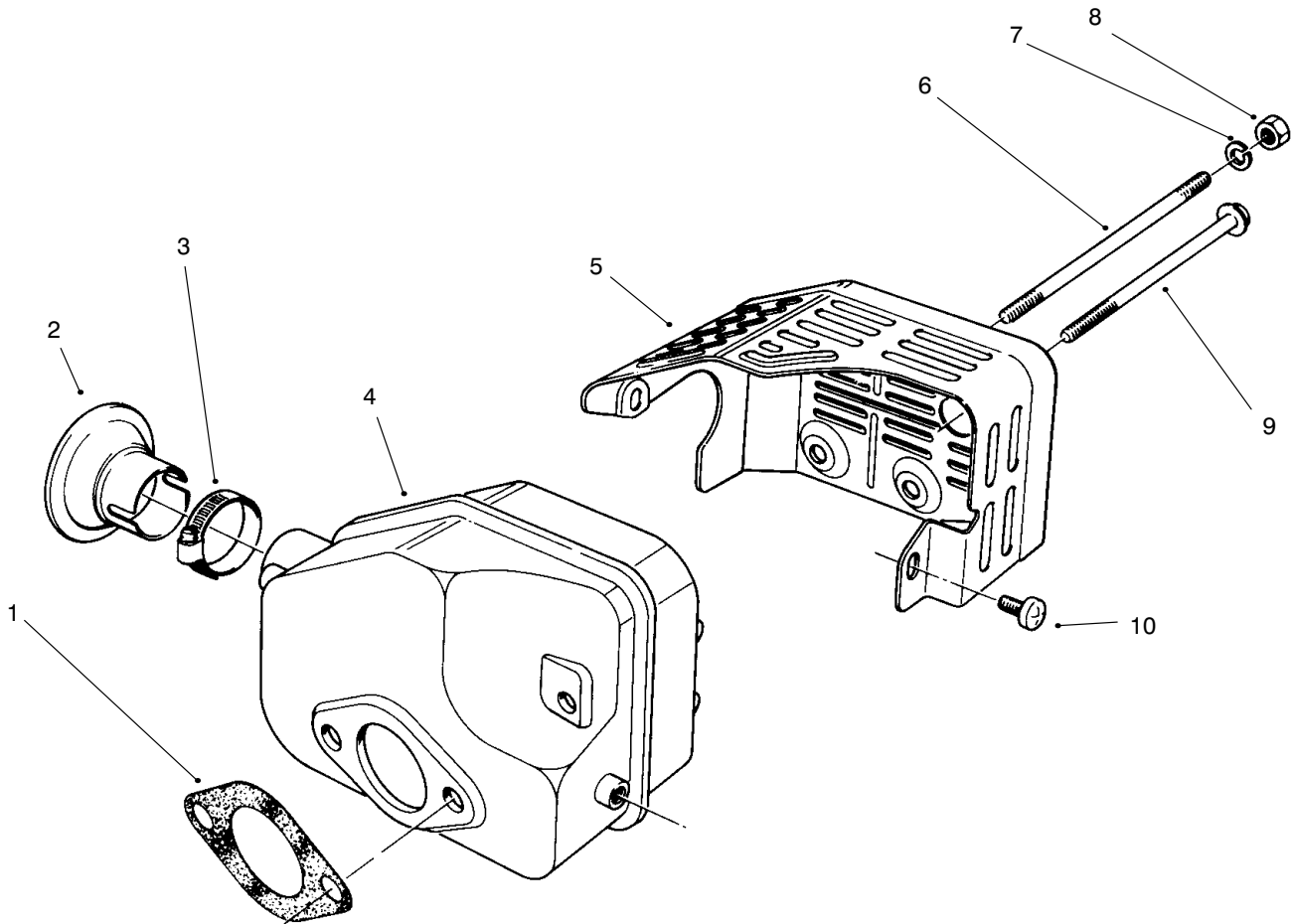
T-0663

CRANKSHAFT ASSEMBLY (Model No. 47PT7-3)

| Ref. No. | Part No. | Description | No. Used |
|----------|----------|------------------------------------|----------|
| 1 | 94-1685 | Crankcase/Cylinder Assy. | 1 |
| 2 | 81-0590 | Piston Ring Set | 1 |
| 3 | 81-0620 | Circlip | 2 |
| 4 | 81-0600 | Pin - Wrist | 1 |
| 5 | 81-2140 | Piston - 58mm | 1 |
| 6 | 81-0720 | Seal - Oil, Upper | 1 |
| 7 | 81-0710 | Washer - Thrust, Upper | 1 |
| 8 | 81-0690 | Bearing - Upper 20mm | 1 |
| 9 | 81-4680 | Crankshaft/Connecting Rod Assembly | 1 |
| 10 | 81-0770 | Spacer - Governor | 1 |

| Ref. No. | Part No. | Description | No. Used |
|----------|----------|-------------------------|----------|
| 11 | 81-0750 | Bracket - Arm, Governor | 1 |
| 12 | 81-0700 | Bearing - Lower 25mm | 1 |
| 13 | 81-0730 | Washer - Thrust, Lower | 1 |
| 14 | 81-0740 | Seal - Oil, Lower | 1 |
| 15 | 81-0540 | Bolt 30mm Lg. | 5 |
| 16 | 81-0760 | Pin - Crankshaft | 1 |
| 17 | 81-0610 | Bearing - Wrist Pin | 1 |
| 18 | 81-0570 | Bolt | 4 |
| 19 | 81-0560 | Plate - Mounting | 1 |
| 20 | 81-0520 | Pin - Crankcase | 2 |
| * | 98-2041 | Short Block | 1 |

*Not Illustrated



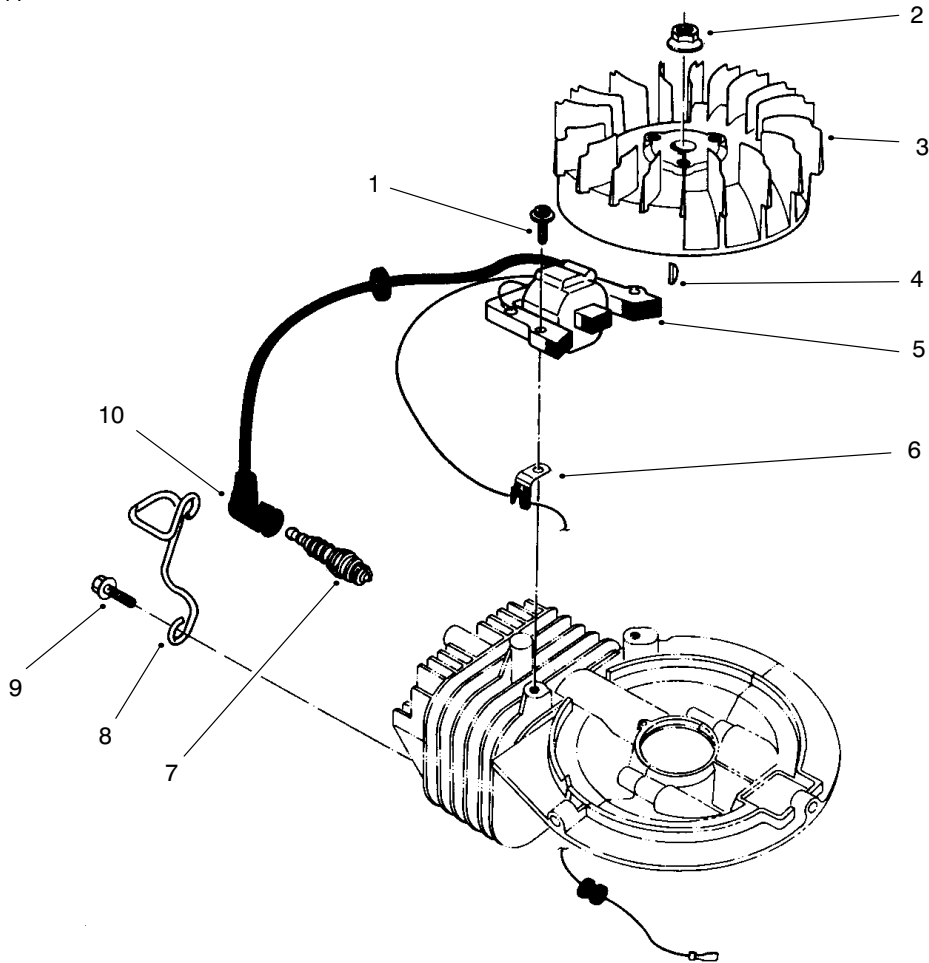
T-0667

MUFFLER ASSEMBLY (Model No. 47PT7-3)

| Ref. No. | Part No. | Description | No. Used |
|----------|----------|---------------------------|----------|
| 1 | 81-1080 | Gasket - Muffler | 1 |
| 2 | 81-0200 | Spark Arrester (Optional) | 1 |
| †3 | | Clamp | 1 |
| 4 | 81-5690 | Muffler | 1 |
| 5 | 81-2450 | Cover - Muffler | 1 |

| Ref. No. | Part No. | Description | No. Used |
|----------|----------|----------------------|----------|
| 6 | 81-1100 | Bolt | 2 |
| 7 | 81-1120 | Washer - Lock | 2 |
| 8 | 81-1110 | Nut | 2 |
| 9 | 81-1150 | Bolt - Self Tapping | 1 |
| 10 | 81-1140 | Screw - Phillips Hd. | 2 |

†Obtain Locally



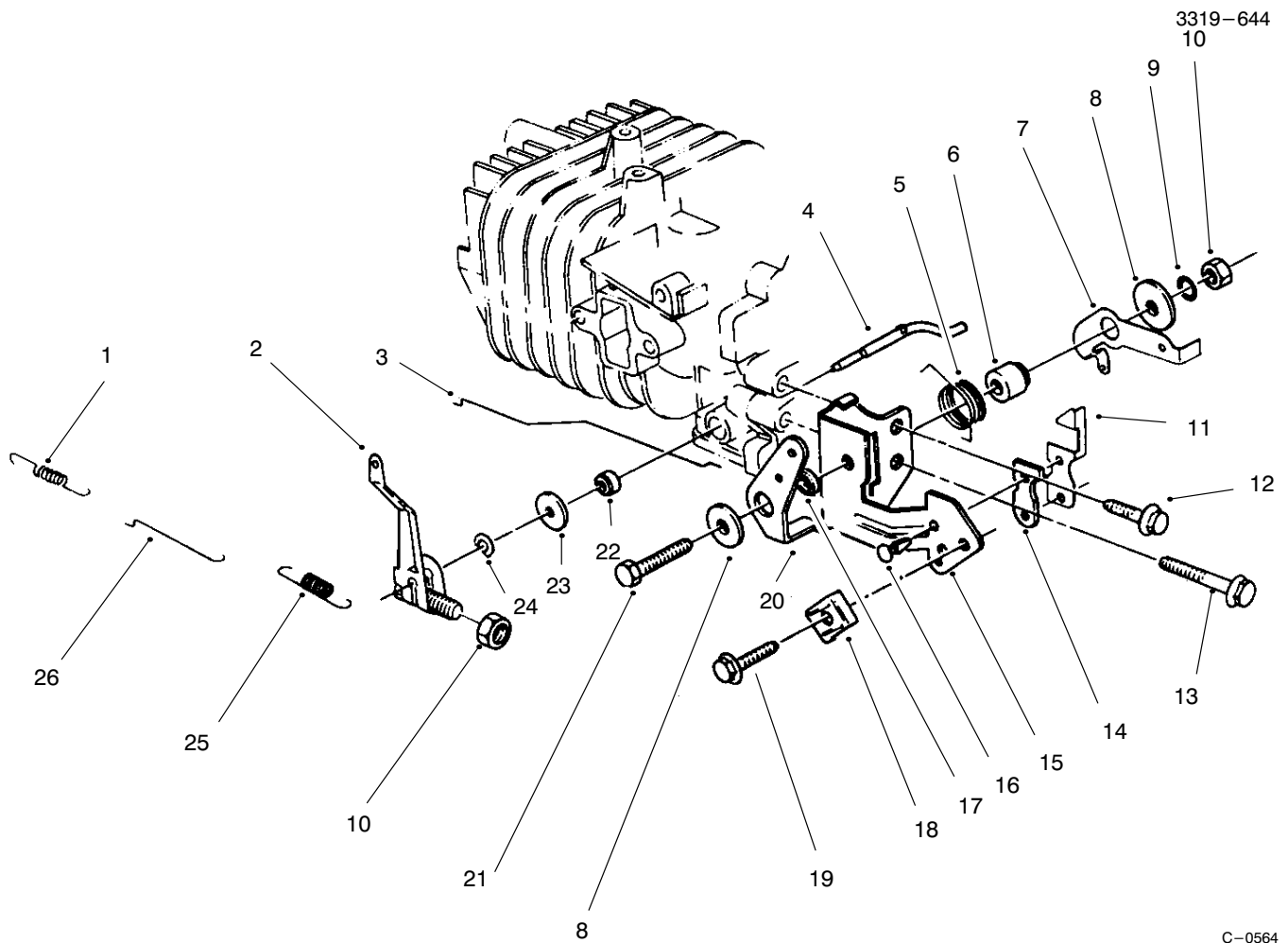
T-0664

IGNITION ASSEMBLY (Model No. 47PT7-3)

| Ref. No. | Part No. | Description | No. Used |
|----------|----------|------------------------|----------|
| 1 | 81-5680 | Screw - Cap, Hex Hd. | 2 |
| 2 | 81-1330 | Nut | 1 |
| 3 | 81-2810 | Flywheel - Magneto | 1 |
| 4 | 81-2370 | Key - Flywheel | 1 |
| 5 | 81-2820 | Coil/Ignition Assembly | 1 |
| 6 | 81-1480 | Clamp | 1 |

| Ref. No. | Part No. | Description | No. Used |
|----------|----------|-----------------------------------|----------|
| 7 | 81-0181 | Spark Plug | 1 |
| 8 | 81-2120 | Guard - Spark Plug | 1 |
| 9 | 81-2350 | Bolt - Self Tapping (20mm Lg.) | 2 |
| 10 | 81-1500 | Cap Assembly - Spark Plug | 1 |
| * | 41-7650 | Puller - Flywheel | 1 |

*Not Illustrated

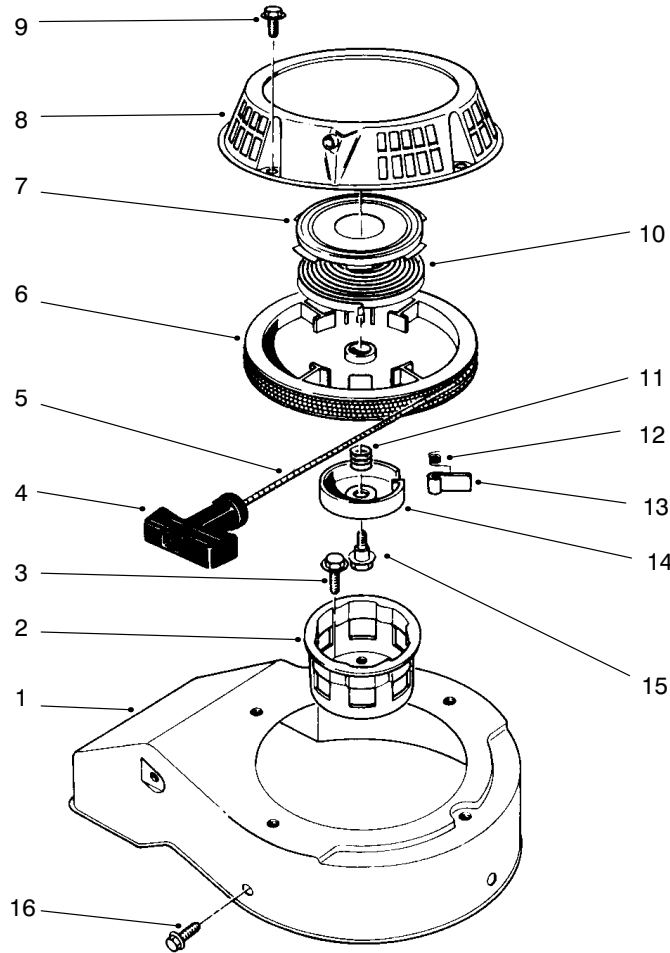


C-0564

GOVERNOR ASSEMBLY (Model No. 47PT7-3)

| Ref. No. | Part No. | Description | No. Used |
|----------|----------|--------------------------|----------|
| 1 | 81-0920 | Spring - Carburetor Rod | 1 |
| 2 | 81-5420 | Governor Arm/Bolt Assy. | 1 |
| 3 | 81-5410 | Rod - Choke | 1 |
| 4 | 81-2880 | Shaft - Governor | 1 |
| 5 | 81-2460 | Spring - Lever, Choke | 1 |
| 6 | 81-1770 | Spacer - Lever, Governor | 1 |
| 7 | 81-2850 | Lever - Governor | 1 |
| 8 | 81-1750 | Washer - Lever, Choke | 2 |
| 9 | 81-1450 | Washer - Lock | 1 |
| 10 | 81-0900 | Nut | 2 |
| 11 | 81-1840 | Terminal - Kill Switch | 1 |
| 12 | 81-1170 | Bolt - Self Tapping | 1 |
| 13 | 81-0540 | Bolt | 1 |

| Ref. No. | Part No. | Description | No. Used |
|----------|----------|--------------------------|----------|
| 14 | 81-1830 | Insulator - Kill Switch | 1 |
| 15 | 81-2420 | Bracket - Throttle | 1 |
| 16 | 81-4530 | Rivet - Kill Switch | 2 |
| 17 | 81-2470 | Spacer - Lever, Choke | 1 |
| 18 | 81-2430 | Clamp - Cable | 1 |
| 19 | 50-0130 | Bolt - Clamp, Cable | 1 |
| 20 | 81-1710 | Lever - Choke | 1 |
| 21 | 81-1730 | Bolt - Bracket, Throttle | 1 |
| 22 | 81-0850 | Seal - Shaft, Governor | 1 |
| 23 | 81-0860 | Washer | 1 |
| 24 | 81-0870 | Ring - Retaining | 1 |
| 25 | 81-2830 | Spring - Governor | 1 |
| 26 | 81-0910 | Rod - Carburetor | 1 |



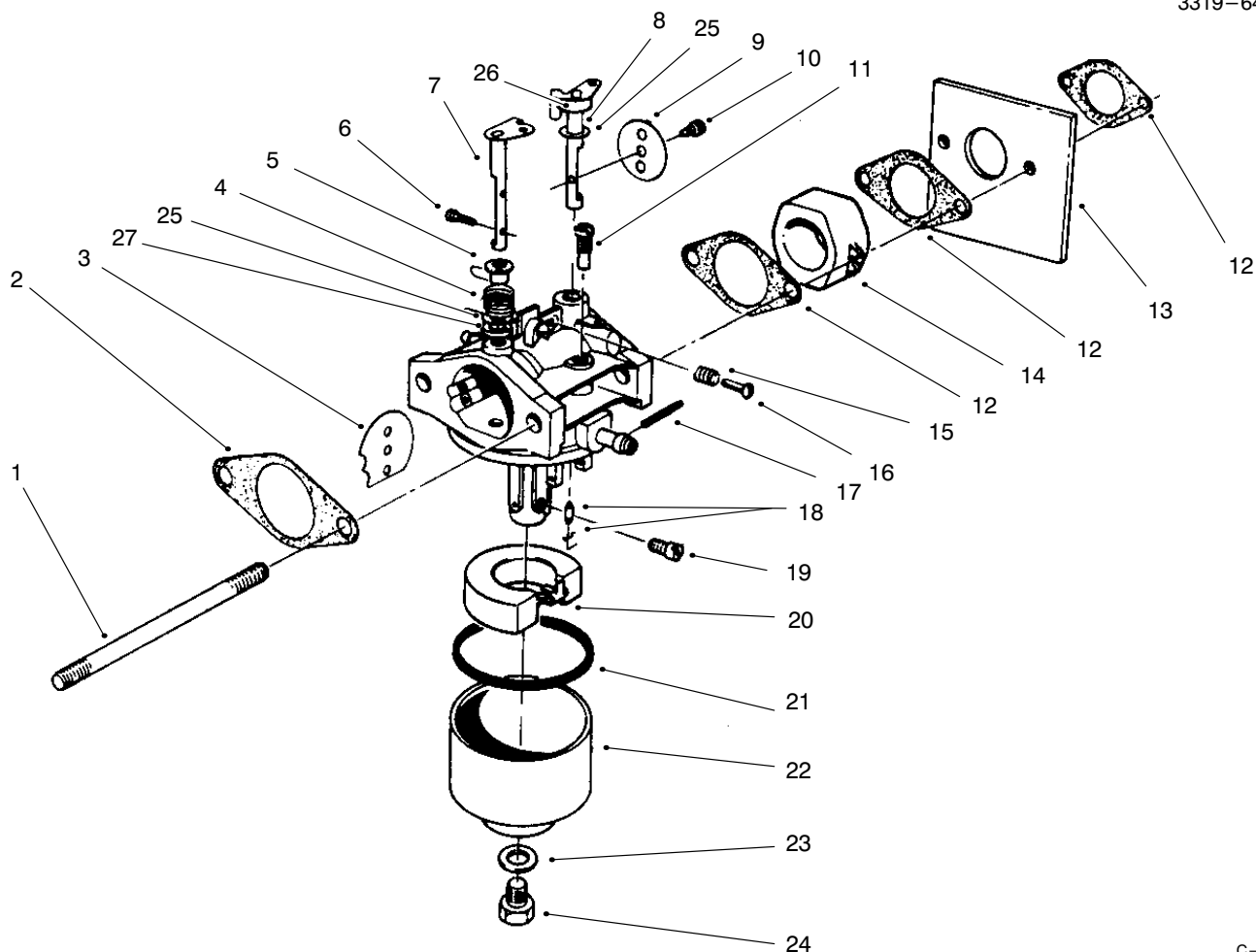
T-1102

RECOIL ASSEMBLY (Model No. 47PT7-3)

| Ref. No. | Part No. | Description | No. Used |
|----------|----------|---------------------------|----------|
| 1 | 81-2080 | Cover - Fan, Cooling | 1 |
| 2 | 81-2170 | Cup - Pulley, Starter | 1 |
| 3 | 81-1300 | Bolt | 3 |
| 4 | 81-1630 | Handle - Recoil | 1 |
| 5 | 81-1270 | Rope | 1 |
| 6 | 81-1210 | Pulley - Rope | 1 |
| 7 | | Retainer - Spring, Recoil | 1 |
| 8 | 81-2100 | Case - Starter | 1 |
| 9 | 81-1280 | Bolt | 4 |
| 10 | | Spring - Recoil | 1 |
| 11 | 81-1240 | Spring - Compression | 1 |

| Ref. No. | Part No. | Description | No. Used |
|----------|----------|--|----------|
| 12 | 81-1220 | Spring - Dog | 1 |
| 13 | 81-1230 | Dog - Starter | 1 |
| 14 | 81-1250 | Retainer - Dog | 1 |
| 15 | 81-1260 | Bolt - Shoulder | 1 |
| 16 | 53-1340 | Bolt - Self Tapping (15mm Lg.) | 3 |
| * | 81-5940 | Starter Assembly (Incl. Ref. #4-15) | 1 |
| * | 81-2300 | Spring & Retainer Assembly (Incl. Ref. #7 & 10) | 1 |

*Not Illustrated



CARBURETOR ASSEMBLY (Model No. 47PT7-3)

C-0563

| Ref. No. | Part No. | Description | No. Used |
|----------|----------|------------------------|----------|
| 1 | 81-5450 | Stud Bolt, Carburetor | 2 |
| 2 | 81-0090 | Gasket | 1 |
| 3 | 81-0240 | Valve - Choke | 1 |
| 4 | 81-0230 | Spring - Choke | 1 |
| 5 | 81-0220 | Bushing - Choke | 1 |
| 6 | 81-2160 | Screw - Choke Plate | 2 |
| 7 | 81-1950 | Shaft - Choke | 1 |
| 8 | 81-0250 | Shaft - Throttle | 1 |
| 9 | 81-0260 | Valve - Throttle | 1 |
| 10 | 81-0270 | Screw - Throttle | 1 |
| 11 | 94-1684 | Jet - Pilot #42.5 | 1 |
| 12 | 81-0780 | Gasket - Carburetor | 3 |
| 13 | 81-5490 | Shield - Carburetor | 1 |
| 14 | 81-5440 | Insulator - Carburetor | 1 |
| 15 | 81-2580 | Spring - Idle Stop | 1 |
| 16 | 50-0250 | Screw - Idle Stop | 1 |
| 17 | 81-2600 | Pin - Float | 1 |
| 18 | 81-4910 | Needle Valve | 1 |
| 19 | 81-1060 | Jet - Main #75 | 1 |

| Ref. No. | Part No. | Description | No. Used |
|----------|----------|---|----------|
| * | 81-2340 | Jet - Main #72.5 High Alt. Above 6,000 Ft. (Optional) | A/R |
| 20 | 81-0970 | Float | 1 |
| 21 | 81-1010 | Gasket - Bowl, Float | 1 |
| 22 | 81-5660 | Bowl - Float | 1 |
| 23 | 81-1020 | Gasket - Capscrew, Bowl | 1 |
| 24 | 81-5670 | Capscrew - Bowl | 1 |
| 25 | 81-2530 | Seal | 2 |
| 26 | 81-2540 | Ring | 1 |
| 27 | 81-2550 | Packing | 1 |
| * | 94-1687 | Carburetor Ass'y w/Primer | 1 |
| * | 81-2520 | Carburetor Ass'y | 1 |
| * | 12-6379 | Carburetor Kit (Incl. Ref. #2, 12, 18, 21 & 23) | 1 |
| * | 81-5810 | Seat Kit (Incl. Valve Seat & Ref. #18) | 1 |

*Not Illustrated

TORO PART NUMBER INDEX

| Part No. | Description | Pg. No. | Ref. No. | Qty. | Part No. | Description | Pg. No. | Ref. No. | Qty. |
|----------|-------------------------|---------|----------|------|----------|-----------------------------|---------|----------|------|
| 612066 | Key | 5 | 42 | 2 | 49-2040 | Screw - Self Tapping | 5 | 37 | 6 |
| 3-3287 | Spacer | 7 | 29 | 2 | 49-2040 | Screw - Thread Forming | 1 | 3 | 8 |
| 3-7501 | Washer - Curved | 7 | 22 | 4 | 49-7700 | Washer - Thrust, Keyed | 5 | 44 | 2 |
| 12-6379 | Carburetor Kit | 15 | * | 1 | 49-8461 | Bracket - Guide, Belt | 5 | 18 | 1 |
| 13-5149 | Shaft - Input | 5 | 9 | 1 | 49-8740 | Quadrant - Rear L.H. | 2 | 33 | 1 |
| 13-9739 | Upper Case Assembly | 5 | 10 | 1 | 49-8750 | Quadrant - Rear R.H. | 2 | * | 1 |
| 14-6009 | Mounting Plate Assembly | 4 | * | 1 | 49-8760 | Quadrant - Front L.H. | 2 | 52 | 1 |
| 14-9419 | Blade | 3 | 20 | 1 | 49-8770 | Quadrant - Front R.H. | 1 | 2 | 1 |
| 25-7740 | Knob - Arm | 5 | 4 | 2 | 50-0130 | Bolt - Clamp, Cable | 13 | 19 | 1 |
| 25-7740 | Knob - Arm | 2 | 37 | 2 | 50-0250 | Screw - Idle Stop | 15 | 16 | 1 |
| 26-0670 | Screw - Blade | 3 | 22 | 1 | 50-7180 | Nut - Lock | 3 | 10 | 2 |
| 27-6232 | Screw - Pivot | 2 | 39 | 2 | 51-2690 | Screw - Hex. Flange Hd. | 3 | 8 | 1 |
| 27-6300 | Key - Square | 3 | 16 | 1 | 51-3211 | Hose - Fuel | 8 | 10 | 1 |
| 27-7210 | Screw - Shoulder | 7 | 35 | 2 | 52-2170 | Retainer - Blade | 3 | 24 | 1 |
| 29-9271 | Gear - 42T | 5 | 27 | 1 | 52-2190 | Spacer - Retainer, Blade | 3 | 17 | 1 |
| 29-9330 | Key - Shift | 5 | 30 | 2 | 52-2410 | Hub | 2 | 41 | 2 |
| 29-9340 | Collar - Shift | 5 | 32 | 1 | 52-2410 | Hub | 6 | 52 | 2 |
| 29-9570 | Bushing - Yoke | 5 | 39 | 1 | 52-2440 | Spacer - Bearing | 2 | 42 | 2 |
| 29-9690 | Washer - Flat | 5 | 24 | 1 | 52-2440 | Spacer - Bearing | 6 | 55 | 2 |
| 33-3208 | Rod - Shield | 2 | 34 | 1 | 52-2450 | Bearing | 5 | 1 | 2 |
| 33-4820 | Hinge - Door, Bag | 9 | 3 | 1 | 52-2450 | Bearing - Wheel | 2 | 43 | 4 |
| 36-4770 | Spacer - Gear | 5 | 26 | 3 | 52-2450 | Bearing - Wheel | 6 | 56 | 4 |
| 36-4780 | Washer - Flat | 5 | 33 | 3 | 52-2480 | Spacer - Wheel | 2 | 46 | 2 |
| 36-4792 | Washer - Thrust | 5 | 12 | 4 | 52-2620 | Label - Grease | 1 | 28 | 1 |
| 36-6910 | Spring | 9 | 4 | 2 | 53-1340 | Bolt - Self Tapping | 14 | 16 | 3 |
| 36-8070 | V-Belt | 5 | 14 | 1 | 53-4690 | Stop - Ground Strap | 4 | 10 | 1 |
| 37-7260 | Screw - Special | 1 | 26 | 2 | 53-7720 | Wheel & Tire Assembly | 2 | * | 2 |
| 39-5770 | Decal - Danger | 1 | 7 | 1 | 53-7740 | Tire | 2 | 40 | 2 |
| 39-6650 | Gear - 18T | 6 | 64 | 1 | 53-7740 | Tire | 6 | 51 | 2 |
| 39-6660 | Pinion - Bevel | 6 | 71 | 1 | 53-7780 | Plate - Wheel Half | 2 | 44 | 4 |
| 39-6720 | Sleeve | 5 | 31 | 1 | 53-7780 | Plate - Wheel Half | 6 | 53 | 2 |
| 39-6740 | Pulley | 5 | 15 | 1 | 53-7950 | Shaft - Intermediate | 6 | 67 | 1 |
| 39-7842 | Key - Square | 6 | 68 | 1 | 55-3575 | Cap - Gas | 8 | 3 | 1 |
| 39-9160 | Pinion | 5 | 46 | 2 | 55-8010 | Sleeve - Gear | 5 | 34 | 1 |
| 39-9650 | Spring | 5 | 43 | 2 | 55-8020 | Retainer - Key | 5 | 29 | 1 |
| 40-1940 | Washer - Hardened | 2 | 50 | 4 | 60-8870 | Yoke - Shift | 5 | 23 | 1 |
| 41-7650 | Puller - Flywheel | 12 | * | 1 | 60-9010 | Strap - Ground | 4 | 7 | 1 |
| 42-4020 | Frame - Bag | 9 | 7 | 1 | 61-8062 | Engine - Complete | 3 | 2 | 1 |
| 42-4030 | Frame - Bag, Upper | 9 | 5 | 1 | 61-8270 | Bar - Control | 7 | 18 | 1 |
| 42-4740 | Gear - 38T | 5 | 28 | 1 | 61-8300 | Pivot Arm Assembly | 1 | 1 | 2 |
| 44-0580 | Shield - Rear Safety | 2 | 35 | 1 | 62-3830 | Washer - Thrust, Keyed | 5 | 45 | 2 |
| 44-2750 | Body - Primer | 3 | 13 | 1 | 62-3980 | Sleeve | 3 | 9 | 2 |
| 44-3172 | Hose - Primer | 3 | 5 | 1 | 62-7600 | Decal - Fuel | 8 | 9 | 1 |
| 46-3540 | Gear - 12T | 6 | 66 | 1 | 63-9330 | Body - Air Cleaner | 3 | 6 | 1 |
| 46-3550 | Gear - 14T | 6 | 65 | 1 | 63-9340 | Cover - Air Cleaner | 3 | 12 | 1 |
| 46-3560 | Gear - 52T | 5 | 25 | 1 | 63-9380 | Filter - Foam | 3 | 11 | 1 |
| 46-6810 | Screw - Thread Forming | 1 | 8 | 1 | 65-5860 | Protector - Crankshaft | 3 | 25 | 1 |
| 46-6811 | Screw - Thread Forming | 1 | 12 | 1 | 66-5350 | Lever - Control | 7 | 14 | 1 |
| 46-6980 | Support - Cable | 7 | 8 | 1 | 66-5370 | Spring - Compression | 4 | 9 | 1 |
| 46-7030 | Retainer - Cable | 1 | 29 | 1 | 66-5380 | Brake Plate Assembly | 4 | 5 | 1 |
| 46-7910 | Pulley - Driver | 3 | 15 | 1 | 66-7460 | Bulb - Primer | 3 | 14 | 1 |
| 46-8081 | Guide - Rope | 7 | 11 | 1 | 66-7560 | Spring Arm Ass'y - Front | 2 | 38 | 2 |
| 46-8090 | Screw - Self Tapping | 1 | 17 | 2 | 66-7561 | Spring Arm Assy. - Rear | 5 | 5 | 2 |
| 46-8091 | Screw - Hex. Washer Hd. | 8 | 13 | 2 | 66-9300 | Screw - Hex. Flange Hd. | 3 | 26 | 4 |
| 47-2480 | Stop - Recoil | 3 | 28 | 1 | 68-3633 | Hose - Fuel | 8 | 6 | 1 |
| 47-2910 | Washer - Thrust | 6 | 72 | 1 | 70-1061 | Cable - Throttle | 7 | 31 | 1 |
| 47-6730 | Seal | 5 | 21 | 4 | 71-1260 | Decal - Pro Line | 3 | 1 | 1 |
| 47-7260 | Seal | 6 | 73 | 1 | 71-1280 | Decal - Safety Instructions | 2 | 55 | 1 |
| 47-7270 | Bearing - Needle | 5 | 11 | 2 | 71-9280 | Filter - Fuel | 8 | 11 | 1 |
| 48-2060 | Bearing - Needle | 5 | 3 | 4 | 71-9350 | Bracket - Spring | 1 | 11 | 1 |
| 48-2170 | Cap - End | 5 | 7 | 2 | 74-1640 | Cover - Wheel | 6 | 59 | 2 |
| 48-2810 | Rod - Bag Support | 7 | 2 | 1 | 74-1650 | Spacer - Wheel | 6 | 58 | 2 |
| 48-2840 | Door - Bag, Grass | 9 | 1 | 1 | 74-1720 | Wheel & Tire Assembly | 6 | * | 2 |
| 49-1630 | Support - Spacer | 7 | 6 | 2 | 74-1741 | Bracket - Traction Adj. | 2 | 31 | 1 |

*Not Illustrated

TORO PART NUMBER INDEX (Cont.)

3319-644

| Part No. | Description | Pg. No. | Ref. No. | Qty. | Part No. | Description | Pg. No. | Ref. No. | Qty. |
|----------|----------------------------|---------|----------|------|----------|----------------------------|---------|----------|------|
| 74-1750 | Bracket - Traction, Engage | 5 | 17 | 1 | 81-1120 | Washer - Lock | 11 | 7 | 2 |
| 74-1760 | Gear - Bevel | 6 | 63 | 1 | 81-1140 | Screw - Phillips Hd. | 11 | 10 | 2 |
| 74-1770 | Cover - Belt | 1 | 27 | 1 | 81-1150 | Bolt - Self Tapping | 11 | 9 | 1 |
| 74-1791 | Cable - Traction | 7 | 33 | 1 | 81-1170 | Bolt - Self Tapping | 13 | 12 | 1 |
| 74-1810 | Washer | 6 | 61 | 2 | 81-1210 | Pulley - Rope | 14 | 6 | 1 |
| 74-1851 | Pivot Arm Assembly | 5 | 2 | 2 | 81-1220 | Spring - Dog | 14 | 12 | 1 |
| 74-1861 | Gear Case Assembly | 6 | * | 1 | 81-1230 | Dog - Starter | 14 | 13 | 1 |
| 74-1890 | Shaft - Output | 5 | 8 | 1 | 81-1240 | Spring - Compression | 14 | 11 | 1 |
| 74-1920 | Case - Lower | 5 | 40 | 1 | 81-1250 | Retainer - Dog | 14 | 14 | 1 |
| 74-1960 | Lever - Shift | 5 | 22 | 1 | 81-1260 | Bolt - Shoulder | 14 | 15 | 1 |
| 74-1970 | Decal - Traction Drive | 2 | 30 | 1 | 81-1270 | Rope | 14 | 5 | 1 |
| 74-2110 | Bracket - Tank | 8 | 1 | 1 | 81-1280 | Bolt | 14 | 9 | 4 |
| 76-4640 | Latch - Plug | 1 | 21 | 1 | 81-1300 | Bolt | 14 | 3 | 3 |
| 76-4650 | Grip - Latch | 1 | 22 | 1 | 81-1330 | Nut | 12 | 2 | 1 |
| 76-4660 | Spring | 1 | 13 | 1 | 81-1450 | Washer - Lock | 13 | 9 | 1 |
| 77-0040 | Decal - Recoil | 3 | 3 | 1 | 81-1480 | Clamp | 12 | 6 | 1 |
| 77-0500 | Plug - Discharge | 1 | 20 | 1 | 81-1500 | Cap Assembly - Spark Plug | 12 | 10 | 1 |
| 77-0520 | Support - Bracket | 8 | 8 | 1 | 81-1630 | Handle - Recoil | 14 | 4 | 1 |
| 77-2840 | Retainer - Tank, Fuel | 8 | 2 | 1 | 81-1710 | Lever - Choke | 13 | 20 | 1 |
| 77-5260 | Strap - Insulation | 4 | 4 | 1 | 81-1730 | Bolt - Bracket, Throttle | 13 | 21 | 1 |
| 77-5270 | Lever - Control | 7 | 12 | 1 | 81-1750 | Washer - Lever, Choke | 13 | 8 | 2 |
| 80-3770 | Retainer - Door | 1 | 14 | 1 | 81-1770 | Spacer - Lever, Governor | 13 | 6 | 1 |
| 81-0090 | Gasket | 15 | 2 | 1 | 81-1830 | Insulator - Kill Switch | 13 | 14 | 1 |
| 81-0090 | Gasket | 3 | 4 | 1 | 81-1840 | Terminal - Kill Switch | 13 | 11 | 1 |
| 81-0181 | Spark Plug | 12 | 7 | 1 | 81-1950 | Shaft - Choke | 15 | 7 | 1 |
| 81-0200 | Spark Arrester (Optional) | 11 | 2 | 1 | 81-2080 | Cover - Fan, Cooling | 14 | 1 | 1 |
| 81-0220 | Bushing - Choke | 15 | 5 | 1 | 81-2100 | Case - Starter | 14 | 8 | 1 |
| 81-0230 | Spring - Choke | 15 | 4 | 1 | 81-2120 | Guard - Spark Plug | 12 | 8 | 1 |
| 81-0240 | Valve - Choke | 15 | 3 | 1 | 81-2140 | Piston - 58mm | 10 | 5 | 1 |
| 81-0250 | Shaft - Throttle | 15 | 8 | 1 | 81-2160 | Screw - Choke Plate | 15 | 6 | 2 |
| 81-0260 | Valve - Throttle | 15 | 9 | 1 | 81-2170 | Cup - Pulley, Starter | 14 | 2 | 1 |
| 81-0270 | Screw - Throttle | 15 | 10 | 1 | 81-2300 | Spring & Retainer Assembly | 14 | * | 1 |
| 81-0520 | Pin - Crankcase | 10 | 20 | 2 | 81-2340 | Jet - Main #72.5 High Alt. | 15 | * A/R | |
| 81-0540 | Bolt | 13 | 13 | 1 | 81-2350 | Bolt - Self Tapping | 12 | 9 | 2 |
| 81-0540 | Bolt 30mm Lg. | 10 | 15 | 5 | 81-2370 | Key - Flywheel | 12 | 4 | 1 |
| 81-0560 | Plate - Mounting | 10 | 19 | 1 | 81-2420 | Bracket - Throttle | 13 | 15 | 1 |
| 81-0570 | Bolt | 10 | 18 | 4 | 81-2430 | Clamp - Cable | 13 | 18 | 1 |
| 81-0590 | Piston Ring Set | 10 | 2 | 1 | 81-2450 | Cover - Muffler | 11 | 5 | 1 |
| 81-0600 | Pin - Wrist | 10 | 4 | 1 | 81-2460 | Spring - Lever, Choke | 13 | 5 | 1 |
| 81-0610 | Bearing - Wrist Pin | 10 | 17 | 1 | 81-2470 | Spacer - Lever, Choke | 13 | 17 | 1 |
| 81-0620 | Circlip | 10 | 3 | 2 | 81-2520 | Carburetor Ass'y | 15 | * | 1 |
| 81-0690 | Bearing - Upper 20mm | 10 | 8 | 1 | 81-2530 | Seal | 15 | 25 | 2 |
| 81-0700 | Bearing - Lower 25mm | 10 | 12 | 1 | 81-2540 | Ring | 15 | 26 | 1 |
| 81-0710 | Washer - Thrust, Upper | 10 | 7 | 1 | 81-2550 | Packing | 15 | 27 | 1 |
| 81-0720 | Seal - Oil, Upper | 10 | 6 | 1 | 81-2580 | Spring - Idle Stop | 15 | 15 | 1 |
| 81-0730 | Washer - Thrust, Lower | 10 | 13 | 1 | 81-2600 | Pin - Float | 15 | 17 | 1 |
| 81-0740 | Seal - Oil, Lower | 10 | 14 | 1 | 81-2810 | Flywheel - Magneto | 12 | 3 | 1 |
| 81-0750 | Bracket - Arm, Governor | 10 | 11 | 1 | 81-2820 | Coil/Ignition Assembly | 12 | 5 | 1 |
| 81-0760 | Pin - Crankshaft | 10 | 16 | 1 | 81-2830 | Spring - Governor | 13 | 25 | 1 |
| 81-0770 | Spacer - Governor | 10 | 10 | 1 | 81-2850 | Lever - Governor | 13 | 7 | 1 |
| 81-0780 | Gasket - Carburetor | 15 | 12 | 3 | 81-2880 | Shaft - Governor | 13 | 4 | 1 |
| 81-0850 | Seal - Shaft, Governor | 13 | 22 | 1 | 81-4530 | Rivet - Kill Switch | 13 | 16 | 2 |
| 81-0860 | Washer | 13 | 23 | 1 | 81-4680 | Crankshaft/Connecting Rod | 10 | 9 | 1 |
| 81-0870 | Ring - Retaining | 13 | 24 | 1 | 81-4910 | Needle Valve | 15 | 18 | 1 |
| 81-0900 | Nut | 13 | 10 | 2 | 81-5410 | Rod - Choke | 13 | 3 | 1 |
| 81-0910 | Rod - Carburetor | 13 | 26 | 1 | 81-5420 | Governor Arm/Bolt Assy. | 13 | 2 | 1 |
| 81-0920 | Spring - Carburetor Rod | 13 | 1 | 1 | 81-5440 | Insulator - Carburetor | 15 | 14 | 1 |
| 81-0970 | Float | 15 | 20 | 1 | 81-5450 | Stud Bolt, Carburetor | 15 | 1 | 2 |
| 81-1010 | Gasket - Bowl, Float | 15 | 21 | 1 | 81-5490 | Shield - Carburetor | 15 | 13 | 1 |
| 81-1020 | Gasket - Capscrew, Bowl | 15 | 23 | 1 | 81-5660 | Bowl - Float | 15 | 22 | 1 |
| 81-1060 | Jet - Main #75 | 15 | 19 | 1 | 81-5670 | Capscrew - Bowl | 15 | 24 | 1 |
| 81-1080 | Gasket - Muffler | 11 | 1 | 1 | 81-5680 | Screw - Cap, Hex Hd. | 12 | 1 | 2 |
| 81-1100 | Bolt | 11 | 6 | 2 | 81-5690 | Muffler | 11 | 4 | 1 |
| 81-1110 | Nut | 11 | 8 | 2 | 81-5810 | Seat Kit | 15 | * | 1 |

*Not Illustrated

TORO PART NUMBER INDEX (Cont.)

| Part No. | Description | Pg. No. | Ref. No. | Qty. | Part No. | Description | Pg. No. | Ref. No. | Qty. |
|----------|----------------------------|---------|----------|------|-----------|-------------------------|---------|----------|------|
| 81-5940 | Starter Assembly | 14 | * | 1 | 323-12 | Screw - Hex Hd. Cap | 2 | 45 | 2 |
| 82-2380 | Decal - Traction Control | 7 | 17 | 1 | 323-13 | Screw - Cap, Hex. Hd. | 6 | 57 | 2 |
| 82-9152 | Chute - Discharge | 1 | 9 | 1 | 3253-22 | Washer - Lock | 3 | 23 | 1 |
| 82-9950 | Bracket - Control Throttle | 7 | 21 | 1 | 3254-6 | Washer - Internal Tooth | 3 | 18 | 3 |
| 84-7820 | Plate - Mounting | 4 | 2 | 1 | 3256-16 | Washer | 3 | 7 | 1 |
| 84-8361 | Latch - Handle - L.H. | 7 | 30 | 1 | 3256-22 | Washer - Flat | 7 | 9 | 1 |
| 84-8401 | Latch - Handle - R.H. | 7 | * | 1 | 3256-22 | Washer - Flat | 1 | 10 | 2 |
| 84-9160 | Mount - Tank, Bottom | 8 | 12 | 1 | 3256-45 | Washer - Flat | 6 | 75 | 1 |
| 85-6904 | Cable - Brake | 7 | 7 | 1 | 3257-1 | Key - Woodruff | 6 | 74 | 2 |
| 85-6904 | Cable - Brake | 4 | 8 | 1 | 3285-19 | Pin - Groove | 5 | 35 | 1 |
| 92-1599 | Stiffener - Blade | 3 | 21 | 1 | 3290-378 | Tie - Cable | 1 | 24 | 1 |
| 92-1720 | Kicker | 2 | 54 | 1 | 3290-378 | Tie - Cable | 7 | 24 | 3 |
| 92-1730 | Kicker | 1 | 6 | 1 | 3290-422 | Nut - Push, Washer Cap | 9 | 2 | 2 |
| 92-1750 | Kicker | 1 | 23 | 1 | 3290-456 | Washer - Flat | 7 | 26 | 4 |
| 92-4957 | Wheel - Half & Gear | 6 | 49 | 2 | 3290-459 | Rivet | 4 | 3 | 2 |
| 92-6316 | Fitting - Grease | 5 | 6 | 2 | 3295-35 | Rivet | 1 | 25 | 1 |
| 92-9698 | Screw - Shoulder, Metric | 4 | 6 | 1 | 3296-5 | Nut - Lock | 5 | 16 | 1 |
| 92-9788 | Decal - Recycler | 2 | 53 | 1 | 3296-6 | Nut - Lock | 2 | 51 | 2 |
| 93-3154 | Plate - Latch | 1 | 16 | 1 | 3296-29 | Nut - Lock | 7 | 25 | 4 |
| 93-7351 | Door Assembly | 1 | 15 | 1 | 3296-42 | Nut - Lock | 8 | 7 | 1 |
| 94-1684 | Jet - Pilot #42.5 | 15 | 11 | 1 | 3296-42 | Nut - Lock | 7 | 10 | 4 |
| 94-1685 | Crankcase/Cylinder Assy. | 10 | 1 | 1 | 3296-42 | Nut - Lock | 1 | 19 | 10 |
| 94-1687 | Carburetor Ass'y w/Primer | 15 | * | 1 | 3296-42 | Nut - Lock | 6 | 54 | 8 |
| 94-5827 | Tank - Gas | 8 | 4 | 1 | 3296-47 | Nut - Lock | 7 | 32 | 2 |
| 98-2000 | Handle | 7 | 1 | 1 | 3296-58 | Nut - Lock | 7 | 13 | 2 |
| 98-2041 | Short Block | 10 | * | 1 | 32111-7 | Nut - Acorn | 7 | 23 | 2 |
| 98-7139 | Housing - Commercial | 1 | 4 | 1 | 32121-99 | Pin - Roll | 5 | 19 | 1 |
| 98-9222 | Bag - Grass | 9 | 6 | 1 | 32144-10 | Screw - Self Tapping | 4 | 1 | 1 |
| 2412-95 | Clamp - Fuel Line | 8 | 5 | 4 | 32144-70 | Screw - Thread Forming | 3 | 19 | 3 |
| 252-103 | Bearing - Closed | 6 | 69 | 2 | 32144-70 | Screw - Thread Forming | 2 | 32 | 1 |
| 256-276 | Spacer | 7 | 20 | 2 | 32144-111 | Screw - Pan Hd. | 1 | 5 | 6 |
| 257-3 | Washer - Pivot | 2 | 48 | 2 | 32144-112 | Screw - Self Tapping | 4 | 11 | 1 |
| 302-63 | Fitting - Grease | 5 | 13 | 1 | 32151-36 | Ring - Retaining | 6 | 62 | 2 |
| 321-2 | Screw - Hex Hd. Cap | 2 | 47 | 8 | 32151-57 | Ring - Retaining | 6 | 70 | 1 |
| 321-2 | Screw - Hex Hd. Cap | 6 | 48 | 8 | 32151-68 | Ring - Klip | 5 | 47 | 4 |
| 321-4 | Screw - Hex Hd. Cap | 7 | 19 | 2 | 32151-86 | E-Ring | 7 | 15 | 2 |
| 321-7 | Screw - Hex Hd. Cap | 1 | 18 | 2 | 32152-2 | Nut - Lock | 2 | 49 | 2 |
| 321-9 | Screw - Hex Hd. Cap | 7 | 34 | 1 | 32152-2 | Nut - Lock | 6 | 60 | 2 |
| 321-13 | Screw - Hex Hd. Cap | 7 | 4 | 2 | | | | | |
| 321-15 | Screw - Hex Hd. Cap | 7 | 3 | 1 | | | | | |
| 322-6 | Screw - Hex Hd. Cap | 7 | 28 | 2 | | | | | |
| 322-7 | Screw - Hex Hd. Cap | 7 | 27 | 2 | | | | | |
| 322-10 | Screw - Hex Hd. Cap | 7 | 5 | 2 | | | | | |
| 323-6 | Screw - Cap, Hex. Hd. | 8 | 14 | 2 | | | | | |

OPTIONAL EQUIPMENT

Side Discharge Chute Model No. 59199
 Spark Arrestor Muffler Part No. 81-0200

