



Wheel Horse[®]

522xi

**Lawn and Garden
Tractor**

Model No. 73560-8900001 & Up

Parts Catalog

ORDERING REPLACEMENT PARTS

To order replacement parts, please supply: the part number, the quantity, and the description of each part desired.

Contents

Description	Page	Description	Page
Bumper and Hood Assembly	1	Lower Parking Brake Assembly	23
Steering Tower and Fuel Tank Assembly	2	Cruise Control Assembly	24
Attach A Matic and Hitch Assembly	3	Fuel System Assembly	25
Lower Power Steering Assembly	4	Wheel Assembly	26
Power Steering and Tilt Assembly	5	Air Cooled Engine Assembly	27
Tie Rods, Spindle & Front Axle Assembly	6	Electrical Assembly	28
Hydro Trans Axle Assembly	7	Wiring Harness Routing	29
Hydro Trans Axle Assembly (Continued)	8	Electrical Schematic Diagram	30
Transmission Assembly	9	Crankshaft	31
Transmission Assembly	10	Crankshaft Assembly	32
Drive Shaft Assembly	11	Oil Pan/Lubrication Assembly	33
Hydro Lift Lower Assembly	12	Head, Valve and Breather Assembly	34
Hydro Lift Upper Assembly	13	Ignition and Electrical Assembly	35
Hood & Headlight Assembly	14	Blower Housing and Baffles Assembly	36
Grille and Side Panel Assembly	15	Starting System Assembly	37
Dash Assembly	16	Fuel System Assembly	38
Fender, Footrest and Seat Assembly	17	Engine Controls Assembly	39
Smart Turn Rear Assembly	18	Air Intake Assembly	40
Hi–Lo Shift Assembly	19	Exhaust	41
Upper Parking Brake Assembly	20		
Hydro Controls Assembly	21	Note:	
Smart Turn Front Assembly	22		

Accessories

Description	Model / Parts No.	Description	Model / Parts No.
36" Tiller*	79375	Rear Wheel Weights (Plastic)	81115
50" Grader Blade*	79356	Flush Mount Rear Wheel Weights (Cast Iron) .	81117
Rear Attach–A–Matic	95–4220	Front Wheel Weights (Cast Iron)	81214
ROPS	79210	Tire Chains	82146
Clevis Hitch	94–7800	Dual Wheel Adapter	94–2050
42" Single Stage Snowthrower**	79365		
44" Two–Stage Snowthrower**	79366	Note: * Requires 95–4220	
48" Snow/Dozer Blade**	79355	** Requires 81115	
42" Rear Discharge Mower	78353		
44" Side Discharge Mower	78357		
44" Recycler Mower	78358		
48" Side Discharge Mower	78363		
48" Recycler Mower	78364		
52" Side Discharge Mower	78370		
52" Recycler Mower	78375		
60" Side Discharge Mower	78395		

Part Description Abbreviations

Part descriptions in this catalog may include the following abbreviations.

Abbreviation	Meaning	Abbreviation	Meaning
AR	as required	HWHTF	hex washer head thread forming
ASM	assembly	INC	incorporated
CARR	carriage	LH	left hand
DEG	degrees	PH	pan head
FH	flat head	PPH	Phillips pan head
GA	gauge	PTO	power take off
HF	hex flange	RH	right hand
HFV	hex flange washer	SFH	slotted fillister head
HH	hex head	SH	square head
HHF	hex head flange	SHWH	slotted hex washer head
HHST	hex head self tapping	SPH	slotted pan head
HJ	hex jam	STD	standard
HOC	height-of-cut	TAP	self tapping
HS	hex socket	TH	truss head
HSBH	hex socket button head	TTH	Torx truss head
HSFH	hex socket flat head	WH	wing head
HSH	hex socket head		
HWH	hex washer head		

Important Format Explanations

This catalog uses special formats to convey information in illustrations and parts lists. Specifically, one format is used in conjunction with service assemblies and another with quantities associated with reference numbers.

Service Assemblies

Parts within service assemblies have reference numbers in the form $X:Y$. X is the reference number of the service assembly and Y is a sequential number unique to each part within the service assembly.

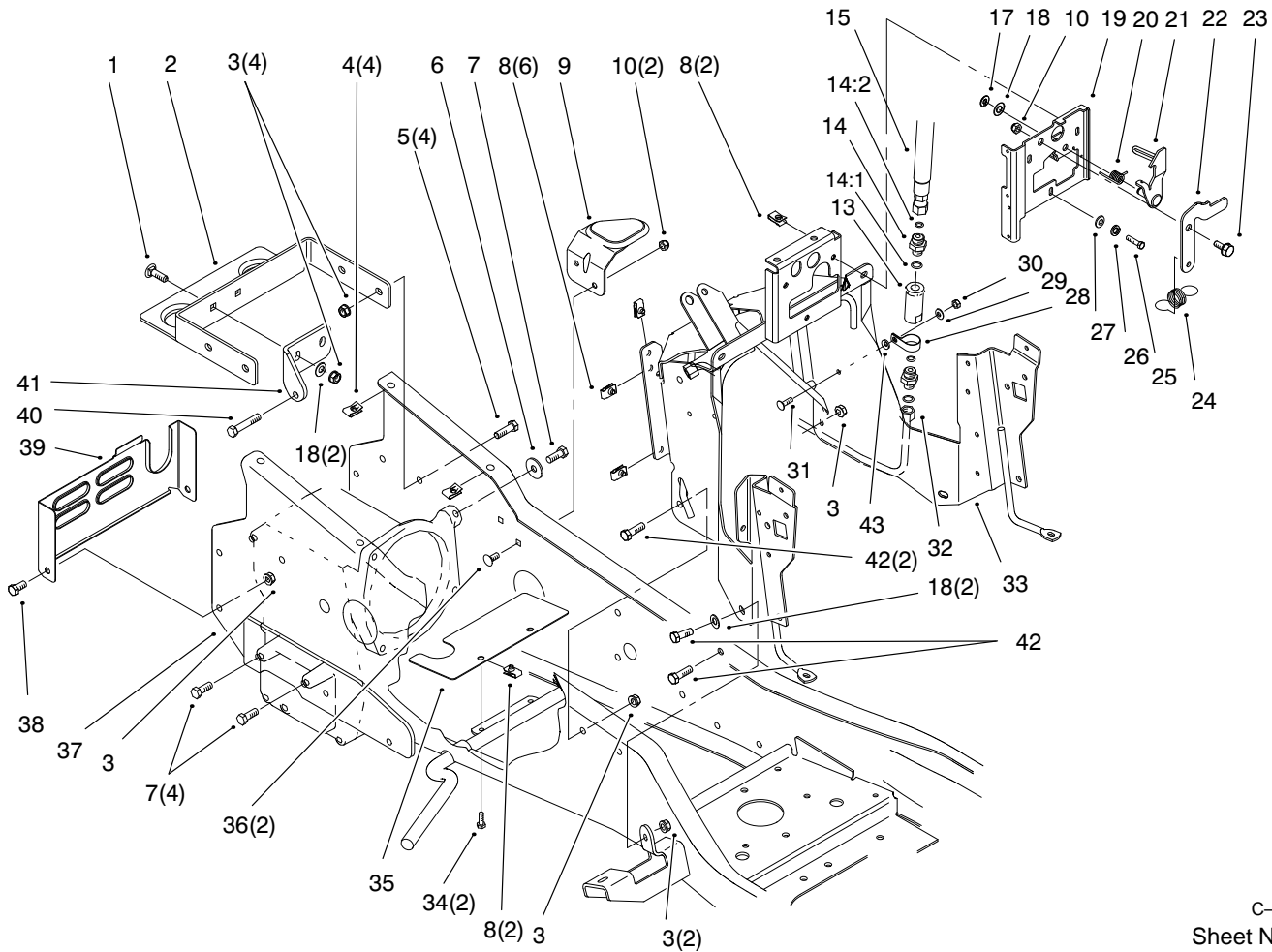
For example, a wheel assembly might be identified by reference number 6, the tire by 6:1, the valve by 6:2, and the wheel by 6:3. When you order the assembly identified by reference number 6, you receive all parts identified by reference numbers 6:1, 6:2, and 6:3. However, you may also order any part individually.

Reference numbers of this type appear in part lists and as callouts in illustrations.

Reference Numbers with Quantities

Illustrations may have a quantity in parentheses next to a reference number, in the form $X (Y)$. X is the reference number. Y in parentheses is the quantity of the part identified by the reference number.

For example, the illustration callout 4 (2) indicates that two parts are used in that instance.

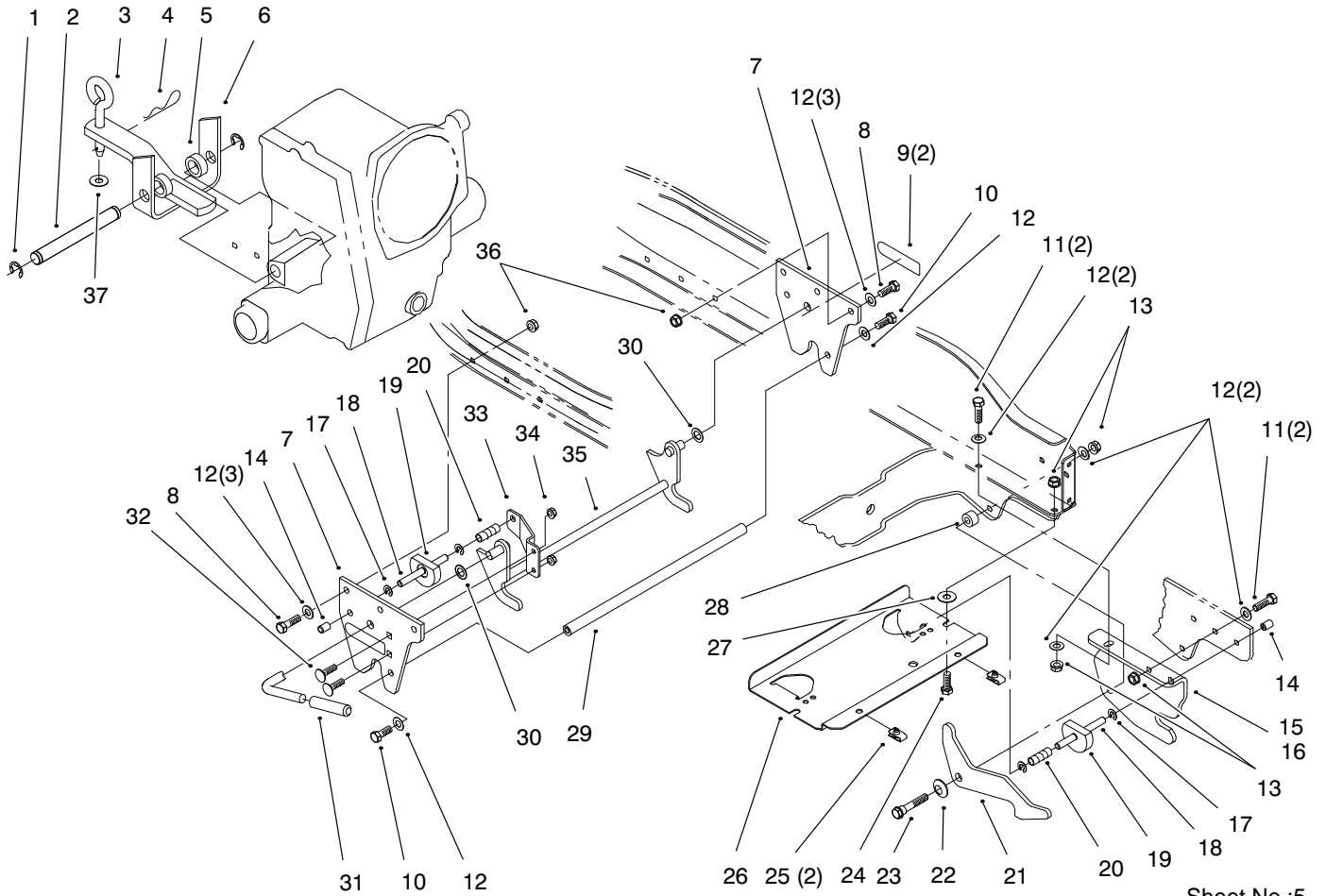


C-2729
Sheet No.:4

Steering Tower and Fuel Tank Assembly

Ref. No.	Part No.	Qty.	Description
1	3231-25	2	Screw-CARR
2	94-7740-03	1	Support - Gas Tank
3	3296-39	10	Nut-Lock
4	94-2413	4	U-Nut
5	323-7	4	Screw-HH
6	2844	1	Washer-Flat
7	3235-22	5	Screw-HH
8	107069	10	Nut-Panel
9	95-3961-03	1	Support-Fuel Tank
10	3296-29	3	Nut-Lock
13	95-3991	1	Filter-Hydraulic Screen
14	95-4138	2	Fitting-Hydraulic
14:1	237-22	2	O-Ring
14:2	237-42	2	O-Ring
15	95-3807	1	Hose ASM
17	105797	1	Ring-Retaining
18	3256-24	5	Washer-Flat
19	95-3892-03	1	Bracket-Latch
20	95-4165	1	Spring-Torsion
21	95-3899	1	Latch Lever
22	95-3900	1	Tension Lever-Latch
23	37-8771	1	Bolt-Shoulder
24	95-3895	1	Spring-Extension
25	321-4	3	Screw-HH
26	3253-3	3	Washer-Lock

Ref. No.	Part No.	Qty.	Description
27	3256-22	3	Washer-Flat
28	2412-106	1	R Clamp
29	3256-22	1	Washer-Flat
30	3296-42	1	Nut-Lock
31	3229-1	1	Bolt-CARR
32	94-7971	1	Tube-Hydraulic
33	94-7643-03	1	Tower ASM
34	321-4	2	Screw-HH
35	95-4246	1	Baffle-Fan
36	3230-1	2	Bolt-CARR
37	94-2083-03	1	Frame
38	323-4	2	Screw-HH
39	95-4005-03	1	Cover-Rear
40	94-7972	1	Screw-HH
41	94-7739-03	1	Strap-Torque
42	323-6	4	Screw-HH
43	32115-15	1	Retainer



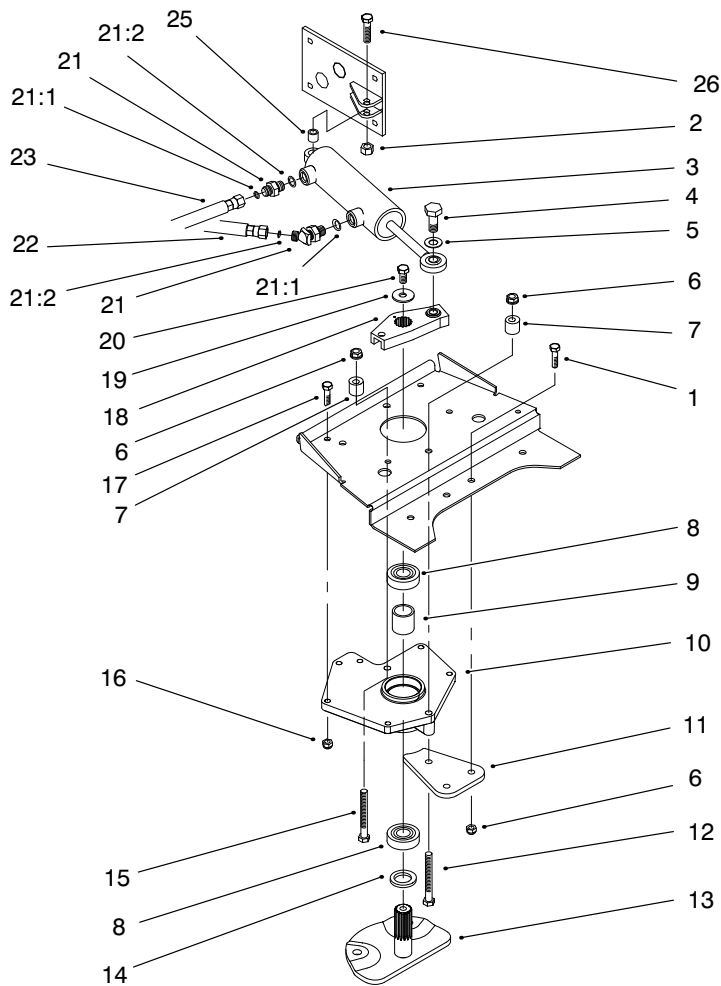
Sheet No.:5

Attach A Matic and Hitch Assembly

Ref. No.	Part No.	Qty.	Description
1	5618	2	Ring-Retaining
2	105269	1	Pin-Hitch
3	106634	1	Pin-Attachment
4	9335054	1	Hairpin
5	9791204	2	Spacer
6	98-8083	1	Hitch ASM
7	94-2251-03	2	Plate-Hitch
8	323-44	6	Screw-HH
9	98-1632	2	Decal-Attach A Matic
10	3235-22	2	Screw-HH
11	323-7	4	Screw-HH
12	3256-24	16	Washer-Flat
13	3296-39	8	Nut-Lock
14	105316	3	Cap-Rod
*15	94-2230-03	1	Hanger RH
16	94-2231-03	1	Hanger LH
17	105797	6	Ring-Retaining
18	94-2256	3	Rod-Lock
19	94-2258	3	Lock-Latch
20	8616	3	Spring-Compression
21	94-7777-03	2	Latch-Pulley Box
22	3290-221	2	Washer-Spring
23	92-7674	2	Bolt-Shoulder
24	323-6	2	Screw-HH
25	107069	2	Nut-Panel
26	94-2304-03	1	Tray-Battery

Ref. No.	Part No.	Qty.	Description
27	3-4685	2	Washer-Thrust
28	94-2233	2	Spacer
29	94-2475	1	Rod-Spacer
30	98-1629	2	Washer
31	9038	1	Grip
32	3230-2	2	Screw-CARR
33	94-7855-03	1	Mid Bracket ASM
34	3296-29	2	Nut-Lock
35	94-2250-03	1	Latch ASM
36	108881	6	Nut-Hex
37	3256-26	1	Washer-Flat

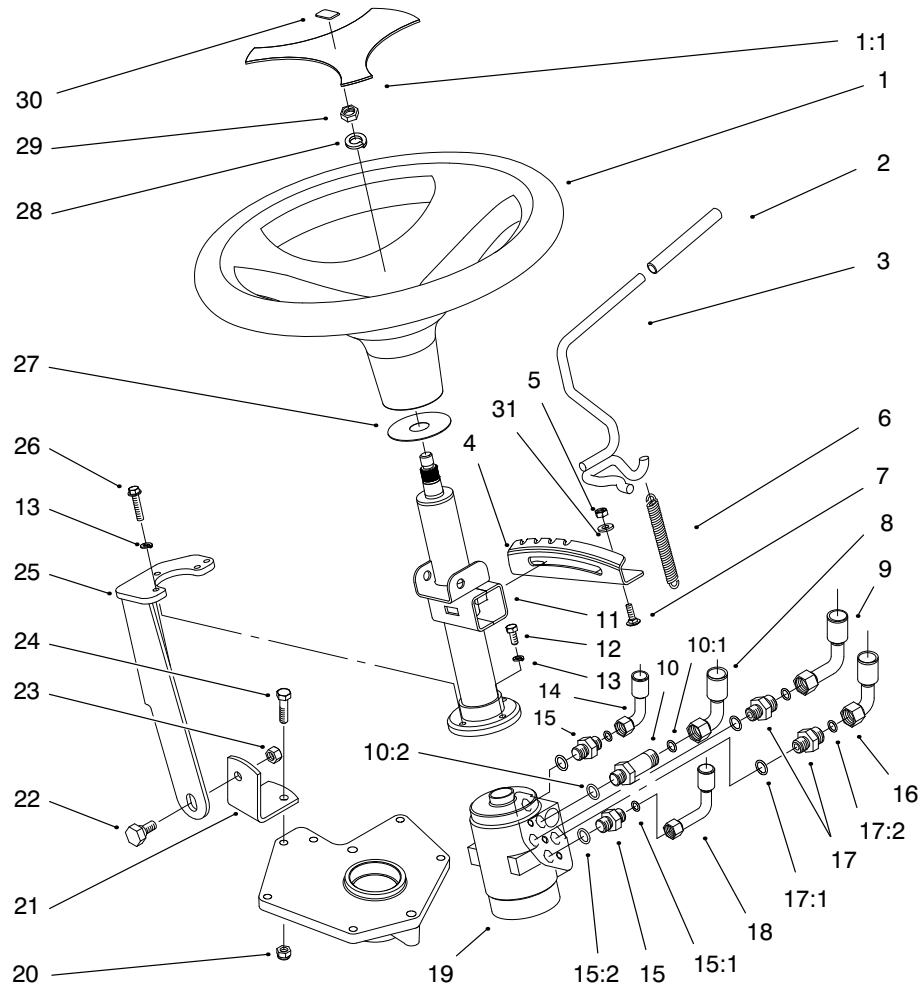
* Not illustrated



Sheet No.:8

Lower Power Steering Assembly

Ref. No.	Part No.	Qty.	Description	Ref. No.	Part No.	Qty.	Description
1	323-7	2	Screw-HH	21:2	237-21	2	O-Ring
2	108881	1	Nut-Hex	22	94-7946	1	Hose ASM
3	95-3965	1	Cylinder-Hydraulic	23	94-7947	1	Hose ASM
4	94-7976	1	Screw-HH	25	94-7907	1	Spacer
5	98-3087	1	Washer-Power Steering	26	323-8	1	Screw-HH
6	3296-39	4	Nut-Lock				
7	94-7819	2	Spacer-Stop				
8	251-82	2	Bearing-Ball				
9	94-2219	1	Spacer				
10	94-7581	1	Housing-Power Steering				
11	94-7820-03	1	Plate-Power Steering				
12	323-15	1	Screw-HH				
13	94-2142-03	1	Arm-Lower				
14	3256-42	1	Washer-Flat				
15	323-10	1	Screw-HH				
16	3296-29	4	Nut-Lock				
17	322-6	4	Screw-HH				
18	94-7556	1	Arm-Upper				
19	2844	1	Washer-Flat				
20	98-3052	1	Screw-Thread Locking				
21	95-4136	2	Fitting-Hydraulic 45 DEG				
21:1	237-42	2	O-Ring				



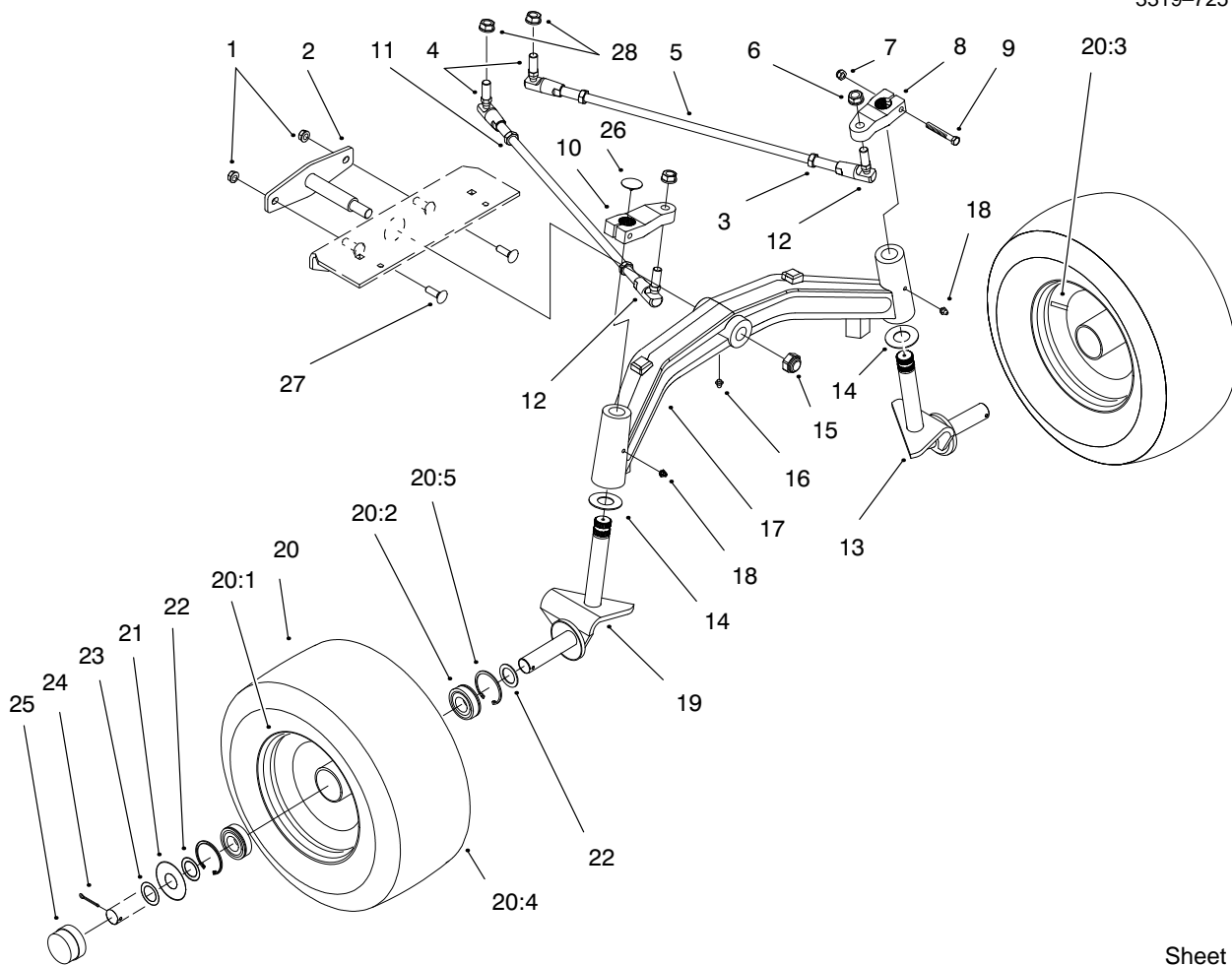
Sheet No.:9

Power Steering and Tilt Assembly

Ref. No.	Part No.	Qty.	Description
1	98-1474	1	Steering Wheel ASM
1:1	98-7211	1	Cover ASM (Incl. Ref. #17)
2	92-6798	1	Cap-Rod
3	95-3964	1	Lever-Tilt
4	94-2382	1	Bracket
5	3296-42	2	Nut-Lock
6	95-3805	1	Spring
7	3229-1	2	Screw-CARR
8	94-7947	1	Hose ASM
9	94-7949	1	Hose ASM
10	95-4137	1	Fitting-Hydraulic Long
10:1	237-42	1	O-Ring
10:2	237-22	1	O-Ring
11	94-2451	1	Power Column ASM
12	33103-020	1	Screw-HHF
13	48-8020	4	Washer-Lock
14	94-7948	1	Hose ASM
15	95-4139	2	Fitting-Hydraulic Straight
15:1	237-42	2	O-Ring
15:2	237-21	2	O-Ring
16	95-3807	1	Hose ASM
17	95-4138	2	Fitting-Hydraulic
17:1	237-22	2	O-Ring
17:2	237-42	2	O-Ring

Ref. No.	Part No.	Qty.	Description
18	94-7946	1	Hose ASM
19	94-7567	1	Control Unit
20	3296-29	2	Nut-Lock
21	94-7599-03	1	Bracket-Pivot
22	94-7582	1	Bolt-Shoulder
23	108881	1	Nut-Hex
24	322-6	2	Screw-HH
25	94-7521-03	1	Power Steering Pivot
26	33103-025	3	Screw-HHF
27	94-2025	1	Washer-Boot
28	69-8420	1	Lockwasher
29	95-4182	1	Nut-HH Jam
30	98-1459	1	Decal
31	3256-22	2	Washer-Flat
*32	614249	2	Tie Strap

* Not illustrated



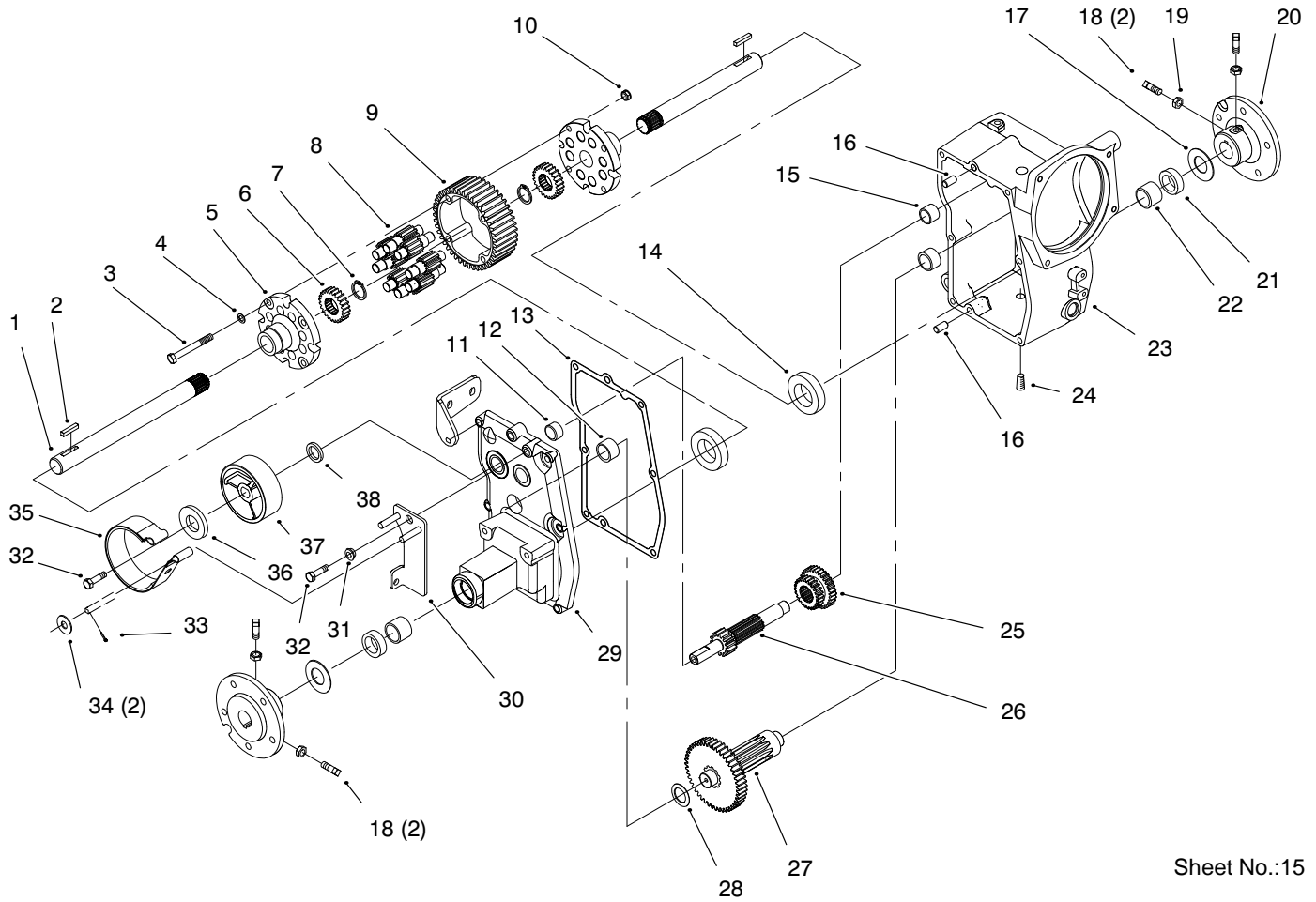
Sheet No.:14

Tie Rods, Spindle & Front Axle Assembly

Ref. No.	Part No.	Qty.	Description
1	3296-39	2	Nut-Lock
2	94-2205-03	1	Pivot Pin
3	3220-5	2	Nut-Hex
4	94-7539	2	Balljoint-LH Thread
5	94-2212	2	Rod-Steering
6	98-8088	2	Nut-Lock
7	3296-29	2	Nut-Lock
8	94-2197	1	Arm-LH Steering
9	322-32	2	Screw-HH
10	94-2196	1	Arm-RH Steering
11	3220-12	2	Nut-Hex
12	98-8086	2	Balljoint-RH Thread
13	94-7537-03	1	LH Spindle
14	9548	2	Washer-Thrust
15	3296-61	1	Nut-Hex
16	302-11	1	Fitting-Grease
17	94-7568-03	1	Axle-Front
18	302-5	2	Fitting-Grease
19	94-7536-03	1	RH Spindle
20	94-7542	2	Wheel & Tire ASM
20:1	94-7541	2	Wheel
20:2	94-7538	4	Bearing ASM (Incl. Ref. #20:5)
20:3	5108	2	Valve-Tire Tubeless
20:4	94-2191	2	Tire
20:5	94-2053	4	Snap Ring

Ref. No.	Part No.	Qty.	Description
21	95-4060	2	Washer-Wheel
22	9202514	4	Washer-Flat
23	9202524	A/R	Washer
24	3272-18	2	Pin-Cotter
25	94-7871	2	Cap-Dust
26	98-1642	2	Cap-Spindle
27	3231-25	2	Screw-CARR
28	98-8089	2	Nut-Lock
*	112819	2	Tube-Inner

* Not Illustrated

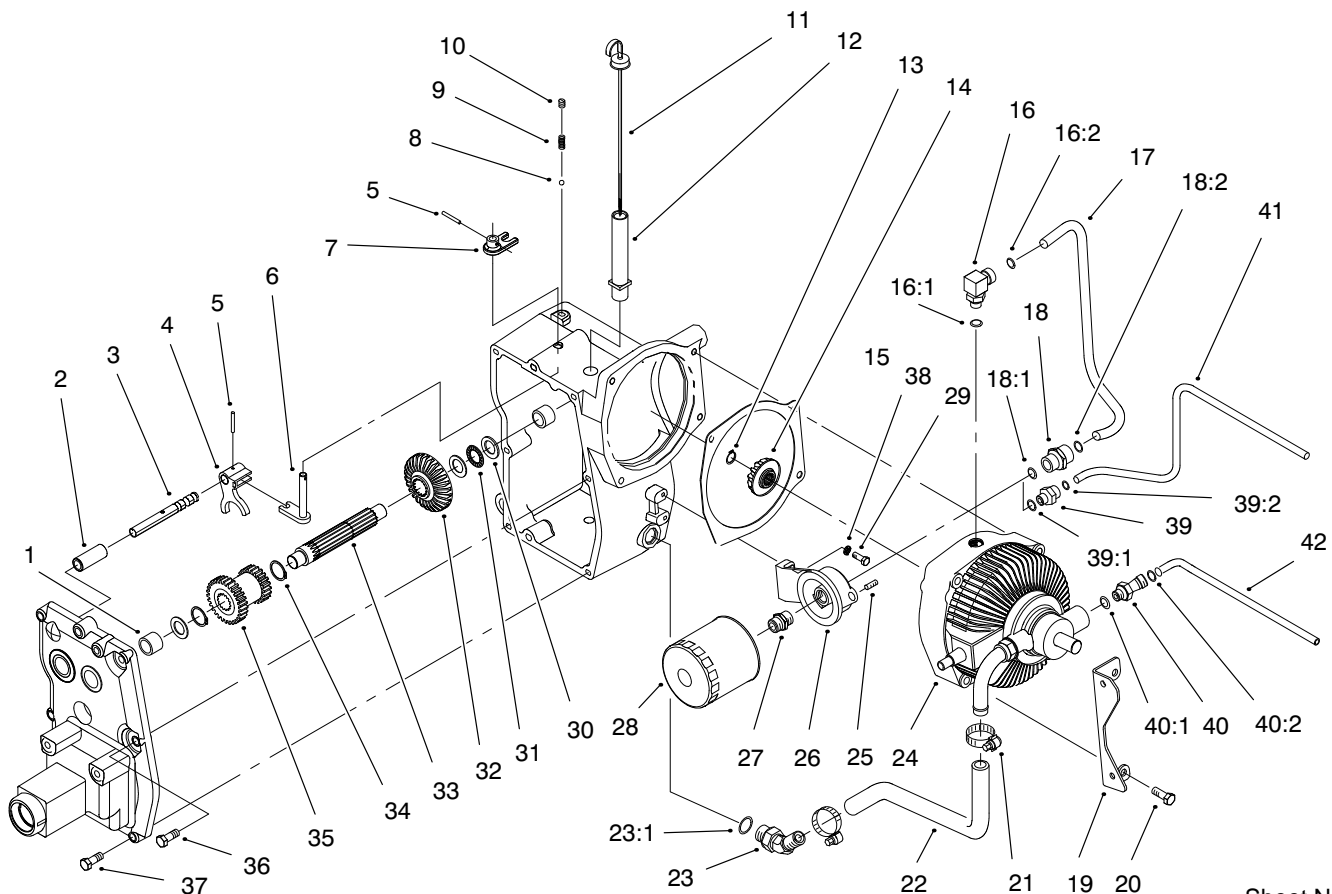


Sheet No.:15

Hydro Trans Axle Assembly

Ref. No.	Part No.	Qty.	Description
1	79-3340	2	Axle-Rear
2	79-3370	2	Key-Square
3	911423	4	Screw-HH
4	107374	4	Washer-Flat
5	111196	2	Cap-End
6	101889	2	Gear-Axle
7	105876	2	Ring-Retaining
8	101623	8	Gear-Pinion
9	105061	1	Gear-Differential
10	108881	4	Nut-Hex
11	1540	1	Bearing-Needle
12	94-2021	2	Bearing-Needle
13	94-2022	1	Gasket-Transaxle
14	111199	2	Bearing-Ball
15	1529	1	Bearing-Needle
16	108363	2	Pin-Locating
17	106826	2	Washer-Thrust
18	3243-5	4	Screw-Set
19	3218-3	4	Nut-HJ
20	105763-03	2	Hub-Wheel
21	6449	2	Seal-Oil
22	9416	2	Bearing-Needle
23	94-2001-03	1	Case-Transaxle
24	281-10	1	Plug-Pipe
25	94-2008	1	Gear-Sliding
26	94-2007	1	Shaft-Brake

Ref. No.	Part No.	Qty.	Description
27	94-2006	1	M-Gear
28	9547	1	Washer-Thrust
29	94-2002-03	1	Case-Transaxle
30	94-2019-03	1	Arm-Brake Pivot
31	100309	1	Bushing-Cam Pivot
32	3235-22	2	Screw-HH
33	3272-6	2	Pin-Cotter
34	3256-24	2	Washer-Flat
35	94-2419	1	Brake Band
36	2844	1	Washer-Flat
37	94-2009	1	Drum-Brake
38	253-44	1	Seal-Oil



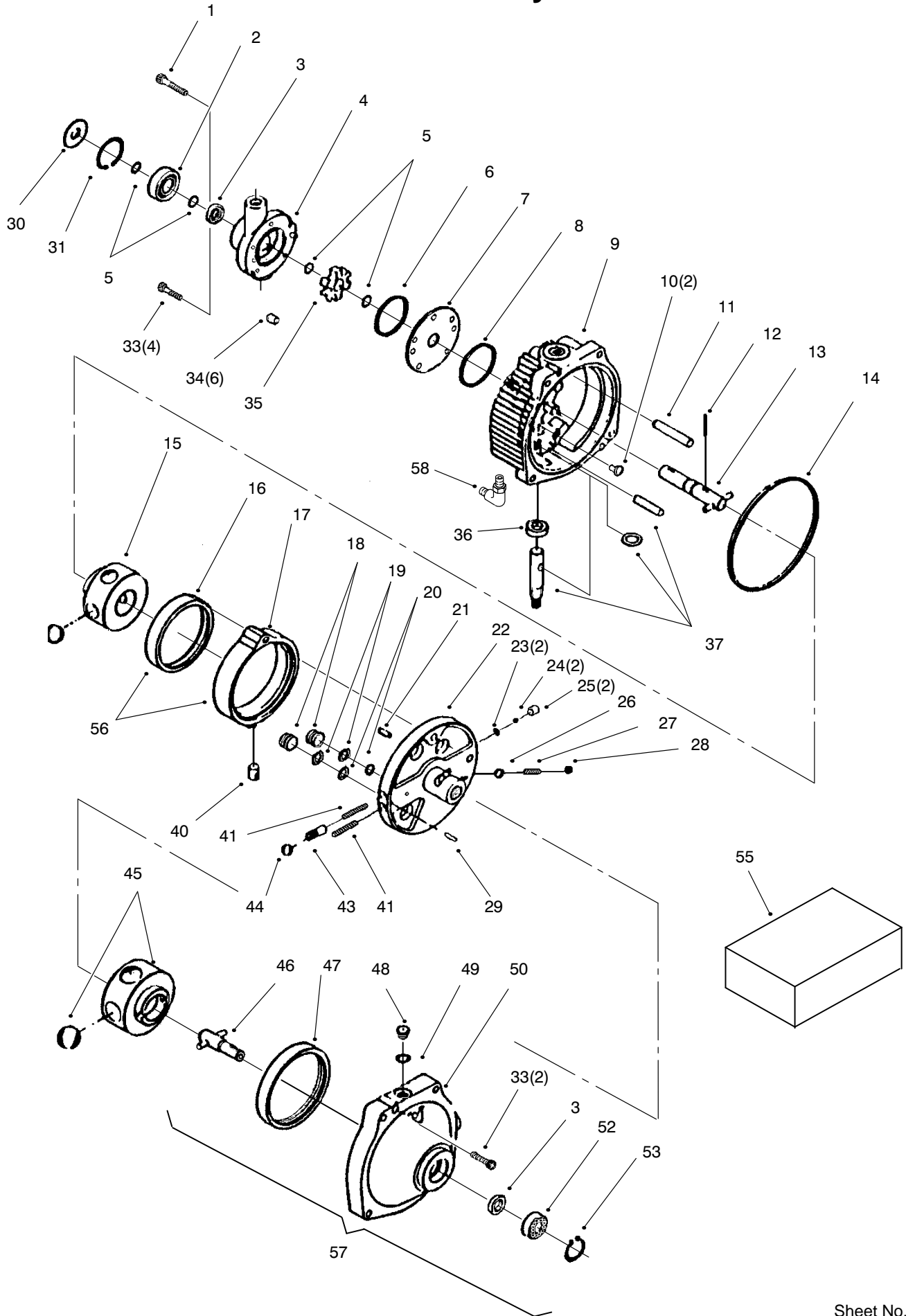
Sheet No.:16

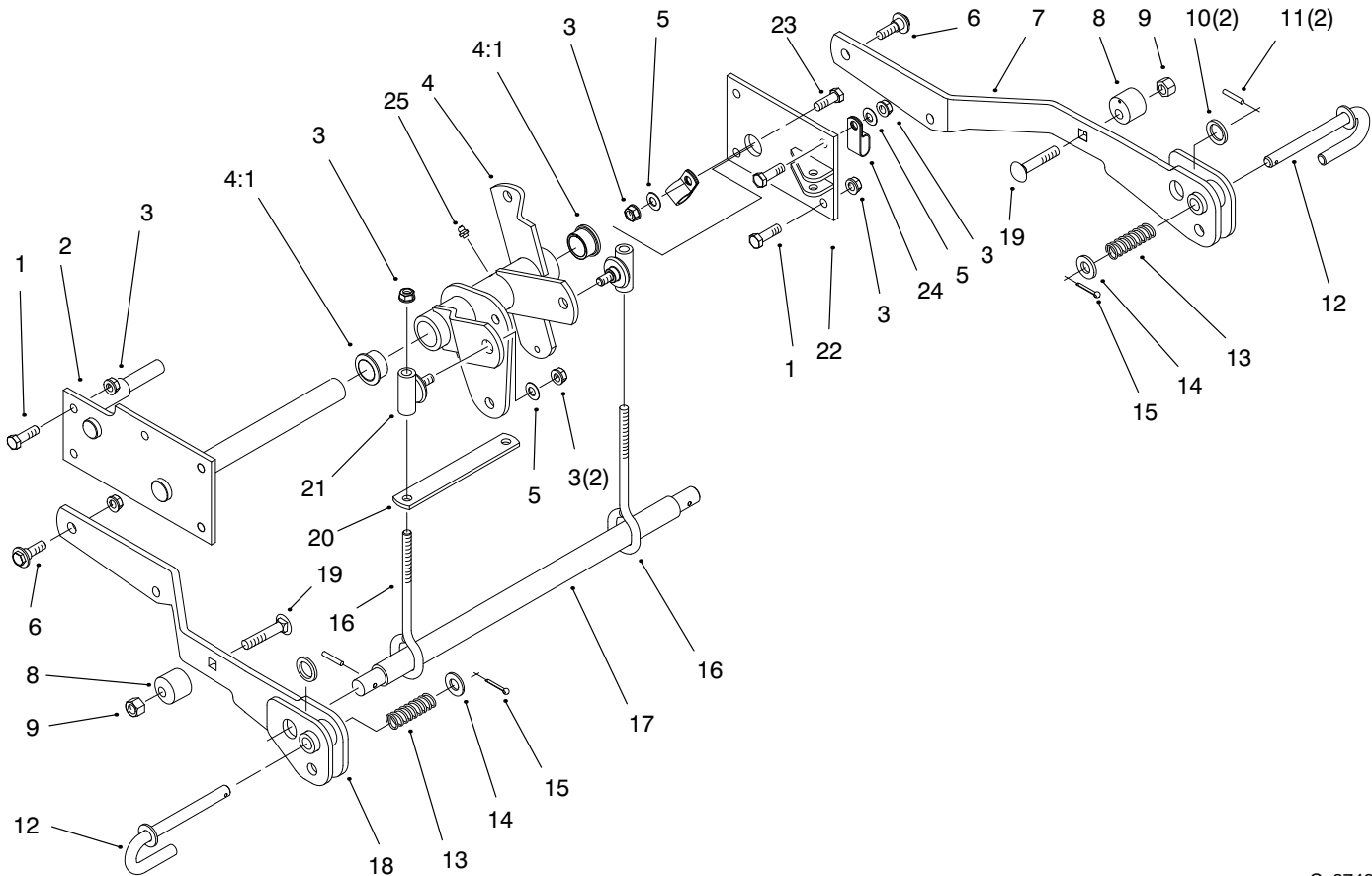
Hydro Trans Axle Assembly (Continued)

Ref. No.	Part No.	Qty.	Description
1	1529	2	Bearing-Needle
2	94-2014	1	Tube-Shifter Rail
3	94-2054	1	Rail-Shift
4	94-2015	1	Fork-Hi Lo Shift
5	933154	2	Pin-Spirol
6	94-2143	1	Arm-Shifter
7	94-7510	1	Arm-Hi Lo
8	3517	1	Ball
9	94-2024	1	Spring-Shift
10	3247-2	1	Screw-Set
11	94-7680-03	1	Dipstick
12	94-7559	1	Tube-Dipstick
13	32120-64	1	Ring-Retaining
14	94-7565	1	Pinion-Bevel
15	702062	1	Gasket-Pump & Motor
16	94-7693	1	Fitting-Hydraulic
16:1	237-42	1	O-Ring
16:2	237-30	1	O-Ring
17	94-7969	1	Tube-Hydraulic
18	94-7694	1	Fitting-Hydraulic
18:1	237-42	1	O-Ring
18:2	237-30	1	O-Ring
19	94-2148-03	1	Plate-Support Bracket
20	323-13	4	Screw-HH
21	2412-141	2	Clamp-Hose
22	95-4133	1	Hose-Suction

Ref. No.	Part No.	Qty.	Description
23	94-7692	1	Fitting-Hose
23:1	237-80	1	O-Ring
24	94-2003	1	Transmission
25	281-10	1	Plug-Pipe
26	108323	1	Base-Filter
27	5991	1	Fitting-Filter
28	79-5270	1	Filter-Oil
29	321-5	2	Screw-HH
30	1535	3	Washer-Thrust
31	8571	1	Bearing-Needle
32	94-7566	1	Gear-Bevel
33	94-2010	1	Shaft-Input
34	32151-29	2	Ring-Ext. Snap
35	94-2011	1	Gear-Hi Lo
36	323-9	3	Screw-HH
37	323-8	2	Screw-HH
38	3253-3	2	Washer-Lock
39	95-4138	1	Fitting-Hydraulic
39:1	237-22	1	O-Ring
39:2	237-42	1	O-Ring
40	95-4135	1	Fitting-Hydraulic 45
40:1	237-42	1	O-Ring
40:2	237-22	1	O-Ring
41	94-7970	1	Tube-Hydraulic
42	94-7971	1	Tube-Hydraulic

Transmission Assembly – No. 94-2003



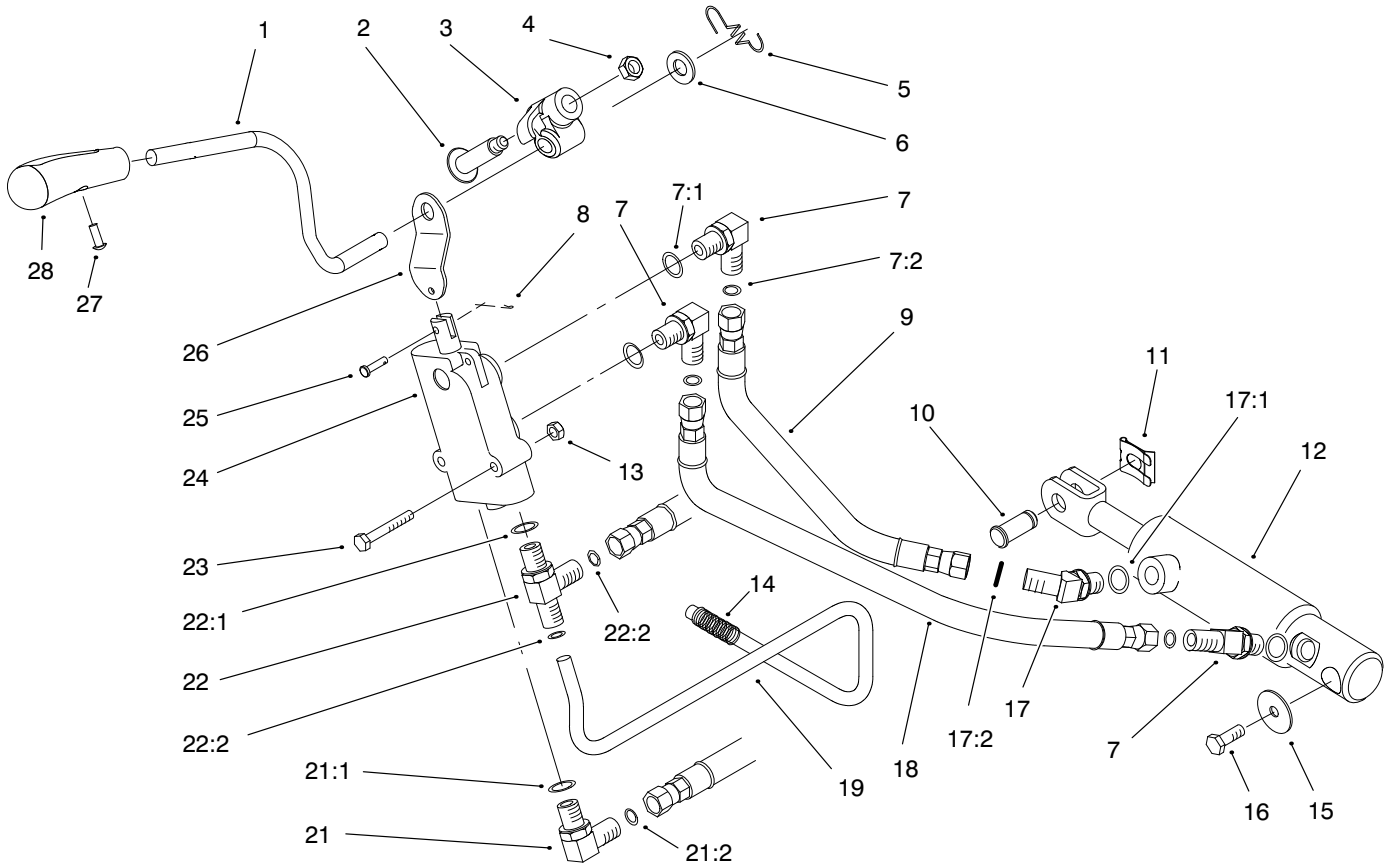


C-2742
Sheet No.:18

Hydro Lift Lower Assembly

Ref. No.	Part No.	Qty.	Description
1	323-7	5	Screw-HH
2	94-2263-03	1	Support-Deck Lift
3	3296-39	15	Nut-Lock
4	98-3582	1	Bellcrank & Bushing ASM
4:1	94-7574	2	Bushing-Flanged
5	3256-24	4	Washer-Flat
6	614672	2	Bolt-Shoulder
7	94-2279-03	1	Lift Arm ASM-LH
8	94-2411	2	Stop-Lift Adj.
9	3296-48	2	Nut-Lock
10	3256-28	2	Washer-Flat
11	32121-79	2	Roll Pin
12	94-2301	2	J Pin
13	95-4256	2	Spring-Compression
14	3256-26	2	Washer-Flat
15	3272-10	2	Pin-Cotter
16	94-2262	2	Rod-Lift
17	94-2277-03	1	Bar-Lift
18	94-2278-03	1	Lift Arm ASM-RH
19	3232-5	2	Screw-CARR
20	94-7600-03	1	Spacer-Strap
21	94-2260	2	Lift Sleeve ASM
22	94-2266-03	1	Support-Cylinder
23	323-18	4	Screw-HH

Ref. No.	Part No.	Qty.	Description
24	98-1617	1	Clamp-Tube
25	302-5	1	Fitting-Grease



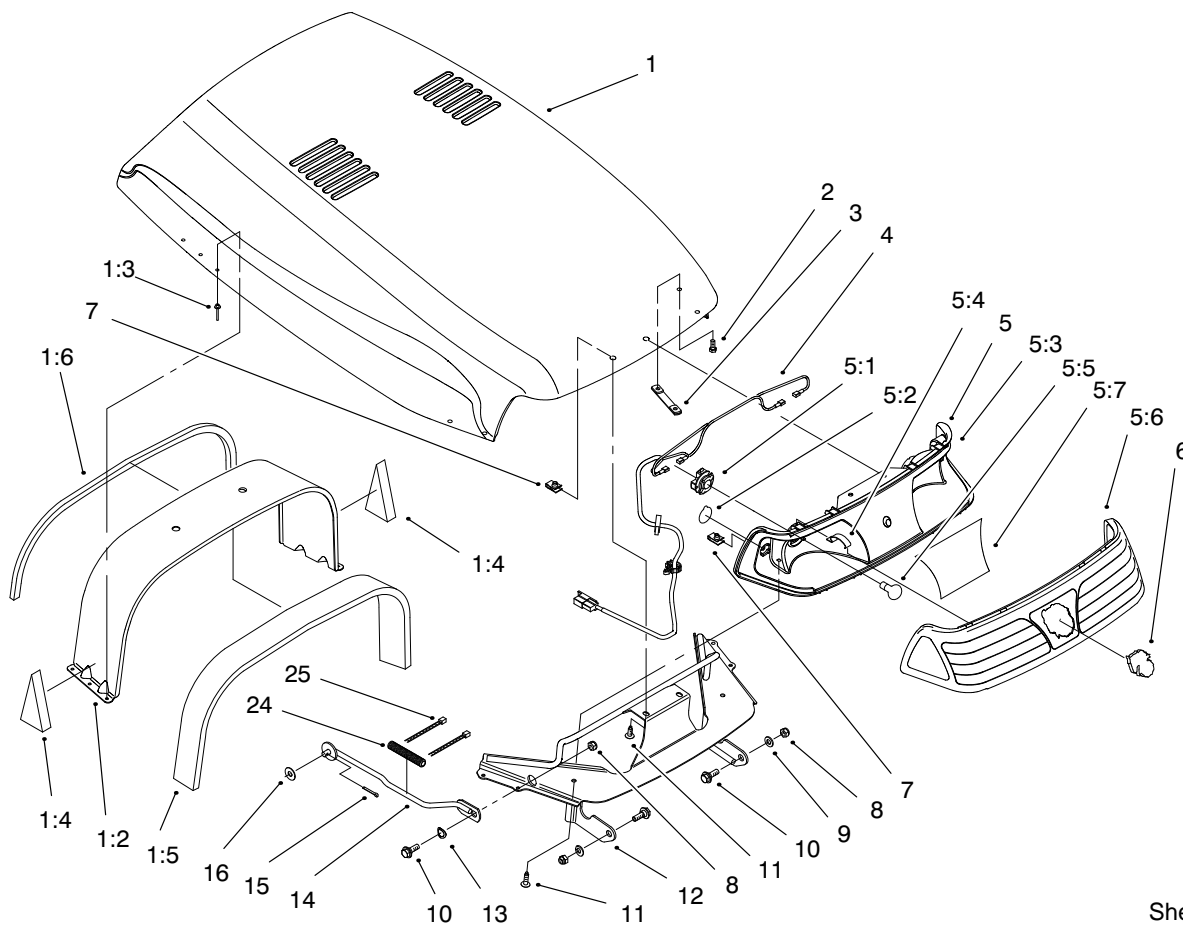
C-2728
Sheet No.:19

Hydro Lift Upper Assembly

Ref. No.	Part No.	Qty.	Description
1	94-7714	1	Handle-Lift
2	92-1099	1	Bolt-Shoulder
3	95-4168	1	Trunnion-Lift Lever
4	610358	1	Nut-Lock
5	95-4221	1	Spring-Ext. Lift
6	95-4235	1	Washer
7	95-4141	3	Fitting-Hydraulic 90 DEG
7:1	237-42	3	O-Ring
7:2	237-21	3	O-Ring
8	3272-1	1	Pin-Cotter
9	94-7945	1	Hose ASM
10	98-1639	1	Pin-Clevis
11	95-4064	1	Clip-Pin
12	94-2300	1	Lift Cylinder ASM
*12:1	95-4007	1	Seal Kit
13	3296-42	2	Nut-Lock
14	95-4258	2	Cover-Brace
15	3256-57	1	Washer-Flat
16	95-4245	1	Screw-Thread Locking
17	95-4136	1	Fitting-Hydraulic 45 DEG
17:1	237-42	1	O-Ring
17:2	237-21	1	O-Ring
18	94-7944	1	Hose ASM

Ref. No.	Part No.	Qty.	Description
19	94-7970	1	Tube-Hydraulic
21	95-4140	1	Fitting-Hydraulic 90 DEG.
21:1	237-42	1	O-Ring
21:2	237-22	1	O-Ring
22	95-4134	1	Fitting-Hydraulic Tee
22:1	237-42	1	O-Ring
22:2	237-22	2	O-Ring
23	321-10	2	Screw-HH
24	95-4019	1	Valve-Hydraulic
25	283-16	1	Pin-Clevis
26	98-1620	1	Link-Lift
27	95-4236	1	Tscrew-PPH
28	94-2100	1	Knob-Lift

* Not illustrated

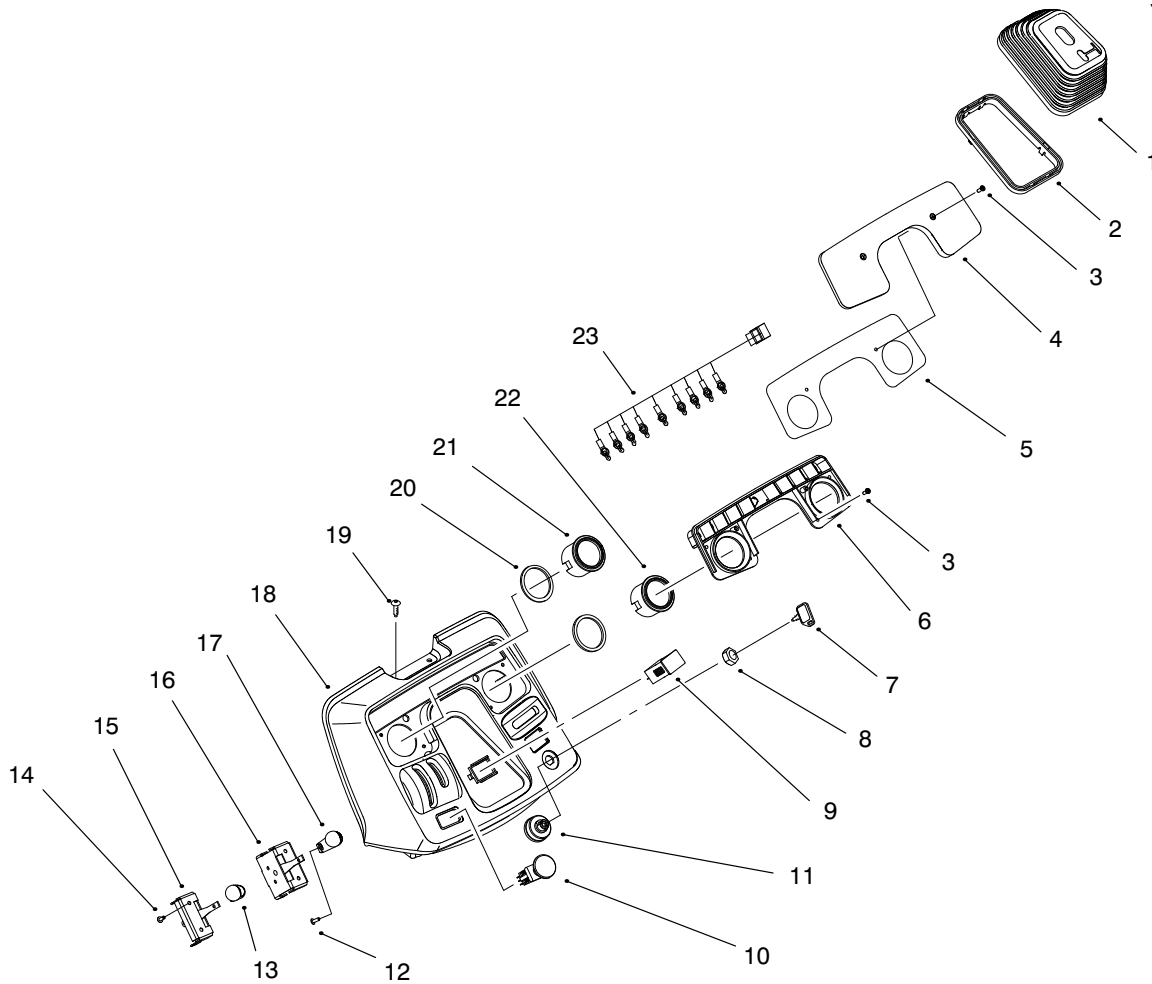


C-2722
Sheet No.:20

Hood & Headlight Assembly

Ref. No.	Part No.	Qty.	Description
1	98-7205	1	Hood ASM
1:2	98-7204	1	Rear Bulkhead ASM [Incl. Ref. #1:4 1:5 1:6]
1:3	3269-12	6	Rivet-Pop
1:4	95-4259	2	Foam-Lower Bulkhead
1:5	95-4078	1	Foam Seal-Rear Bulkhead
1:6	95-4233	1	Foam-Bulkhead/Hood
2	3274-31	4	Screw-HS
3	95-4197	2	Nut Plate
4	95-0691	1	Harness-Wire
5	95-4166	1	Headlight ASM
5:1	98-3591	2	Socket
5:2	98-1602	2	Decal-Sidelight
5:3	98-7810	1	Reflector ASM [Incl. Ref. #5:2 & 5:7]
5:4	95-4129	4	Clip
5:5	7228	2	Bulb-Light
5:6	94-2099	1	Lens-Headlight
5:7	98-3597	1	Decal-Headlight Reflector
6	95-4248	1	Logo-Headlight
7	107069	4	Nut-Panel
8	3296-29	3	Nut-Lock
9	3256-23	2	Washer-Flat

Ref. No.	Part No.	Qty.	Description
10	27-0410	3	Bolt-Shoulder
11	92-7020	4	Screw-TTH
12	95-3800-03	1	Front Bulkhead
13	98-1649	1	Washer-Spring
14	95-4070-03	1	Hood Support Rod
15	3272-10	1	Pin-Cotter
16	98-3051	1	Washer-Plastic
24	98-3595	1	Shield-Support Rod
25	614249	2	Tie Strap

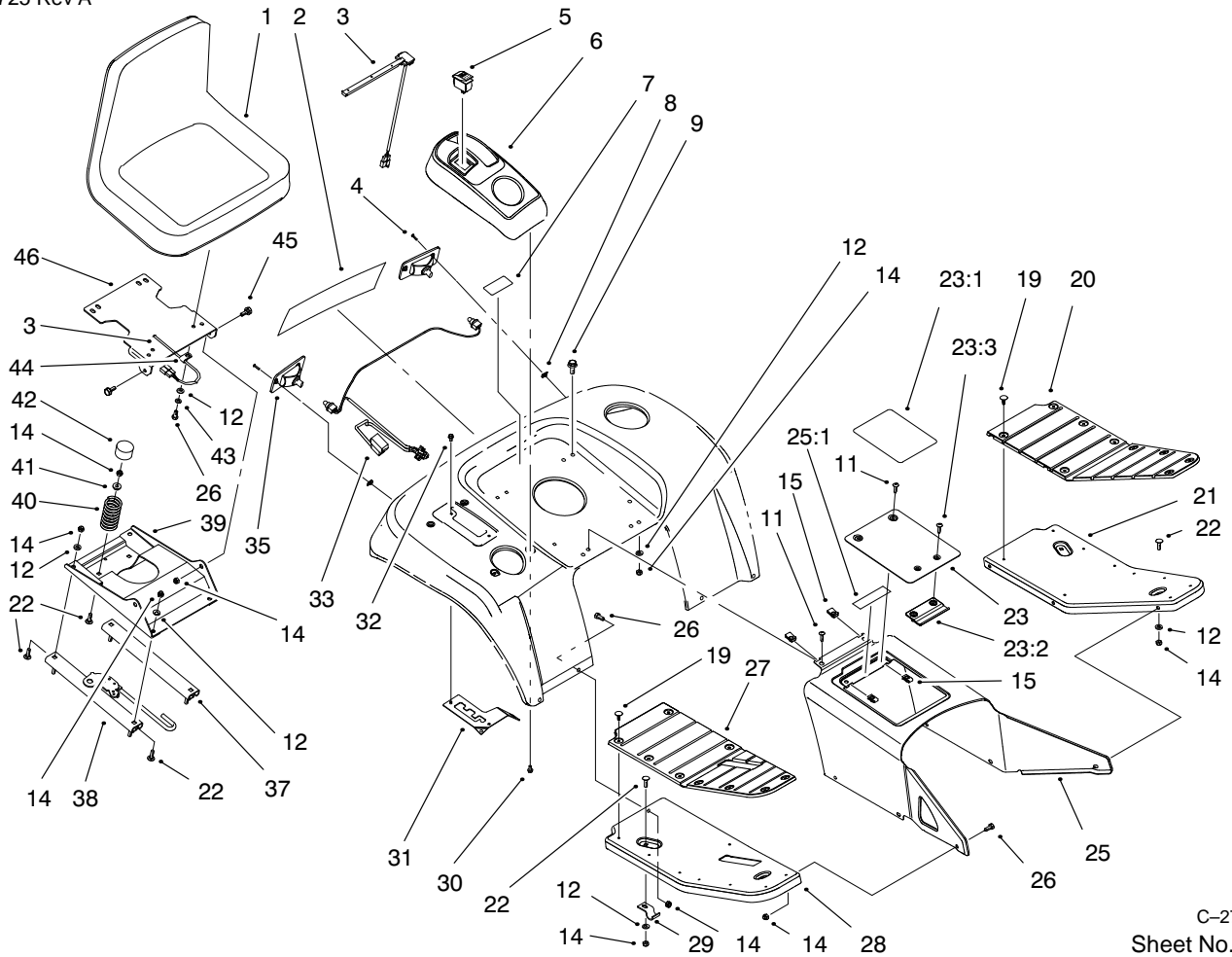


C-2720
Sheet No.:22

Dash Assembly

Ref. No.	Part No.	Qty.	Description
1	94-2102	1	Boot-Steering
2	95-3844	1	Retainer-Boot
3	95-4234	6	Screw-Pan Hd
4	95-3842	1	Lens-Dash
5	95-4072	1	Decal-Dash Lens
6	95-3843	1	Housing-Light
7	62-7770	1	Key-Ignition
8	700919	1	Nut
9	94-4208	1	Hourmeter
10	95-7489	1	Switch-PTO
11	92-6785	1	Switch-Ignition
12	95-4236	2	Tscrew-PPH
13	94-2121	1	Knob-Throttle
14	32144-32	4	Screw-Plastic
15	95-4036	1	Control Throttle ASM
16	95-4035	1	Control Choke ASM
17	94-2122	1	Knob-Choke
18	94-2101	1	Dash
19	92-7020	4	Screw-TTH
20	95-4238	2	Gasket-Foam
21	94-7616	1	Gauge-Oil Temperature
22	95-3830	1	Gauge-Fuel
23	94-7608	1	Harness-6 Light

Ref. No.	Part No.	Qty.	Description

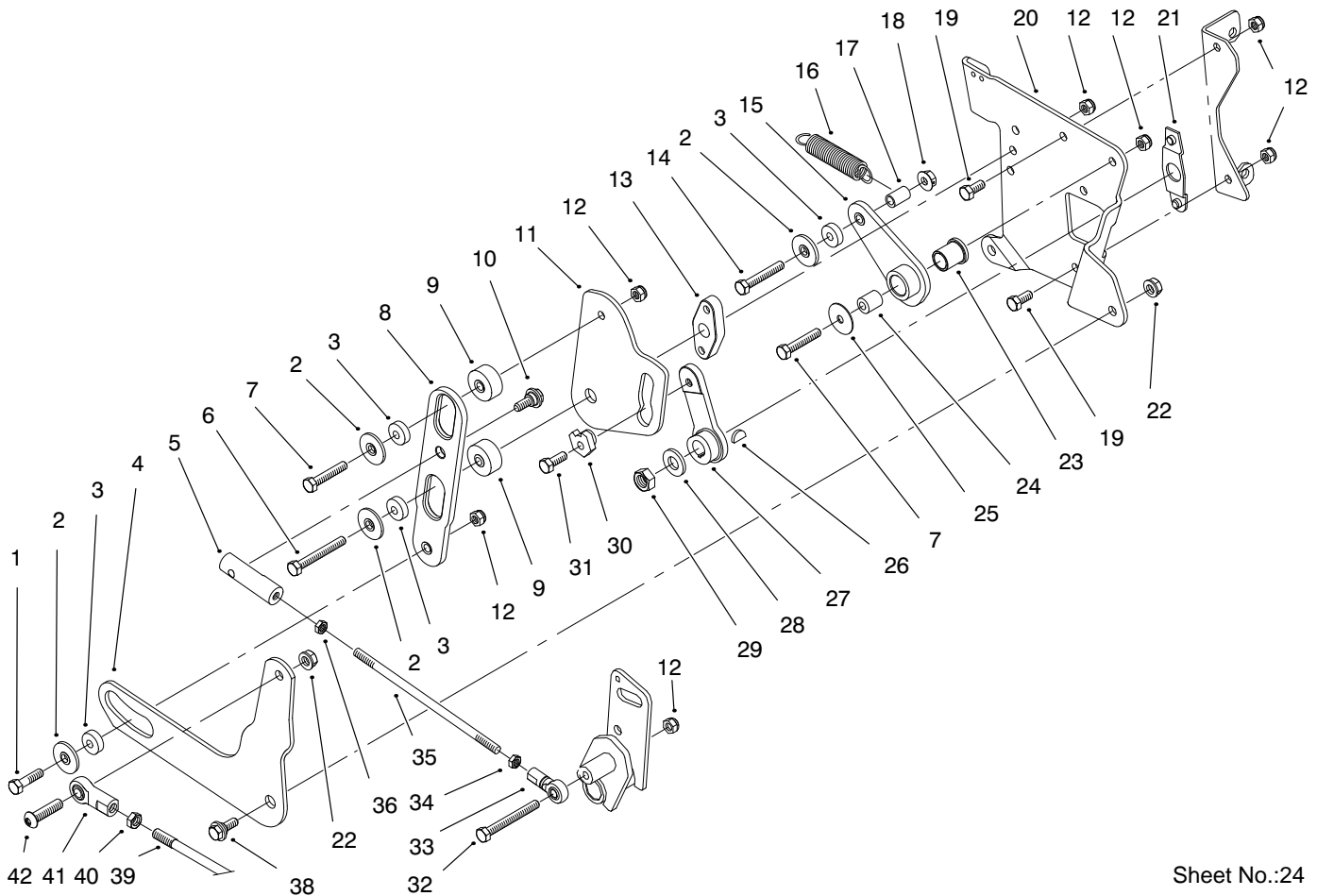


C-2736
Sheet No.:23

Fender, Footrest and Seat Assembly

Ref. No.	Part No.	Qty.	Description
1	94-3518	1	Seat V-811
2	95-4262	1	Decal-Fender
3	38-1420	1	Switch-Seat
4	3250-29	4	Screw
5	94-7602	1	Switch Cruise
6	94-2120	1	Pod-Control
7	76-1340	1	Decal-USA
8	95-4115	4	Nut-Speed
9	3234-29	4	Screw-HHF
11	92-7020	4	Screw-TTH
12	3256-23	17	Washer-Flat
14	3296-29	27	Nut-Lock
15	107069	4	Nut-Panel
16	80-8760	1	Decal-Danger
19	3290-479	18	Fastener-Panel
20	94-2096	1	Pad-Footerest
21	94-2090-01	1	Footrest
22	3230-16	10	Screw-CARR
23	98-1621	1	Tunnel Cover ASM
23:1	95-4263	1	Decal-Danger
23:2	95-4107	1	Retainer-Cover
23:4	94-4496	2	Screw
25	98-5025-01	1	Tunnel ASM
25:1	80-8760	1	Decal-Danger
26	322-3	14	Screw-HH
27	94-2095	1	Pad-Footerest

Ref. No.	Part No.	Qty.	Description
28	94-2089-01	1	Footrest
29	95-3858	2	Bracket-Footerest
30	32144-20	4	Screw
31	98-8711	1	Gate-Hi Lo Shift
32	32144-4	2	Screw-TAP
33	94-7611	1	Harness-Rear
35	94-2124	2	Lamp-Taillight
37	94-2112	1	Slide-Seat
38	94-2177	1	Seat Slide-Latch
39	94-2107-03	1	Base-Seat
40	94-2106-03	2	Spring-Compression
41	105503	2	Bushing
42	95-4242	2	Cap-Seat Spring
43	3253-4	4	Washer-Lock
44	98-2390	1	Clamp-R
45	37-8771	2	Bolt-Shoulder
46	94-2111-03	1	Mount-Seat

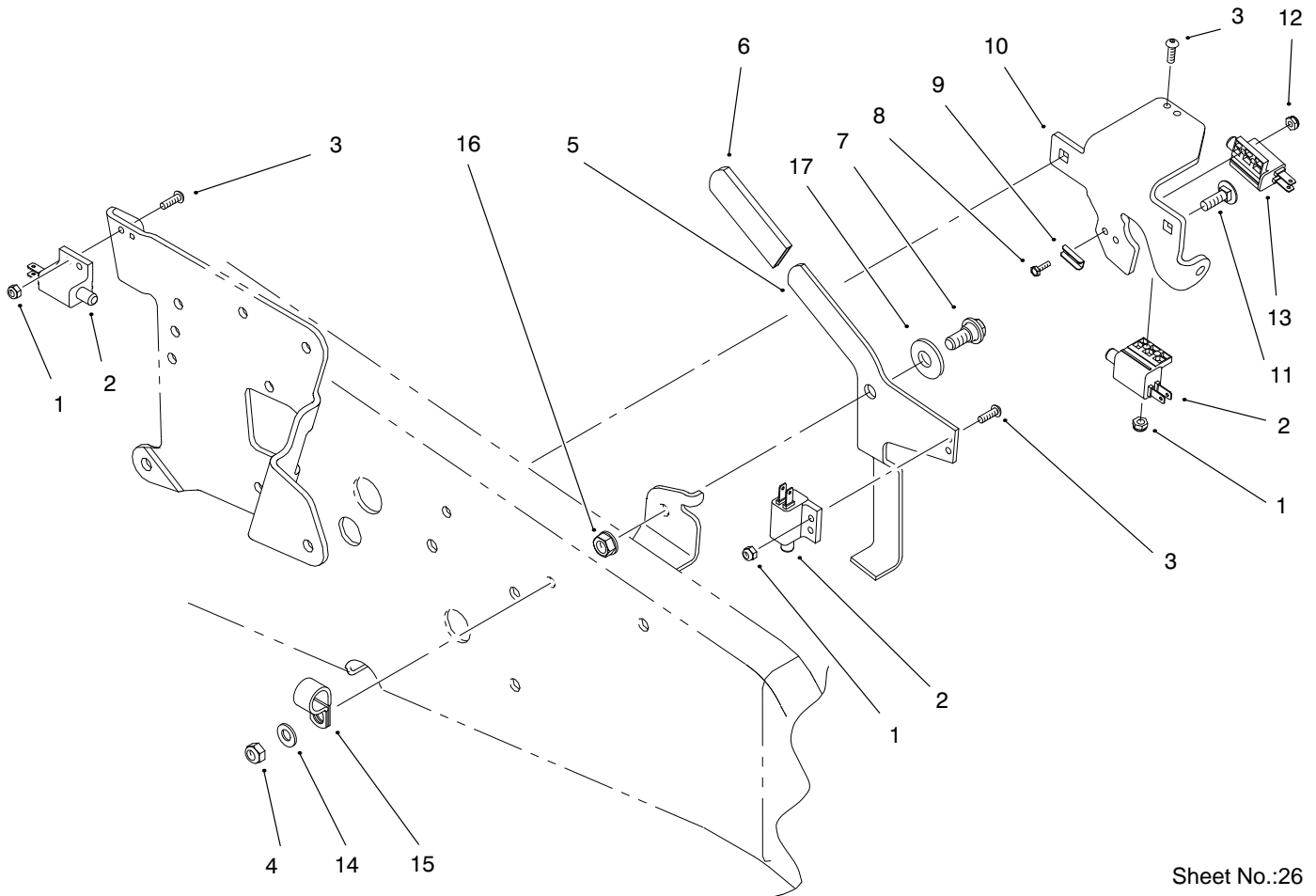


Sheet No.:24

Smart Turn Rear Assembly

Ref. No.	Part No.	Qty.	Description
1	322-6	1	Screw-HH
2	94-2313	4	Retainer-Bearing
3	95-4185	4	Bearing-Ball
4	95-3801-03	1	Slider Lift
5	94-7637	1	Rod End RH
6	322-12	1	Screw HH
7	322-9	2	Screw-HH
8	94-2144	1	Slider-Speed Control
9	94-2169	2	Standoff-Cam
10	94-7817	1	Bolt-Shoulder
11	94-2145	1	Plate-Cam
12	3296-29	7	Nut-Lock
13	94-2168	1	Standoff-Slider
14	322-10	1	Screw-HH
15	94-7586	1	Arm-Return To Neutral
16	63-1590	1	Spring-Extension
17	94-2309	1	Standoff-Spring
18	32128-30	1	Nut-Flange
19	322-3	2	Screw-HH
20	94-2149-03	1	Plate-Control
21	94-7814	1	Locater-Control Plate
22	108881	2	Nut-Hex
23	94-7913	1	Bushing-Flange
24	94-7564	1	Spacer
25	3256-57	1	Washer-Flat

Ref. No.	Part No.	Qty.	Description
26	3257-24	1	Key-Woodruff
27	94-7816	1	Arm-Speed Control
28	3256-26	1	Washer-Flat
29	3296-45	1	Nut
30	94-2468	1	Cam-Eccentric
31	95-4245	1	Screw-Thread Locking
32	322-13	1	Screw-HH
33	94-7571	1	Rod End LH
34	3220-20	1	Nut-Hex Jam
35	94-2497	1	Rod-Slider To Pivot
36	3220-2	1	Nut-Jam
38	94-7582	1	Bolt-Shoulder
39	94-7500	1	Rod-Lift Lever
40	3220-3	1	Nut-Hex Jam
41	92-7008	1	Rod End
42	95-3857	1	Screw-Button Head

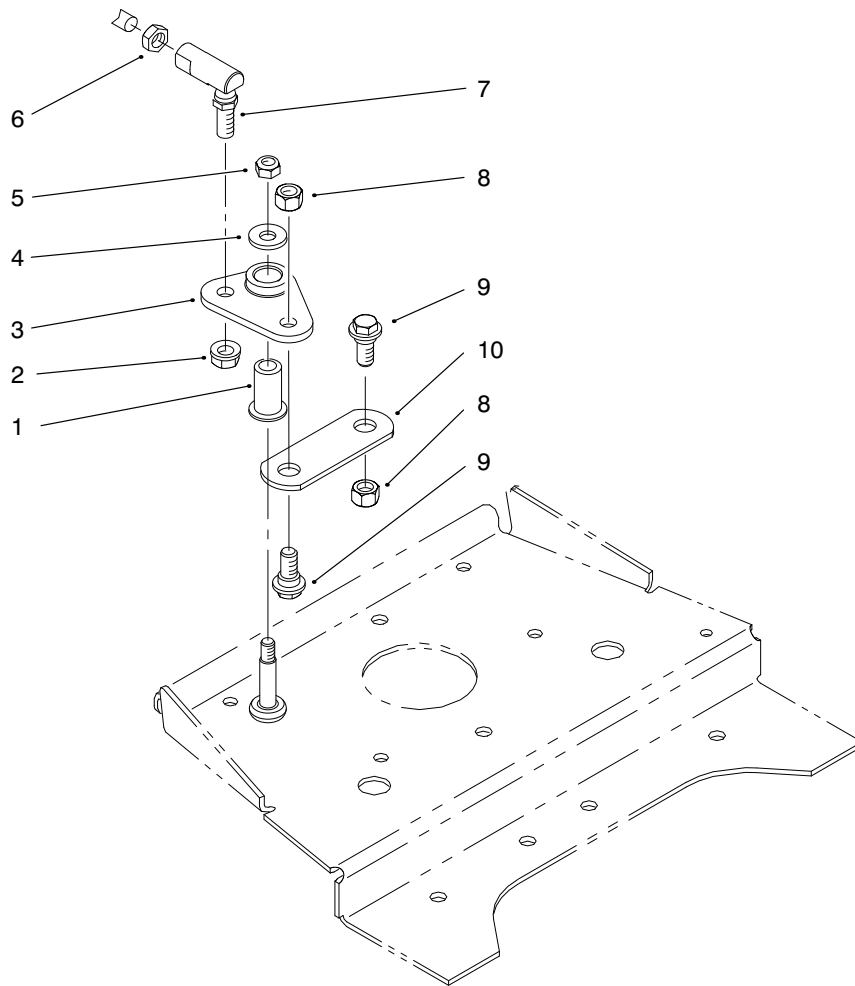


Sheet No.:26

Upper Parking Brake Assembly

Ref. No.	Part No.	Qty.	Description
1	3296-2	6	Nut Lock
2	65-7410	3	Switch-Single Pole
3	3274-14	6	Screw-HSH
4	3296-29	2	Nut-Lock
5	94-2157-03	1	Latch-Parking Brake
6	102597	1	Grip
7	94-7582	1	Bolt-Shoulder
8	3290-392	2	Screw-HH
9	94-7905	1	Retainer-Screw
10	94-7562-03	1	Bracket-Switch
11	3230-16	2	Screw-CARR
12	3296-1	2	Locknut
13	95-1653	1	Switch-Single Pole
14	3256-23	1	Washer-Flat
15	98-2358	1	Clamp-R
16	108881	1	Nut-Hex
17	98-3087	1	Washer-Power Steering

Ref. No.	Part No.	Qty.	Description

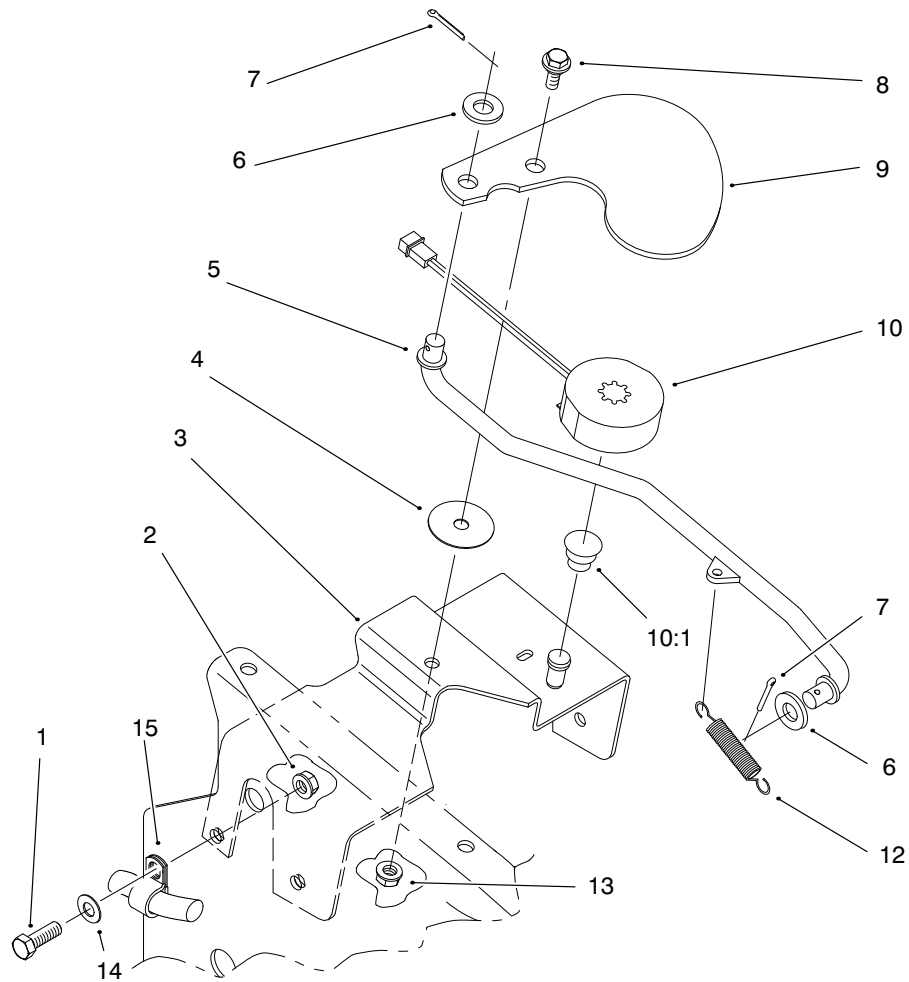


Sheet No.:28

Smart Turn Front Assembly

Ref. No.	Part No.	Qty.	Description
1	94-7919	1	Bushing
2	3296-6	1	Nut-Lock
3	94-7579	1	Lever-Slow Down
4	98-3499	1	Washer-Flat
5	3296-29	1	Nut-Lock
6	3220-16	1	Nut-HJ
7	94-7573	1	Tie Rod End LH
8	108881	2	Nut-Hex
9	94-7582	2	Bolt-Shoulder
10	94-2409	1	Link-Slow Down

Ref. No.	Part No.	Qty.	Description

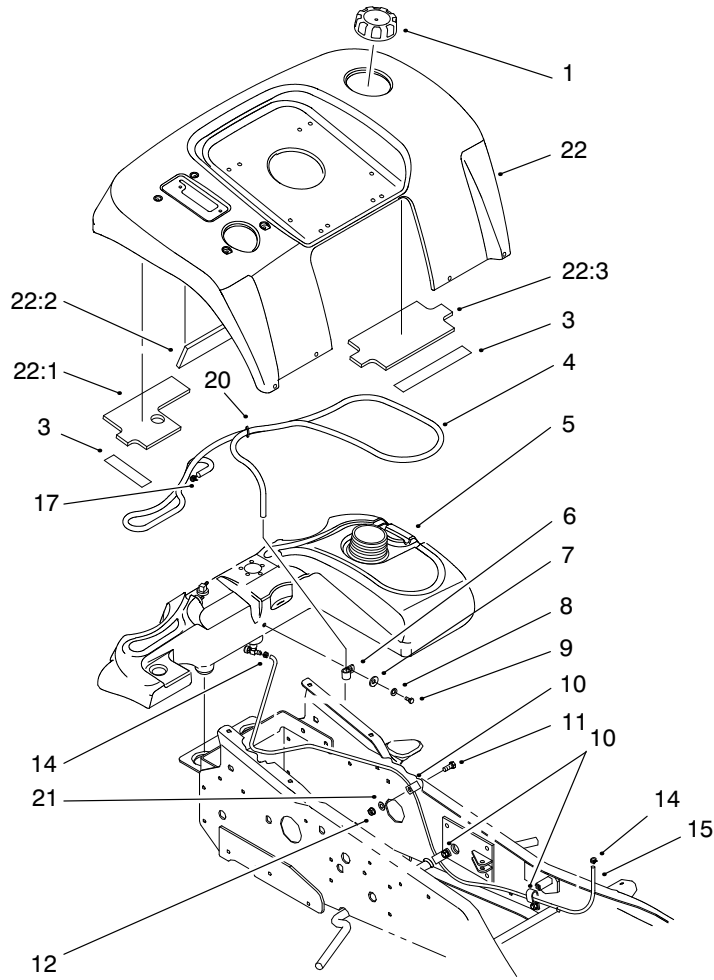


Sheet No.:30

Cruise Control Assembly

Ref. No.	Part No.	Qty.	Description
1	323-6	4	Screw-HH
2	3296-39	4	Nut-Lock
3	94-2494-03	1	Bracket-Cruise Control
4	94-7575	1	Spacer-Cruise
5	94-7980	1	Rod-Cruise Control
6	3256-26	2	Washer-Flat
7	3272-10	2	Pin-Cotter
8	94-7582	1	Bolt-Shoulder
9	94-2158	1	Plate-Magnet
10	93-4366	1	Magnet ASM
10:1	93-6601	1	Spring
12	66-4160	1	Spring
13	108881	1	Nut-Hex
14	3256-24	2	Washer-Flat
15	98-2358	2	Clamp-R

Ref. No.	Part No.	Qty.	Description



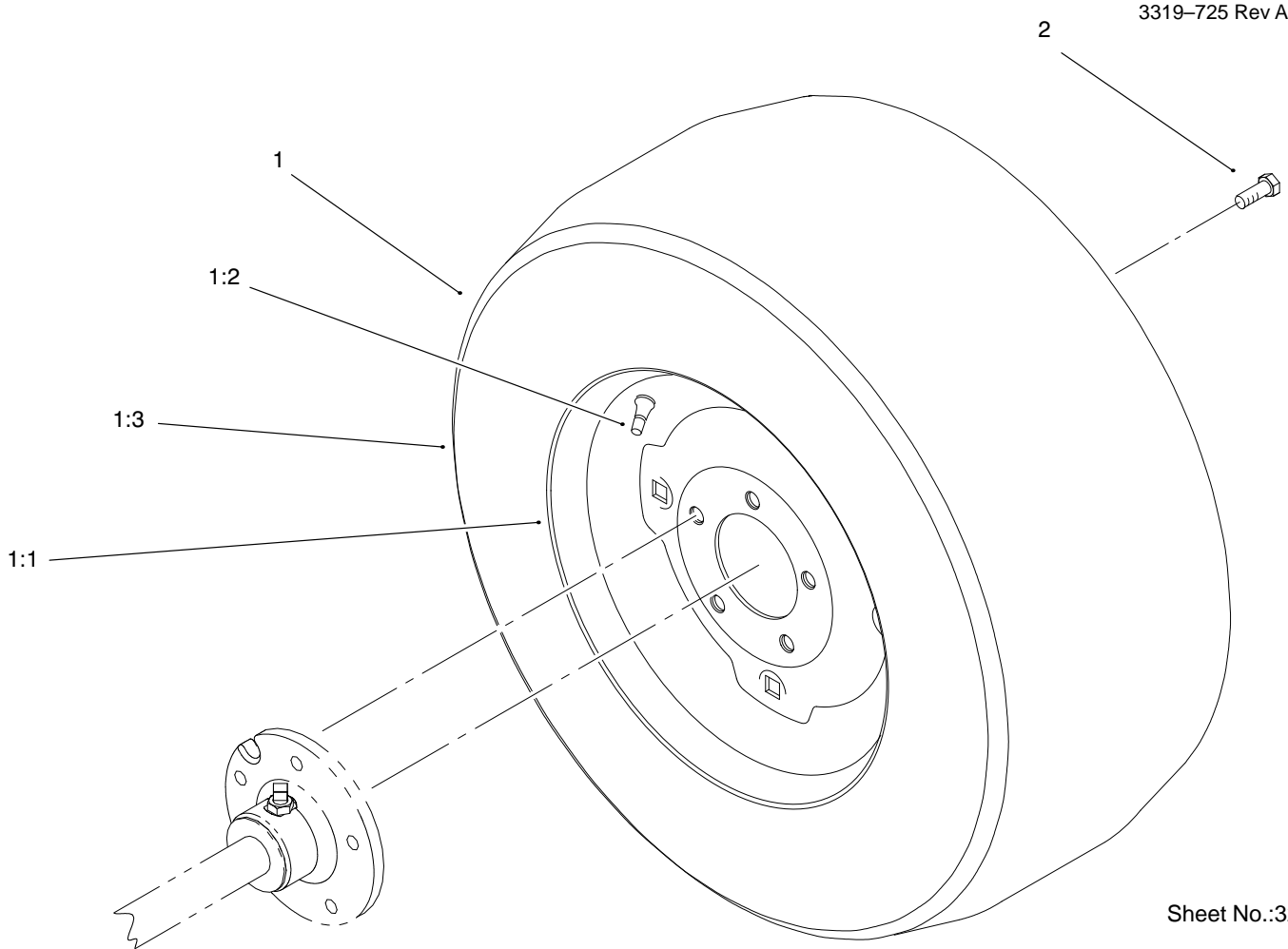
C-2738
Sheet No.:31

Fender and Fuel System Assembly

Ref. No.	Part No.	Qty.	Description
1	95-4192	1	Gas Cap ASM-Unleaded
3		1	Tape
4	95-4186	1	Hose-Vent
5	95-3809	1	Tank-Gas
*5:1	98-3050	1	Fitting Orifice
*5:2	104047	1	Bushing
*5:3	99-3716	1	Fitting-Fuel Shut Off
*5:4	2412-36	1	Clamp
*5:5	95-3971	1	Sender-Fuel level
*5:6	99-2326	1	Gasket-Fuel Sender
*5:7	3250-31	5	Screw
*5:8	3253-17	5	Lockwasher
*5:9	95-3968	1	Fitting
*5:10	98-7390	1	Gage
6	2412-94	1	R-Clamp
7	3256-22	1	Washer-Flat
8	3253-3	1	Washer-Lock
9	321-3	1	Screw-HH
10	98-1616	3	Clamp-Tube
11	323-6	1	Screw-HH
12	3296-39	1	Nut-Lock
14	95-4271	2	Clamp-Hose
15	95-4272	1	Hose-Fuel
17	94-8189	1	Clamp-Hose
20	614249	1	Tie Strap

Ref. No.	Part No.	Qty.	Description
21	3256-24	1	Washer-Flat
22	98-7208	1	Rear Body ASM
22:1	95-4159	1	Foam-Tank LH
22:2	95-4158	1	Foam-Tank RH
22:3	95-4157	1	Foam-Tank Center

* Not Illustrated



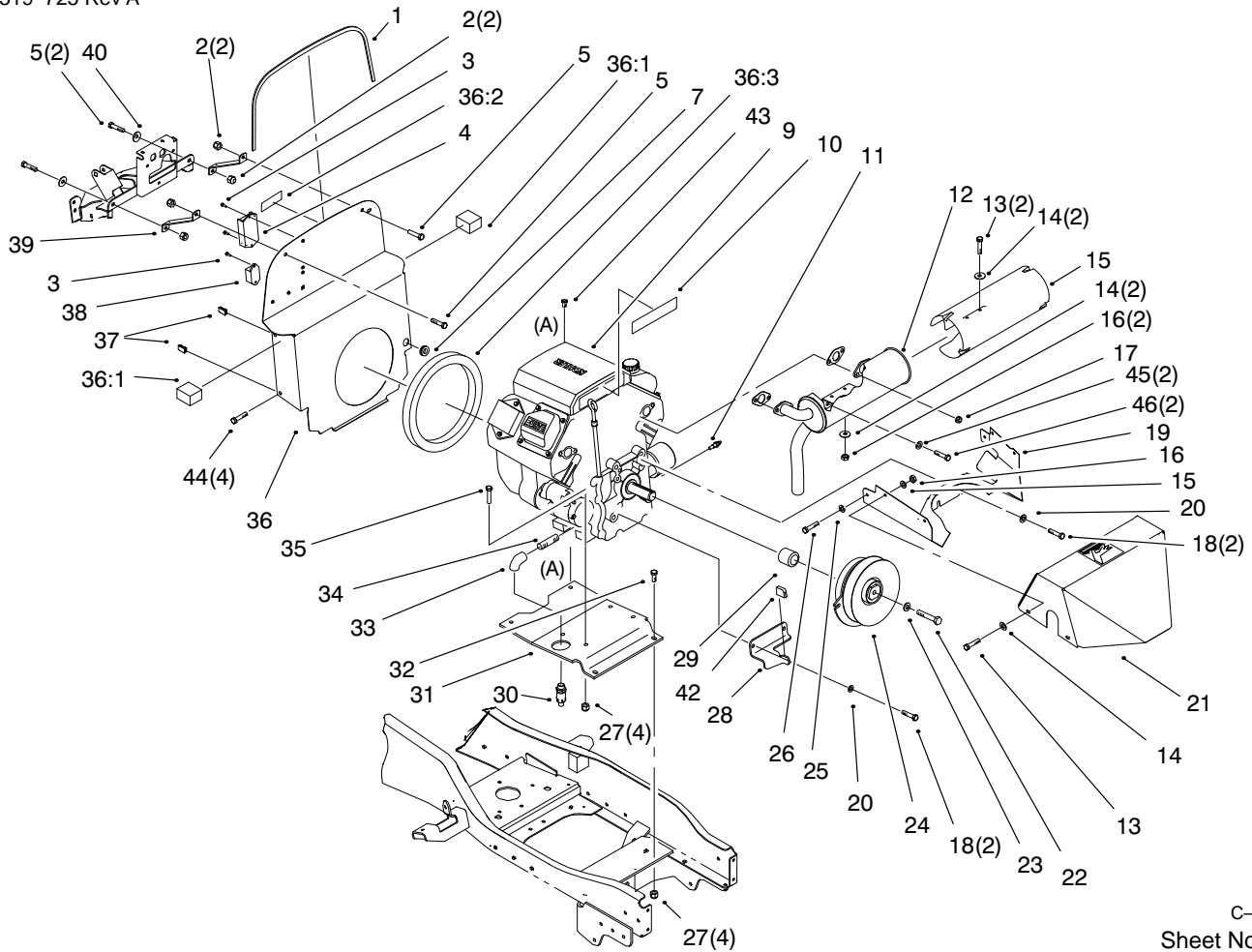
Sheet No.:32

Wheel Assembly

Ref. No.	Part No.	Qty.	Description
1	94-2194	2	Rear Wheel & Tire ASM
1:1	94-2193	2	Tire
1:2	5108	2	Valve-Tire Tubeless
1:3	110680	2	Wheel
2	83-2720	10	Bolt-Lug
*	7007	2	Tube-Inner

Ref. No.	Part No.	Qty.	Description

* Not Illustrated



C-2739

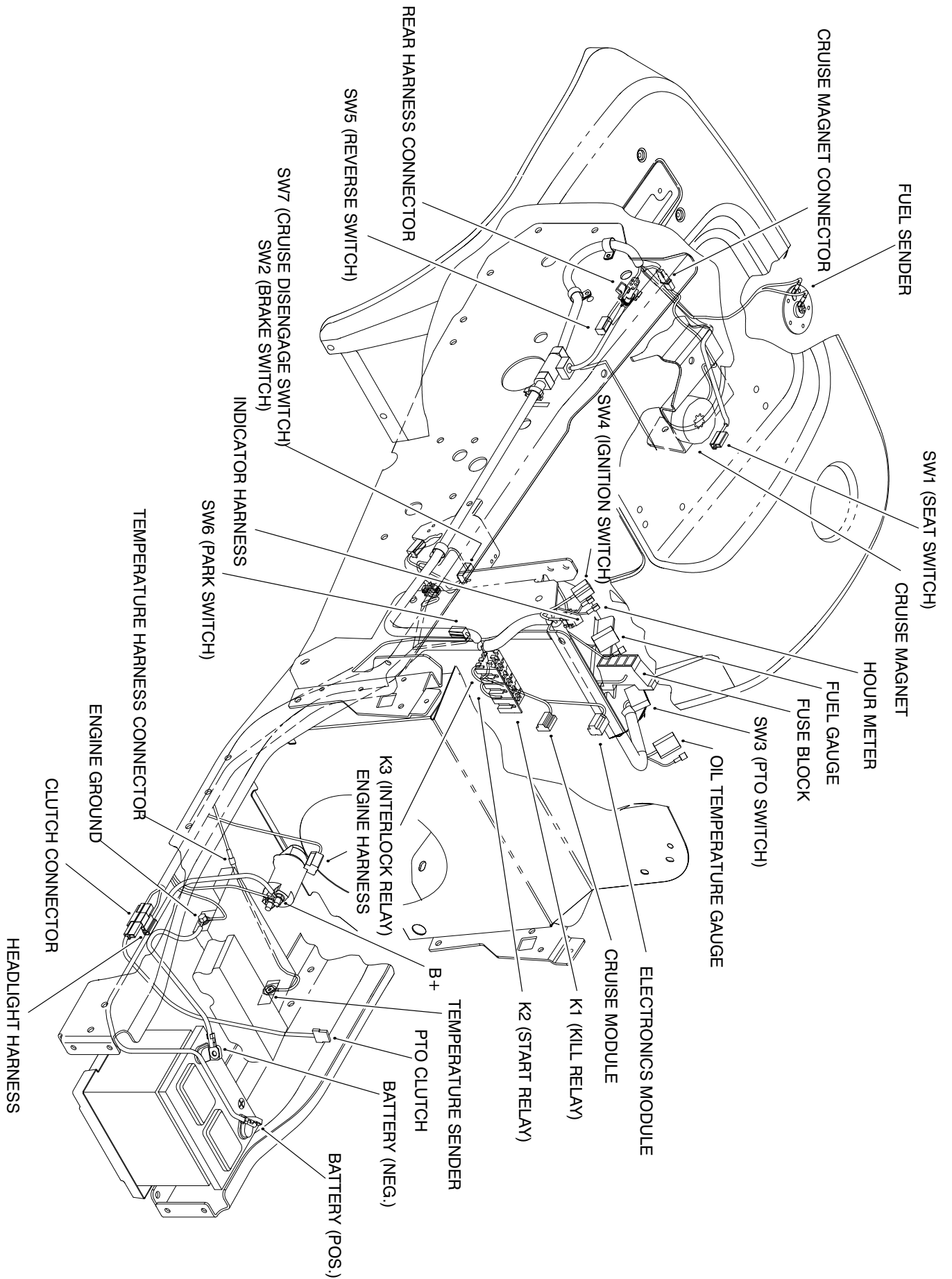
Sheet No.:33

Air Cooled Engine Assembly

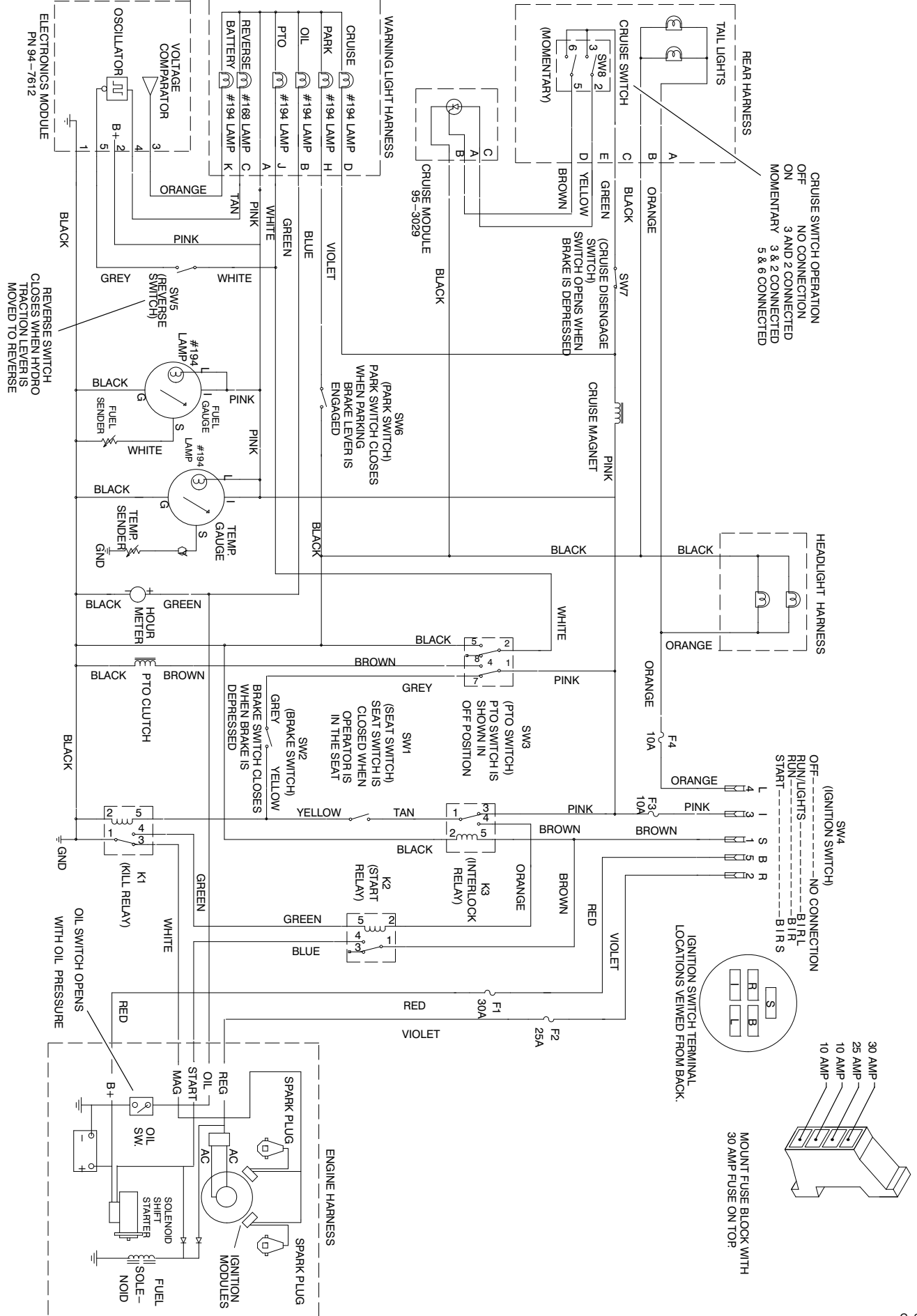
Ref. No.	Part No.	Qty.	Description
1	95-4125	1	Trim
2	3296-29	4	Nut-Lock
3	12-5450	3	Screw-Thread Forming
4	94-7612	1	Module-Kohler
5	322-3	4	Screw-HH
7	240-9	1	Grommet
9		1	Engine
10	98-3581	1	Decal-22hp Engine
11	94-7619	1	Sender-Oil Temp.
12	94-7558	1	Muffler-Kohler
13	321-3	6	Screw-HH
14	3256-22	6	Washer-Flat
15	94-7560	1	Reflector-Heat (Kohler)
16	32152-4	6	Locknut
17	92-6780	4	Nut-HHF
18	323-6	4	Screw-HH
19	94-7522-03	1	Shroud-Muffler
20	3253-5	6	Washer-Lock
21	94-7524-03	1	Shroud-Muffler
22	94-7973	1	Screw-Cap
23	3256-25	1	Washer-Flat
24	94-2190	1	Clutch-PTO
25	3253-3	2	Washer-Lock
26	33113-008	2	Screw-HH

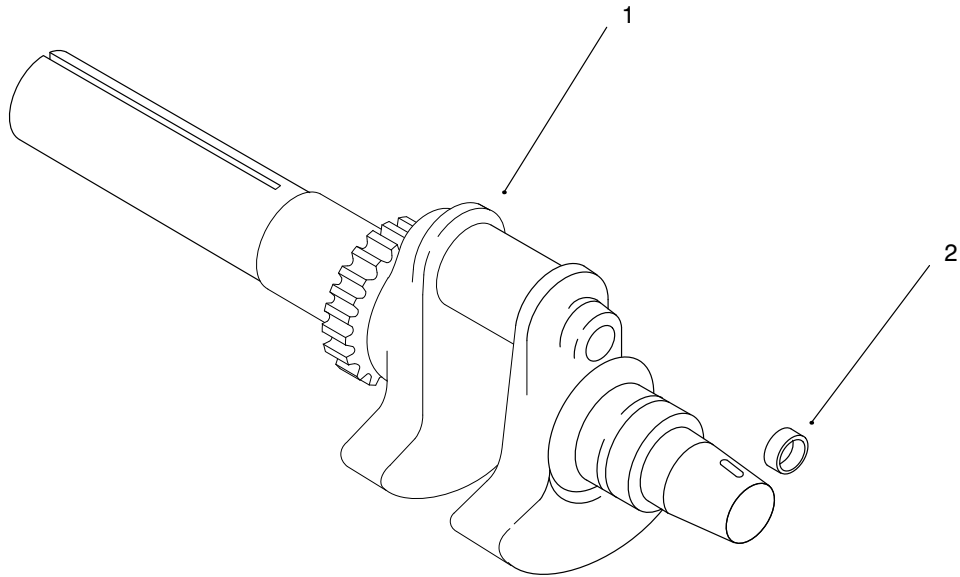
Ref. No.	Part No.	Qty.	Description
27	3296-39	8	Nut-Lock
28	94-2356-03	1	Clutch-Stop
29	94-2068	1	Spacer-Clutch
30	92-6877	1	Valve-Oil Drain
31	94-2199-03	1	Plate-Engine
32	323-7	3	Screw-HH
33	2811-16	1	Elbow-90°
34	98-7200	1	Nipple-Pipe
35	323-9	4	Screw-HH
36	98-5060-03	1	Bulkhead ASM
36:1	98-3086	2	Foam-Kohler
36:2	98-5012	1	Decal-Warning
36:3	95-4104	1	Foam Seal
37	107069	4	Nut-Panel
38	95-3029	1	Cruise Module
39	95-4117-03	2	Bracket-Bulkhead
40	3256-24	2	Washer-Flat
42	98-5023	1	Bumper
43	32144-109	1	Screw-Taptite
44	322-7	4	Screw-HH
45	3253-4	2	Washer-Lock
46	33104-020	2	Screw-HHF

Wiring Harness Routing



Electrical Schematic Diagram



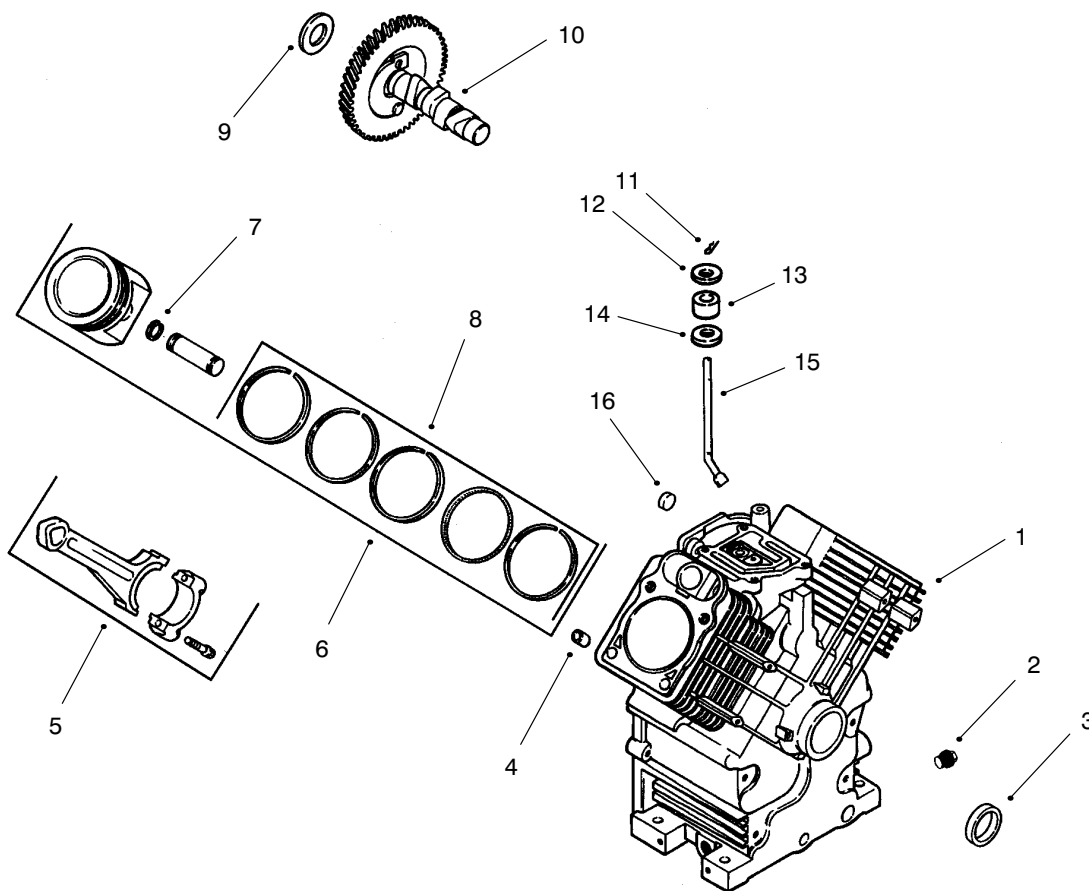


GROUP 1 – CRANKSHAFT

Ref. No.	Part No.	Description	No. Used
1	24 014 14	Crankshaft (Includes 2)	1
2	52 139 09	Plug, cup	1

Ref. No.	Part No.	Description	No. Used

Obtain Parts From Your Local Kohler Dealer
 Kohler Engine #CH22S-PS-66545

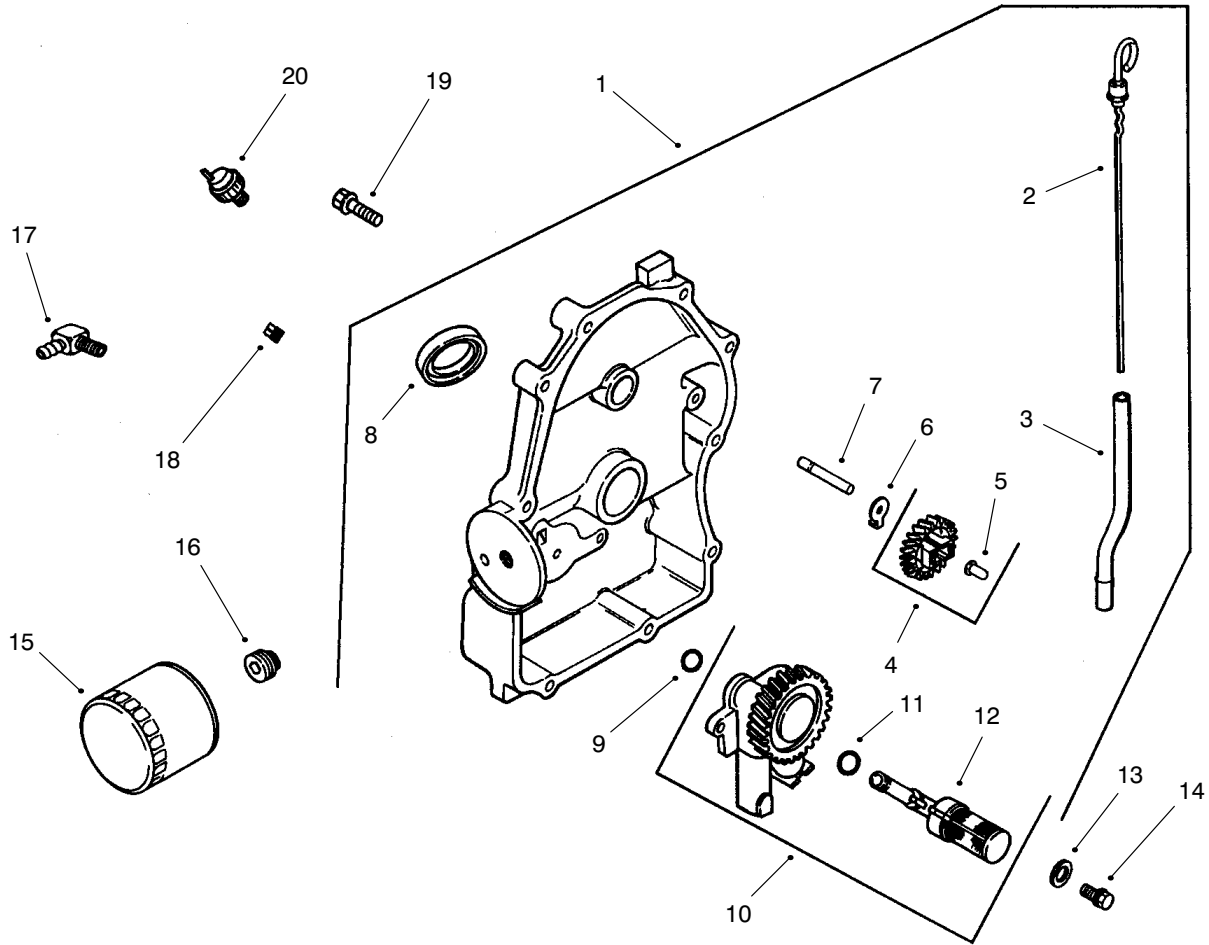


GROUP 2 – CRANKSHAFT

Ref. No.	Part No.	Description	No. Used
1	X-75-10	Cylinder Block (Use Miniblock 24 782 01)	1
2	24 032 01	Plug, hex. head	2
3	12 380 17	Seal, oil front	1
4		Pin, dowel locating	6
5	24 067 09	Connecting Rod (Std.)	2
	24 067 10	Connecting Rod (.25)	2
6	24 874 01	Piston w/Ring Set (Std.)	2
	24 874 02	Piston w/Ring Set (.25)	2
	24 874 03	Piston w/Ring Set (.50)	2
7	24 018 01	Retainer, piston pin	4
8	24 108 01	Ring Set (Std.)	2
	24 108 02	Ring Set (.25)	2
	24 108 03	Ring Set (.50)	2

Ref. No.	Part No.	Description	No. Used
9	12 422 09	Shim, camshaft – red	A/R
	12 422 13	Shim, camshaft – black	A/R
	12 422 07	Shim, camshaft – white	A/R
	12 422 08	Shim, camshaft – blue	A/R
	12 422 10	Shim, camshaft – yellow	A/R
	12 422 11	Shim, camshaft – green	A/R
	12 422 12	Shim, camshaft – gray	A/R
10	24 012 05	Camshaft	1
11	12 380 04	Pin, hitch	1
12	M-0631005	Washer, flat	1
13	12 032 01	Seal, governor cross shaft	1
14	X-25-102	Washer, plain	1
15	24 144 01	Shaft, governor cross	1
16	52 139 09	Plug, cup	1

Obtain Parts From Your Local Kohler Dealer
 Kohler Engine #CH22S-PS-66545

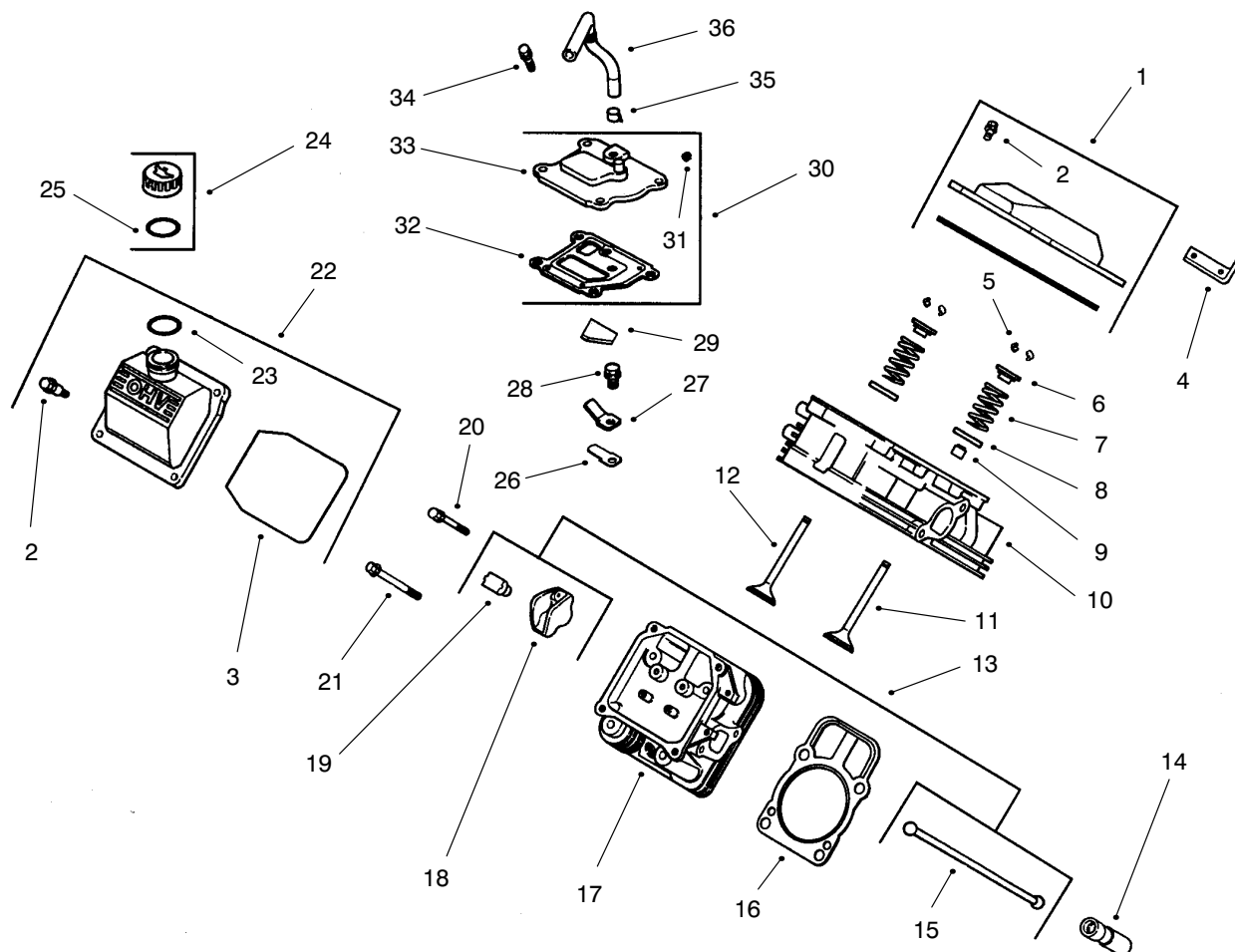


GROUP 3 – OIL PAN/LUBRICATION

Ref. No.	Part No.	Description	No. Used
1	54 009 01	Plate, closure assembly (Includes 2-12)	1
2	24 038 06	Dipstick	1
3	24 123 08	Tube, dipstick	1
4	24 043 12	Kit, governor gear (Includes 5)	1
5	12 380 01	Pin, governor regulating	1
6	52 448 02	Tab, locking	1
7	12 144 02	Shaft, governor gear	1
8	52 032 08	Seal, oil (PTO end)	1
9	24 153 08	O-Ring	1
10	24 393 10	Oil pump assembly (Includes 11,12)	1
11	24 153 01	O-Ring, oil pick-up	1

Ref. No.	Part No.	Description	No. Used
12	24 381 04	Pick-up, oil	1
13	M-0631005	Washer, plain 6 mm	2
14	M-0645025	Screw, hex. flange	2
15	12 050 01	Filter, oil	1
16	24 136 01	Nipple, oil filter	1
17	25 155 02	Connector	1
18	X-75-23	Plug, pipe	1
19	24 086 16	Screw, hex. flange	10
20	52 099 06	Switch, pressure	1
		Not Illustrated	
	25 113 05	Decal, oil sentry	1

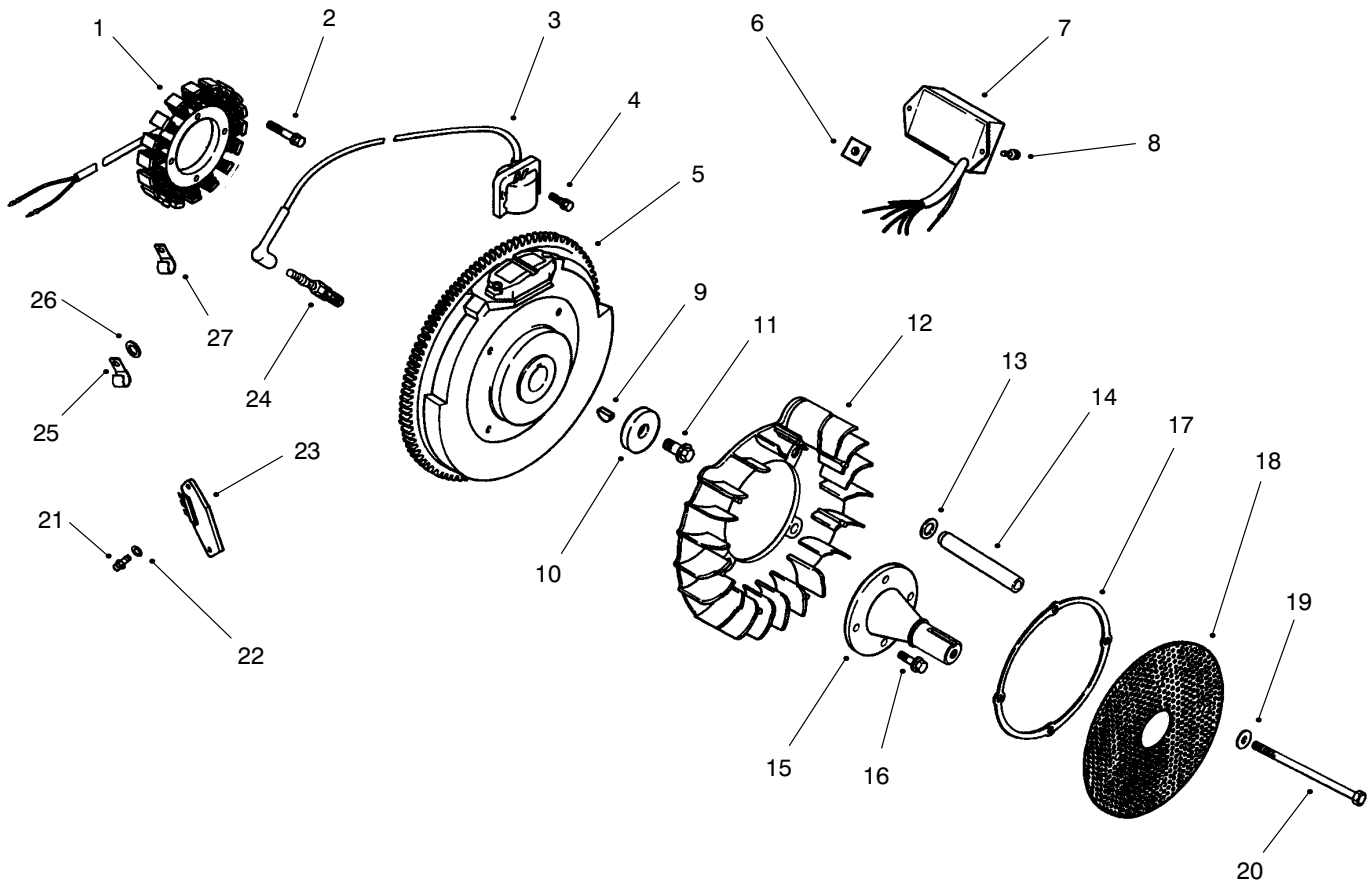
Obtain Parts From Your Local Kohler Dealer
Kohler Engine #CH22S-PS-66545



GROUP 4 – HEAD/VALVE/BREATHER

Ref. No.	Part No.	Description	No. Used	Ref. No.	Part No.	Description	No. Used
1	24 755 74	Kit, valve cover – plain (Includes 2–3)	1	18	25 186 01	Arm, rocker	4
2	24 086 32	Screw, shoulder	4	19	24 599 01	Pivot, rocker arm	4
3	24 153 16	O–Ring, valve cover	1	20	M–0640034	Screw, hex. flange	4
4	24 445 01	Strap, lifting	1	21	12 086 16	Screw, hex. flange	8
5	12 755 03	Kit, retainer	4	22	24 755 75	Kit, valve cover – oil fill (Includes 2,3,23)	1
6	12 173 01	Cap, valve spring	4	23	24 153 09	O–Ring	1
7	24 089 02	Spring, valve	4	24	25 755 13	Kit, oil fill cap (Includes 25)	1
8	235011	Retainer, spring	4	25	12 153 03	O–Ring, oil fill cap	1
9	24 032 05	Seal, valve stem	2	26	24 402 03	Reed, breather	1
10	24 318 09	Head assembly, #1 cylinder	1	27	12 018 01	Retainer, breather reed	1
11	24 017 01	Valve, intake (Std.)	2	28	M–0545010	Screw, hex. flange	1
	24 017 02	Valve, intake (.25)	2	29	24 050 01	Filter, breather	1
12	24 016 01	Valve, exhaust (Std.)	2	30	24 033 01	Kit, breather (Includes 31–33)	1
	24 016 02	Valve, exhaust (.25)	2	31	X–75–23	Plug, allen head pipe	1
13	24 755 66	Kit, valve train (Includes 15,18,19)	1	32	24 041 23	Gasket, breather	1
14	12 351 02	Lifter, valve	4	33	24 096 02	Cover, breather	1
15	24 411 05	Rod, push	4	34	M–0645020	Screw, hex. flange	4
16	24 041 08	Gasket, cylinder head	2	35	X–426–9	Clamp, breather	1
17	24 318 10	Head assembly, #2 cylinder	1	36	24 326 06	Hose, breather	1

Obtain Parts From Your Local Kohler Dealer
Kohler Engine #CH22S–PS–66545

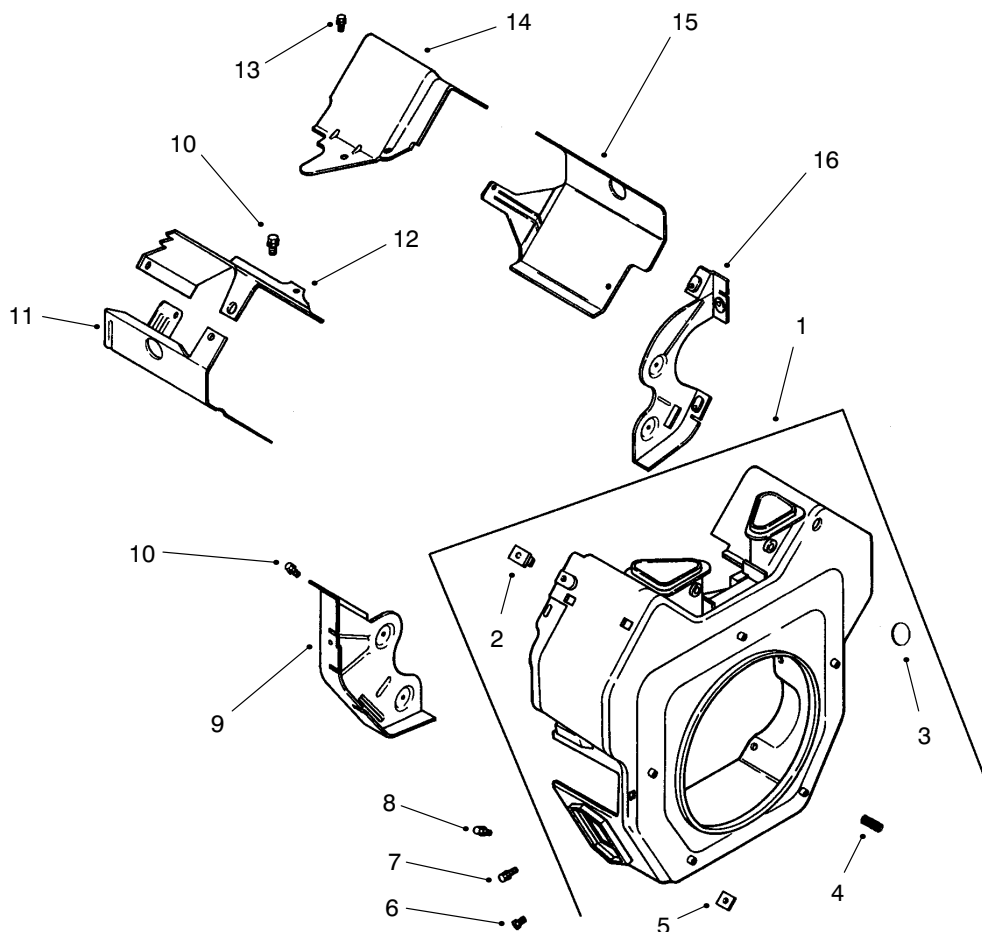


GROUP 5 – IGNITION/ELECTRICAL

Ref. No.	Part No.	Description	No. Used
1	54 755 09	Kit, 15 amp stator (Incl. 24 126 71 bracket)	1
2	M-0548025	Screw, hex. cap	2
3	24 584 03	Module, ignition	2
4	M-0561025	Screw, hex. socket hd	4
5	24 025 02	Flywheel	1
6	24 100 02	Nut, plastic	2
7	24 584 09	Module, speed advance	1
8	24 086 41	Screw	2
9	X-42-15	Key	1
10	12 468 03	Washer, plain	1
11	12 086 14	Screw, hex. flange	1
12	24 157 03	Fan	1
13	24 468 11	Washer, spring	4
14	24 112 14	Spacer, grass screen	4
15	24 144 25	Shaft, front drive	1
16	M-0839025	Screw, hex. flange	4
17	24 141 06	Ring, support	1
18	24 162 22	Screen, grass	1
19	X-25-53	Washer, plain	4
20	M-0603100	Screw, hex. cap	4
21	24 086 18	Screw, phillips hd.	2
22	X-25-92	Washer, plain	2
23	25 403 03	Rectifier-regulator	1
24	12 132 02	Spark Plug	2

Ref. No.	Part No.	Description	No. Used
25	47 154 01	Clip, cable	1
26	X-25-63	Washer, plain	1
27	48 154 02	Clip, cable	1
		Not Illustrated	
	25 518 28	Lead, black, (4" – 18 gauge – insulated grip barrel eyelet terminals)	1
	24 176 42	Harness, wiring	1
	24 176 49	Harness, wiring (Includes 3 connectors)	1
	236602	Connector	1
	15 155 01	Connector	1
	52 155 04	Connector	1
	24 126 71	Bracket, stator wire	1
	25 086 43	Screw, set (adjusts grass scraper blade)	1
	X-22-11	Washer, lock(for ground screw & wire)	1
	41 155 03	Connector	1
		Connector	1
	X-67-3	Screw (mounts 5 wire connector to baffle)	2
	X-25-63	Washer, plain	1

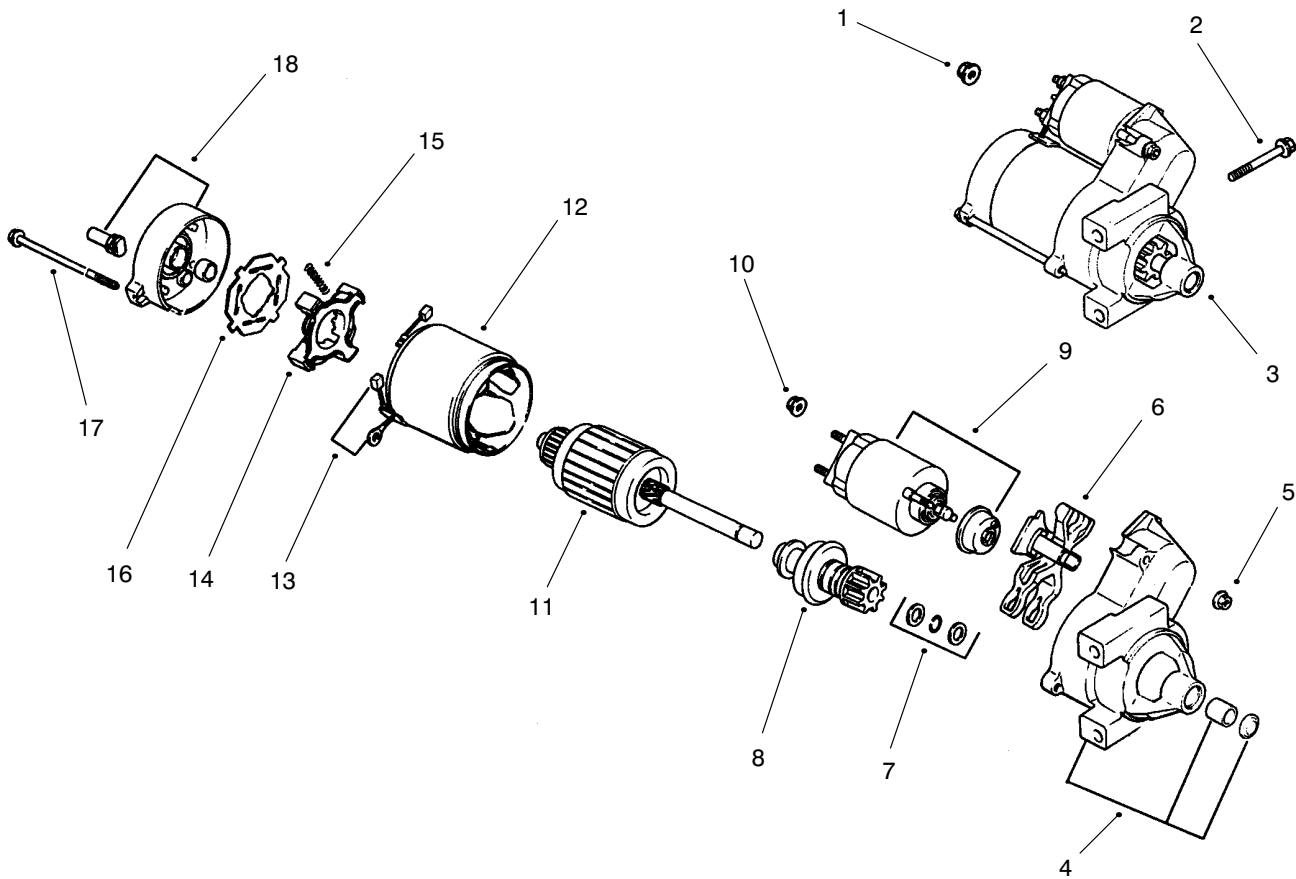
Obtain Parts From Your Local Kohler Dealer
Kohler Engine #CH22S-PS-66545



GROUP 6 – BLOWER HOUSING & BAFFLES

Ref. No.	Part No.	Description	No. Used	Ref. No.	Part No.	Description	No. Used
1	24 027 86	Housing, blower (Includes 2-5)	1	10	M-0645016	Screw, hex. flange	6
2	24 100 02	Nut, plastic	2	11	24 063 20	Baffle, cyl. barrel-#2 side	1
3	24 755 90	Kit, button plug	1	12	24 063 17	Baffle, valley - #2 side	1
4	24 086 43	Screw, set	1	13	M-0545010	Screw, hex. flange	2
5	24 100 01	Nut, plastic	2	14	24 063 24	Baffle, valley - #1 side	1
6	M-0551016	Screw, hex. flange	1	15	24 063 30	Baffle, cyl. barrel-#1 side	1
7	M-0545016	Screw, hex. flange	5	16	24 146 08	Plate, backing - #1 side	1
8	M-0545020	Screw, hex. flange	2			Not Illustrated	
9	24 146 02	Plate, backing - #2 side	1		24 113 13	Decal, HP	1

Obtain Parts From Your Local Kohler Dealer
Kohler Engine #CH22S-PS-66545

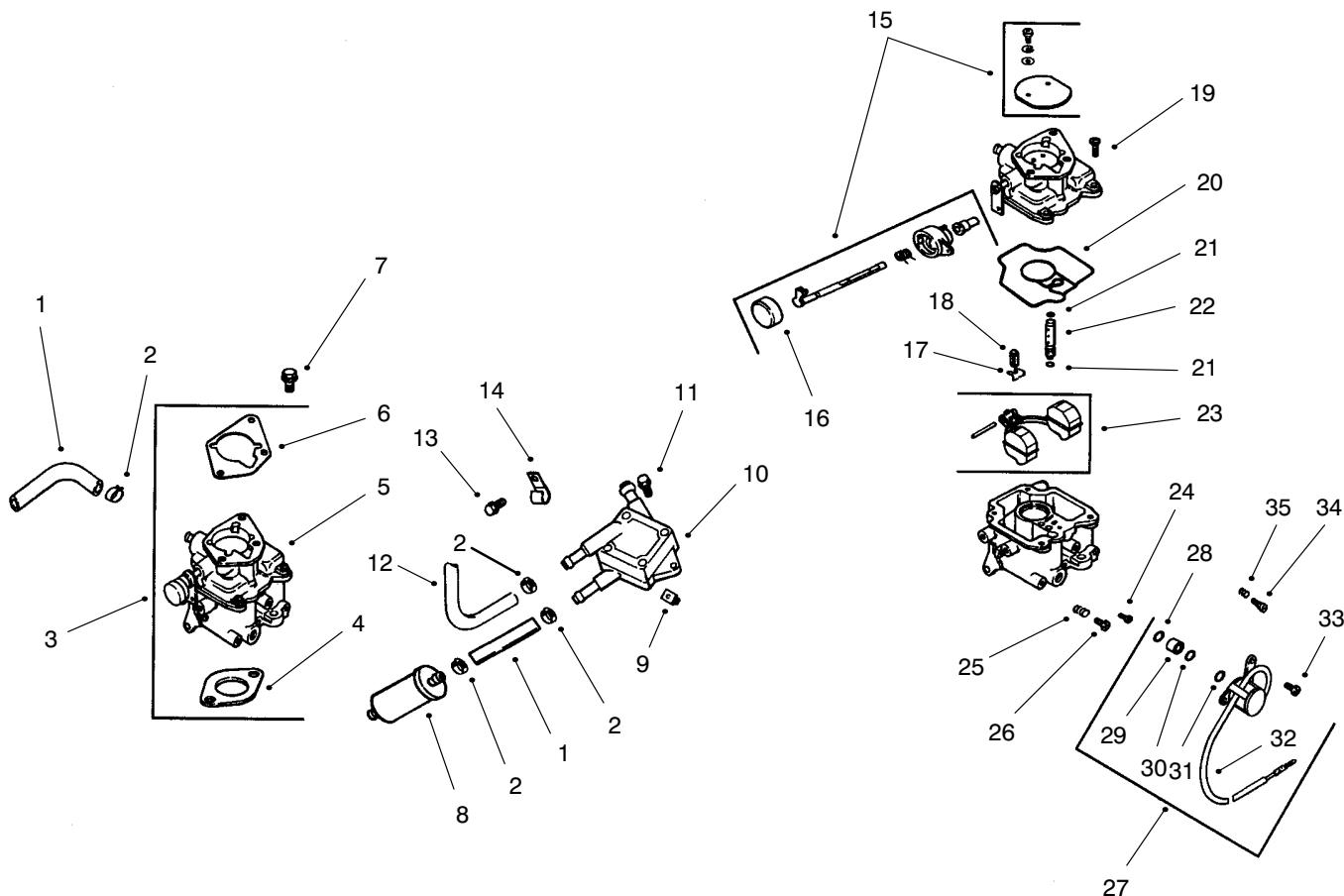


GROUP 7 – STARTING SYSTEM

Ref. No.	Part No.	Description	No. Used
1	M-0841080	Nut, hex flange	1
2	M-0839080	Screw, hex. flange	2
3	24 098 01	Starter, solenoid shift assembly (Incl. 4-18)	1
4	24 081 04	Drive, end cap	1
5	52 100 10	Nut, starter	2
6	12 090 10	Lever, starter drive	1
7	24 755 84	Kit, starter repair	1
8	12 239 01	Drive, pinion	1
9	52 435 02	Solenoid	1

Ref. No.	Part No.	Description	No. Used
10	52 100 09	Nut, starter	1
11	12 170 04	Armature, starter	1
12	12 471 01	Frame	1
13	52 221 01	Kit, brush & spring (Includes 15)	1
14	52 323 03	Holder, brush	1
15	52 089 09	Spring, brush	4
16	52 168 01	Insulator	1
17	52 211 05	Bolt, thru	2
18	24 301 01	Commutator, end cap	1

Obtain Parts From Your Local Kohler Dealer
 Kohler Engine #CH22S-PS-66545

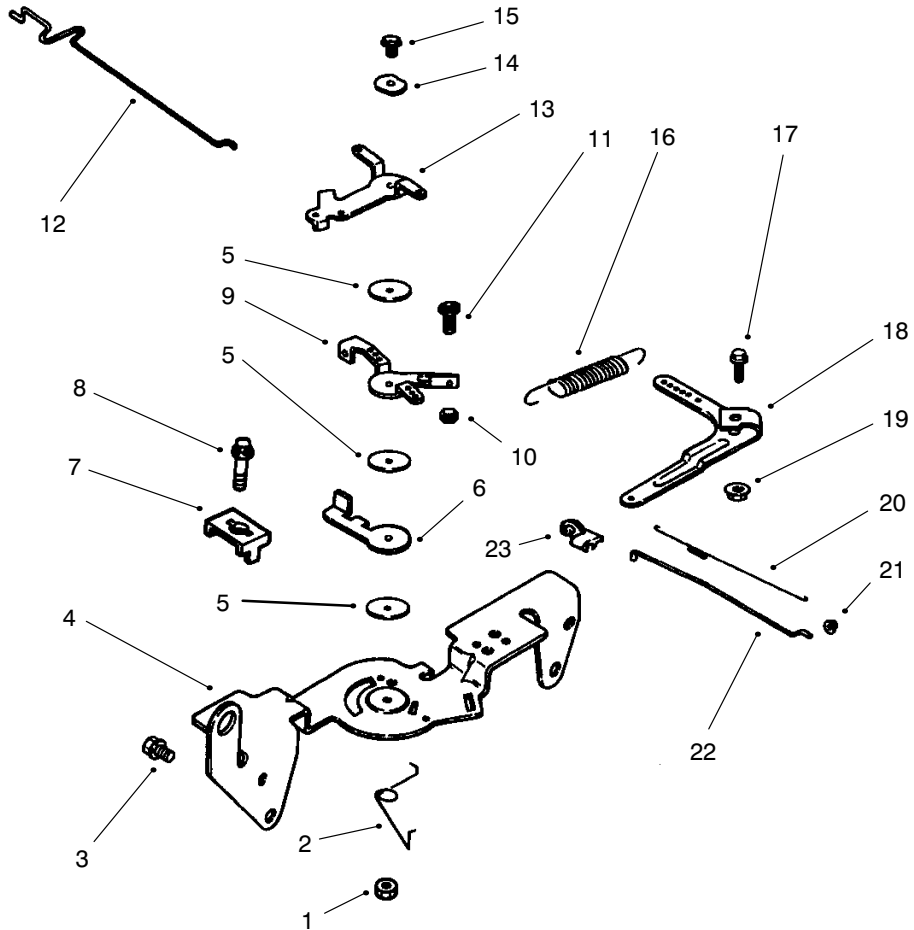


GROUP 8 – FUEL SYSTEM

Ref. No.	Part No.	Description	No. Used
1	25 353 10	Line, fuel – 9"	2
2	X-426-9	Clamp, hose	6
3	24 853 32	Kit, carburetor w/gasket (Includes 4-6)	1
4	24 041 06	Gasket, air cleaner base	1
5	24 053 32	Carburetor assembly (Includes 15-35) (For information only not available separately)	1
6	24 041 17	Gasket, carburetor	1
7	M-0651030	Screw, hex. flange	2
8	24 050 02	Filter, fuel	1
9	24 100 01	Nut, plastic	2
10	24 393 04	Pump, fuel – pulse	1
11	24 086 12	Screw, hex. cap	2
12	24 353 04	Line, fuel 17"	1
13	M-0650012	Screw, hex. flange	1
14	47 154 01	Clip, cable	1
15	24 757 07	Kit, choke repair (Includes 16)	1
16	24 173 02	Cap, choke lever	1
17	24 154 01	Clip, inlet needle valve	1

Ref. No.	Part No.	Description	No. Used
18	24 462 01	Valve, inlet needle	1
19	24 086 09	Screw, carburetor body	4
20	24 041 09	Gasket, carburetor body	1
21	24 153 02	O-Ring, slow jet	2
22	24 337 01	Jet, slow	1
23	24 757 02	Kit, float repair	1
24	24 337 02	Jet, main	1
25	24 089 10	Spring, idle adjust screw	1
26	24 086 10	Screw, idle adjusting	1
27	24 757 01	Kit, solenoid (Includes 28-33)	1
28	24 153 06	O-Ring	1
29	24 521 01	Seat, solenoid	1
30	24 153 05	O-Ring	1
31	24 153 04	O-Ring	1
32	24 435 01	Solenoid	1
33	24 086 07	Screw, solenoid	2
34	24 368 01	Needle, idle	1
35	24 089 11	Spring, idle needle	1
	24 757 03	Not Illustrated Kit, carburetor repair	1

Obtain Parts From Your Local Kohler Dealer
Kohler Engine #CH22S-PS-66545

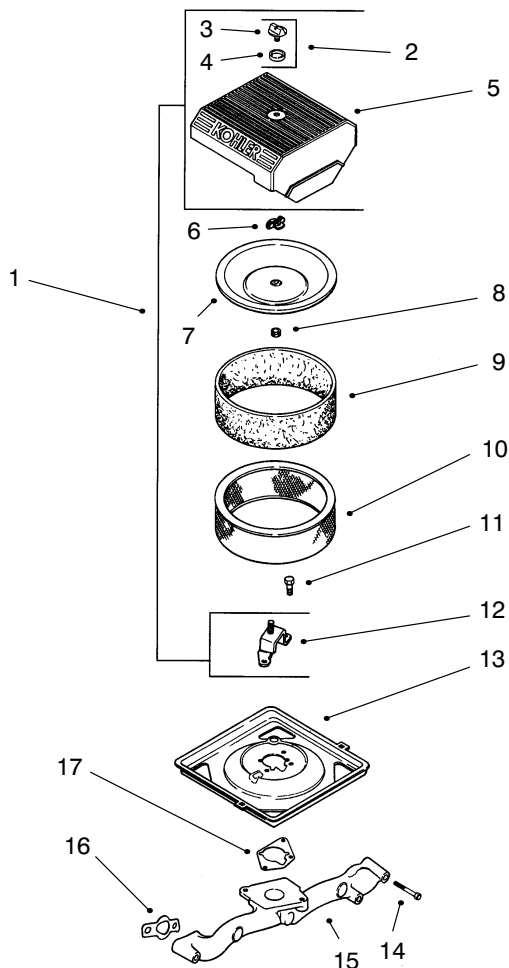


GROUP 9 – ENGINE CONTROLS

Ref. No.	Part No.	Description	No. Used
1	M-0547050	Nut, hex. lock	1
2	24 089 03	Spring, choke return	1
3	M-0645016	Screw, hex. flange	4
4	24 126 56	Bracket, control	1
5	24 468 01	Washer, plain	3
6	24 090 07	Lever, throttle actuator	1
7	12 237 01	Clamp, cable	2
8	M-0545016	Screw, hex. flange	2
9	24 090 03	Lever, throttle control	1
10	M-0446030	Nut, hex	1
11	M-0401030	Screw, hex. cap	1
12	24 079 02	Linkage, choke	1

Ref. No.	Part No.	Description	No. Used
13	24 090 05	Lever, choke	1
14	41 468 03	Washer, spring	1
15	M-0545020	Screw, hex. flange	1
16	24 089 15	Spring, governor	1
17	SM-0642025	Screw, hex. flange	1
18	24 090 14	Lever, governor	1
19	M-0641060	Nut, hex. flange	1
20	24 089 01	Spring, linkage	1
21	25 158 08	Bushing, linkage retaining	1
22	24 079 01	Linkage, throttle	1
23	25 158 11	Bushing, linkage retaining	1

Obtain Parts From Your Local Kohler Dealer
 Kohler Engine #CH22S-PS-66545

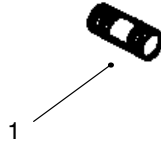


GROUP 10 – AIR INTAKE

Ref. No.	Part No.	Description	No. Used
1	24 743 05	Kit, air cleaner cover (Includes 2-5, 12)	1
2	54 755 01	Kit, knob with sea (Includes 3,4)	1
3	25 341 03	Knob, cover	1
4	24 153 15	Seal, air cleaner cover knob	1
5	24 096 24	Cover, air cleaner	1
6	12 100 01	Wing Nut	1
7	24 096 01	Cover, inner air cleaner	1

Ref. No.	Part No.	Description	No. Used
8	24 032 03	Seal, inner air cleaner	1
9	24 083 02	Precleaner, element	1
10	47 083 03	Element, air cleaner	1
11	M-0639016	Screw, hex. flange	3
12	24 126 21	Bracket, air cleaner base	1
13	24 094 03	Base, air cleaner	1
14	M-0651055	Screw, hex. flange	4
15	24 164 14	Manifold, intake	1
16	24 041 01	Gasket, intake manifold	2
17	24 041 06	Gasket, air cleaner base	1

Obtain Parts From Your Local Kohler Dealer
 Kohler Engine #CH22S-PS-66545



GROUP 11 – EXHAUST

Ref. No.	Part No.	Description	No. Used
1	25 072 04 24 782 01	Stud Miniblock	4 1

Ref. No.	Part No.	Description	No. Used
	24 755 03	Gasket Set	1

Obtain Parts From Your Local Kohler Dealer
 Kohler Engine #CH22S-PS-66545

Toro Part Number Index

Part No.	Page No.	Ref. No.	Qty.	Description
1529	7	15	1	Bearing-Needle
1529	8	1	2	Bearing-Needle
1535	8	30	3	Washer-Thrust
1540	7	11	1	Bearing-Needle
2844	2	6	1	Washer-Flat
2844	4	19	1	Washer-Flat
2844	7	36	1	Washer-Flat
3517	8	8	1	Ball
5108	6	20:3	2	Valve-Tire Tubeless
5108	26	1:2	2	Valve-Tire Tubeless
5618	3	1	2	Ring-Retaining
5991	8	27	1	Fitting-Filter
6449	7	21	2	Seal-Oil
7228	14	5:5	2	Bulb-Light
7007	26	*	2	Tube-Inner109102
8571	8	31	1	Bearing-Needle
8616	3	20	3	Spring-Compression
9038	3	31	1	Grip
9416	7	22	2	Bearing-Needle
9547	7	28	1	Washer-Thrust
9548	6	14	2	Washer-Thrust
100309	7	31	1	Bushing-Cam Pivot
101623	7	8	8	Gear-Pinion
101889	7	6	2	Gear-Axle
102597	20	6	1	Grip
103995	11	16	1	Washer
104047	25	5:2	1	Bushing
105061	7	9	1	Gear-Differential
105269	3	2	1	Pin-Hitch
105316	3	14	3	Cap-Rod
105503	17	41	2	Bushing
105797	2	17	1	Ring-Retaining
105797	3	17	6	Ring-Retaining
105876	7	7	2	Ring-Retaining
106634	3	3	1	Pin-Attachment
106826	7	17	2	Washer-Thrust
106948	28	10	1	Tray-Battery
107069	1	2	6	Nut-Panel
107069	2	8	10	Nut-Panel
107069	3	25	2	Nut-Panel
107069	14	7	4	Nut-Panel
107069	17	15	4	Nut-Panel
107069	27	37	4	Nut-Panel
107374	7	4	4	Washer-Flat
108323	8	26	1	Base-Filter
108363	7	16	2	Pin-Locating
108881	3	36	6	Nut-Hex
108881	4	2	1	Nut-Hex
108881	5	23	1	Nut-Hex
108881	7	10	4	Nut-Hex
108881	18	22	2	Nut-Hex
108881	20	16	1	Nut-Hex
108881	22	8	2	Nut-Hex
108881	24	13	1	Nut-Hex
109102	28	*	1	25 Amp Fuse
110680	26	1:3	2	Wheel
111196	7	5	2	Cap-End
111199	7	14	2	Bearing-Ball
112641	10	9	1	Cover ASM
112652	10	30	1	Shield-Grass
112653	10	31	1	Ring-Retaining
112819	6	*	2	Tube-Inner

*Not Illustrated

Toro Part Number Index (cont.)

Part No.	Page No.	Ref. No.	Qty.	Description
113136	10	16	1	Race-Pump
610358	13	4	1	Nut-Lock
614249	1	12:2	2	Tie Strap
614249	5	32	2	Tie Strap
614249	14	25	2	Tie Strap
614249	25	20	1	Tie Strap
614249	28	8	1	Tie Strap
614672	12	6	2	Bolt-Shoulder
700919	16	8	1	Nut
702062	8	15	1	Gasket-Pump & Motor
911423	7	3	4	Screw-HH
933154	8	5	2	Pin-Spirol
937089	11	13	1	Key-Woodruff
9202514	6	22	4	Washer-Flat
9202524	6	23	A/R	Washer
9335054	3	4	1	Hairpin
9791204	3	5	2	Spacer
3-4685	3	27	2	Washer-Thrust
12-5450	27	3	3	Screw-Thread Forming
12-5450	28	6	4	Screw-Thread Forming
27-0410	14	10	3	Bolt-Shoulder
37-8771	2	23	1	Bolt-Shoulder
37-8771	17	45	2	Bolt-Shoulder
38-1420	17	3	1	Switch-Seat
44-2230	11	3	4	Coupling-Rubber
46-8093	1	10	4	Screw-TAP
48-8020	5	13	4	Washer-Lock
56-2800	10	1	1	Screw-HH
56-2810	10	2	1	Bearing-Ball
56-2820	10	3	2	Seal-Oil
56-2850	10	6	1	Ring-Seal
56-2860	10	7	1	Plate-Pump
56-2870	10	8	1	Ring-Seal
56-2880	10	10	2	Button
56-2890	10	11	1	Pin-Dowel
56-2900	10	12	1	Pin-Drive
56-2910	10	13	1	Shaft-Input
56-2920	10	14	1	Ring-Seal
56-2930	10	15	1	Rotor/Ball-Pump
56-2940	10	56	1	Cam Ring ASM Incl 16 17
56-2950	10	18	2	Piston
56-2960	10	19	2	Ring-Backup
56-2970	10	20	2	O-Ring
56-2980	10	21	1	Pin-Coil
56-2990	10	22	1	Pintle ASM
56-3000	10	23	2	Ring-Retaining
56-3010	10	24	2	Ball-.313 Dia
56-3020	10	25	2	Body-Valve
56-3030	10	26	1	Ball-.438 Dia
56-3040	10	27	1	Spring-Valve
56-3050	10	28	1	Plug-Valve
56-3060	10	29	1	Pin-Dowel
56-3090	10	5	4	Ring-Retaining
56-3100	10	33	6	Screw-HSBH
56-3110	10	34	6	Roller
56-3120	10	35	1	Carrier
56-3130	10	36	1	Seal-Oil
56-3140	10	37	1	Kit-Shaft
56-3170	10	40	1	Insert-Ring
56-3180	10	41	1	Spring-Valve
56-3200	10	43	2	Body-Valve
56-3210	10	44	2	Ball-.625 Dia

*Not Illustrated

Toro Part Number Index (cont.)

Part No.	Page No.	Ref. No.	Qty.	Description
56-3220	10	45	1	Rotor/Ball-Motor
56-3230	10	46	1	Shaft-Output
56-3240	10	47	1	Race-Motor
56-3250	10	48	1	ASM-Plug
56-3260	10	49	1	O-Ring
56-3280	10	52	1	Bearing-Ball
56-3290	10	53	1	Ring-Retaining
56-3310	10	55	1	Kit-Seal
62-7770	16	7	1	Key-Ignition
63-1590	18	16	1	Spring-Extension
63-1590	21	3	1	Spring-Extension
65-7410	20	2	3	Switch-Single Pole
66-4160	24	12	1	Spring
69-8420	5	28	1	Lockwasher
71-4410	11	6	4	Spacer-Coupling
71-4411	11	4	4	Spacer-Coupling
76-1340	17	7	1	Decal-USA
79-3340	7	1	2	Axle-Rear
79-3370	7	2	2	Key-Square
79-5270	8	28	1	Filter-Oil
80-8760	17	16	1	Decal-Danger
80-8760	17	25:1	1	Decal-Danger
83-2720	26	2	10	Bolt-Lug
86-9320	19	2	2	Bushing-Nylon
92-1099	13	2	1	Bolt-Shoulder
92-6780	27	17	4	Nut-HHF
92-6785	16	11	1	Switch-Ignition
92-6798	5	2	1	Cap-Rod
92-6877	27	30	1	Valve-Oil Drain
92-7008	18	41	1	Rod End
92-7020	14	11	4	Screw-TTH
92-7020	15	2	12	Screw-TTH
92-7020	16	19	4	Screw-TTH
92-7020	17	11	4	Screw-TTH
92-7674	3	23	2	Bolt-Shoulder
92-8747	1	22	2	Decal-Attach A Matic
93-1265	28	12:1	1	Decal-Hot
93-4366	24	10	1	Magnet ASM
93-6601	24	10:1	1	Spring
93-9810	10	17	1	Ring-Cam
94-1867	28	2	1	Battery
94-2001-03	7	23	1	Case-Transaxle
94-2002-03	7	29	1	Case-Transaxle
94-2003	8	24	1	Transmission
94-2006	7	27	1	M-Gear
94-2007	7	26	1	Shaft-Brake
94-2008	7	25	1	Gear-Sliding
94-2009	7	37	1	Drum-Brake
94-2010	8	33	1	Shaft-Input
94-2011	8	35	1	Gear-Hi Lo
94-2014	8	2	1	Tube-Shifter Rail
94-2015	8	4	1	Fork-Hi Lo Shift
94-2019-03	7	30	1	Arm-Brake Pivot
94-2021	7	12	2	Bearing-Needle
94-2022	7	13	1	Gasket-Transaxle
94-2024	8	9	1	Spring-Shift
94-2025	5	27	1	Washer-Boot
94-2053	6	20:5	4	Snap Ring
94-2054	8	3	1	Rail-Shift
94-2059	11	11	1	Hub
94-2068	27	29	1	Spacer-Clutch
94-2083-03	2	37	1	Frame

*Not Illustrated

Toro Part Number Index (cont.)

Part No.	Page No.	Ref. No.	Qty.	Description
94-2087-01	15	11	1	Sidepanel-Hood
94-2088-01	15	8	1	Sidepanel-Hood
94-2089-01	17	28	1	Footrest
94-2090-01	17	21	1	Footrest
94-2093	15	3	1	Cover-Rear
94-2095	17	27	1	Pad-Footrest
94-2096	17	20	1	Pad-Footrest
94-2099	14	5:6	1	Lens-Headlight
94-2100	13	28	1	Knob-Lift
94-2101	16	18	1	Dash
94-2102	16	1	1	Boot-Steering
94-2103	15	10	1	Cover-Bumper
94-2104	15	9	1	Grille
94-2106-03	17	40	2	Spring-Compression
94-2107-03	17	39	1	Base-Seat
94-2111-03	17	46	1	Mount-Seat
94-2112	17	37	1	Slide-Seat
94-2120	17	6	1	Pod-Control
94-2121	16	13	1	Knob-Throttle
94-2122	16	17	1	Knob-Choke
94-2123	21	20	1	Pad-Brake Pedal
94-2124	17	35	2	Lamp-Taillight
94-2142-03	4	13	1	Arm-Lower
94-2143	8	6	1	Arm-Shifter
94-2144	18	8	1	Slider-Speed Control
94-2145	18	11	1	Plate-Cam
94-2148-03	8	19	1	Plate-Support Bracket
94-2149-03	18	20	1	Plate-Control
94-2157-03	20	5	1	Latch-Parking Brake
94-2158	24	9	1	Plate-Magnet
94-2168	18	13	1	Standoff-Slider
94-2169	18	9	2	Standoff-Cam
94-2177	17	38	1	Seat Slide-Latch
94-2190	27	24	1	Clutch-PTO
94-2191	6	20:4	2	Tire
94-2193	26	1:1	2	Tire
94-2194	26	1	2	Rear Wheel & Tire ASM
94-2196	6	10	1	Arm-RH Steering
94-2197	6	8	1	Arm-LH Steering
94-2199-03	27	31	1	Plate-Engine
94-2205-03	6	2	1	Pivot Pin
94-2212	6	5	2	Rod-Steering
94-2219	4	9	1	Spacer
94-2230-03	3	15	1	Hanger RH
94-2231-03	3	16	1	Hanger LH
94-2233	3	28	2	Spacer
94-2250-03	3	35	1	Latch ASM
94-2251-03	3	7	2	Plate-Hitch
94-2256	3	18	3	Rod-Lock
94-2258	3	19	3	Lock-Latch
94-2260	12	21	2	Lift Sleeve ASM
94-2262	12	16	2	Rod-Lift
94-2263-03	12	2	1	Support-Deck Lift
94-2266-03	12	22	1	Support-Cylinder
94-2277-03	12	17	1	Bar-Lift
94-2278-03	12	18	1	Lift Arm ASM-RH
94-2279-03	12	7	1	Lift Arm ASM-LH
94-2300	13	12	1	Lift Cylinder ASM
94-2301	12	12	2	J Pin
94-2304-03	3	26	1	Tray-Battery
94-2308-03	1	15	1	Bumper-Frame
94-2309	18	17	1	Standoff-Spring

*Not Illustrated

Toro Part Number Index (cont.)

Part No.	Page No.	Ref. No.	Qty.	Description
94-2310	11	15	1	Hub
94-2313	18	2	4	Retainer-Bearing
94-2342-03	21	15	1	Bracket-Forward Reverse
94-2343-03	21	11	1	Bracket-Support
94-2345-03	21	13	1	Pivot Shaft
94-2351-03	21	10	1	Brake Bracket
94-2352-03	21	19	1	Pedal-Brake
94-2356-03	27	28	1	Clutch-Stop
94-2371	11	12	1	Spacer-Fan
94-2373-03	11	1	1	Drive Shaft
94-2375-03	23	2	1	Brake Pivot Plate
94-2382	5	4	1	Bracket
94-2393	23	14	1	Rod-Brake
94-2409	22	10	1	Link-Slow Down
94-2411	12	8	2	Stop-Lift Adj.
94-2413	2	4	4	U-Nut
94-2417-03	15	1	1	Screen-Rear
94-2419	7	35	1	Brake Band
94-2425	11	10	1	Key-Square
94-2451	5	11	1	Power Column ASM
94-2468	18	30	1	Cam-Eccentric
94-2475	3	29	1	Rod-Spacer
94-2488-03	23	5	1	Hydro Pivot
94-2494-03	24	3	1	Bracket-Cruise Control
94-2497	18	35	1	Rod-Slider To Pivot
94-2498	23	9	1	Rod-Pivot To Pedal
94-2499	21	4	1	Link-Brake Pedal
94-3518	17	1	1	Seat V-811
94-4208	16	9	1	Hourmeter
94-4496	17	23:4	2	Screw
94-4496	28	13	2	Screw
94-7500	18	39	1	Rod-Lift Lever
94-7501	21	12	1	Spacer-Pedal
94-7504	19	3	1	Shift Rod
94-7507	19	9	1	Shift Rod
94-7510	8	7	1	Arm-Hi Lo
94-7521-03	5	25	1	Power Steering Pivot
94-7522-03	27	19	1	Shroud-Muffler
94-7524-03	27	21	1	Shroud-Muffler
94-7536-03	6	19	1	RH Spindle
94-7537-03	6	13	1	LH Spindle
94-7538	6	20:2	4	Bearing ASM (Incl. Ref. #20:5)
94-7539	6	4	2	Balljoint-LH Thread
94-7541	6	20:1	2	Wheel
94-7542	6	20	2	Wheel & Tire ASM
94-7556	4	18	1	Arm-Upper
94-7558	27	12	1	Muffler-Kohler
94-7559	8	12	1	Tube-Dipstick
94-7560	27	15	1	Reflector-Heat (Kohler)
94-7562-03	20	10	1	Bracket-Switch
94-7564	18	24	1	Spacer
94-7565	8	14	1	Pinion-Bevel
94-7566	8	32	1	Gear-Bevel
94-7567	5	19	1	Control Unit
94-7568-03	6	17	1	Axle-Front
94-7569	23	3	2	Bushing
94-7571	18	33	1	Rod End LH
94-7572	21	14	1	Tie Rod End RH
94-7573	22	7	1	Tie Rod End LH
94-7573	23	6	1	Tie Rod End LH
94-7574	12	4:1	2	Bushing-Flanged
94-7574	23	1	2	Bushing-Flanged

*Not Illustrated

Toro Part Number Index (cont.)

Part No.	Page No.	Ref. No.	Qty.	Description
94-7575	24	4	1	Spacer-Cruise
94-7579	22	3	1	Lever-Slow Down
94-7581	4	10	1	Housing-Power Steering
94-7582	5	22	1	Bolt-Shoulder
94-7582	18	38	1	Bolt-Shoulder
94-7582	20	7	1	Bolt-Shoulder
94-7582	22	9	2	Bolt-Shoulder
94-7582	24	8	1	Bolt-Shoulder
94-7586	18	15	1	Arm-Return To Neutral
94-7599-03	5	21	1	Bracket-Pivot
94-7600-03	12	20	1	Spacer-Strap
94-7602	17	5	1	Switch Cruise
94-7604	28	1	1	Harness-Main
94-7608	16	23	1	Harness-6 Light
94-7611	17	33	1	Harness-Rear
94-7612	27	4	1	Module-Kohler
94-7616	16	21	1	Gauge-Oil Temperature
94-7619	27	11	1	Sender-Oil Temp.
94-7637	18	5	1	Rod End RH
94-7643-03	2	33	1	Tower ASM
94-7680-03	8	11	1	Dipstick
94-7692	8	23	1	Fitting-Hose
94-7693	8	16	1	Fitting-Hydraulic
94-7694	8	18	1	Fitting-Hydraulic
94-7714	13	1	1	Handle-Lift
94-7739-03	2	41	1	Strap-Torque
94-7740-03	2	2	1	Support - Gas Tank
94-7777-03	3	21	2	Latch-Pulley Box
94-7814	18	21	1	Locater-Control Plate
94-7816	18	27	1	Arm-Speed Control
94-7817	18	10	1	Bolt-Shoulder
94-7818	21	5	1	Retainer-Screw
94-7819	4	7	2	Spacer-Stop
94-7820-03	4	11	1	Plate-Power Steering
94-7824	21	18:1	1	Pad-Hydro Pedal
94-7833	19	5	1	Lever-Hi Lo
94-7834	19	8	1	Bracket-Pivot
94-7835	19	4	1	Spring-Torsion
94-7855-03	3	33	1	Mid Bracket ASM
94-7871	6	25	2	Cap-Dust
94-7905	20	9	1	Retainer-Screw
94-7906	23	15	1	Spring-Compression
94-7907	4	25	1	Spacer
94-7910	1	8	4	Grommet
94-7913	18	23	1	Bushing-Flange
94-7919	22	1	1	Bushing
94-7944	13	18	1	Hose ASM
94-7945	13	9	1	Hose ASM
94-7946	4	22	1	Hose ASM
94-7946	5	18	1	Hose ASM
94-7947	4	23	1	Hose ASM
94-7947	5	8	1	Hose ASM
94-7948	5	14	1	Hose ASM
94-7949	5	9	1	Hose ASM
94-7955	11	17	1	Screw-Lock
94-7955	23	7	1	Screw-Lock
94-7969	8	17	1	Tube-Hydraulic
94-7970	8	41	1	Tube-Hydraulic
94-7970	13	19	1	Tube-Hydraulic
94-7971	2	32	1	Tube-Hydraulic
94-7971	8	42	1	Tube-Hydraulic
94-7972	2	40	1	Screw-HH

*Not Illustrated

Toro Part Number Index (cont.)

Part No.	Page No.	Ref. No.	Qty.	Description
94-7973	27	22	1	Screw-Cap
94-7975	11	18	4	Screw-Square Set
94-7976	4	4	1	Screw-HH
94-7980	24	5	1	Rod-Cruise Control
94-7994-03	1	18	1	Bracket-Hinge Lower RH
94-7995-03	1	6	1	Bracket-Hinge Lower LH
94-8189	25	17	1	Clamp-Hose
95-0691	14	4	1	Harness-Wire
95-1653	20	13	1	Switch-Single Pole
95-3029	27	38	1	Cruise Module
95-3800-03	14	12	1	Front Bulkhead
95-3801-03	18	4	1	Slider Lift
95-3805	5	6	1	Spring
95-3807	2	15	1	Hose ASM
95-3807	5	16	1	Hose ASM
95-3809	25	5	1	Tank-Gas
95-3830	16	22	1	Gauge-Fuel
95-3842	16	4	1	Lens-Dash
95-3843	16	6	1	Housing-Light
95-3844	16	2	1	Retainer-Boot
95-3857	18	42	1	Screw-Button Head
95-3858	17	29	2	Bracket-Footrest
95-3892-03	2	19	1	Bracket-Latch
95-3895	2	24	1	Spring-Extension
95-3899	2	21	1	Latch Lever
95-3900	2	22	1	Tension Lever-Latch
95-3968	25	5:9	1	Fitting
95-3971	25	5:5	1	Sender-Fuel Level
95-3961-03	2	9	1	Support-Fuel Tank
95-3964	5	3	1	Lever-Tilt
95-3965	4	3	1	Cylinder-Hydraulic
95-3989	1	7	4	Mount-Sidepanel
95-3991	2	13	1	Filter-Hydraulic Screen
95-4005-03	2	39	1	Cover-Rear
95-4007	13	12:1	1	Seal Kit
95-4013	1	1	4	Latch Assembly
95-4019	13	24	1	Valve-Hydraulic
95-4022	19	7	1	Knob-Hi Lo Shift
95-4035	16	16	1	Control Choke ASM
95-4036	16	15	1	Control Throttle ASM
95-4042	28	11	2	Hold Down-Battery
95-4044	28	14	1	Shield-Battery
95-4060	6	21	2	Washer-Wheel
95-4064	13	11	1	Clip-Pin
95-4070-03	14	14	1	Hood Support Rod
95-4072	16	5	1	Decal-Dash Lens
95-4078	14	1:5	1	Foam Seal-Rear Bulkhead
95-4081-03	1	17	1	Hood Support RH
95-4082-03	1	9	1	Hood Support LH
95-4104	27	36:3	1	Foam Seal
95-4107	17	23:2	1	Retainer-Cover
95-4113-03	15	13	1	Cover-Side RH
95-4114-03	15	5	1	Cover-Side LH
95-4115	17	8	4	Nut-Speed
95-4117-03	27	39	2	Bracket-Bulkhead
95-4125	27	1	1	Trim
95-4129	14	5:4	4	Clip
95-4133	8	22	1	Hose-Suction
95-4134	13	22	1	Fitting-Hydraulic Tee
95-4135	8	40	1	Fitting-Hydraulic 45
95-4136	4	21	2	Fitting-Hydraulic 45 DEG
95-4136	13	17	1	Fitting-Hydraulic 45 DEG

*Not Illustrated

Toro Part Number Index (cont.)

Part No.	Page No.	Ref. No.	Qty.	Description
95-4137	5	10	1	Fitting-Hydraulic Long
95-4138	2	14	2	Fitting-Hydraulic
95-4138	5	17	2	Fitting-Hydraulic
95-4138	8	39	1	Fitting-Hydraulic
95-4139	5	15	2	Fitting-Hydraulic Straight
95-4140	13	21	1	Fitting-Hydraulic 90 DEG.
95-4141	13	7	3	Fitting-Hydraulic 90 DEG
95-4157	25	22:3	1	Foam-Tank Center
95-4158	25	22:2	1	Foam-Tank RH
95-4159	25	22:1	1	Foam-Tank LH
95-4165	2	20	1	Spring-Torsion
95-4166	14	5	1	Headlight ASM
95-4168	13	3	1	Trunnion-Lift Lever
95-4182	5	29	1	Nut-HH Jam
95-4185	18	3	4	Bearing-Ball
95-4186	25	4	1	Hose-Vent
95-4192	25	1	1	Gas Cap ASM-Unleaded
95-4197	14	3	2	Nut Plate
95-4221	13	5	1	Spring-Ext. Lift
95-4223	11	14	1	Fan-Hydro
95-4231	15	4	2	Foam-Seal
95-4233	14	1:6	1	Foam-Bulkhead/Hood
95-4234	16	3	6	Screw-Pan Hd
95-4235	13	6	1	Washer
95-4236	13	27	1	Tscrew-PPH
95-4236	16	12	2	Tscrew-PPH
95-4238	16	20	2	Gasket-Foam
95-4242	17	42	2	Cap-Seat Spring
95-4245	13	16	1	Screw-Thread Locking
95-4245	18	31	1	Screw-Thread Locking
95-4246	2	35	1	Baffle-Fan
95-4248	14	6	1	Logo-Headlight
95-4256	12	13	2	Spring-Compression
95-4258	1	12:1	1	Cover-Brace
95-4258	13	14	2	Cover-Brace
95-4259	14	1:4	2	Foam-Lower Bulkhead
95-4260	15	7	1	Decal-Hood LH
95-4261	15	12	1	Decal-Hood RH
95-4262	17	2	1	Decal-Fender
95-4263	17	23:1	1	Decal-Danger
95-4271	25	14	2	Clamp-Hose
95-4272	25	15	1	Hose-Fuel
95-7489	16	10	1	Switch-PTO
95-7854	28	3	1	Cable-Battery Red
95-7873	28	4	1	Cable-Battery Black
98-1459	5	30	1	Decal
98-1474	5	1	1	Steering Wheel ASM
98-1492	28	17	1	Wire
98-1602	14	5:2	2	Decal-Sidelight
98-1605	15	6	2	Decal
98-1616	25	10	3	Clamp-Tube
98-1617	12	24	1	Clamp-Tube
98-1620	13	26	1	Link-Lift
98-1621	17	23	1	Tunnel Cover ASM
98-1629	3	30	2	Washer
98-1632	3	9	2	Decal-Attach A Matic
98-1636	21	9	4	Bushing-Flange
98-1639	13	10	1	Pin-Clevis
98-1642	6	26	2	Cap-Spindle
98-1649	14	13	1	Washer-Spring
98-2358	20	15	1	Clamp-R
98-2358	24	15	2	Clamp-R

*Not Illustrated

Toro Part Number Index (cont.)

Part No.	Page No.	Ref. No.	Qty.	Description
98-2358	28	7	3	Clamp-R
98-2390	17	44	1	Clamp-R
98-3050	25	5:1	1	Fitting Orifice
98-3051	14	16	1	Washer-Plastic
98-3052	4	20	1	Screw-Thread Locking
98-3086	27	36:1	2	Foam-Kohler
98-3087	4	5	1	Washer-Power Steering
98-3087	20	17	1	Washer-Power Steering
98-3499	22	4	1	Washer-Flat
98-3581	27	10	1	Decal-22hp Engine
98-3582	12	4	1	Bellcrank & Bushing ASM
98-3591	14	5:1	2	Socket
98-3595	14	24	1	Shield-Support Rod
98-3597	14	5:7	1	Decal-Headlight Reflector
98-5012	27	36:2	1	Decal-Warning
98-5014	1	5:1	1	Decal-Warning
98-5014	1	21:1	1	Decal-Warning
98-5023	27	42	1	Bumper
98-5025-01	17	25	1	Tunnel ASM
98-5056	28	12	1	Strap ASM
98-5060-03	27	36	1	Bulkhead ASM
98-5061-03	1	21	1	Support ASM
98-5064-03	1	5	1	Support ASM
98-5072	28	20	1	Tie-Cable
98-7200	27	34	1	Nipple-Pipe
98-7203	1	12	1	Hood Support ASM
98-7204	14	1:2	1	Rear Bulkhead ASM (Incl. Ref. #1:4 1:5 1:6)
98-7205	14	1	1	Hood ASM
98-7207	21	18	1	Hydro Pedal ASM
98-7208	25	22	1	Rear Body ASM
98-7210	14	5:3	1	Reflector ASM (Incl. Ref. #5:2 & 5:7)
98-7211	5	1:1	1	Cover ASM (Incl. Ref. #30)
98-7249	28	5	3	Relay
98-7377	10	4	1	ASM-Pump
98-7378	10	58	1	Fitting-90 Bent Tube
98-7379	10	50	1	Body
98-7380	10	57	1	ASM-Body
98-7390	25	5:10	1	Gage
98-8083	3	6	1	Hitch ASM
98-8086	6	12	2	Nut-Lock
98-8088	6	6	2	Nut-Lock
98-8089	6	28	2	Nut-Lock
98-8711	17	31	1	Gate-Hi Lo Shift
99-2326	25	5:6	1	Gasket-Fuel Sender
99-3716	25	5:3	1	Fitting-Fuel Shut Off
105763-03	7	20	2	Hub-Wheel
218-578	28	*	2	10 Amp Fuse
237-21	4	21:2	2	O-Ring
237-21	5	15:2	2	O-Ring
237-21	13	7:2	3	O-Ring
237-21	13	17:2	1	O-Ring
237-22	2	14:1	2	O-Ring
237-22	5	10:2	1	O-Ring
237-22	5	17:1	2	O-Ring
237-22	8	39:1	1	O-Ring
237-22	8	40:2	1	O-Ring
237-22	13	21:2	1	O-Ring
237-22	13	22:2	2	O-Ring
237-30	8	16:2	1	O-Ring
237-30	8	18:2	1	O-Ring
237-42	2	14:2	2	O-Ring
237-42	4	21:1	2	O-Ring

*Not Illustrated

Toro Part Number Index (cont.)

Part No.	Page No.	Ref. No.	Qty.	Description
237-42	5	10:1	1	O-Ring
237-42	5	15:1	2	O-Ring
237-42	5	17:2	2	O-Ring
237-42	8	16:1	1	O-Ring
237-42	8	18:1	1	O-Ring
237-42	8	39:2	1	O-Ring
237-42	8	40:1	1	O-Ring
237-42	13	7:1	3	O-Ring
237-42	13	17:1	1	O-Ring
237-42	13	21:1	1	O-Ring
237-42	13	22:1	1	O-Ring
237-80	8	23:1	1	O-Ring
240-9	27	7	1	Grommet
2412-36	25	5:4	1	Clamp
2412-94	25	6	1	R-Clamp
2412-106	2	28	1	R Clamp
2412-141	8	21	2	Clamp-Hose
251-82	4	8	2	Bearing-Ball
253-44	7	38	1	Seal-Oil
281-10	7	24	1	Plug-Pipe
281-10	8	25	1	Plug-Pipe
283-16	13	25	1	Pin-Clevis
283-47	19	11	1	Pin-Clevis
2811-16	27	33	1	Elbow-90 DEG
302-5	6	18	2	Fitting-Grease
302-5	12	25	1	Fitting-Grease
302-5	21	24	1	Fitting-Grease
302-5	23	17	2	Fitting-Grease
302-11	6	16	1	Fitting-Grease
321-3	25	9	1	Screw-HH
321-3	27	13	6	Screw-HH
321-4	2	25	3	Screw-HH
321-4	2	34	2	Screw-HH
321-4	28	18	2	Screw-HH
321-5	8	29	2	Screw-HH
321-10	13	23	2	Screw-HH
322-3	1	4	12	Screw-HH
322-3	17	26	14	Screw-HH
322-3	18	19	2	Screw-HH
322-3	27	5	4	Screw-HH
322-5	21	17	2	Screw-HH
322-6	4	17	4	Screw-HH
322-6	5	24	2	Screw-HH
322-6	18	1	1	Screw-HH
322-7	11	5	4	Screw-HH
322-7	27	44	4	Screw-HH
322-9	18	7	2	Screw-HH
322-10	18	14	1	Screw-HH
322-11	11	7	4	Screw-HH
322-12	18	6	1	Screw HH
322-13	18	32	1	Screw-HH
322-32	6	9	2	Screw-HH
323-4	2	38	2	Screw-HH
323-6	2	42	4	Screw-HH
323-6	3	24	2	Screw-HH
323-6	24	1	4	Screw-HH
323-6	25	11	1	Screw-HH
323-6	27	18	4	Screw-HH
323-7	1	16	4	Screw-HH
323-7	2	5	4	Screw-HH
323-7	3	11	4	Screw-HH
323-7	4	1	2	Screw-HH

*Not Illustrated

Toro Part Number Index (cont.)

Part No.	Page No.	Ref. No.	Qty.	Description
323-7	12	1	5	Screw-HH
323-7	21	1	4	Screw-HH
323-7	27	32	3	Screw-HH
323-8	4	26	1	Screw-HH
323-8	8	37	2	Screw-HH
323-9	8	36	3	Screw-HH
323-9	27	35	4	Screw-HH
323-10	4	15	1	Screw-HH
323-13	8	20	4	Screw-HH
323-15	4	12	1	Screw-HH
323-18	12	23	4	Screw-HH
323-44	3	8	6	Screw-HH
3218-3	7	19	4	Nut-HJ
3220-2	18	36	1	Nut-Jam
3220-3	18	40	1	Nut-Hex Jam
3220-3	21	23	1	Nut-Hex Jam
3220-3	23	10	1	Nut-Hex Jam
3220-5	6	3	2	Nut-Hex
3220-12	6	11	2	Nut-Hex
3220-16	22	6	1	Nut-HJ
3220-16	23	8	1	Nut-HJ
3220-20	18	34	1	Nut-Hex Jam
3229-1	2	31	1	Bolt-CARR
3229-1	5	7	2	Screw-CARR
3230-1	2	36	2	Bolt-CARR
3230-2	3	32	2	Screw-CARR
3230-16	1	19	4	Screw-CARR
3230-16	17	22	10	Screw-CARR
3230-16	20	11	2	Screw-CARR
3231-22	19	12	1	Bolt-CARR
3231-25	2	1	2	Screw-CARR
3231-25	6	27	2	Screw-CARR
3231-25	21	6	2	Screw-CARR
3232-5	12	19	2	Screw-CARR
3234-29	17	9	4	Screw-HHF
3235-22	2	7	5	Screw-HH
3235-22	3	10	2	Screw-HH
3235-22	7	32	2	Screw-HH
3243-5	7	18	4	Screw-Set
3247-2	8	10	1	Screw-Set
3250-29	17	4	4	Screw
3250-31	25	5:7	5	Screw
3253-3	2	26	3	Washer-Lock
3253-3	8	38	2	Washer-Lock
3253-3	25	8	1	Washer-Lock
3253-3	27	25	2	Washer-Lock
3253-4	17	43	4	Washer-Lock
3253-4	27	45	2	Washer-Lock
3253-4	28	16	1	Washer-Lock
3253-5	27	20	6	Washer-Lock
3253-17	25	5:8	5	Lockwasher
3256-3	11	8	4	Washer-Flat
3256-22	2	27	3	Washer-Flat
3256-22	2	29	1	Washer-Flat
3256-22	5	31	2	Washer-Flat
3256-22	25	7	1	Washer-Flat
3256-22	27	14	6	Washer-Flat
3256-23	1	3	12	Washer-Flat
3256-23	14	9	2	Washer-Flat
3256-23	17	12	17	Washer-Flat
3256-23	20	14	1	Washer-Flat
3256-24	2	18	5	Washer-Flat

*Not Illustrated

Toro Part Number Index (cont.)

Part No.	Page No.	Ref. No.	Qty.	Description
3256-24	3	12	16	Washer-Flat
3256-24	7	34	2	Washer-Flat
3256-24	12	5	4	Washer-Flat
3256-24	19	13	1	Washer-Flat
3256-24	21	8	3	Washer-Flat
3256-24	23	13	2	Washer-Flat
3256-24	24	14	2	Washer-Flat
3256-24	25	21	1	Washer-Flat
3256-24	27	40	2	Washer-Flat
3256-25	27	23	1	Washer-Flat
3256-26	12	14	2	Washer-Flat
3256-26	18	28	1	Washer-Flat
3256-26	24	6	2	Washer-Flat
3256-26	3	37	1	Washer-Flat
3256-28	12	10	2	Washer-Flat
3256-42	4	14	1	Washer-Flat
3256-55	23	11	1	Washer-Flat
3256-57	13	15	1	Washer-Flat
3256-57	18	25	1	Washer-Flat
3257-24	18	26	1	Key-Woodruff
3269-12	14	1:3	6	Rivet-Pop
3272-1	13	8	1	Pin-Cotter
3272-6	7	33	2	Pin-Cotter
3272-10	12	15	2	Pin-Cotter
3272-10	14	15	1	Pin-Cotter
3272-10	19	6	1	Pin-Cotter
3272-10	21	7	2	Pin-Cotter
3272-10	23	12	1	Pin-Cotter
3272-10	24	7	2	Pin-Cotter
3272-18	6	24	2	Pin-Cotter
3274-14	20	3	6	Screw-HSH
3274-31	14	2	4	Screw-HS
3290-221	3	22	2	Washer-Spring
3290-392	20	8	2	Screw-HH
3290-479	17	19	18	Fastener-Panel
3296-1	20	12	2	Locknut
3296-2	20	1	6	Nut-Lock
3296-6	21	22	1	Nut-Lock
3296-6	22	2	1	Nut-Lock
3296-6	23	4	1	Nut-Lock
3296-29	1	14	16	Nut-Lock
3296-29	2	10	3	Nut-Lock
3296-29	3	34	2	Nut-Lock
3296-29	4	16	4	Nut-Lock
3296-29	5	20	2	Nut-Lock
3296-29	6	7	2	Nut-Lock
3296-29	11	9	8	Nut-Lock
3296-29	14	8	3	Nut-Lock
3296-29	17	14	27	Nut-Lock
3296-29	18	12	7	Nut-Lock
3296-29	20	4	2	Nut-Lock
3296-29	21	16	2	Nut-Lock
3296-29	22	5	1	Nut-Lock
3296-29	27	2	4	Nut-Lock
3296-39	1	20	4	Nut-Lock
3296-39	2	3	10	Nut-Lock
3296-39	3	13	8	Nut-Lock
3296-39	4	6	4	Nut-Lock
3296-39	6	1	2	Nut-Lock
3296-39	12	3	15	Nut-Lock
3296-39	19	1	1	Nut-Lock
3296-39	21	2	6	Nut-Lock

*Not Illustrated

Toro Part Number Index (cont.)

Part No.	Page No.	Ref. No.	Qty.	Description
3296-39	23	16	1	Nut-Lock
3296-39	24	2	4	Nut-Lock
3296-39	25	12	1	Nut-Lock
3296-39	27	27	8	Nut-Lock
3296-42	2	30	1	Nut-Lock
3296-42	5	5	2	Nut-Lock
3296-42	13	13	2	Nut-Lock
3296-45	18	29	1	Nut
3296-48	12	9	2	Nut-Lock
3296-61	6	15	1	Nut-Hex
32115-15	2	43	1	Retainer
32103-22	28	9	4	Nut-Wing
32120-64	8	13	1	Ring-Retaining
32121-16	19	10	1	Pin-Roll
32121-79	12	11	2	Roll Pin
32128-30	18	18	1	Nut-Flange
32144-4	17	32	2	Screw-TAP
32144-20	17	30	4	Screw
32144-32	16	14	4	Screw-Plastic
32144-109	27	43	1	Screw-Taptite
32151-29	8	34	2	Ring-Ext. Snap
32152-4	27	16	6	Locknut
33103-020	5	12	1	Screw-HHF
33103-025	5	26	3	Screw-HHF
33104-020	27	46	2	Screw-HHF
33104-020	28	15	1	Screw-HHF
33113-008	27	26	2	Screw-HH
NN10277	28	*	1	30 Amp Fuse

