



42" Single Stage Snowthrower

Model No. 79365 – 8900001 & Up

Parts Catalog

ORDERING REPLACEMENT PARTS

To order replacement parts, please supply: the part number, the quantity, and the description of each part desired.

Contents

Description	Page	Description	Page
Mounting & Attachment Assembly	1	Toro Part Number Index	5-6
Chute & Rotation Assembly	2	Maintenance	7-9
Auger & Drive Assembly	3	Note:	
Mounting Assembly	4		

Accessories

Description	Model / Parts No.	Description	Model / Parts No.
--------------------	--------------------------	--------------------	--------------------------

Part Description Abbreviations

Part descriptions in this catalog may include the following abbreviations.

Abbreviation	Meaning	Abbreviation	Meaning
AR	as required	HWHTF	hex washer head thread forming
ASM	assembly	INC	incorporated
CARR	carriage	LH	left hand
DEG	degrees	PH	pan head
FH	flat head	PPH	Phillips pan head
GA	gauge	PTO	power take off
HF	hex flange	RH	right hand
HFV	hex flange washer	SFH	slotted fillister head
HH	hex head	SH	square head
HHF	hex head flange	SHWH	slotted hex washer head
HHST	hex head self tapping	SPH	slotted pan head
HJ	hex jam	STD	standard
HOC	height-of-cut	TAP	self tapping
HS	hex socket	TH	truss head
HSBH	hex socket button head	TTH	Torx truss head
HSFH	hex socket flat head	WH	wing head
HSH	hex socket head		
HWH	hex washer head		

Important Format Explanations

This catalog uses special formats to convey information in illustrations and parts lists. Specifically, one format is used in conjunction with service assemblies and another with quantities associated with reference numbers.

Service Assemblies

Parts within service assemblies have reference numbers in the form X:Y. X is the reference number of the service assembly and Y is a sequential number unique to each part within the service assembly.

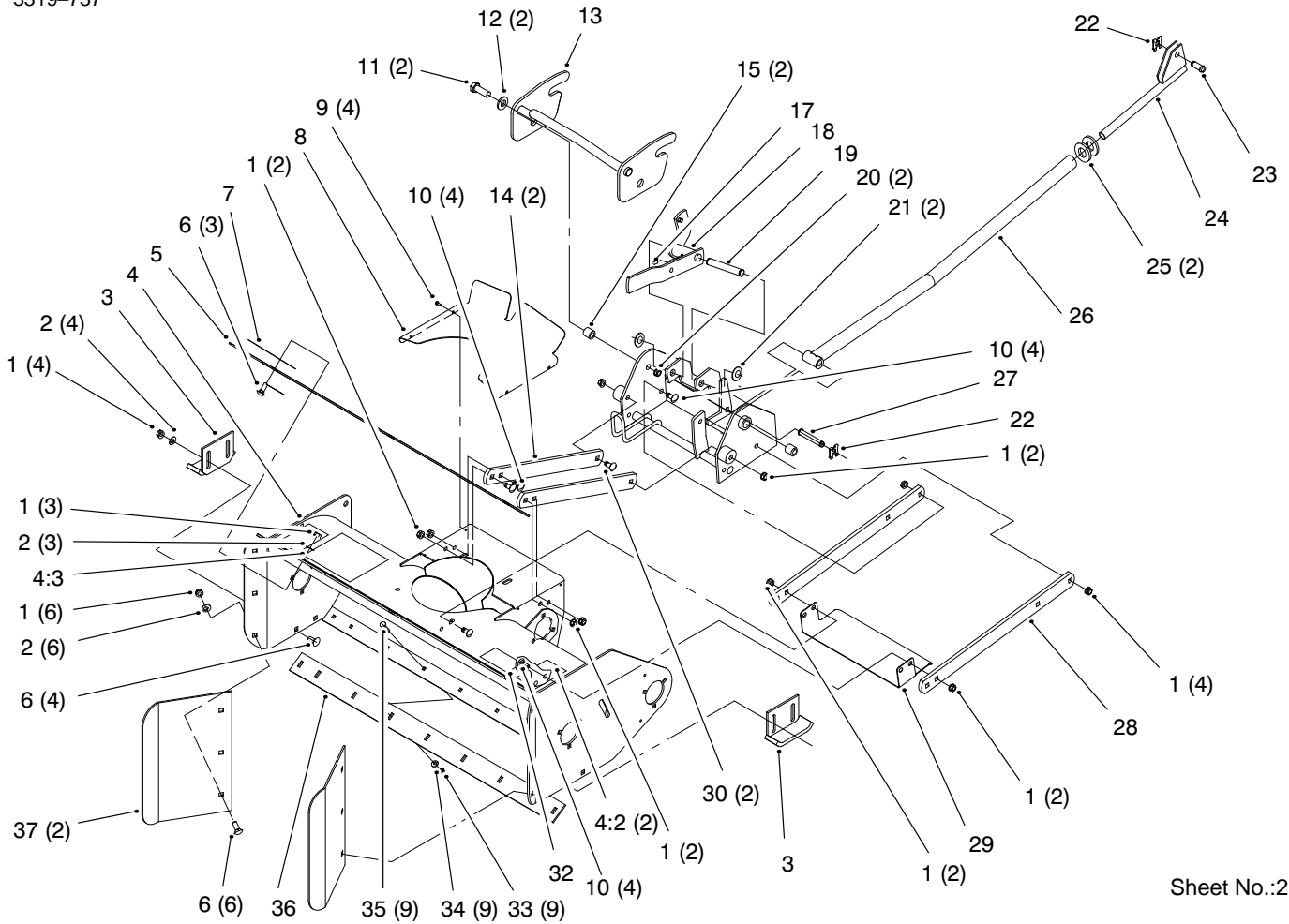
For example, a wheel assembly might be identified by reference number 6, the tire by 6:1, the valve by 6:2, and the wheel by 6:3. When you order the assembly identified by reference number 6, you receive all parts identified by reference numbers 6:1, 6:2, and 6:3. However, you may also order any part individually.

Reference numbers of this type appear in part lists and as callouts in illustrations.

Reference Numbers with Quantities

Illustrations may have a quantity in parentheses next to a reference number, in the form $X (Y)$. X is the reference number. Y in parentheses is the quantity of the part identified by the reference number.

For example, the illustration callout 4 (2) indicates that two parts are used in that instance.

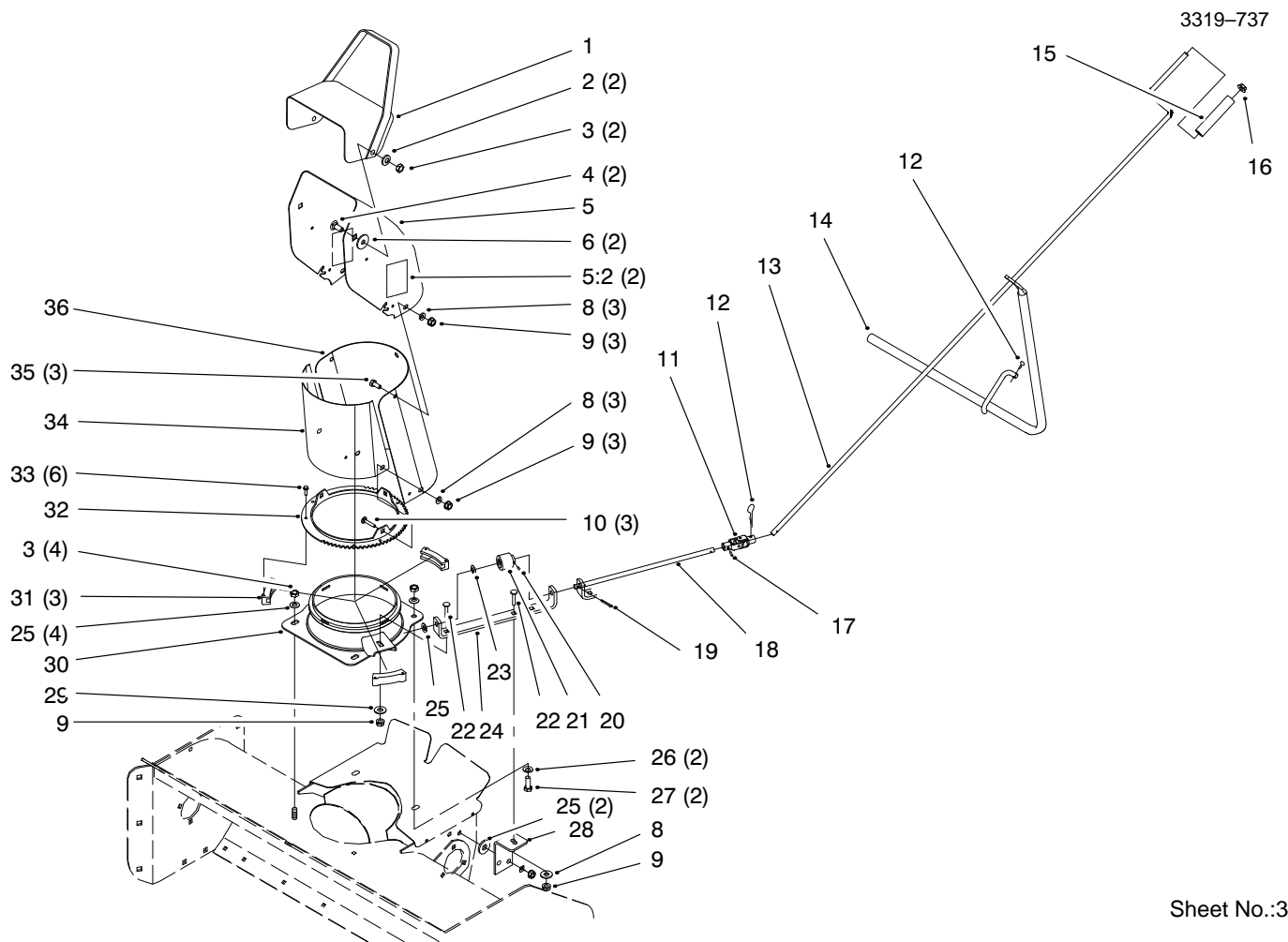


Sheet No.:2

Mounting & Attachment Assembly

Ref. No.	Part No.	Qty.	Description
1	3296-39	27	Nut-Lock
2	3256-24	13	Washer-Flat
3	93-1620-01	2	Skid
4	94-7859	1	Hsg/Decal ASM
4:2	63-2380	2	Decal-Danger
4:3	92-8652	1	Decal-Warning
5	93-1616-01	1	Plate-Extension
6	3231-2	13	Screw-CARR
7	92-8748	1	Decal-Attachment
8	95-4148	1	Shield-Snow
9	32144-1	4	Screw-HH
10	3231-3	12	Carriage Bolt
11	325-8	2	Screw-HH
12	3256-26	2	Washer-Flat
13	94-7706	1	Mounting ASM
14	94-7711	2	Bar-Lift
15	94-7813	2	Bushing-Pivot
16	3256-27	2	Washer-Flat
17	302-5	1	Fitting-Grease
18	94-7709	1	Idler Pivot ASM
19	94-7870	1	Shaft-Idler Pivot
20	3296-23	2	Nut-Lock
21	32151-62	2	Ring-Retaining
22	95-4064	2	Clip-Pin
23	98-1639	1	Pin-Clevis
24	94-7666	1	Rod ASM

Ref. No.	Part No.	Qty.	Description
25	3256-28	2	Washer-Flat
26	94-7663	1	Tube ASM
27	98-1640	1	Pin-Clevis
28	95-4299	2	Bar-Lift
29	95-4149	1	Shield-Lower Snow
30	3231-7	2	Screw-CARR
33	3296-42	9	Nut-Lock
34	3256-22	9	Washer-Flat
35	3229-25	9	Screw-CARR
36	79-6170-01	1	Scraper
37	93-1617-01	2	Plate-Extension

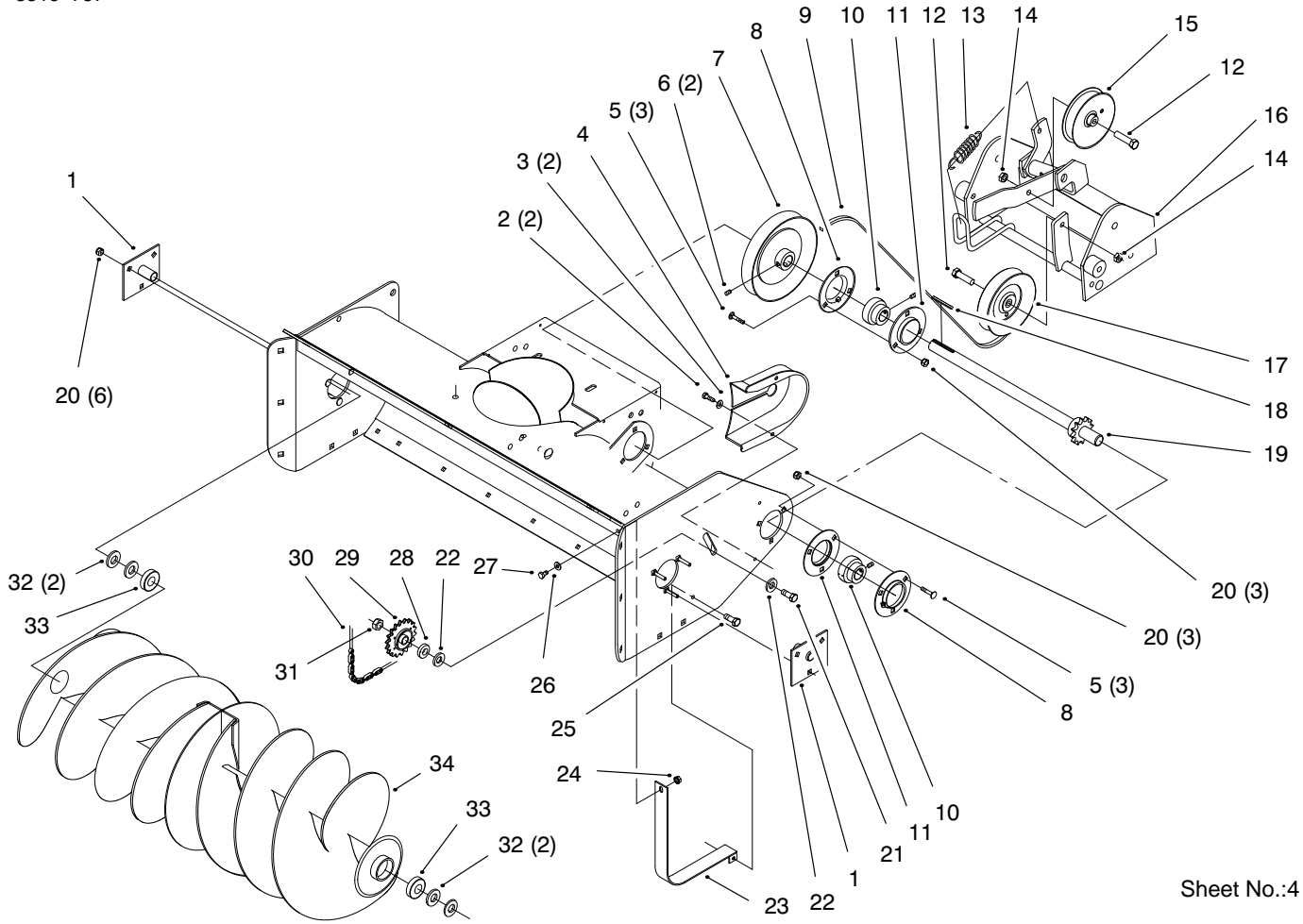


Sheet No.:3

Chute & Rotation Assembly

Ref. No.	Part No.	Qty.	Description
1	11-9349-01	1	Wa-Deflector
2	3290-340	2	Washer-Spring
3	3296-39	6	Nut-Lock
4	3231-2	2	Screw-CARR
5	94-1832	1	ASM
5:2	94-8078	2	Decal-Danger
6	20-4320	2	Washer-Rubber
8	3256-23	7	Washer-Flat
9	3296-29	8	Nut-Lock
10	3230-1	3	Bolt-CARR
11	94-2686	1	ASM-Joint
12	9335054	2	Hairpin
13	98-3090	1	Rod-Chute Control
14	94-7729	1	Wa-Support
15	40-8230	1	Grip-Control
16	93-3236	1	Nut-Push
17	32121-47	1	Pin-Roll
18	92-7046	1	Rod
19	3272-10	1	Pin-Cotter
20	32121-50	1	Pin-Roll
21	8-8600	1	Gear-Worm
22	3230-2	2	Screw-CARR
23	3290-212	1	Washer-Wave
24	98-3089	1	Bracket-Gear
25	3256-24	7	Washer-Flat

Ref. No.	Part No.	Qty.	Description
26	9202414	2	Washer-Flat
27	323-6	2	Screw-HH
28	98-3092	1	Crank Support
29	3290-238	1	Washer-Pyramid
30	95-4033	1	Adapter-Wa
31	25-5450	3	Retainer-Chute
32	25-5290	1	Ring-Swivel
33	27-0220	6	Screw-Special HWH
34	94-2997	1	Shield-Deflector
35	322-2	3	Screw-HH
36	26-1110-01	1	Extender-Chute



Sheet No.:4

Auger & Drive Assembly

Ref. No.	Part No.	Qty.	Description
1	93-1618-01	2	Wa-Support
2	9266714	2	Screw-HWHTF
3	3256-22	2	Washer-Flat
4	98-1631	1	Guard-Chain
5	3230-1	6	Bolt-CARR
6	3242-2	2	Screw Set-SH
7	94-7662	1	Pulley-Driven
8	110568	2	Flange-Plain w/O Zerk
9	95-3918	1	Belt-V
10	110569	2	Bearing & Collar
11	110567	2	Flange-Relube w/Zerk
12	323-10	2	Screw-HH
13	94-2460	1	Spring-Extension
14	3296-39	2	Nut-Lock
15	94-6236	1	Pulley-Idler
16	95-4297	1	Pulley Frame ASM
17	94-2447	1	Pulley-Idler
18	937159	1	Key
19	94-7869	1	Drive Shaft-Welded
20	3296-29	12	Nut-Lock
21	325-8	1	Screw-HH
22	3256-26	2	Washer-Flat
23	93-1619-01	1	Wa-Guard
24	32149-2	1	Nut-Hex Lock

Ref. No.	Part No.	Qty.	Description
25	1391	1	Screw
26	3256-2	1	Washer-Flat
27	321-3	1	Screw-HH
28	6417	1	Spacer-Flt
29	93-1614-01	1	Sprocket-Idler
30	98-5083	1	Chain
31	3296-23	1	Nut-Lock
32	3256-28	4	Washer-Flat
33	101480	2	Bearing-Ball
34	93-1615-01	1	Wa-Auger

Toro Part Number Index

Part No.	Page No.	Ref. No.	Qty.	Description
1391	3	25	1	Screw
6417	3	28	1	Spacer-Flt
101480	3	33	2	Bearing-Ball
110567	3	11	2	Flange-Relube w/Zerk
110568	3	8	2	Flange-Plain w/O Zerk
110569	3	10	2	Bearing & Collar
937159	3	18	1	Key
9202414	2	26	2	Washer-Flat
9266714	3	2	2	Screw-HWHTF
9335044	4	2	2	Hairpin
9335054	2	12	2	Hairpin
8-8600	2	21	1	Gear-Worm
11-9349-01	2	1	1	Wa-Deflector
20-4320	2	6	2	Washer-Rubber
25-5290	2	32	1	Ring-Swivel
25-5450	2	31	3	Retainer-Chute
26-1110-01	2	36	1	Extender-Chute
27-0220	2	33	6	Screw-Special HWH
40-8230	2	15	1	Grip-Control
63-2380	1	4:2	2	Decal-Danger
79-6170-01	1	36	1	Scraper
92-7046	2	18	1	Rod
92-8652	1	4:3	1	Decal-Warning
92-8748	1	7	1	Decal-Attachment
93-1614-01	3	29	1	Sprocket-Idler
93-1615-01	3	34	1	Wa-Auger
93-1616-01	1	5	1	Plate-Extension
93-1617-01	1	37	2	Plate-Extension
93-1618-01	3	1	2	Wa-Support
93-1619-01	3	23	1	Wa-Guard
93-1620-01	1	3	2	Skid
93-3236	2	16	1	Nut-Push
94-1832	2	5	1	ASM Chute/Decal(Service)
94-2447	3	17	1	Pulley-Idler
94-2460	3	13	1	Spring-Extension
94-2686	2	11	1	ASM-Joint
94-2997	2	34	1	Shield-Deflector
94-6236	3	15	1	Pulley-Idler
94-7662	3	7	1	Pulley-Driven
94-7663	1	26	1	Tube ASM
94-7666	1	24	1	Rod ASM
94-7706	1	13	1	Mounting ASM
94-7709	1	18	1	Idler Pivot ASM
94-7711	1	14	2	Bar-Lift
94-7729	2	14	1	Wa-Support
94-7813	1	15	2	Bushing-Pivot
94-7859	1	4	1	Hsg/Decal ASM
94-7869	3	19	1	Drive Shaft-Welded
94-7870	1	19	1	Shaft-Idler Pivot
94-8078	2	5:2	2	Decal-Danger
95-3918	3	9	1	Belt-V
95-4033	2	30	1	Adapter-Wa
95-4064	1	22	2	Clip-Pin
95-4148	1	8	1	Shield-Snow
95-4149	1	29	1	Shield-Lower Snow
95-4297	3	16	1	Pulley Frame ASM
95-4299	1	28	2	Bar-Lift
98-1631	3	4	1	Guard-Chain
98-1639	1	23	1	Pin-Clevis
98-1640	1	27	1	Pin-Clevis
98-3089	2	24	1	Bracket-Gear
98-3090	2	13	1	Rod-Chute Control

*Not Illustrated

Toro Part Number Index (cont.)

Part No.	Page No.	Ref. No.	Qty.	Description
98-3092	2	28	1	Crank Support
98-5083	3	30	1	Chain
283-2	4	1	2	Pin-Clevis
302-5	1	17	1	Fitting-Grease
321-3	3	27	1	Screw-HH
322-2	2	35	3	Screw-HH
323-6	2	27	2	Screw-HH
323-10	3	12	2	Screw-HH
325-8	1	11	2	Screw-HH
325-8	3	21	1	Screw-HH
3229-25	1	35	9	Screw-CARR
3230-1	2	10	3	Bolt-CARR
3230-1	3	5	6	Bolt-CARR
3230-2	2	22	2	Screw-CARR
3231-2	1	6	13	Screw-CARR
3231-2	2	4	2	Screw-CARR
3231-3	1	10	12	Carriage Bolt
3231-7	1	30	2	Screw-CARR
3242-2	3	6	2	Screw Set-SH
3256-2	3	26	1	Washer-Flat
3256-22	1	34	9	Washer-Flat
3256-22	3	3	2	Washer-Flat
3256-23	2	8	7	Washer-Flat
3256-24	1	2	13	Washer-Flat
3256-24	2	25	7	Washer-Flat
3256-26	1	12	2	Washer-Flat
3256-26	3	22	2	Washer-Flat
3256-27	1	16	2	Washer-Flat
3256-28	1	25	2	Washer-Flat
3256-28	3	32	4	Washer-Flat
3272-10	2	19	1	Pin-Cotter
3290-212	2	23	1	Washer-Wave
3290-238	2	29	1	Washer-Pyramid
3290-340	2	2	2	Washer-Spring
3296-23	1	20	2	Nut-Lock
3296-23	3	31	1	Nut-Lock
3296-29	2	9	8	Nut-Lock
3296-29	3	20	12	Nut-Lock
3296-39	1	1	27	Nut-Lock
3296-39	2	3	6	Nut-Lock
3296-39	3	14	2	Nut-Lock
3296-42	1	33	9	Nut-Lock
32121-47	2	17	1	Pin-Roll
32121-50	2	20	1	Pin-Roll
32144-1	1	9	4	Screw-HH
32149-2	3	24	1	Nut-Hex Lock
32151-62	1	21	2	Ring-Retaining

