



# **44" Two Stage Snowthrower**

**Model No. 79366 – 8900001 & Up**

---

## **Parts Catalog**

## ORDERING REPLACEMENT PARTS

To order replacement parts, please supply: the part number, the quantity, and the description of each part desired.

## Contents

Description	Page	Description	Page
Discharge Chute Assembly .....	1	Crank Assembly .....	5
Jack Shaft Assembly .....	2	Mounting Assembly .....	6
Worm Gear Assembly .....	3	Toro Part Number Index .....	7-9
Pulley Box Assembly .....	4	<b>Note:</b>	

## Accessories

Description	Model / Parts No.	Description	Model / Parts No.
-------------	-------------------	-------------	-------------------

## Part Description Abbreviations

Part descriptions in this catalog may include the following abbreviations.

Abbreviation	Meaning	Abbreviation	Meaning
AR .....	as required	HWHTF .....	hex washer head thread forming
ASM .....	assembly	INC .....	incorporated
CARR .....	carriage	LH .....	left hand
DEG .....	degrees	PH .....	pan head
FH .....	flat head	PPH .....	Phillips pan head
GA .....	gauge	PTO .....	power take off
HF .....	hex flange	RH .....	right hand
HFW .....	hex flange washer	SFH .....	slotted fillister head
HH .....	hex head	SH .....	square head
HHF .....	hex head flange	SHWH .....	slotted hex washer head
HHST .....	hex head self tapping	SPH .....	slotted pan head
HJ .....	hex jam	STD .....	standard
HOC .....	height-of-cut	TAP .....	self tapping
HS .....	hex socket	TH .....	truss head
HSBH .....	hex socket button head	TTH .....	Torx truss head
HSFH .....	hex socket flat head	WH .....	wing head
HSH .....	hex socket head		
HWH .....	hex washer head		

## Important Format Explanations

This catalog uses special formats to convey information in illustrations and parts lists. Specifically, one format is used in conjunction with service assemblies and another with quantities associated with reference numbers.

## Service Assemblies

Parts within service assemblies have reference numbers in the form  $X:Y$ .  $X$  is the reference number of the service assembly and  $Y$  is a sequential number unique to each part within the service assembly.

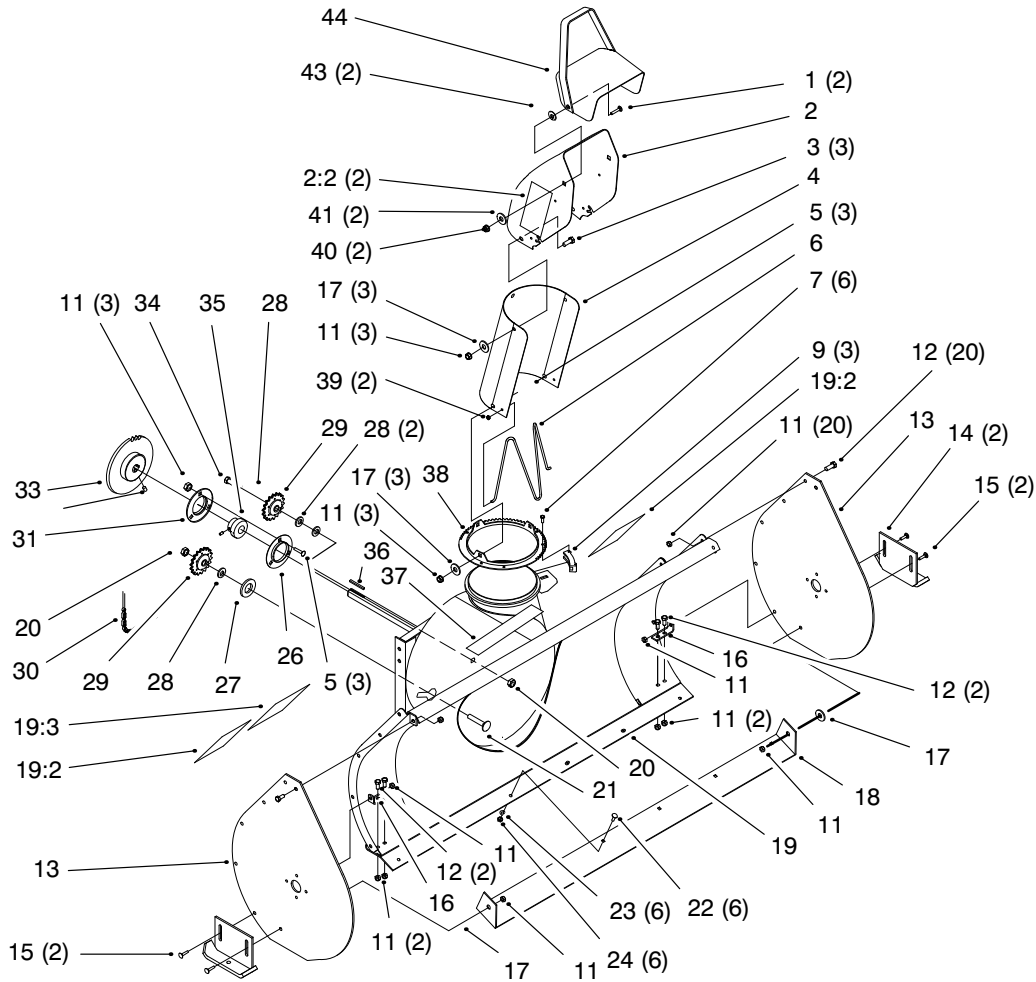
For example, a wheel assembly might be identified by reference number 6, the tire by 6:1, the valve by 6:2, and the wheel by 6:3. When you order the assembly identified by reference number 6, you receive all parts identified by reference numbers 6:1, 6:2, and 6:3. However, you may also order any part individually.

Reference numbers of this type appear in part lists and as callouts in illustrations.

## Reference Numbers with Quantities

Illustrations may have a quantity in parentheses next to a reference number, in the form  $X (Y)$ .  $X$  is the reference number.  $Y$  in parentheses is the quantity of the part identified by the reference number.

For example, the illustration callout 4 (2) indicates that two parts are used in that instance.

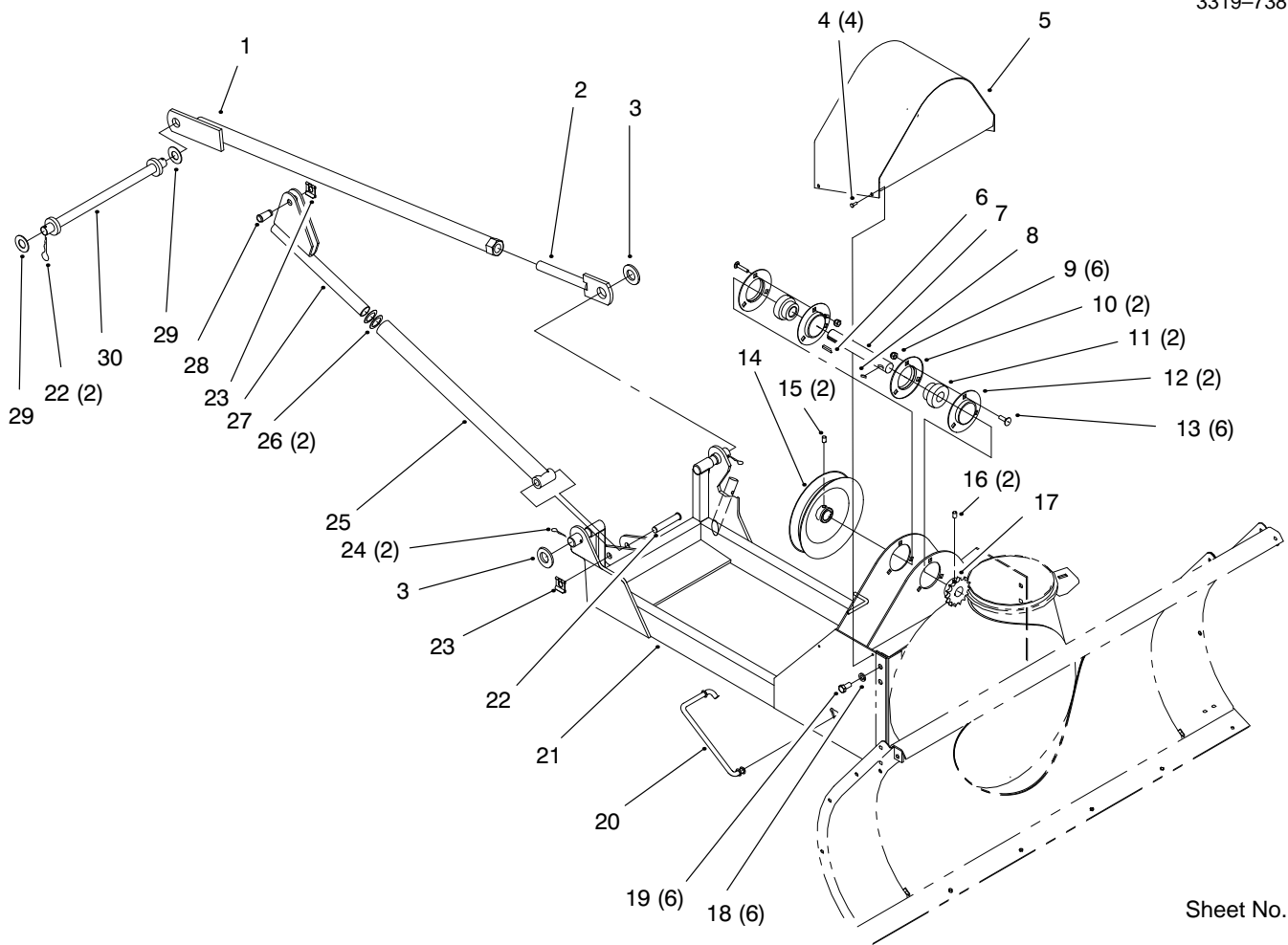


Sheet No.:2

## Discharge Chute Assembly

Ref. No.	Part No.	Qty.	Description
1	3231-2	2	Screw-CARR
2	94-1833-01	1	ASM-Chute/Decal
2:2	94-8079	2	Decal-Danger
3	322-2	3	Screw-HH
4	26-1110-01	1	Extender-Chute
5	3230-1	3	Bolt-CARR
6	12-2040	1	Wire-Guard
7	27-0220	6	Screw-Special HWH
9	25-5450	3	Retainer-Chute
11	3296-29	37	Nut-Lock
12	322-3	24	Screw-HH
13	57-3510	2	Plate-Side
14	78-0800	2	Wa-Skid
15	3230-2	4	Screw-CARR
16	57-9890	2	Bracket-Support
17	3256-23	5	Washer-Flat
18	79-6670	1	Blade-Scraper
19	98-3099	1	Auger Housing/Decal ASM
19:2	63-2380	2	Decal-Danger
19:3	92-8652	1	Decal-Warning
20	3296-23	2	Nut-Lock
21	3233-27	1	Screw-CARR
22	3229-25	6	Screw-CARR
23	3256-22	6	Washer-Flat
24	3296-42	6	Nut-Lock

Ref. No.	Part No.	Qty.	Description
26	76-2500	2	Flange-Plain w/O Zerk
27	3256-28	1	Washer-Flat
28	3256-26	3	Washer-Flat
29	93-1614-01	2	Sprocket-Idler
30	98-3098	1	Chain-Drive
31	119020	1	Flange-Relube
32	909546	2	Screw-Sqh
33	95-3867	1	Sprocket 38 Tooth
34	325-7	1	Screw-HH
35	110569	2	Bearing & Collar
36	6366	1	Key-Square
37	92-8748	1	Decal-Attachment
38	25-5290	1	Ring-Swivel
39	3290-326	2	Nut-Push
40	3296-39	2	Nut-Lock
41	20-4320	2	Washer-Rubber
43	3290-340	2	Washer-Spring
44	11-9349-01	1	Wa-Deflector

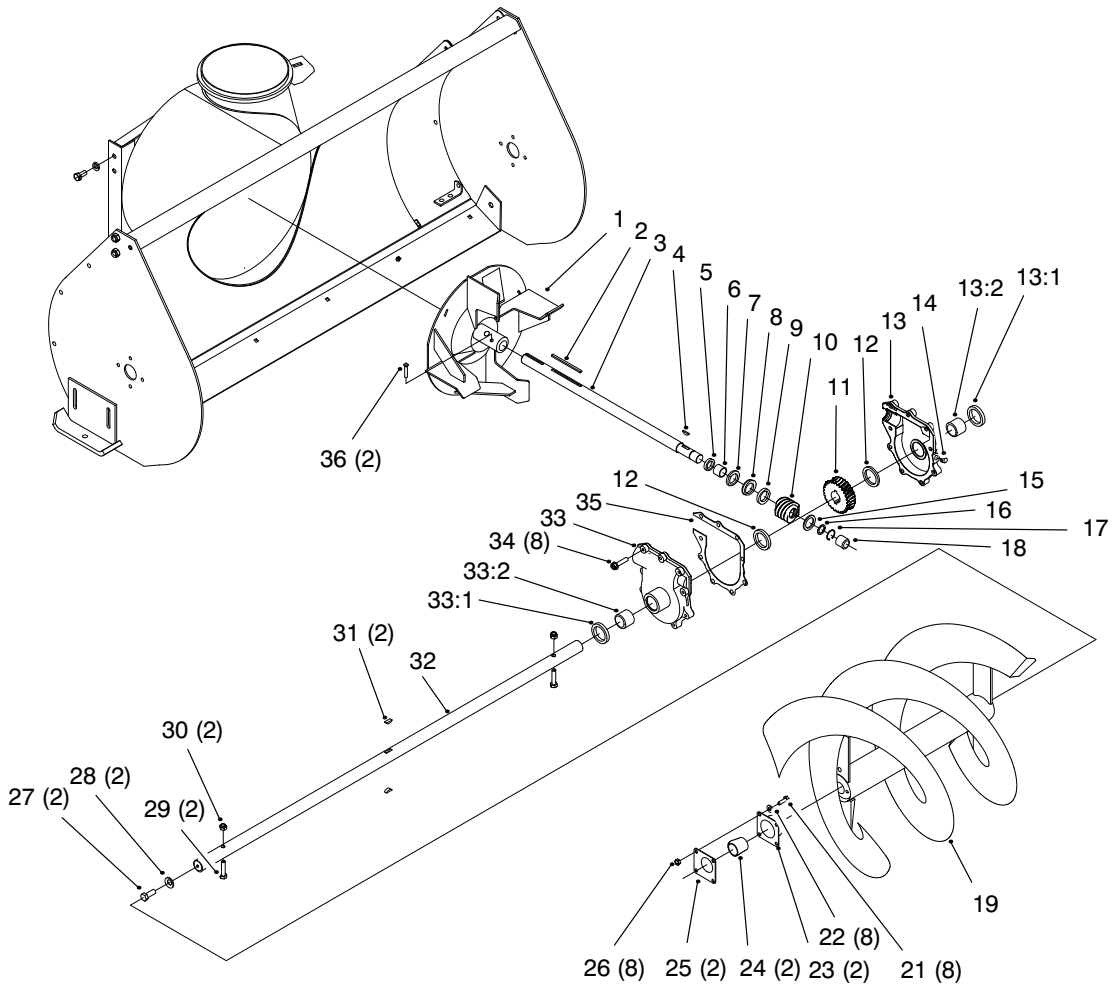


Sheet No.:3

## Jack Shaft Assembly

Ref. No.	Part No.	Qty.	Description
1	95-3999	2	Brace-Wa
2	95-4023	2	Adjuster Wa
3	3256-29	2	Washer-Flat
4	32105-8	4	Screw
5	95-3859	1	Cover-Pulley
6	6366	1	Key-Square
7	95-3836	1	Shaft-Jack
8	937221	1	Key-Woodruff
9	3296-29	6	Nut-Lock
10	76-2490	2	Flange-Relube
11	110569	2	Bearing & Collar
12	76-2500	2	Flange-Plain w/O Zerk
13	3230-1	6	Bolt-CARR
14	94-7841	1	Pulley-Driven
15	3242-2	2	Screw Set-SH
16	3242-6	2	Screw-Sqh Set
17	117338	1	Gear-Sprocket
18	3253-5	6	Washer-Lock
19	323-4	6	Screw-HH
20	95-3835	1	Link-Spring Tension
21	95-3848	1	Frame-Wa
22	98-1640	1	Pin-Clevis
23	95-4064	2	Clip-Pin
24	9335124	4	Hairpin
25	94-7672	1	Rod-Lift

Ref. No.	Part No.	Qty.	Description
26	3256-30	2	Washer-Flat
27	94-7671	1	Yoke-Wa
28	98-1639	1	Pin-Clevis
29	3256-28	2	Washer-Flat
30	95-3993	1	Link-Wa



Sheet No.:4

## Worm Gear Assembly

Ref. No.	Part No.	Qty.	Description
1	19-8890	1	Wa-Impeller
2	6-8590	1	Key-Square
3	19-8540	1	Shaft-Impeller
4	3257-23	1	Key-Woodruff
5	237-87	1	Seal-Oil
6	256-322	1	Bushing
7	252-78	1	Washer-Thrust
8	252-76	1	Bearing-Thrust
9	252-77	1	Washer-Thst.
10	5-7170	1	Gear-Worm
11	5-7180	1	Gear-Worm
12	252-71	2	Washer-Thrust
13	14-2459	1	ASM-Gearcase Half LH
13:1	7-0045	1	Seal-Oil
13:2	256-237	1	Bushing
14	281-1	1	Plug-Square Head Pipe
15	3-8664	1	Washer-Thst
16	5210	1	Washer-Shim
17	32120-72	1	Ring-Retaining
18	256-32	1	Bushing
19	57-3300	1	Wa-Auger RH
20	57-3370	1	Wa-Auger LH
21	321-4	8	Screw-HH
22	3256-22	8	Washer-Flat

Ref. No.	Part No.	Qty.	Description
23	20-0990	2	Bearing-Flange
24	20-0980	2	Bearing-Auger
25	20-1000	2	Bearing-Flange
26	3296-42	8	Nut-Lock
27	3235-22	2	Screw-HH
28	2844	2	Washer-Flat
29	322-14	2	Screw-HH
30	3296-29	2	Nut-Lock
31	3257-33	2	Key-#91 Woodruff
32	57-3500	1	Shaft-Auger
33	14-2449	1	ASM-Gearcase Half RH
33:1	7-0045	1	Seal-Oil
33:2	256-237	1	Bushing
34	32144-41	8	Screw-HWHTF
35	92-9839	1	Gasket-Housing
36	3242-6	2	Screw-SqH Set







# Toro Part Number Index

Part No.	Page No.	Ref. No.	Qty.	Description
2844	3	28	2	Washer-Flat
5210	3	16	1	Washer-Shim
6366	1	36	1	Key-Square
6366	2	6	1	Key-Square
110569	1	35	2	Bearing & Collar
110569	2	11	2	Bearing & Collar
111314	5	5	1	Lock Pin ASM
117338	2	17	1	Gear-Sprocket
119020	1	31	1	Flange-Relube
909546	1	32	2	Screw-Sqh
937221	2	8	1	Key-Woodruff
9335044	6	2	2	Hairpin
9335054	5	8	1	Hairpin
9335124	2	24	4	Hairpin
3-8664	3	15	1	Washer-Thst
5-7170	3	10	1	Gear-Worm
5-7180	3	11	1	Gear-Worm
6-8590	3	2	1	Key-Square
7-0045	3	13:1	1	Seal-Oil
7-0045	3	33:1	1	Seal-Oil
8-8600	5	9	1	Gear-Worm
11-9349-01	1	44	1	Wa-Deflector
12-2040	1	6	1	Wire-Guard
14-2449	3	33	1	ASM-Gearcase Half RH
14-2459	3	13	1	ASM-Gearcase Half LH
19-8540	3	3	1	Shaft-Impeller
19-8890	3	1	1	Wa-Impeller
20-0980	3	24	2	Bearing-Auger
20-0990	3	23	2	Bearing-Flange
20-1000	3	25	2	Bearing-Flange
20-4320	1	41	2	Washer-Rubber
25-5290	1	38	1	Ring-Swivel
25-5450	1	9	3	Retainer-Chute
26-1110-01	1	4	1	Extender-Chute
27-0220	1	7	6	Screw-Special HWH
40-8230	5	2	1	Grip-Control
57-3300	3	19	1	Wa-Auger RH
57-3370	3	20	1	Wa-Auger LH
57-3500	3	32	1	Shaft-Auger
57-3510	1	13	2	Plate-Side
57-9890	1	16	2	Bracket-Support
63-2380	1	19:2	2	Decal-Danger
63-2650	4	11	1	Screw-Shoulder
76-2490	2	10	2	Flange-Relube
76-2500	1	26	2	Flange-Plain w/O Zerk
76-2500	2	12	2	Flange-Plain w/O Zerk
76-9430	4	12	1	Spring-Extension
78-0800	1	14	2	Wa-Skid
79-6670	1	18	1	Blade-Scraper
92-7046	5	15	1	Rod
92-8652	1	19:3	1	Decal-Warning
92-8748	1	37	1	Decal-Attachment
92-9839	3	35	1	Gasket-Housing
93-1614-01	1	29	2	Sprocket-Idler
93-3236	5	1	1	Nut-Push
94-1833-01	1	2	1	ASM-Chute/Decal
94-2447	4	2	4	Pulley-Idler
94-2686	5	6	1	ASM-Joint
94-7671	2	27	1	Yoke-Wa
94-7672	2	25	1	Rod-Lift
94-7686	4	6	1	Pivot Rod ASM
94-7841	2	14	1	Pulley-Driven

\*Not Illustrated

# Toro Part Number Index (cont.)

Part No.	Page No.	Ref. No.	Qty.	Description
94-8079	1	2:2	2	Decal-Danger
95-3835	2	20	1	Link-Spring Tension
95-3836	2	7	1	Shaft-Jack
95-3848	2	21	1	Frame-Wa
95-3850	4	7	1	Pulley Box Wa
95-3851	4	15	1	Lever-Idler Wa
95-3852	4	10	1	Link Lever ASM
95-3859	2	5	1	Cover-Pulley
95-3864	5	4	1	Tube-Crank Support
95-3867	1	33	1	Sprocket 38 Tooth
95-3917	4	1	1	Belt-V
95-3984	4	4	2	Cover-Belt
95-3993	2	30	1	Link-Wa
95-3999	2	1	2	Brace-Wa
95-4023	2	2	2	Adjuster Wa
95-4064	2	23	2	Clip-Pin
98-1639	2	28	1	Pin-Clevis
98-1640	2	22	1	Pin-Clevis
98-3089	5	13	1	Bracket-Gear
98-3090	5	3	1	Rod-Chute Control
98-3094	5	17	1	Bracket-Crank Support
98-3098	1	30	1	Chain-Drive
98-3099	1	19	1	Auger Housing/Decal ASM
237-87	3	5	1	Seal-Oil
252-71	3	12	2	Washer-Thrust
252-76	3	8	1	Bearing-Thrust
252-77	3	9	1	Washer-Thst.
252-78	3	7	1	Washer-Thrust
256-32	3	18	1	Bushing
256-237	3	13:2	1	Bushing
256-237	3	33:2	1	Bushing
256-322	3	6	1	Bushing
281-1	3	14	1	Plug-Square Head Pipe
283-2	6	1	2	Pin-Clevis
302-5	4	14	1	Fitting-Grease
321-4	3	21	8	Screw-HH
322-2	1	3	3	Screw-HH
322-3	1	12	24	Screw-HH
322-14	3	29	2	Screw-HH
323-4	2	19	6	Screw-HH
323-5	5	20	2	Screw-HH
323-8	4	13	2	Screw-HH
325-7	1	34	1	Screw-HH
3229-25	1	22	6	Screw-CARR
3230-1	1	5	3	Bolt-CARR
3230-1	2	13	6	Bolt-CARR
3230-2	1	15	4	Screw-CARR
3230-2	5	12	2	Screw-CARR
3231-2	1	1	2	Screw-CARR
3233-27	1	21	1	Screw-CARR
3235-22	3	27	2	Screw-HH
3242-2	2	15	2	Screw Set-SH
3242-6	2	16	2	Screw-Sqh Set
3242-6	3	36	2	Screw-Sqh Set
3253-5	2	18	6	Washer-Lock
3253-21	5	21	2	Washer-Lock
3256-22	1	23	6	Washer-Flat
3256-22	3	22	8	Washer-Flat
3256-23	1	17	5	Washer-Flat
3256-23	4	9	1	Washer-Flat
3256-23	5	18	1	Washer-Flat
3256-24	5	14	3	Washer-Flat

\*Not Illustrated

# Toro Part Number Index (cont.)

Part No.	Page No.	Ref. No.	Qty.	Description
3256-26	1	28	3	Washer-Flat
3256-28	1	27	1	Washer-Flat
3256-28	2	29	2	Washer-Flat
3256-29	2	3	2	Washer-Flat
3256-30	2	26	2	Washer-Flat
3257-23	3	4	1	Key-Woodruff
3257-33	3	31	2	Key-#91 Woodruff
3272-10	5	16	1	Pin-Cotter
3290-212	5	11	1	Washer-Wave
3290-238	5	22	1	Washer-Pyramid
3290-326	1	39	2	Nut-Push
3290-340	1	43	2	Washer-Spring
3296-23	1	20	2	Nut-Lock
3296-29	1	11	37	Nut-Lock
3296-29	2	9	6	Nut-Lock
3296-29	3	30	2	Nut-Lock
3296-29	4	8	1	Nut-Lock
3296-29	5	19	2	Nut-Lock
3296-39	1	40	2	Nut-Lock
3296-42	1	24	6	Nut-Lock
3296-42	3	26	8	Nut-Lock
32105-8	2	4	4	Screw
32120-72	3	17	1	Ring-Retaining
32121-47	5	7	1	Pin-Roll
32121-50	5	10	1	Pin-Roll
32144-41	3	34	8	Screw-HWHTF
32144-70	4	5	1	Screw-TAP
32146-2	4	3	4	Nut-Hex Lock