



WHEEL HORSE[®]
Twin Bagger
for
825 Rear Engine Riders
Model No. 79080 – 8900001 & Up

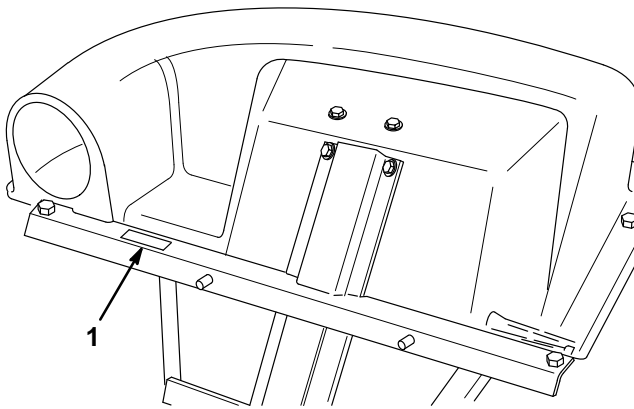
Operator's Manual

IMPORTANT: Read this manual carefully. It contains information about your safety and the safety of others. Also become familiar with the controls and their proper use before you operate the product.

Introduction

We want you to be completely satisfied with your new product, so feel free to contact your local Authorized Service Dealer for help with service, genuine replacement parts, or other information you may require.

Whenever you contact your Authorized Service Dealer or the factory, always know the model and serial numbers of your product. These numbers will help the Service Dealer or Service Representative provide exact information about your specific product. You will find the model and serial number plate located in a unique place on the product as shown below.



1. Model and Serial Number Plate

For your convenience, write the product model and serial numbers in the space below.

Model No: _____
Serial No. _____

The warning system in this manual identifies potential hazards and has special safety messages that help you and others avoid personal injury, even death. DANGER, WARNING and CAUTION are signal words used to identify the level of hazard. However, regardless of the hazard, be extremely careful.

DANGER signals an extreme hazard that will cause serious injury or death if the recommended precautions are not followed.

WARNING signals a hazard that may cause serious injury or death if the recommended precautions are not followed.

CAUTION signals a hazard that may cause minor or moderate injury if the recommended precautions are not followed.

Two other words are also used to highlight information. “Important” calls attention to special mechanical information and “Note” emphasizes general information worthy of special attention.

The left and right side of the machine is determined by sitting on the seat in the normal operator’s position.

Contents

	Page		Page
Safety and Instruction Decals	2	Maintenance	9
Installation	3	Inspecting the Bagger Attachment	9
Installing the Grass Catcher	4	Inspecting the Mower Blades	9
Removing the Grass Catcher	6	Caring for the Grass Bags	9
Operation	7	Cleaning the Bagger Attachment	9
Emptying the Grass Bags	7	Storing the Bagger Attachment	10
Clearing Obstructions From Bagger	7		
Operating and Bagging Tips	7		

Safety and Instruction Decals



Safety decals and instructions are easily visible to the operator and are located near any area of potential danger. Replace any decal that is damaged or lost.



ON CHUTE
(Part No. 54-9220)

Installation

DESCRIPTION	QTY.	USE
Side Plate	2	Assemble and install grass catcher
Muffler Shield	1	
Bolt (1/4"-20 x 5/8")	12	
Locknut (1/4"-20)	12	
Washer (1/4")	5	
V-bracket	1	
Washer (5/16")	2	
Locknut (3/8"-16)	2	
Bolt (5/16"-18 x 5/8")	4	
Locknut (5/16"-18)	4	
Duct	1	Install duct and discharge chute
Barbed Clip	1	
Spacer Fastener	1	
Retainer	1	
Discharge Chute	1	
Wing Nut (1/4"-20)	1	
Muffler Deflector	1	Install muffler deflector

Installing the Grass Catcher

Installing the Muffler Deflector

1. Remove the 4 screws from the muffler deflector and discard the deflector (Fig. 1).
2. Install the new muffler deflector using the screws removed in step 1. While installing, ensure that the muffler discharge opening is pointing to the left in the 10 o'clock position.

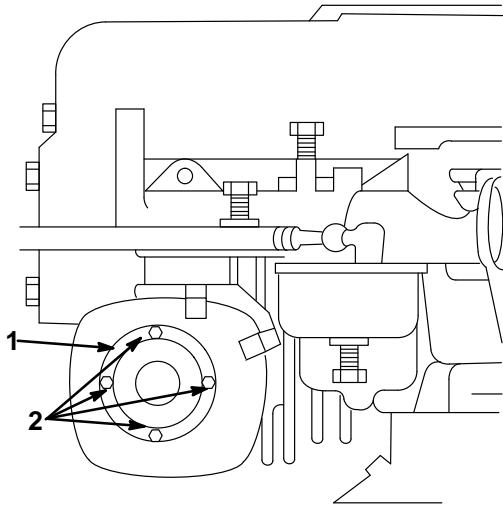


Figure 1

1 Muffler Deflector

2 Screws

Assembling and Installing the Grass Catcher

1. Install the muffler shield and the side plates to the bag cover using (12) 1/4"-20 x 5/8" bolts and locknuts (Fig. 2). Also, when installing the side plates, place a 1/4" washer between the bolts and the plastic bag cover.
Note: All bolt heads should be positioned on the outside.
2. Install the V-bracket studs into the holes in the bag cover and secure with (2) 3/8" washers and 3/8"-16 locknuts (Fig. 2).
3. Secure the V-bracket further with (4) 5/16"-18 x 5/8" bolts and locknuts (Fig. 2).

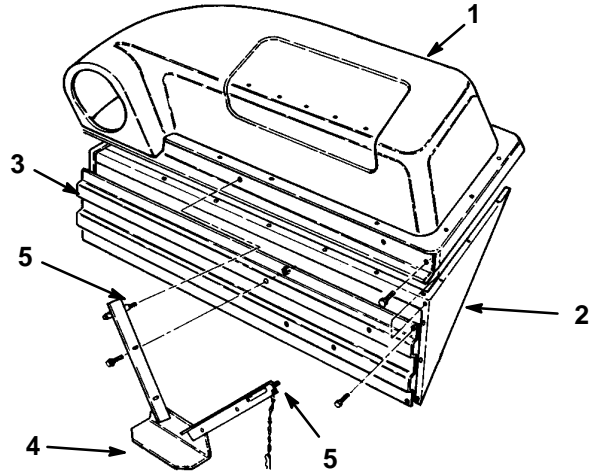


Figure 2

1 Plastic Bag Cover

4 V-bracket

2 Side Plate

5 V-bracket Stud

3 Muffler Shield

553

4. Insert the lower mounting pin on the V-bracket into the mounting hole in the hitch (Fig. 3).
5. Insert the upper mounting pins on the V-bracket into the holes in the mounting bracket on the rider and secure them with the hairpin cotters attached to the V-bracket (Fig. 3).

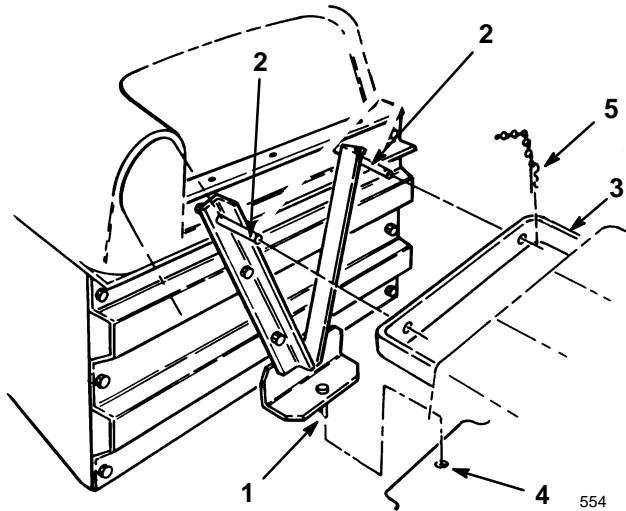


Figure 3

- | | |
|----------------------|-------------------------------------------------------|
| 1 Lower Mounting Pin | 5 Hairpin Cotter
(disassembled and only one shown) |
| 2 Upper Mounting Pin | |
| 3 Mounting Bracket | |
| 4 Hitch Hole | |

Assembling and Installing the Chute and Duct

1. Secure the retainer to the duct with the barbed clip and spacer fastener (Fig. 4).
2. Slide the duct over the end of the chute, aligning the retainer with the knob on the chute. Pull the retainer over the knob, securing the duct and chute (Fig. 4).

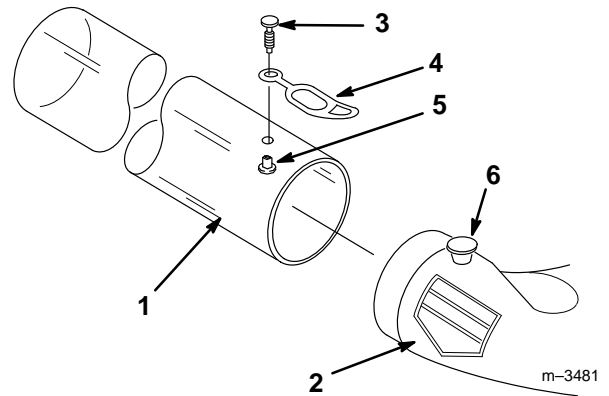


Figure 4

- | | |
|---------------|-------------------|
| 1 Duct | 4 Retainer |
| 2 Chute | 5 Spacer Fastener |
| 3 Barbed Clip | 6 Knob |

3. Slide the duct into the opening in the grass catcher.
4. Slide the chute under the deflector on the mower, inserting the front of the chute into the V-bracket inside of the mower housing (Fig. 5).
5. Install and secure the rear of the chute onto the mounting pin on the mower housing with a wing nut (Fig. 5).

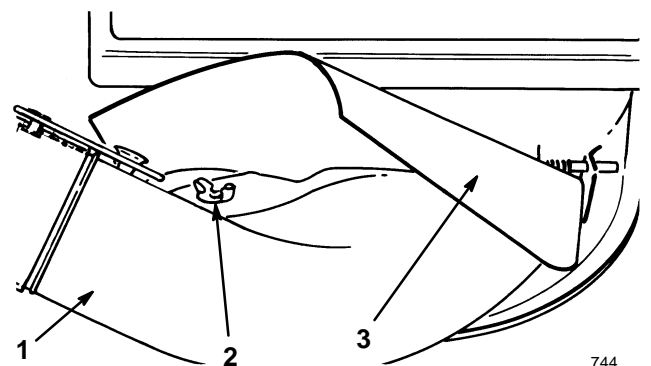


Figure 5

- | | |
|-----------------------------------------|-------------|
| 1 Chute | 3 Deflector |
| 2 Wing Nut (1/4"-20) on
Mounting Pin | |

Installing the Grass Bags

1. Slide the grass bag under the bag cover and position the front edge of the bag rod into the screen support bracket on the bag frame (Fig. 6).

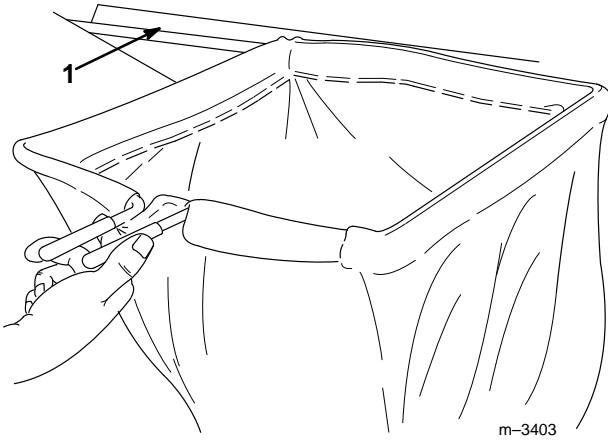


Figure 6

- 1 Screen Support Bracket

2. Lift the rear of the bag up to the bag cover. Squeeze the bag handles and allow them to snap into the bag frame brackets (Fig. 7).

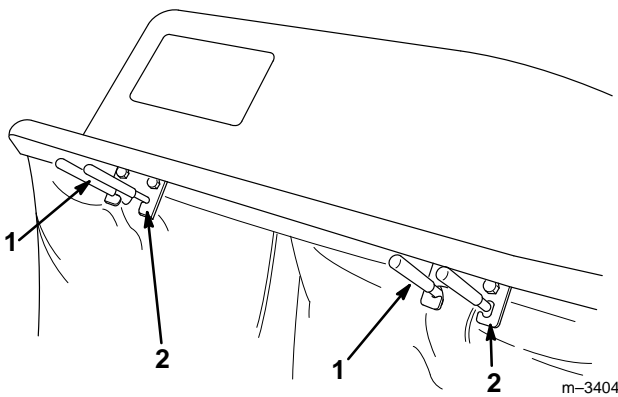


Figure 7

- 1 Bag Handle
- 2 Bag Frame Bracket

3. Repeat steps 1 and 2 for the other bag.

Removing the Grass Catcher

DANGER

POTENTIAL HAZARD

- Sometimes people are tempted to operate the mower without both grass bags installed on the Twin Bagger or with the discharge chute or duct removed. This exposes you and others to thrown debris and blade contact.

WHAT CAN HAPPEN

- You and others may die or be injured severely if you are hit by thrown debris or cut by the blade.

HOW TO AVOID THE HAZARD

- Always operate the mower with either the complete grass catcher mounted in place or use the mower to side discharge, making sure that the spring-loaded grass deflector is in the down position.

1. Disconnect the retainer on the duct from the knob on the chute and pull the duct free from the chute and grass bagger (Fig. 4)
2. Remove the wing nut securing the chute to the mower and pull the chute out of the mower (Fig. 5).
3. Remove the hairpin cotters securing the grass bagger to the mounting bracket on the mower. Rock the bagger backward, then pull it free of the mower hitch (Fig. 3).
4. Store all bagger parts in a convenient place.

Operation

CAUTION

To Avoid Personal Injury:

- **Become familiar with all operating and safety instructions in the operator's manual for your mower before using this attachment.**
- **Never remove the duct, bags, bag cover, or the discharge chute while the engine is running.**
- **Always shut the engine off before clearing an obstruction from the bagging system.**
- **Never do maintenance or repairs while the engine is running.**

Emptying the Grass Bags

Grass bags can weigh up to 90 lb (41kg) when full. Be careful when lifting or handling a grass bag that is full. To empty the grass bags:

1. Stop the mower, shift to NEUTRAL, and move the blade control to DISENGAGE (this stops the mower blades). Shut the engine off before you get off the mower.
2. Squeeze the bag handles and swing the bag down from the bag frame bracket.
3. Compress debris into the bags. With both hands, pull the bag out from under the bag cover. Empty the bag.
4. Repeat steps 2 and 3 for the other bag.
5. Slide the grass bag under the bag cover and position the front edge of the bag rod into the screen support bracket on the bag frame (Fig. 6).
6. Lift the rear of the bag up to the bag cover. Squeeze the bag handles and allow them to snap into the bag frame brackets (Fig. 7).
7. Repeat steps 5 and 6 for the other bag.

Clearing Obstructions From Bagger

1. Stop the mower and shift to NEUTRAL.
2. Raise the mower housing to the highest possible position and slap the side of the duct near the obstruction.

If the obstruction does not clear, complete the following:

3. Move the blade control to DISENGAGE (this stops the mower blades). Shut the engine off before you get off the mower.
4. Check the grass bags and empty them if they are full.
5. Remove and separate the duct and chute from the bag cover and mower. Using a stick or similar object, carefully remove and clear the obstruction from the mower, duct, chute, and the bag cover.
6. After you remove the obstruction, install the complete bagger and resume operation.

Operating and Bagging Tips

Size

Remember that the mower is longer and wider with this attachment installed. By turning too sharply in confined places you may damage the attachment.

Trimming

Always trim with the left side of the mower. Do not trim with the right side of the mower because you could damage the discharge chute and duct.

Cutting Height

Do not set the mower cutting height too low because long grass surrounding the mower can prevent air

from getting under the mower and entering the bagging system. If enough air doesn't get under the mower, the bagging system will plug.

Cutting Frequency

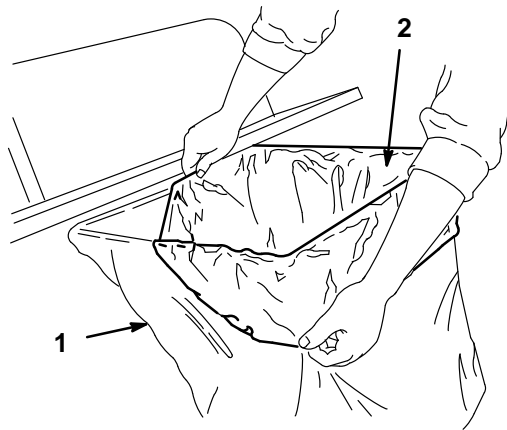
Cut the grass often, especially when it grows rapidly. You will have to cut your grass twice if it gets excessively long (refer to Bagging Long Grass, page 8).

Cutting Technique

For best lawn appearance, be sure to slightly overlap the mower into the previously cut area. This helps reduce the load on the engine and reduces the chance of plugging the bagging system.

Using Bags

Although not required, bags may be inserted into each cloth grass bag as a liner to collect clippings and make disposal more convenient (Fig. 8). If you use a bag liner, remove the filled grass bag and close the top of the liner. Then pull the liner out the grass bag or turn the bag upside down while holding the handle on the bottom of the grass bag (allows liner to slide out).



1378

Figure 8

1 Cloth grass bag

2 Bag (liner)

Bagging Speed

Most often you will bag with the tractor throttle in the FAST position and drive in 1st gear, which is the slowest ground speed. However, in extremely dry and dusty grass, you may want to lower throttle speed and shift gear selector to a higher gear to maintain ground

speed. The bagging system may plug if you drive too fast, causing the engine to slow down with the extra work load.

⚠ CAUTION

POTENTIAL HAZARD

- As the grass bags fill, extra weight is added to the back of the mower.

WHAT CAN HAPPEN

- If you stop and start suddenly on hills, you may lose steering control or the mower may tip.

HOW TO AVOID THE HAZARD

- Do not start or stop suddenly when going uphill or downhill. Avoid uphill starts.
- If you do stop the mower when going uphill, move the blade control to DISENGAGE (stop the mower blades). Then back down the hill using slow reverse speed.
- Do not change speeds or stop on slopes.

Bagging Long Grass

Excessively long grass is heavy and may not be propelled completely into the grass bags. If this happens, the discharge tube and elbow may plug. To avoid plugging the bagging system, mow the grass at a high height-of-cut, then lower the mower to your normal cutting height and repeat the bagging process.

Bagging Wet Grass

Always try to cut grass when it is dry because your lawn will have a neat appearance. If you must cut wet grass, use the conventional side discharge feature of the mower. Several hours later, when the clippings are dry, install the complete bagger attachment and vacuum up the grass clippings.

Signs of Plugging

As you are bagging, a small amount of grass clippings normally blow out the front of the mower. An excessive amount of clipping blow-out indicates that the bags are full or the system is plugged.

Maintenance

Inspecting the Bagger Attachment

Inspect the bagger attachment after the first ten hours of operation, and monthly thereafter.

1. Check the duct, chute, and the bag cover. Replace these parts if they are cracked or broken.
2. Tighten all nuts bolts and screws.
3. Inspect the grass bags for deterioration.

DANGER

POTENTIAL HAZARD

- The grass bag material may tear, wear, and eventually deteriorate.

WHAT CAN HAPPEN

- You or bystanders could be severely injured by flying debris or thrown objects that may pass through worn or deteriorated grass bags.

HOW TO AVOID THE HAZARD

- Frequently check the grass bags for holes, rips, wear, and other deterioration. Do not wash the grass bags. If the bag has deteriorated, install new grass bags supplied by the manufacturer of this bagger attachment.

Inspecting the Mower Blades

1. Inspect the mower blades regularly and whenever a blade strikes a foreign object.
2. If blades are badly worn or damaged, install new blades. Refer to your mower operator's manual for complete blade maintenance.

Caring for the Grass Bags

1. Washing the grass bags is not recommended.
2. To prevent rapid deterioration of bag material, store the bags so they dry completely after each use.

CAUTION

POTENTIAL HAZARD

- If you store grass clippings in the grass bags, under the right conditions, spontaneous combustion (a fire-generating process that occurs without an external source of ignition) could occur.

WHAT CAN HAPPEN

- If a fire occurs, property could be damaged and/or someone could be injured.

HOW TO AVOID THE HAZARD

- The cloth grass bags are not storage containers. Never store grass clippings and debris in the grass bags.

Cleaning the Bagger Attachment

1. After each use, remove and wash the inside and outside of the bag cover, duct, chute, and the underside of the mower, using water sprayed from a garden hose. Use a mild automotive detergent to remove stubborn dirt.

IMPORTANT: Do not wash the grass bags.

2. Make sure you remove matted grass from all parts.
3. After washing let all parts dry thoroughly.

Storing the Bagger Attachment

1. Clean the bagger attachment (refer to Cleaning the Bagger Attachment, page 9).
2. Inspect the bagger attachment for damage (refer to Inspecting the Bagger Attachment, page 9).
3. Make sure the grass bags are empty and thoroughly dry.
4. Store the bagger in a clean, dry place, out of direct sunlight. This protects the plastic parts and extends the life of the bagger. If you must store the bagger outside, cover it with a weatherproof cover.