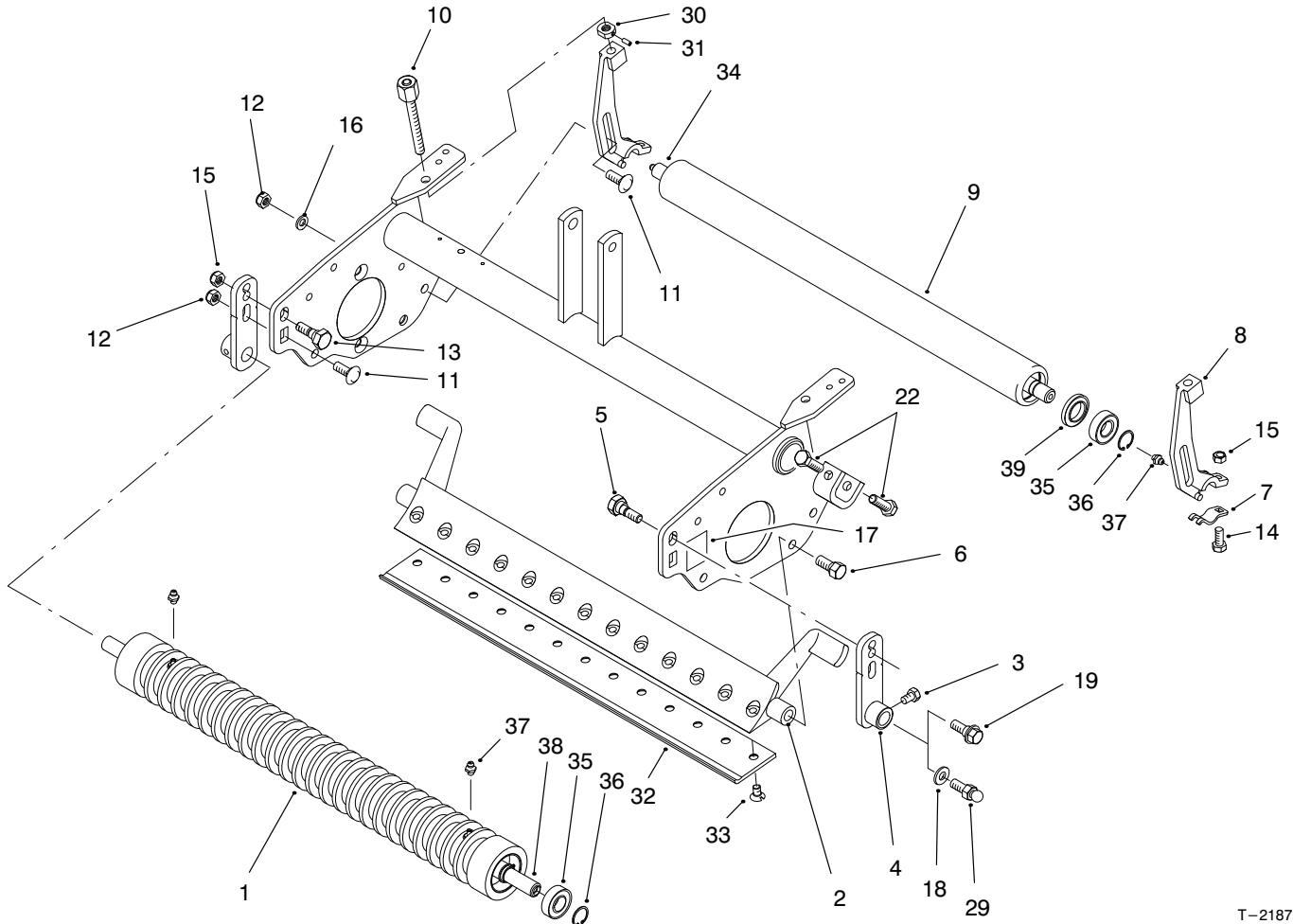




MODEL NO. 04480-80001 & UP
MODEL NO. 04481-80001 & UP

PARTS
CATALOG

8 & 11 BLADE 4 BOLT CUTTING UNIT
For Greensmaster® 3200



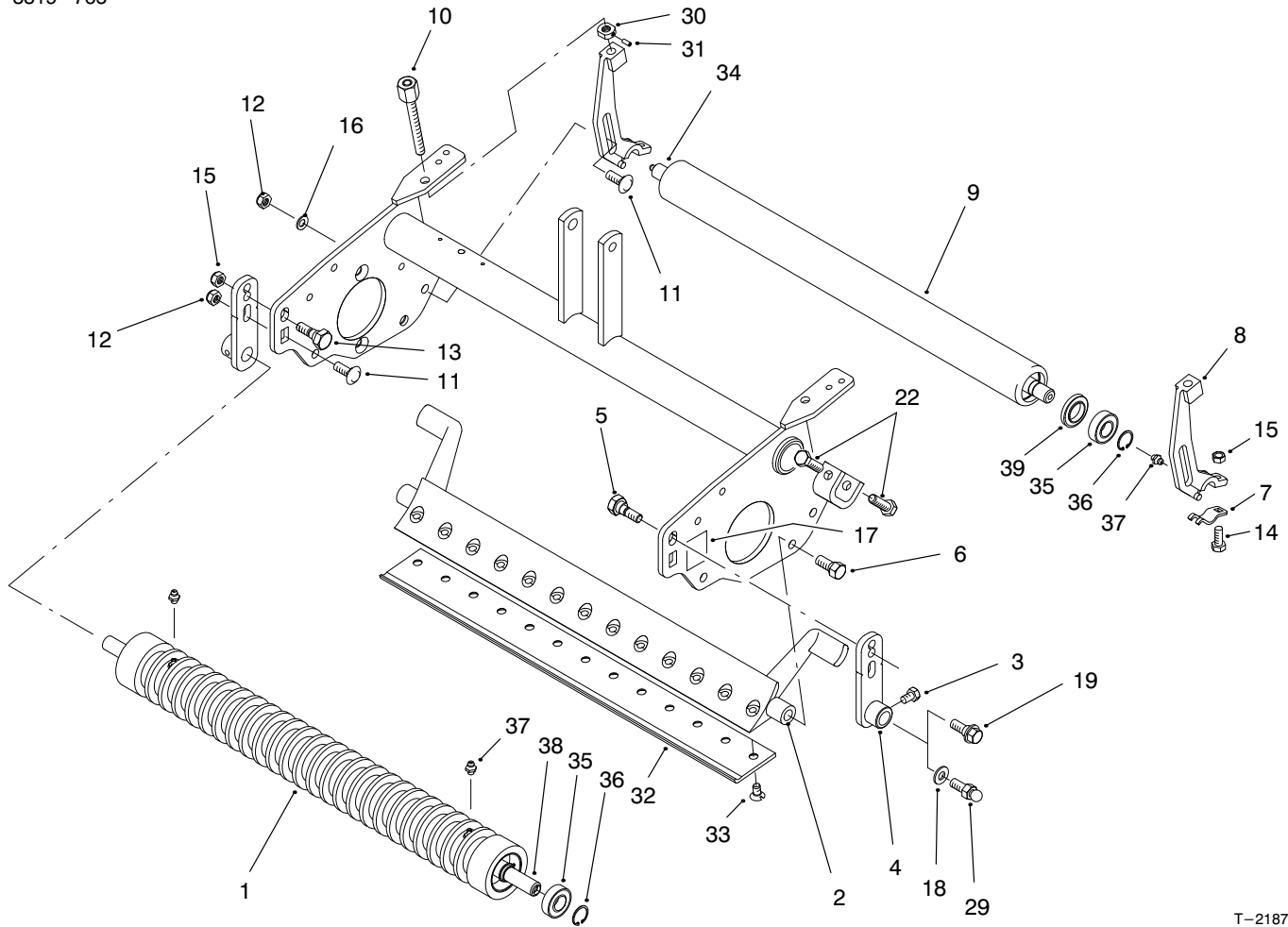
T-2187

ROLLERS & BEDBAR ASSEMBLY

Ref. No.	Part No.	Description	No. Used
1	94-6389	Roller - Wiehle	1
2	93-2576	Bedbar	1
3	33113-012	Screw - HH	2
4	94-8170	Bracket - Front	2
5	95-1618	Bolt - Shoulder	1
6	217-74	Bolt - Wheel	2
7	95-1637	Collar - Height-of-Cut	2
8	95-1638	Bracket - Height-of-Cut Adjustment	2
9	93-2467	Tube - Roller	1
10	95-1633	Height-of-Cut Adj. Assy.	2
11	33125-025	Screw - Carriage	4
12	33025-00	Nut - Lock	4
13	95-1617	Bolt - Eccentric	1
14	33114-020	Screw - Carriage	2
15	33024-00	Nut - Lock	4

Ref. No.	Part No.	Description	No. Used
16	3256-46	Washer - Flat	2
17	94-8169	Decal - Bracket Position	2
18	3254-6	Washer - Lock, Int.	2
19	93-2364	Bolt - Shoulder	2
29	94-2958	Stud - Ball (Used on old suspensions)	2
30	95-1632	Nut - Lock	2
31	3245-42	Screw - Set	2
32	93-4263	Knife - Bed Tournament	1
*	93-4262	Knife - Bed Microcut	1
*	93-4264	Knife - Bed Low 1/8"	1
*	94-6392	Knife - Bed High 3/16"	1
*	63-8600	Knife - Bed Fairway	1
33	57-4910	Screw - Special	13
34	93-2466	Shaft	1
35	93-2559	Bearing	4

* Not Illustrated
Note: Quantity is for 1 Cutting Unit.



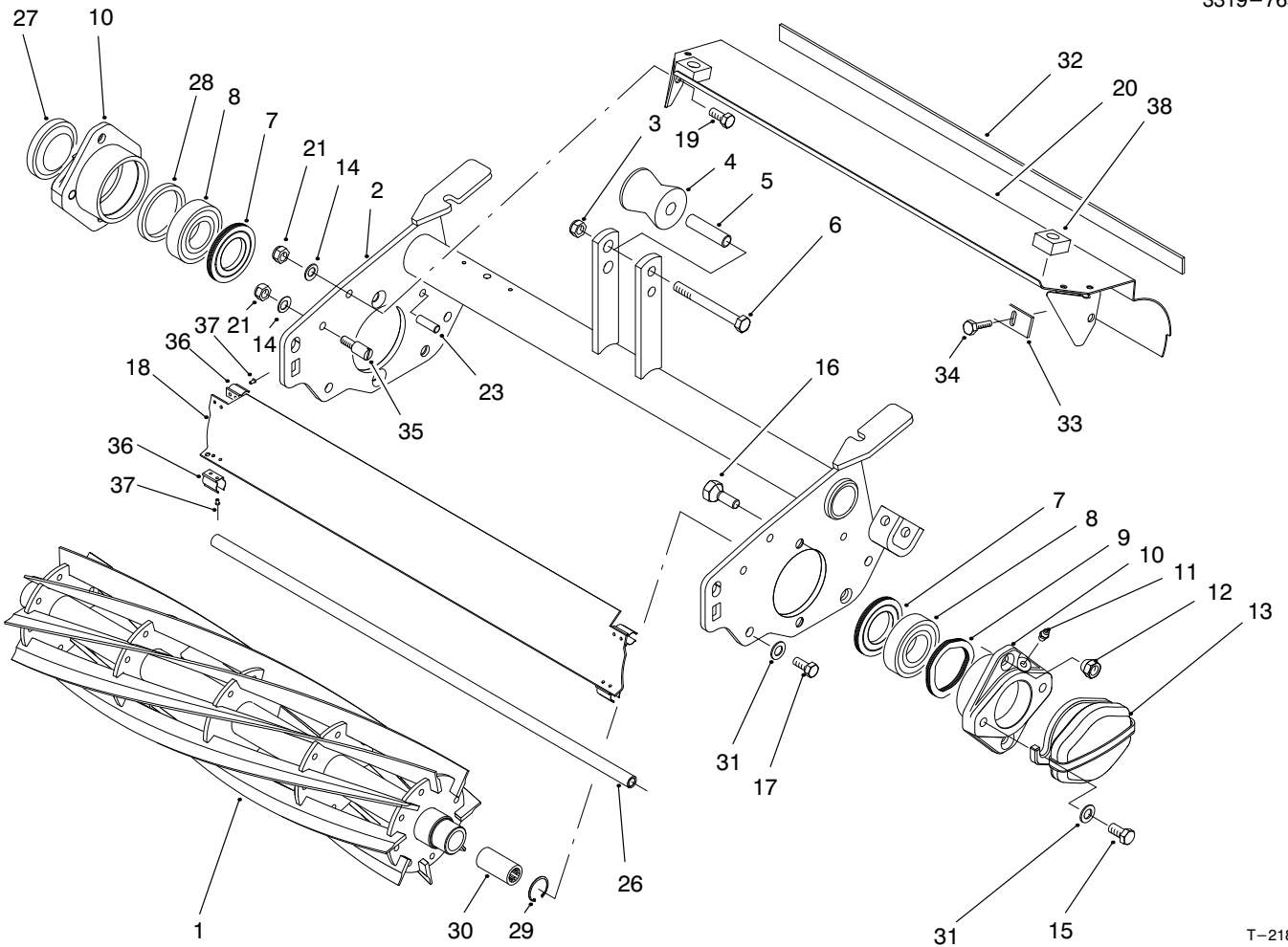
T-2187

ROLLERS & BEDBAR ASSEMBLY (Continued)

Ref. No.	Part No.	Description	No. Used
36	93-2525	Ring - Retaining	4
37	302-5	Fitting - Grease	4
38	93-2470	Shaft - Roller, Wiehle	1
39	98-2194	Sleeve - Grease	2

Ref. No.	Part No.	Description	No. Used
*	93-2465	Rear Roller Assembly (Incl. Ref. #9, 34-37 & 39)	1
*	94-8171	Wiehle Roller Assembly (Incl. Ref. #1 & 35-38)	1

* Not Illustrated
Note: Quantity is for 1 Cutting Unit.



T-2186

REEL & SHIELDS ASSEMBLY

Ref. No.	Part No.	Description	No. Used
1	94-4356	Reel WA. - 8 Blade	1
*	94-4357	Reel WA. - 11 Blade	1
2	95-1635	Frame	1
3	33025-00	Nut - Lock	1
4	93-2463	Roller - Lift	1
5	93-2464	Spacer - Roller	1
6	33115-080	Screw - HH	1
7	94-8908	Seal - Grease	2
8	93-2489	Bearing	2
9	94-4543	Spring - Flat Wire	1
10	94-4545	Housing - Bearing	2
11	302-5	Fitting - Grease	2
12	93-2454	Nut - Taper	4
13	95-1642	Weight - Counter	1
14	3256-74	Washer - Flat	4
15	93-2569	Screw - HHF	4
16	95-0745	Screw - TPRD	4
17	33115-20	Screw - HHF	2
18	98-0645	Front Shield Assembly (Incl. Ref. #36-37)	1

Ref. No.	Part No.	Description	No. Used
19	33114-020	Screw - HHF	2
20	98-0624	Rear Shield Assembly (Incl. Ref. #38)	1
21	33024-00	Nut - Lock	4
22	33114-030	Screw - HH	4
23	32121-123	Pin - Spring	2
26	98-2196	Rod - Shield	1
27	2410-30	Cap - Plastic	1
28	94-4544	Spacer - Bearing	1
29	32120-37	Ring - Retaining, Int.	1
30	94-4507	Coupler - Drive	2
31	3256-24	Washer	4
32	95-1636	Strip - Seal	1
33	36-7260	Bar - Cutoff	1
34	32144-73	Screw - Hex. Flange Hd.	5
35	98-2167	Bolt - Shoulder	2
36	94-1380	Clip - Spring Large	4
37	3269-33	Rivet - Pop	8
38	94-1392	Pad - Rubber	2

* Not Illustrated

Note: Quantity is for 1 Cutting Unit.

