



**Count on it.**

**Parts Catalog**

**ProPass 200 Top Dresser  
with Twin Spinner and Wireless Control**

Model No. 44751—Serial No. 316000001 and Up



# Ordering Replacement Parts

To order replacement parts, please supply the part number, the quantity, and the description of each part desired.

## Understanding Reference Numbers

Each identified part in an illustration has a reference number. The reference number for a part also appears in the parts list, along with other information about the part.

This catalog uses two special reference number formats, one to indicate parts in a service assembly and another to indicate the quantity of a given part in an illustration.

## Service Assembly Reference Numbers

Parts in service assemblies have reference numbers in the form a:b. The a represents the reference number of the entire service assembly and the b represents a sequential number unique to each part within the service assembly.

For example, a wheel assembly might be identified by reference number 6, the tire by 6:1, the valve by 6:2, and the wheel by 6:3. When you order the assembly identified by reference number 6, you receive all parts identified by reference numbers 6:1, 6:2, and 6:3. However, you may also order any part individually. Reference numbers of this type appear in illustration and in parts lists.

## Reference Numbers Indicating Quantity

In an illustration, if a reference number indicates more than one part, the reference number has the form nX y. The n represents the quantity of the part, the X is the multiplication symbol, and the y represents the reference number.

For example, in an illustration, the reference number 2X 37 means that two of the parts identified by reference number 37 are indicated.

# List of Abbreviations

**AR:** as required

**ASM:** assembly

**BBC:** blade brake control

**BHTF:** button head thread forming

**CARR:** carriage

**CCW:** counter clockwise

**CW:** clockwise

**DEG:** degrees

**DPA:** Dual Point Adjustment

**ECM:** electronic control module

**EXT:** external

**FH:** flat head

**GA:** gauge

**HD:** heavy-duty

**HF:** hex flange

**HH:** hex head

**HHF:** hex head flange

**HHFTF:** hex head flange thread forming

**HJ:** hex jam

**HLH:** hex lag head

**HOC:** height-of-cut

**HP:** high pressure

**HSBH:** hex socket button head

**HSFH:** hex socket flat head

**HSH:** hex socket head

**HWH:** hex washer head

**HWHTF:** hex washer head thread forming

**HYD:** hydraulic

**LH:** left hand

**LP:** low pressure

**LPG:** Liquefied Petroleum Gas

**NI:** nylon insert

**NPTF:** national pipe thread fine

**PFH:** phillips flat head

**PPH:** phillips pan head

**PPHTF:** phillips pan head thread forming

**PRH:** phillips round head

**PTH:** phillips truss head

**PTO:** power-take-off

**RH:** right hand

**ROPS:** roll-over protection system

**RRB:** rear roller brush

**SFH:** slotted fillister head

**SHH:** slotted hex head

**SHWH:** slotted hex washer head

**SPH:** slotted pan head

**SQH:** square head

**SRH:** slotted round head

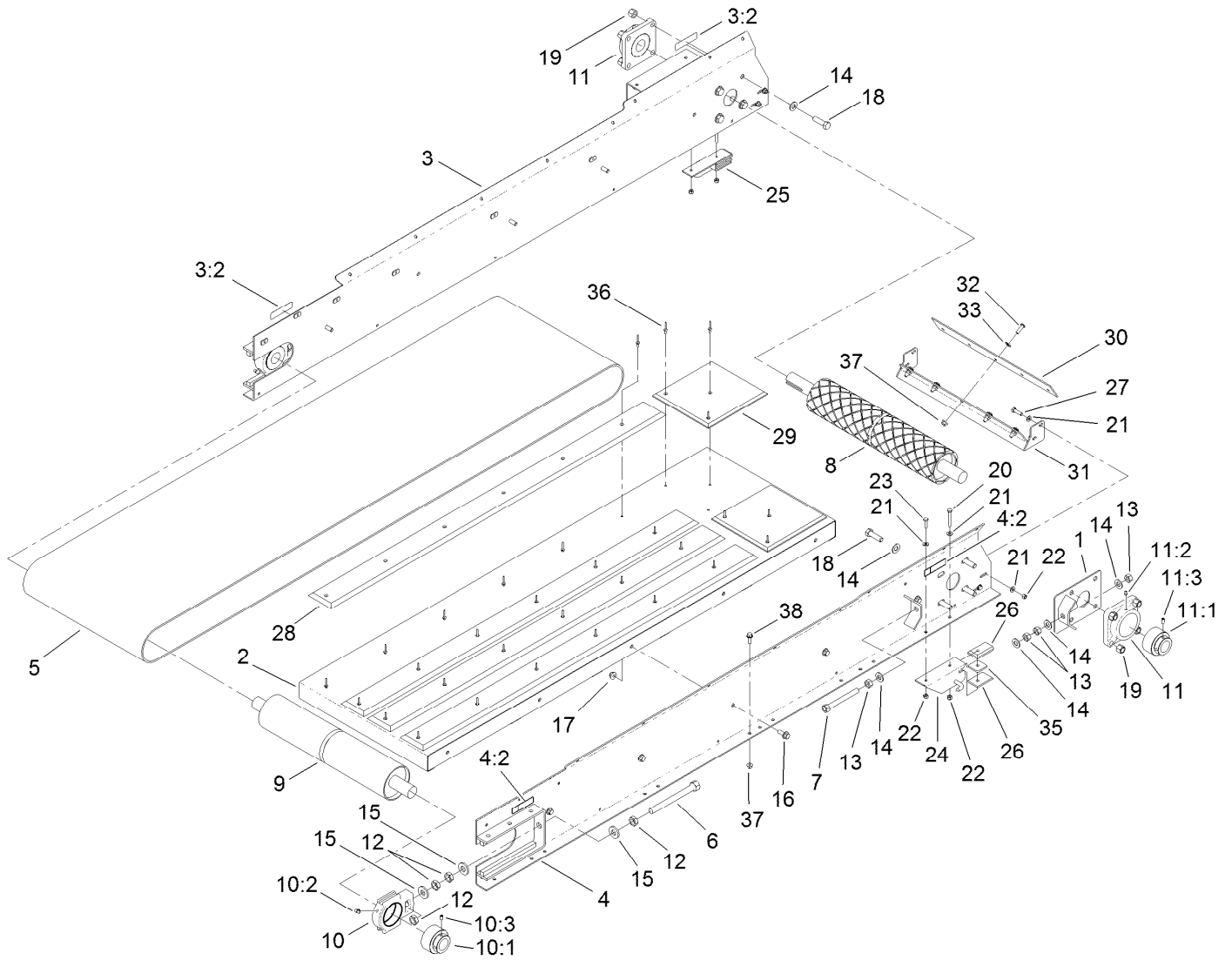
**STD:** standard

**TAP:** self tapping

**TTH:** torx truss head

# Contents

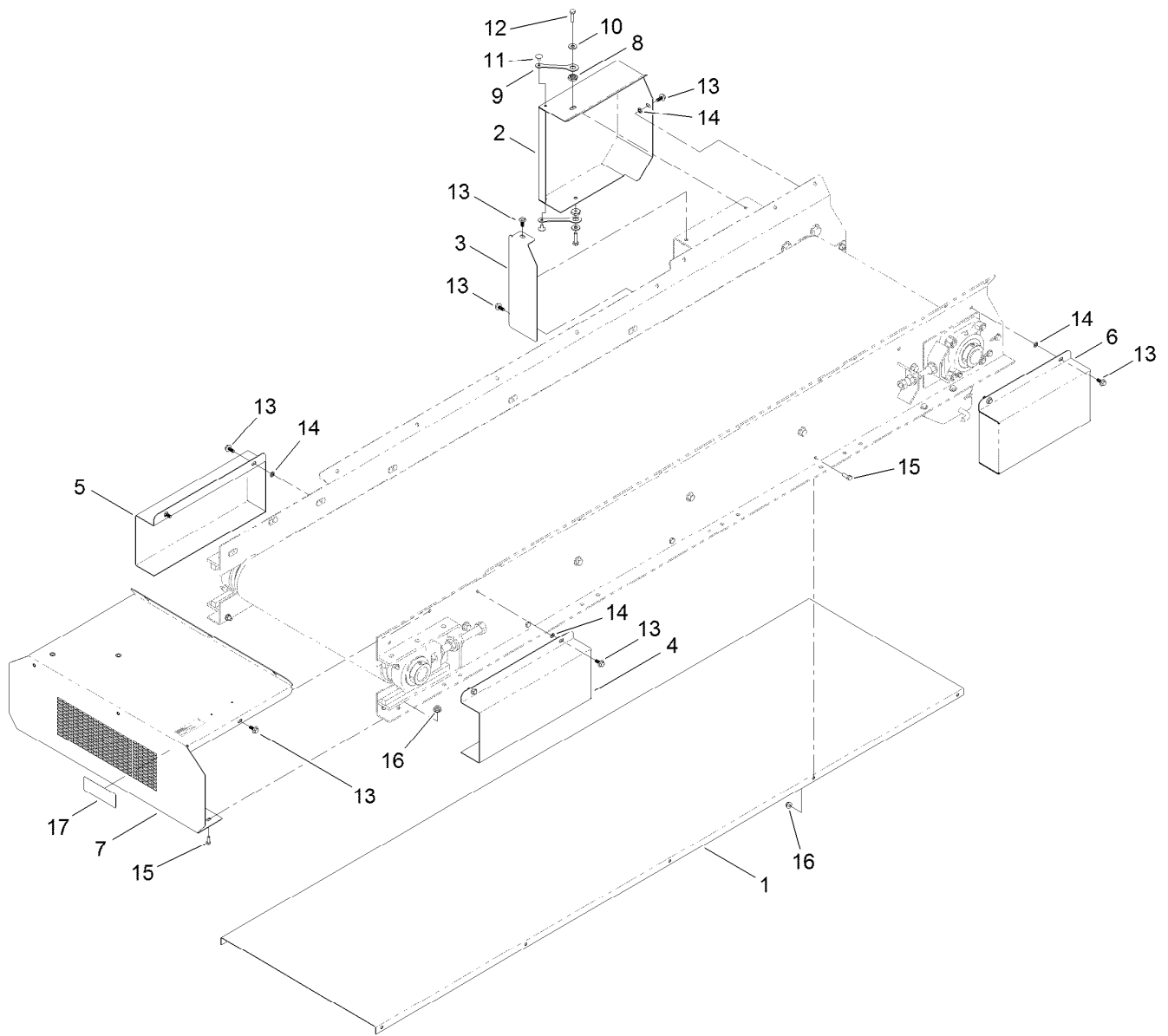
|   |    |
|---|----|
| Bed Assembly .....                            | 4  |
| Bed Cover Assembly .....                      | 6  |
| Belt Drive Assembly .....                     | 7  |
| Hopper Assembly .....                         | 8  |
| Tailgate Assembly .....                       | 9  |
| Hydraulic System Assembly .....               | 10 |
| Hydraulic Block Assembly No. T0000-7792 ..... | 12 |
| Twin Spinner Assembly .....                   | 13 |
| Hydraulic Motor Assembly No. T0001-9863 ..... | 15 |
| Twin Spinner Hydraulic Assembly .....         | 16 |
| Electrical Assembly .....                     | 17 |
| Attachments and Accessories .....             | 19 |



## Bed Assembly

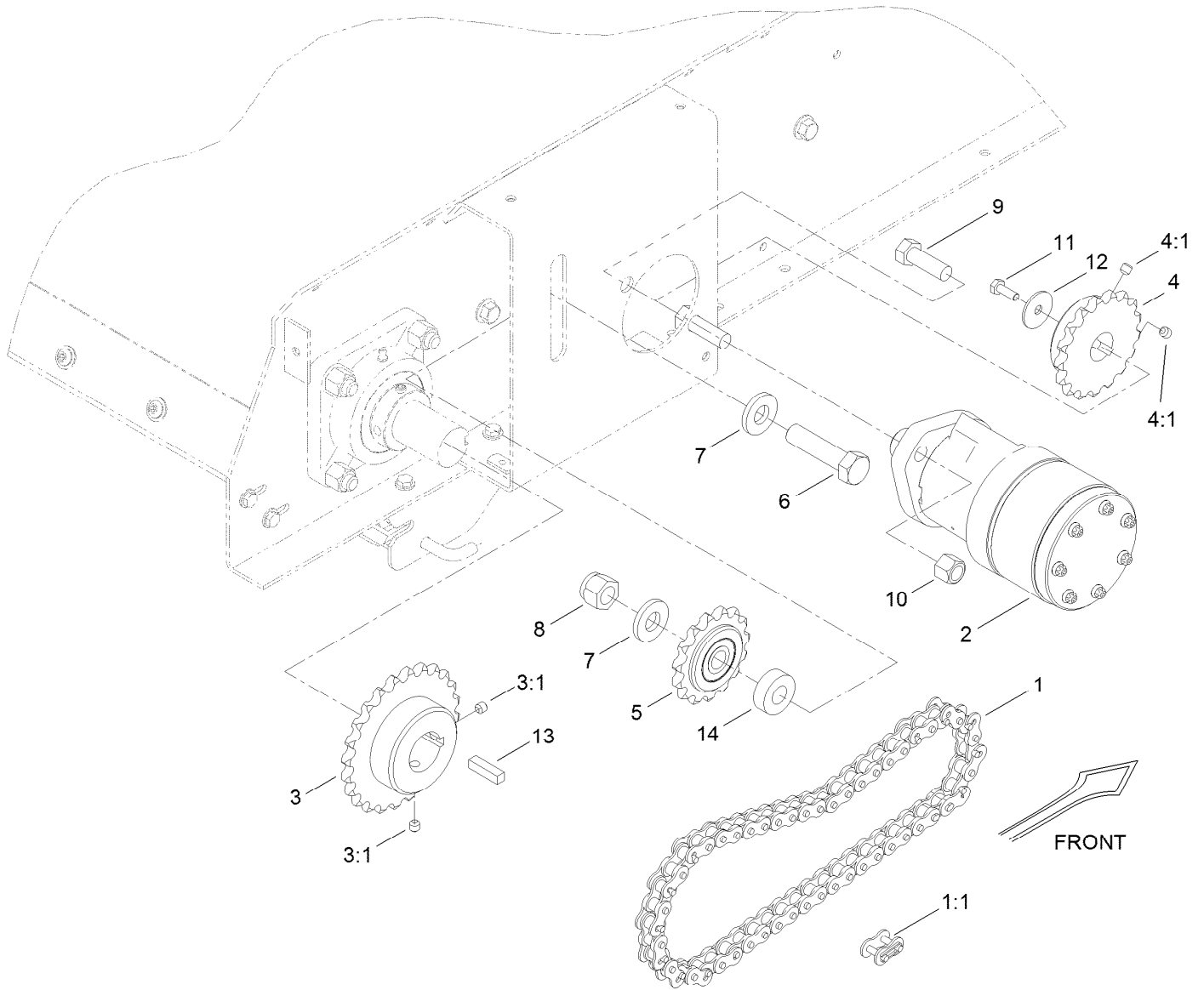
| Ref. | Part Number  | Qty. | Description             | Ref. | Part Number  | Qty. | Description       |
|------|--------------|------|-------------------------|------|--------------|------|-------------------|
| 1    | T36051675-01 | 1    | Plate-Alignment         | 14   | 3256-26      | 12   | Washer-Flat       |
| 2    | T36051600-01 | 1    | Bed-Conveyor            | 15   | 99-7667      | 6    | Washer-Flat       |
| 3    | 119-6797     | 1    | Right Conveyor Side ASM | 16   | 3234-42      | 10   | Screw-HHF         |
| 3:2  | 119-0217     | 2    | Decal-Danger            | 17   | 104-8301     | 10   | Nut-Flange, NI    |
| 4    | 119-6796     | 1    | Left Conveyor ASM       | 18   | 325-7        | 8    | Screw-HH          |
| 4:2  | 119-0217     | 2    | Decal-Danger            | 19   | 3296-23      | 8    | Nut-Lock, NI      |
| 5    | T60191015    | 1    | Belt-Conveyor           | 20   | 321-11       | 2    | Screw-HH          |
| 6    | T36051670-01 | 2    | Rod-Tensioner           | 21   | 3256-22      | 12   | Washer-Flat       |
| 7    | T36051660-01 | 1    | Rod-Alignment           | 22   | 3296-42      | 8    | Nut-Lock, NI      |
| 8    | T36051610    | 1    | Roller-Drive            | 23   | 321-6        | 2    | Screw-HH          |
| 9    | T36051620    | 1    | Roller-Idler            | 24   | T36051560-01 | 1    | Attachment-Left   |
| 10   | T60114107    | 2    | Take-Up Bearing ASM     | 25   | T36051570-01 | 1    | Attachment-Right  |
| 10:1 | 119-6902     | 1    | Bearing-Collar Lock     | 26   | T36051580    | 4    | Bar-Bearing       |
| 10:2 | 302-40       | 1    | Fitting-Grease, 90 DEG  | 27   | 321-4        | 4    | Screw-HH          |
| 10:3 | 3246-17      | 1    | Setscrew-HSH            | 28   | T36051690    | 4    | Slider-Belt       |
| 11   | T60116255    | 2    | 4-Bolt Bearing ASM      | 29   | T36051680    | 2    | Slider-Belt, Rear |
| 11:1 | 119-6902     | 1    | Bearing-Collar Lock     | 30   | T36051135    | 1    | Plate-Scraper     |
| 11:2 | 302-19       | 1    | Fitting-Grease          | 31   | T36051132-01 | 1    | Scraper           |
| 11:3 | 3246-17      | 1    | Setscrew-HSH            | 32   | 119-6903     | 5    | Screw-HSBH        |
| 12   | 3220-6       | 8    | Nut-Jam                 | 33   | 107-0279     | 5    | Washer            |
| 13   | 3217-9       | 4    | Nut-HH                  | 35   | T0000-2189   | 2    | Spacer-Attachment |





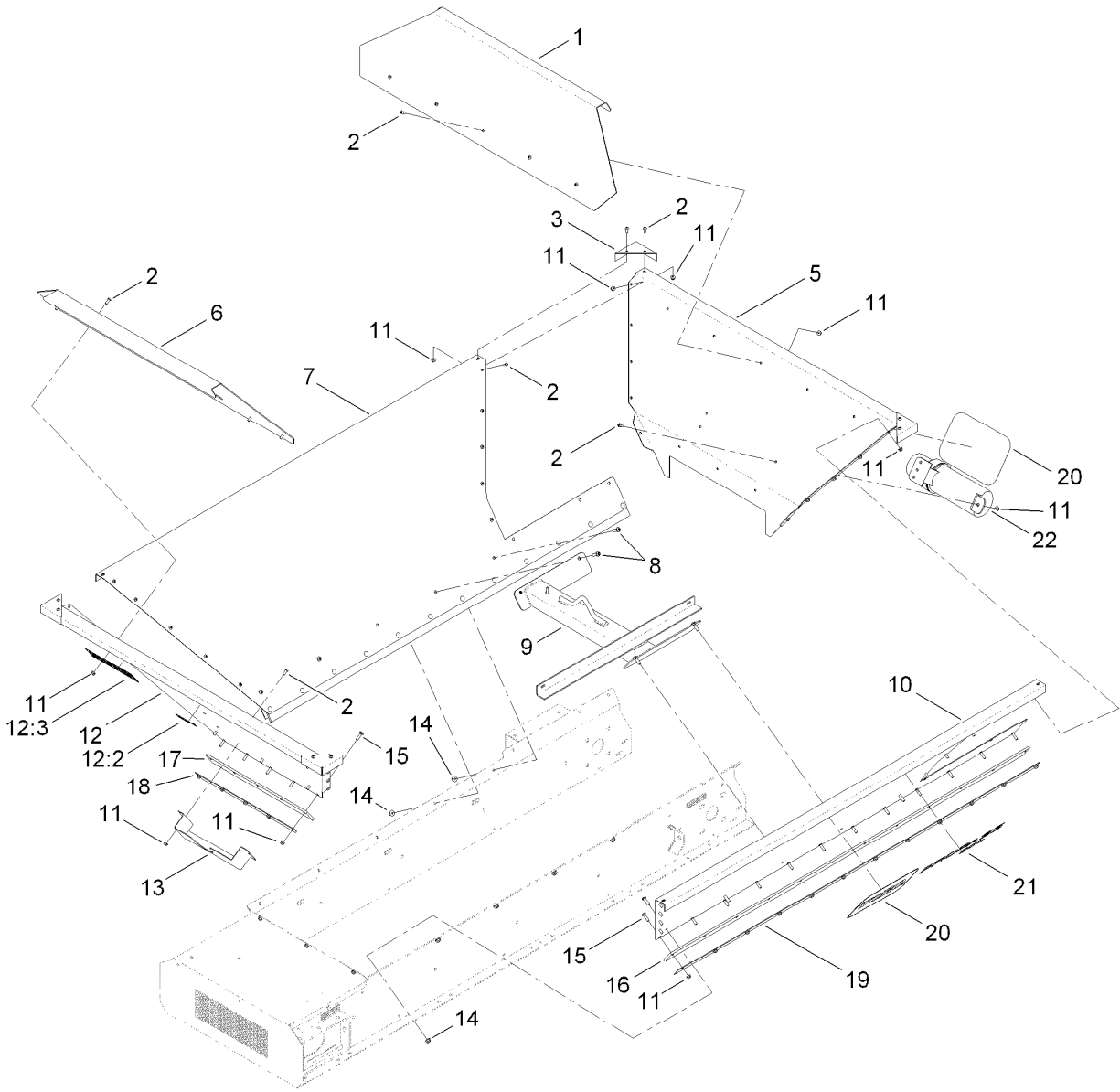
## Bed Cover Assembly

| <i>Ref.</i> | <i>Part Number</i> | <i>Qty.</i> | <i>Description</i> | <i>Ref.</i> | <i>Part Number</i> | <i>Qty.</i> | <i>Description</i> |
|-------------|--------------------|-------------|--------------------|-------------|--------------------|-------------|--------------------|
| 1           | T36051704          | 1           | Guard-Bottom       | 10          | 3256-2             | 2           | Washer-Flat        |
| 2           | T36051640-03       | 1           | Guard-Drive, RH    | 11          | 146489             | 2           | Rivet              |
| 3           | T36051645-01       | 1           | Cap-Guard          | 12          | 321-6              | 2           | Screw-HH           |
| 4           | T36051630-03       | 1           | Guard-Idler, LH    | 13          | 99-6810            | 12          | Screw-HHF          |
| 5           | T36051635-03       | 1           | Guard-Idler, RH    | 14          | 106-8737           | 7           | Nut-Retainer       |
| 6           | T36051650-03       | 1           | Guard-Drive, LH    | 15          | 321-4              | 12          | Screw-HH           |
| 7           | 130-8585-01        | 1           | Guard-Rinse        | 16          | 104-7201           | 12          | Nut-Flange, NI     |
| 8           | 119-0851           | 2           | Nut-Shoulder       | 17          | 119-6809           | 1           | Decal-Clean Out    |
| 9           | 117-8339           | 2           | Lanyard-3 Inch     |             |                    |             |                    |



## Belt Drive Assembly

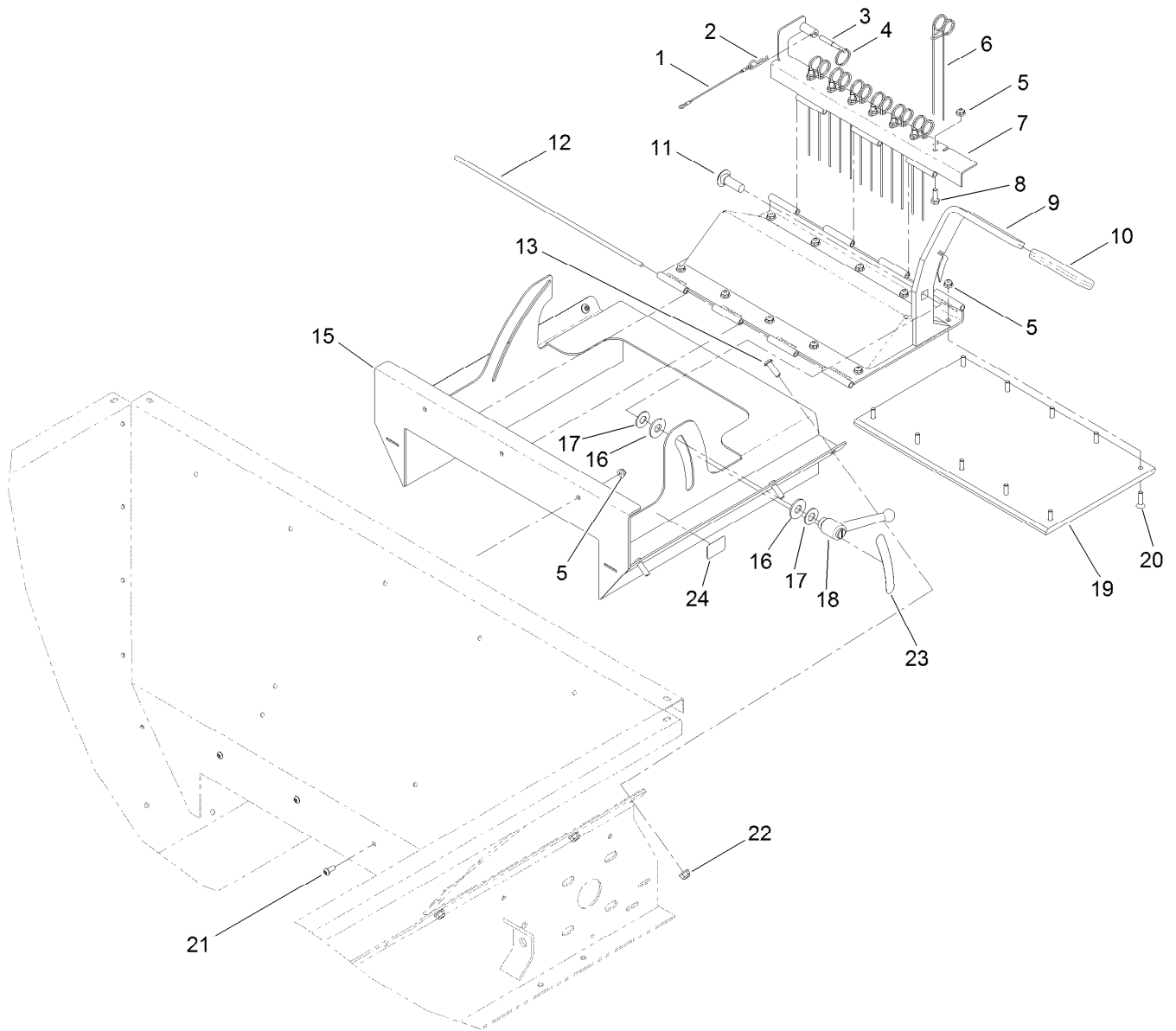
| <i>Ref.</i> | <i>Part Number</i> | <i>Qty.</i> | <i>Description</i>  | <i>Ref.</i> | <i>Part Number</i> | <i>Qty.</i> | <i>Description</i> |
|-------------|--------------------|-------------|---------------------|-------------|--------------------|-------------|--------------------|
| 1           | T0000-7790         | 1           | Chain-Drive, #50    | 7           | 99-7667            | 2           | Washer-Flat        |
| 1:1         | T60151066          | 1           | Link-Connector, #50 | 8           | 3296-53            | 1           | Nut-Lock, NI       |
| 2           | T56011000          | 1           | HYD Motor ASM       | 9           | 325-6              | 2           | Screw-HH           |
| 3           | T0000-6840         | 1           | Sprocket            | 10          | 3296-23            | 2           | Nut-Lock, NI       |
| 3:1         | 3246-2             | 2           | Screw-Set, HSH      | 11          | 321-4              | 1           | Screw-HH           |
| 4           | T60133080          | 1           | Sprocket            | 12          | 3256-57            | 1           | Washer-Flat        |
| 4:1         | 3246-2             | 2           | Screw-Set, HSH      | 13          | T36051810          | 1           | Key-Drive          |
| 5           | T60134080          | 1           | Sprocket-Idler      | 14          | 119-6905           | 1           | Spacer             |
| 6           | 327-8              | 1           | Screw-HH            |             |                    |             |                    |



## Hopper Assembly

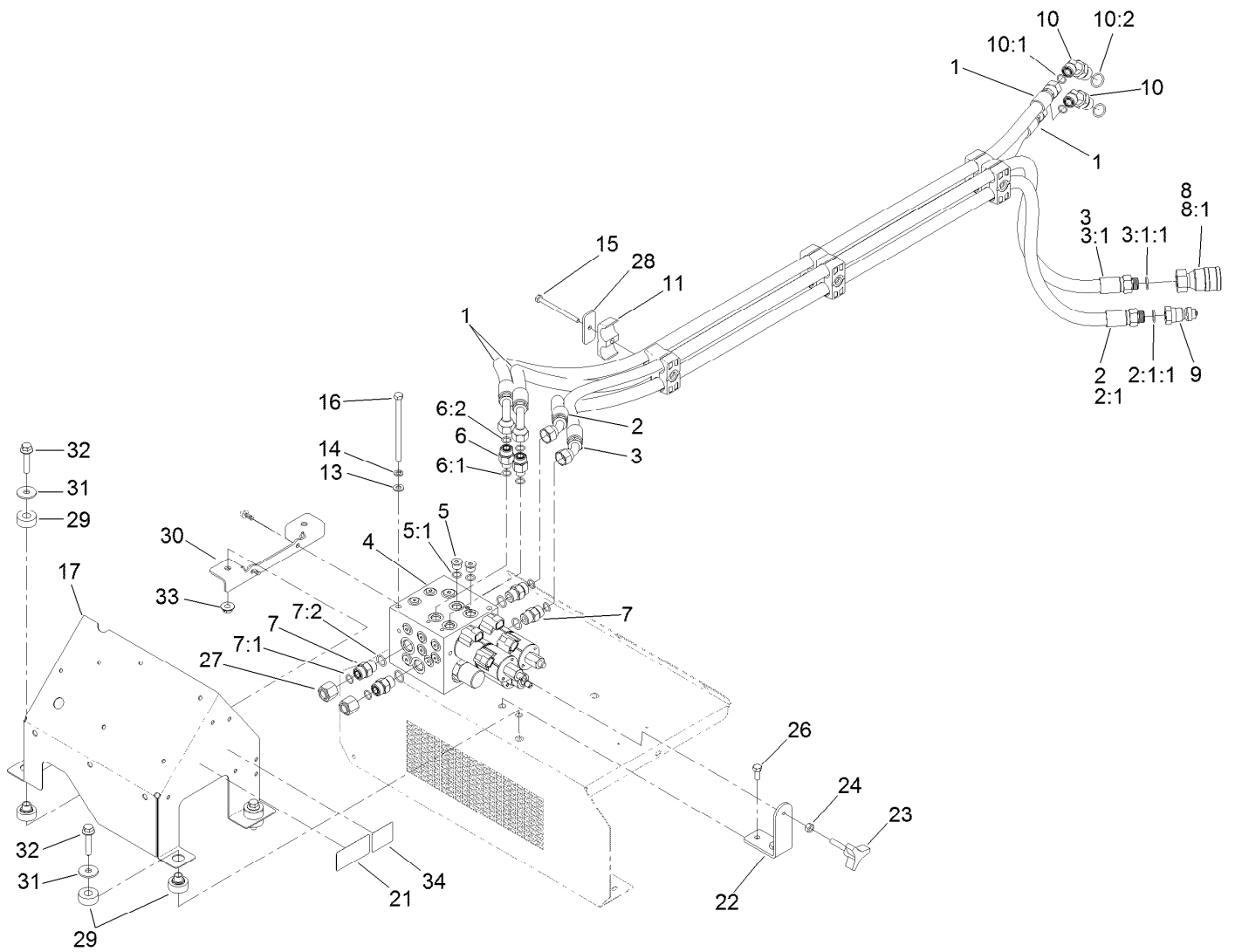
| <i>Ref.</i> | <i>Part Number</i> | <i>Qty.</i> | <i>Description</i>      | <i>Ref.</i> | <i>Part Number</i> | <i>Qty.</i> | <i>Description</i>       |
|-------------|--------------------|-------------|-------------------------|-------------|--------------------|-------------|--------------------------|
| 1           | T0001-2184-01      | 1           | Extension-Hopper, Rear  | 12:3        | 119-6806           | 1           | Decal-Danger             |
| 2           | 119-6906           | 54          | Screw-HSBH              | 13          | T36016084-01       | 1           | Pocket-Control, Wireless |
| 3           | T36051116-01       | 4           | Cap-Corner              | 14          | 104-8300           | 10          | Nut-Flange, NI           |
| 5           | T0000-7799-01      | 1           | Wall-Hopper, Rear       | 15          | 3229-2             | 29          | Screw-CARR               |
| 6           | T0001-1626-01      | 1           | Extension-Hopper, Front | 16          | T01-34550B         | 2           | Skirt-Conveyor, Rubber   |
| 7           | T36051112-01       | 1           | Wall-Hopper, Right      | 17          | T01-34551B         | 1           | Rubber-Seal, Front       |
| 8           | 119-6903           | 10          | Screw-HSBH              | 18          | T36051140-01       | 1           | Retainer-Skirt, Front    |
| 9           | T01-44788D-03      | 1           | Lift                    | 19          | T36051540-01       | 2           | Retainer-Skirt, Conveyor |
| 10          | T36051108-01       | 1           | Wall-Hopper, Left       | 20          | 66-6140            | 3           | Decal                    |
| 11          | 104-7201           | 83          | Nut-Flange, NI          | 21          | 119-6801           | 2           | Decal                    |
| 12          | 119-6795           | 1           | Wall-Hopper, Front      | 22          | T0004-1839         | 1           | Canister-Manual          |
| 12:2        | 119-0217           | 1           | Decal-Danger            |             |                    |             |                          |





## Tailgate Assembly

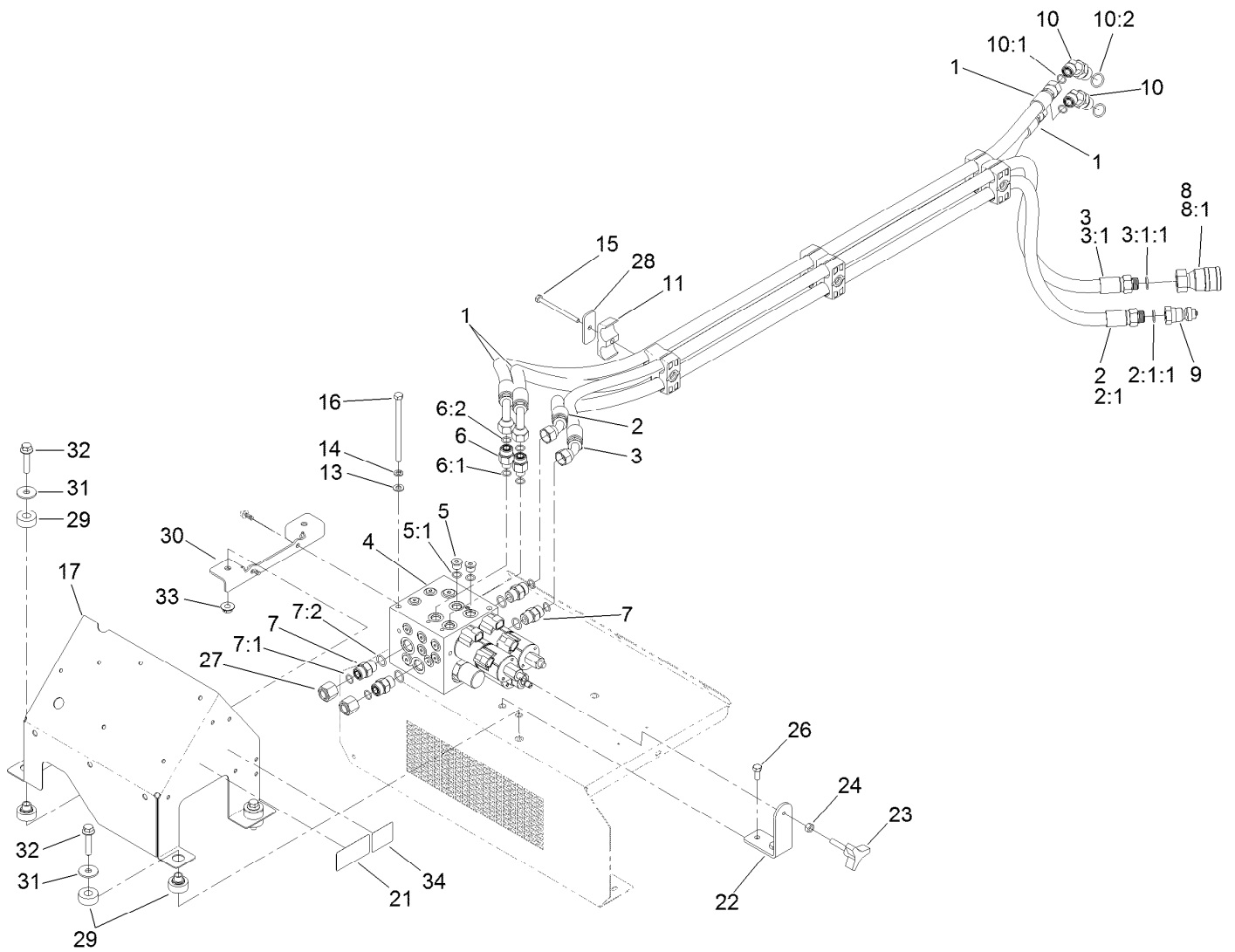
| <i>Ref.</i> | <i>Part Number</i> | <i>Qty.</i> | <i>Description</i>           | <i>Ref.</i> | <i>Part Number</i> | <i>Qty.</i> | <i>Description</i> |
|-------------|--------------------|-------------|------------------------------|-------------|--------------------|-------------|--------------------|
| 1           | 28-8070            | 1           | Lanyard                      | 13          | 119-6903           | 6           | Screw-HSBH         |
| 2           | 3290-467           | 1           | Pin-Hair                     | 15          | T0000-2561-01      | 1           | Frame-Gate         |
| 3           | T0001-6926         | 1           | Pin-Tailgate                 | 16          | T0000-2623         | 2           | Washer-Poly        |
| 4           | 106-1392           | 1           | Ring-Retaining, Spiral (EXT) | 17          | 110-6894           | 2           | Washer-Pivot       |
| 5           | 104-7201           | 20          | Nut-Flange, NI               | 18          | T0002-0682         | 1           | Handle-Adjustable  |
| 6           | T0000-2597         | 7           | Tine-Gate                    | 19          | T36051127          | 1           | Pad-Wear, Gate     |
| 7           | T0000-2588-01      | 1           | Mount-Tine, Gate             | 20          | 3290-141           | 10          | Screw-HSFH         |
| 8           | 321-4              | 7           | Screw-HH                     | 21          | 119-6906           | 3           | Screw-HSBH         |
| 9           | T0000-2564-01      | 1           | Gate                         | 22          | 104-8300           | 6           | Nut-Flange, NI     |
| 10          | T62021000          | 1           | Grip-Handle                  | 23          | 119-6808           | 1           | Decal-Volume       |
| 11          | 3233-2             | 1           | Screw-CARR                   | 24          | 119-6818           | 1           | Decal-Tail Gate    |
| 12          | T0000-2585         | 2           | Rod-Hinge                    |             |                    |             |                    |



## Hydraulic System Assembly

| Ref.  | Part Number | Qty. | Description              | Ref. | Part Number | Qty. | Description            |
|-------|-------------|------|--------------------------|------|-------------|------|------------------------|
| 1     | 119-6945    | 2    | HYD Hose ASM             | 9    | 98-4698     | 1    | Male-Disconnect, Quick |
| 2     | 119-6946    | 1    | HYD Hose ASM             | 10   | 340-89      | 2    | Fitting-HYD, 45 DEG    |
| 2:1   |             | 1    | Fitting-Straight ●       | 10:1 | 237-30      | 1    | O-Ring                 |
| 2:1:1 | 237-79      | 1    | O-Ring                   | 10:2 | 237-80      | 1    | O-Ring                 |
| 3     | 119-6947    | 1    | HYD Hose ASM             | 11   | 56-7974     | 12   | Clamp-Tube             |
| 3:1   |             | 1    | Fitting-Straight ●       | 13   | 3256-23     | 2    | Washer-Flat            |
| 3:1:1 | 237-79      | 1    | O-Ring                   | 14   | 3253-4      | 2    | Washer-Lock            |
| 4     | T0000-7792  | 1    | HYD Block ASM            | 15   | 321-19      | 3    | Screw-HH               |
| 5     | 353-989     | 2    | Plug-Hex, Hollow         | 16   | 322-29      | 2    | Screw-HH               |
| 5:1   | 237-42      | 1    | O-Ring                   | 17   | 130-8582-01 | 1    | Guard-Control, HYD     |
| 6     | 340-5       | 2    | Fitting-Straight         | 21   | 119-6815    | 1    | Decal-Tighten Bolts    |
| 6:1   | 237-42      | 1    | O-Ring                   | 22   | 130-8584    | 1    | Bracket-Knob           |
| 6:2   | 237-30      | 1    | O-Ring                   | 23   | 108-2356    | 1    | Knob                   |
| 7     | 340-4       | 4    | Fitting-HYD, Straight    | 24   | 3217-6      | 1    | Nut-Hex                |
| 7:1   | 237-30      | 1    | O-Ring                   | 26   | 322-3       | 2    | Screw-HH               |
| 7:2   | 237-79      | 1    | O-Ring                   | 27   | 340-152     | 2    | Cap-HYD                |
| 8     | 98-4699     | 1    | Female-Disconnect, Quick | 28   | T36033040   | 3    | Plate-Clamp            |
| 8:1   | 100-4165    | 1    | Seal Kit                 | 29   | 121-2870    | 4    | Mount-2 Piece          |

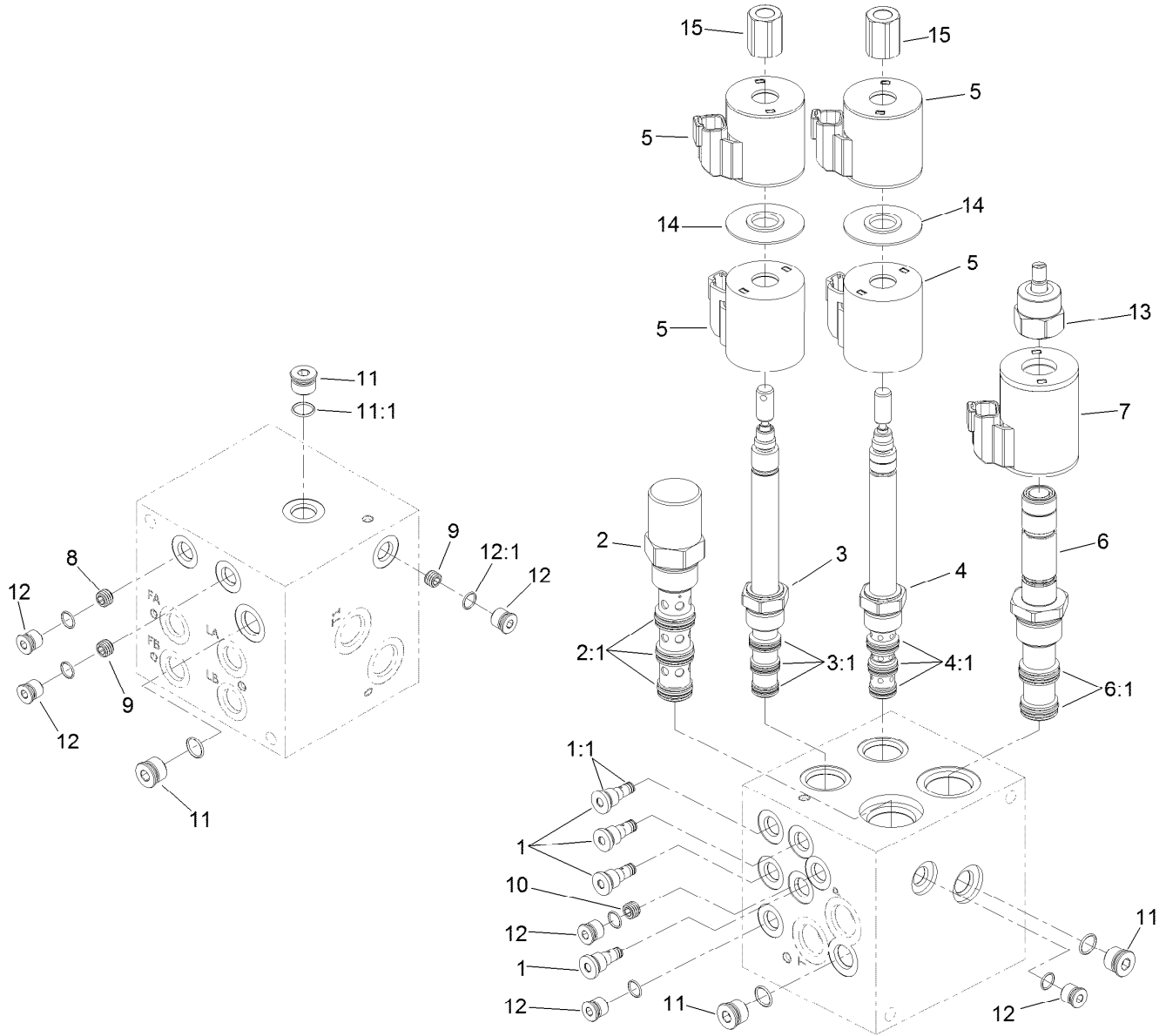
● Not serviced separately



## Hydraulic System Assembly (continued)

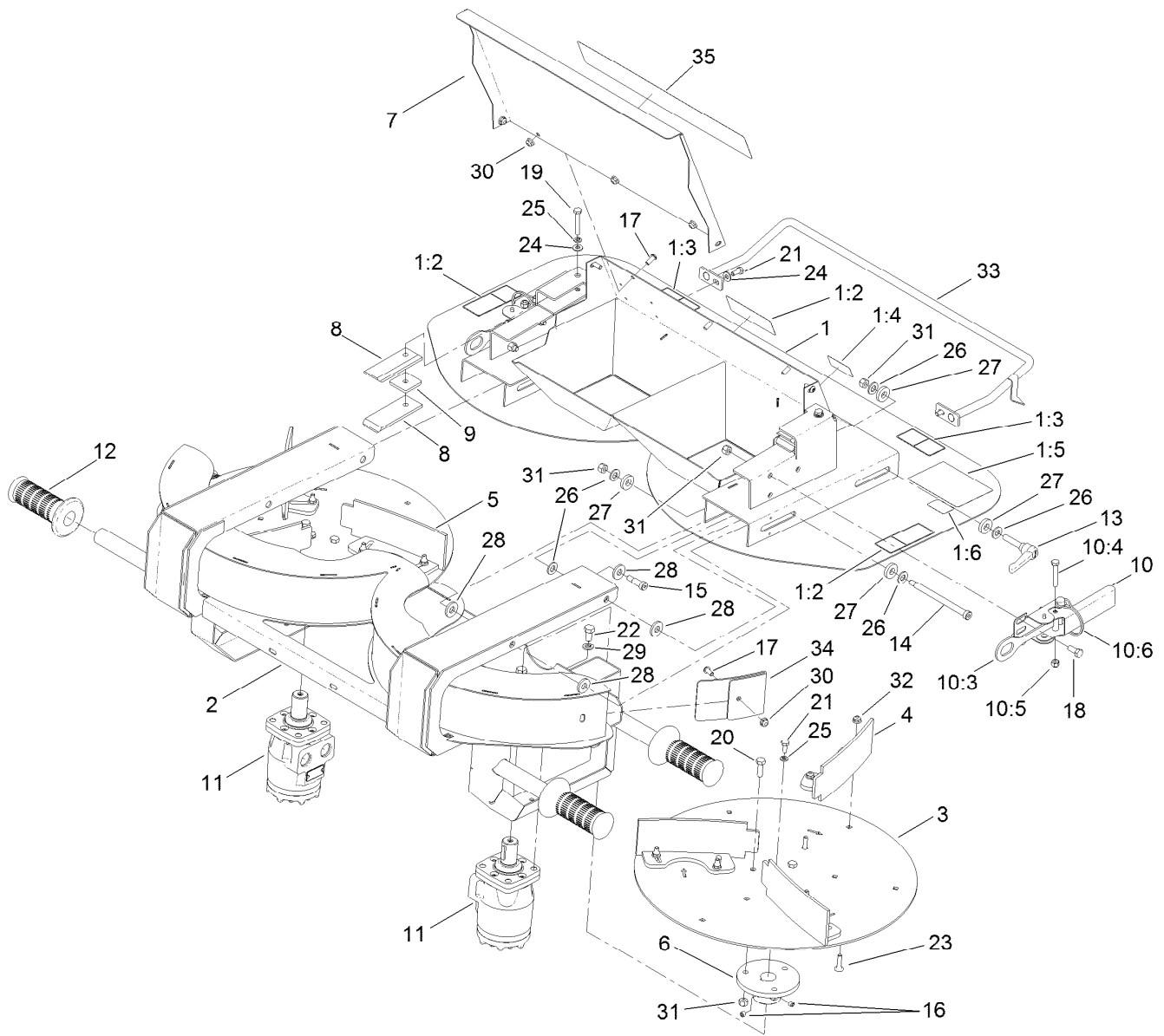
| <i>Ref.</i> | <i>Part Number</i> | <i>Qty.</i> | <i>Description</i>      | <i>Ref.</i> | <i>Part Number</i> | <i>Qty.</i> | <i>Description</i> |
|-------------|--------------------|-------------|-------------------------|-------------|--------------------|-------------|--------------------|
| 30          | 130-8583-01        | 1           | Bracket-Isolation Mount | 33          | 32128-19           | 2           | Nut-HF             |
| 31          | 93-8806            | 4           | Washer-Hardened         | 34          | 131-6766           | 1           | Decal-Fuses        |
| 32          | 3234-19            | 4           | Screw-HHF               |             |                    |             |                    |

● Not serviced separately



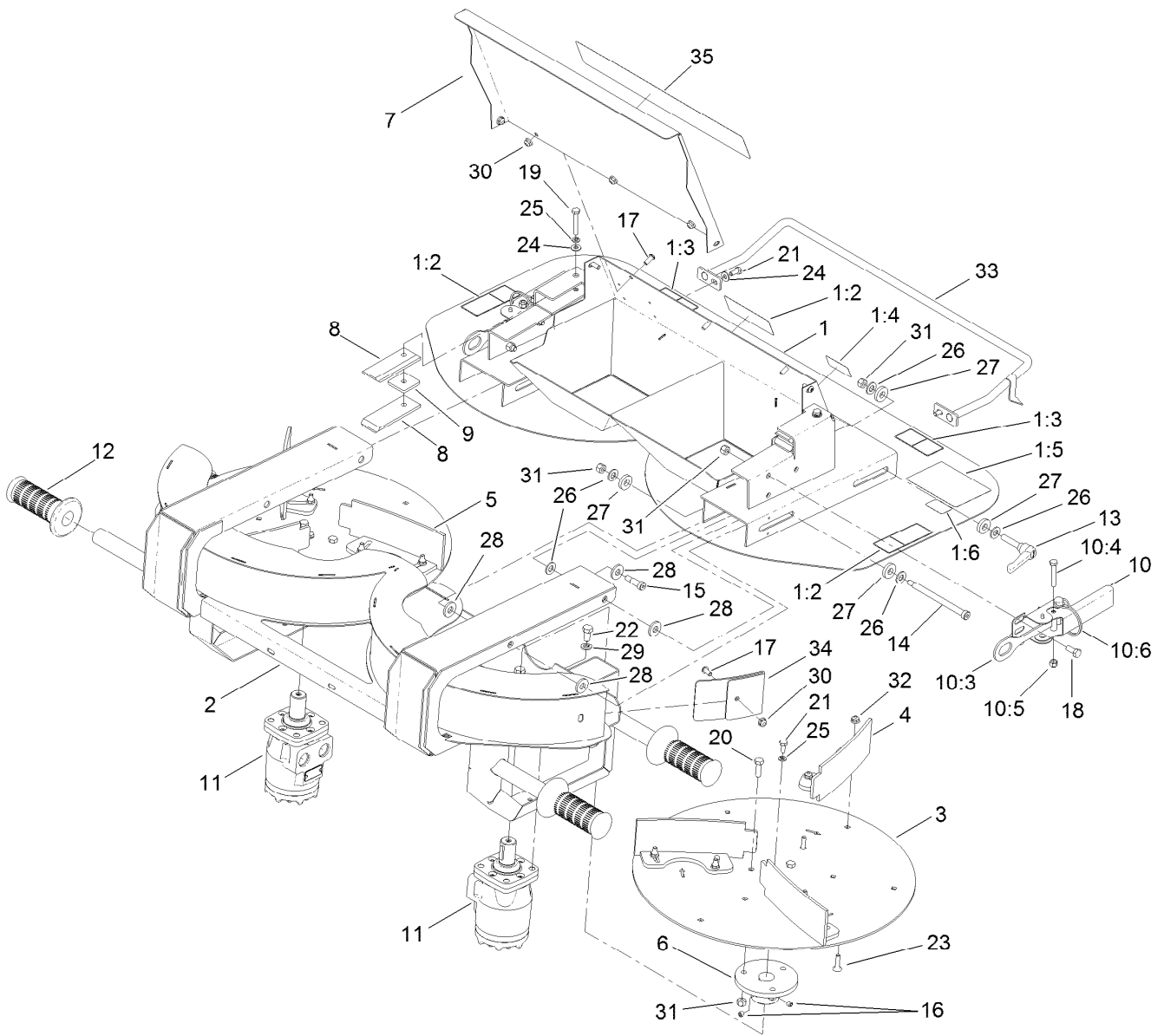
## Hydraulic Block Assembly No. T0000-7792

| <i>Ref.</i> | <i>Part Number</i> | <i>Qty.</i> | <i>Description</i>            | <i>Ref.</i> | <i>Part Number</i> | <i>Qty.</i> | <i>Description</i>   |
|-------------|--------------------|-------------|-------------------------------|-------------|--------------------|-------------|----------------------|
| 1           | 120-9415           | 4           | Valve-Check                   | 7           | 120-0920           | 1           | Coil-Valve           |
| 1:1         | 125-0100           | 1           | Seal Kit                      | 8           | 110-8883           | 1           | Plug-Orifice (0.040) |
| 2           | 120-9416           | 1           | Valve-Pressure<br>Compensator | 9           | 110-8889           | 2           | Plug-Orifice (0.020) |
| 2:1         | 110-6111           | 1           | Seal Kit                      | 10          | 120-9422           | 1           | Plug-Orifice (0.068) |
| 3           | 120-9417           | 1           | Valve-Solenoid                | 11          | 353-508            | 4           | Plug-HH              |
| 3:1         | 110-8908           | 1           | Spool Valve Seal Kit          | 11:1        | 237-42             | 1           | O-Ring               |
| 4           | 120-9418           | 1           | Valve-Solenoid                | 12          | 353-990            | 6           | Plug ASM             |
| 4:1         | 110-8908           | 1           | Spool Valve Seal Kit          | 12:1        | 237-78             | 1           | O-Ring               |
| 5           | 119-4619           | 4           | Coil-Solenoid                 | 13          | 125-0101           | 1           | Nut-Coil             |
| 6           | 120-9420           | 1           | Valve-Proportional Flow       | 14          | 117-8316           | 2           | Spacer-E Coil        |
| 6:1         | 114-5515           | 1           | Seal Kit                      | 15          | 125-0102           | 2           | Nut-Coil             |



## Twin Spinner Assembly

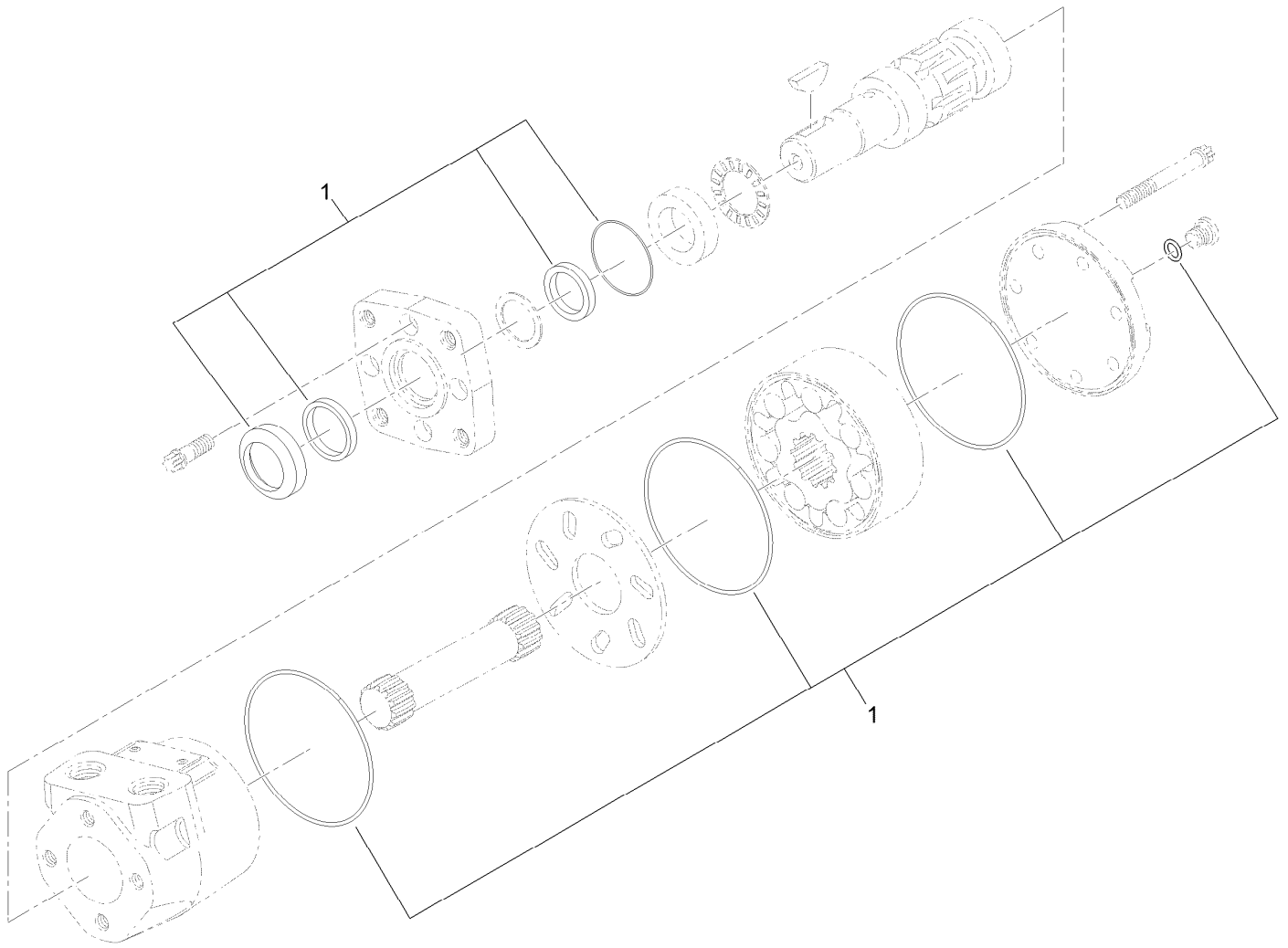
| Ref. | Part Number   | Qty. | Description                 | Ref. | Part Number | Qty. | Description         |
|------|---------------|------|-----------------------------|------|-------------|------|---------------------|
| 1    | 119-6793      | 1    | Top Plate ASM               | 12   | T62021010   | 4    | Grip-Vinyl, Black   |
| 1:2  | 119-6804      | 3    | Decal-Warning, Bystanders   | 13   | T0000-2676  | 2    | Handle-Adjustable   |
| 1:3  | 119-6805      | 2    | Decal-Warning, Moving Parts | 14   | 119-6914    | 2    | Screw-Shoulder, HSH |
| 1:4  | 119-6810      | 1    | Decal-Propass, Lift         | 15   | 119-6915    | 2    | Screw-Shoulder, HSH |
| 1:5  | 119-6817      | 1    | Decal-Fine Tuning           | 16   | 3246-2      | 4    | Screw-Set, HSH      |
| 1:6  | 119-6816      | 1    | Decal-Adjustment, Slide     | 17   | 119-6906    | 7    | Screw-HSBH          |
| 2    | T36054605-01  | 1    | Frame-Spinner               | 18   | 322-3       | 6    | Screw-HH            |
| 3    | T36054790-01  | 2    | Disk-Spinner                | 19   | 321-10      | 2    | Screw-HH            |
| 4    | T0001-2003-01 | 3    | Paddle-Curved, Left         | 20   | 322-5       | 6    | Screw-HH            |
| 5    | T0001-2002-01 | 3    | Paddle-Curved, Right        | 21   | 321-3       | 4    | Screw-HH            |
| 6    | T36054780     | 2    | Hub-Disk, Spinner           | 22   | 323-4       | 8    | Screw-HH            |
| 7    | T0000-7676-01 | 1    | Guard-Deflector, Sand       | 23   | 119-6920    | 12   | Bolt-Carriage       |
| 8    | T0000-2191    | 4    | Slide-Attachment            | 24   | 3256-22     | 4    | Washer-Flat         |
| 9    | T0000-2189    | 2    | Spacer-Attachment           | 25   | 3253-3      | 4    | Washer-Lock         |
| 10   | T36054750     | 2    | Quick Attach Latch ASM      | 26   | 3256-24     | 10   | Washer-Flat         |
| 10:3 | T0002-1281-01 | 1    | Hook ASM                    | 27   | T0000-2386  | 8    | Washer-Plain        |
| 10:4 | 321-10        | 1    | Screw-HH                    | 28   | T0000-2160  | 8    | Washer-Plain        |
| 10:5 | 3296-42       | 1    | Nut-Lock, NI                | 29   | 3253-21     | 8    | Washer-Lock         |
| 10:6 | 100-1663      | 1    | Pin-Hitch                   | 30   | 104-7201    | 7    | Nut-Flange, NI      |
| 11   | T0001-9863    | 2    | HYD Motor ASM               | 31   | 3296-29     | 16   | Nut-Lock, NI        |
|      |               |      |                             | 32   | 119-6921    | 12   | Nut-Hex, Flange     |



## Twin Spinner Assembly (continued)

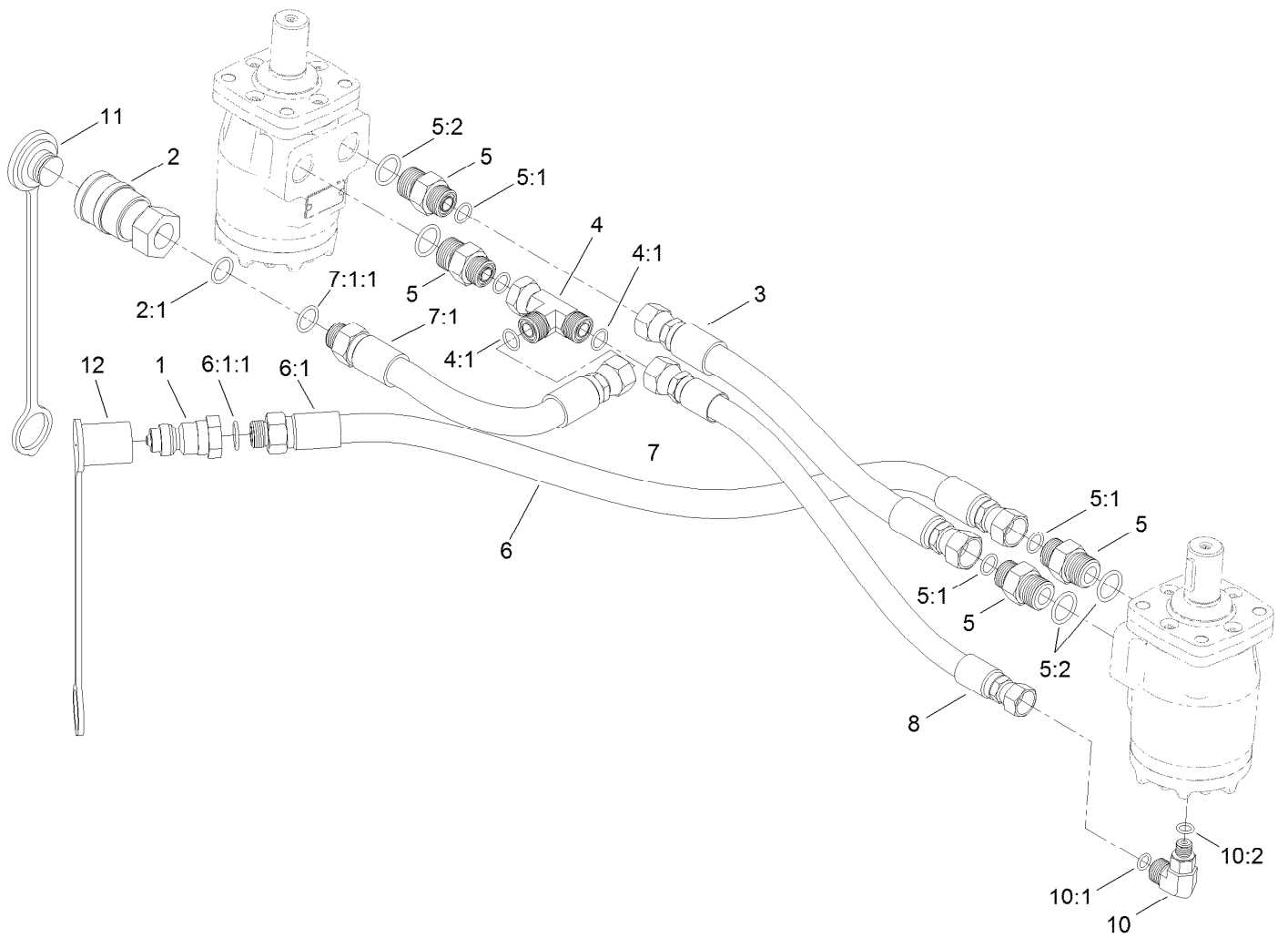
| <i>Ref.</i> | <i>Part Number</i> | <i>Qty.</i> | <i>Description</i> |
|-------------|--------------------|-------------|--------------------|
| 33          | T0000-7686-01      | 1           | Handle-Slide       |

| <i>Ref.</i> | <i>Part Number</i> | <i>Qty.</i> | <i>Description</i>     |
|-------------|--------------------|-------------|------------------------|
| 34          | T0002-2373-01      | 2           | Plate-Wear, Spinner    |
| 35          | 119-6814           | 1           | Decal-Operating System |



## Hydraulic Motor Assembly No. T0001-9863

| <i>Ref.</i> | <i>Part Number</i> | <i>Qty.</i> | <i>Description</i> |
|-------------|--------------------|-------------|--------------------|
| 1           | T56013016          | 1           | Seal Kit           |

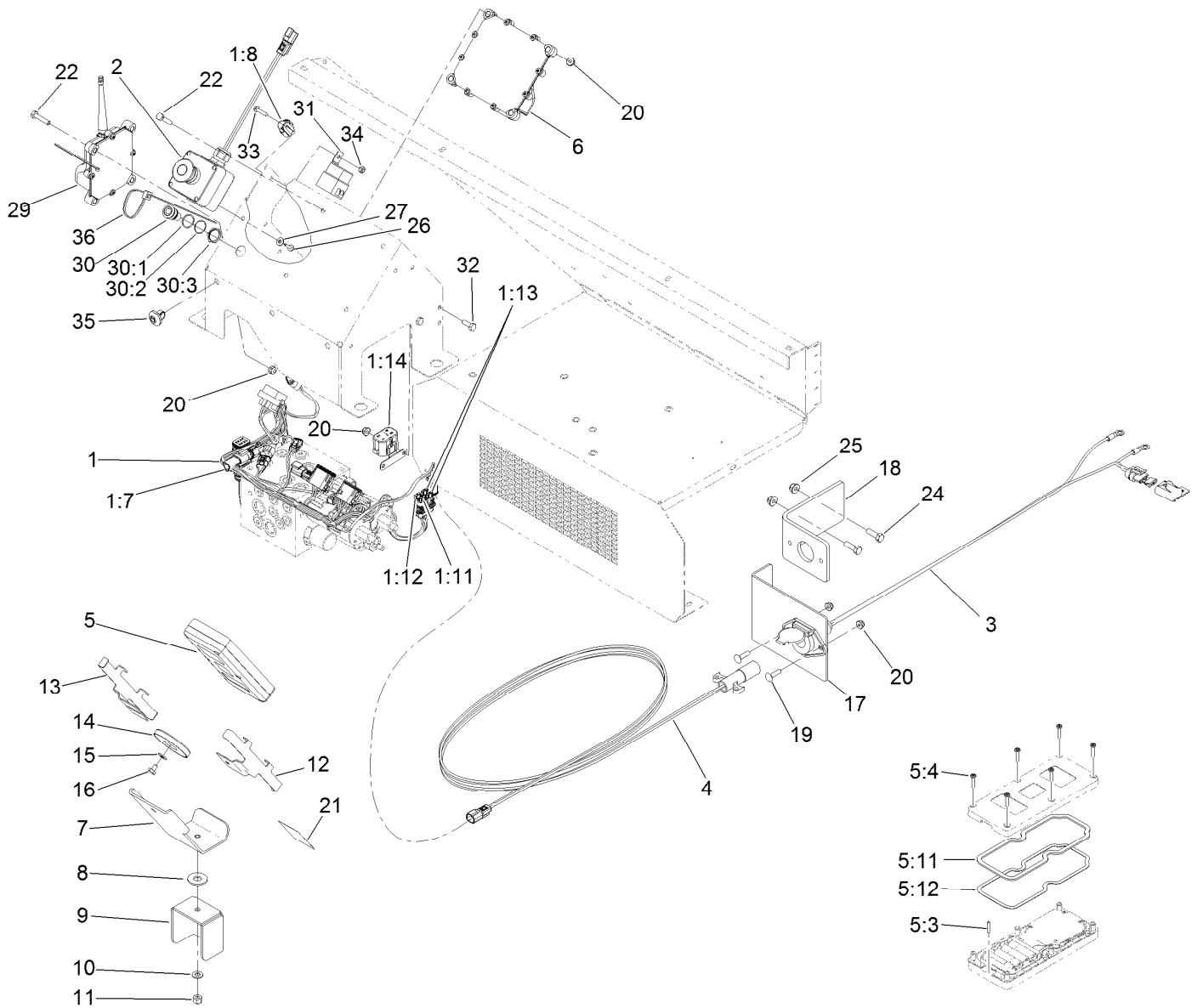


## Twin Spinner Hydraulic Assembly

| Ref. | Part Number | Qty. | Description              | Ref.  | Part Number | Qty. | Description         |
|------|-------------|------|--------------------------|-------|-------------|------|---------------------|
| 1    | 98-4698     | 1    | Male-Disconnect, Quick   | 6:1:1 | 237-79      | 1    | O-Ring              |
| 2    | 98-4699     | 1    | Female-Disconnect, Quick | 7     | 120-0812    | 1    | HYD Hose ASM        |
| 2:1  | 100-4165    | 1    | Seal Kit                 | 7:1   |             | 1    | Fitting-Straight ●  |
| 3    | 117-0180    | 1    | Hose-HYD                 | 7:1:1 | 237-79      | 1    | O-Ring              |
| 4    | 340-104     | 1    | Fitting-HYD, Tee         | 8     | 120-0810    | 1    | HYD Hose ASM        |
| 4:1  | 237-30      | 2    | O-Ring                   | 10    | 340-97      | 1    | Fitting-HYD, 90 DEG |
| 5    | 340-6       | 4    | Fitting-HYD, Straight    | 10:1  | 237-22      | 1    | O-Ring              |
| 5:1  | 237-30      | 1    | O-Ring                   | 10:2  | 237-78      | 1    | O-Ring              |
| 5:2  | 237-80      | 1    | O-Ring                   | 11    | T56152150   | 1    | Plug-Quick Connect  |
| 6    | 120-0842    | 1    | HYD Hose ASM             | 12    | T56152152   | 1    | Cap-Quick Connect   |
| 6:1  |             | 1    | Fitting-Straight ●       |       |             |      |                     |

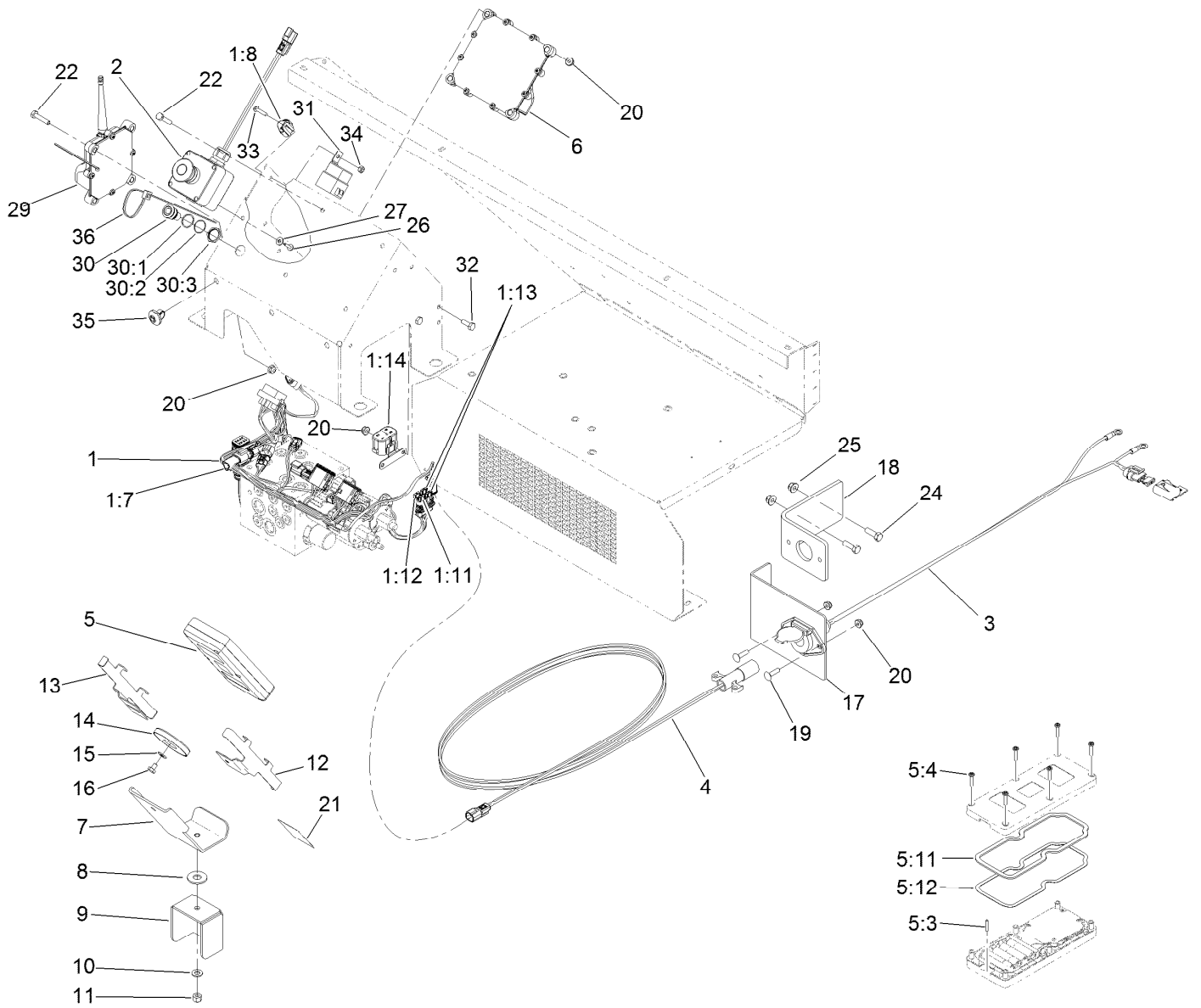
● Not serviced separately





## Electrical Assembly

| Ref. | Part Number   | Qty. | Description                        | Ref. | Part Number | Qty. | Description                |
|------|---------------|------|------------------------------------|------|-------------|------|----------------------------|
| 1    | 122-0336      | 1    | Harness-Wire                       | 10   | 3256-23     | 1    | Washer-Flat                |
| 1:7  | 32180-043     | 2    | Resistor-120 Ohm                   | 11   | 3296-29     | 1    | Nut-Lock, NI               |
| 1:8  | 32180-089     | 1    | Cap-Plug, 3 Way                    | 12   | 125-5960-03 | 1    | Sleeve-Half                |
| 1:11 | 121-8861      | 1    | Fuse-Mini Blade, 2 Amp             | 13   | 125-5962-03 | 1    | Sleeve-Half                |
| 1:12 | 121-8865      | 2    | Fuse-Mini Blade, 7.5 Amp           | 14   | T0002-8729  | 1    | Magnet-Ceramic, Encased    |
| 1:13 | 121-8867      | 1    | Fuse-Mini Blade, 15 Amp            | 15   | 3256-22     | 1    | Washer-Flat                |
| 1:14 | 32180-179     | 1    | Cover-Bussman                      | 16   | 321-1       | 1    | Screw-HH                   |
| 2    | 119-6909      | 1    | Stop-Emergency                     | 17   | T36054020   | 1    | Bracket-Socket             |
| 3    | 119-6910      | 1    | Harness-Wire, Universal Power Lead | 18   | T36054030   | 1    | Bracket-Socket, Heavy      |
| 4    | 119-6911      | 1    | Harness-Wire, Intermediate Power   | 19   | 3229-2      | 2    | Screw-CARR                 |
| 5    | 125-1330      | 1    | Remote ASM                         | 20   | 104-7201    | 12   | Nut-Flange, NI             |
| 5:3  | 121-2818      | 1    | Pin-Lanyard                        | 21   | 119-6819    | 1    | Decal-Wireless Control     |
| 5:4  | 119-6414      | 6    | Screw-PPH                          | 22   | 321-8       | 8    | Screw-HH                   |
| 5:11 | 125-1225      | 1    | Backer-Gasket, HH (Large)          | 24   | 322-5       | 2    | Screw-HH                   |
| 5:12 | 125-1226      | 1    | Gasket-HH (Large)                  | 25   | 104-8300    | 2    | Nut-Flange, NI             |
| 6    | 125-1360      | 1    | Controller                         | 26   | 98-1375     | 2    | Screw-HWH                  |
| 7    | T0002-8685-01 | 1    | Mount-Controller                   | 27   | 3256-14     | 2    | Washer-Flat                |
| 8    | T0000-2623    | 1    | Washer-Poly                        | 29   | 132-9600    | 1    | Controller                 |
| 9    | T0002-8666-01 | 1    | Base-Swivel                        | 30   | 122-0630    | 1    | Red Led Indicator Lamp ASM |
|      |               |      |                                    | 30:1 | 122-0634    | 1    | Gasket-Led                 |



## Electrical Assembly (continued)

| <i>Ref.</i> | <i>Part Number</i> | <i>Qty.</i> | <i>Description</i> | <i>Ref.</i> | <i>Part Number</i> | <i>Qty.</i> | <i>Description</i> |
|-------------|--------------------|-------------|--------------------|-------------|--------------------|-------------|--------------------|
| 30:2        | 122-0633           | 1           | Washer-Locking     | 33          | 106-9169           | 1           | Screw-HWH          |
| 30:3        | 122-0632           | 1           | Nut-Fixing         | 34          | 3296-2             | 1           | Nut-Lock, NI       |
| 31          | 99-7430            | 1           | Relay              | 35          | 32180-149          | 3           | Tie-Button Head    |
| 32          | 321-4              | 2           | Screw-HH           | 36          | 3290-378           | 1           | Tie-Cable          |

# Attachments and Accessories

## For 44751 ProPass 200 Top Dresser with Twin Spinner and Wireless Control

| <b>Product Name</b>                      | <b>Model/Part</b> |
|--|-------------------|
| Twin Spinner .....                       | 44702             |
| Conveyor and Swivel Kit .....            | 44703             |
| Tow-Type Chassis .....                   | 44704             |
| Tow-Type Chassis Fender Kit .....        | 44705             |
| Tow-Type Chassis Hose Assembly Kit ..... | 44706             |
| Toro Workman Chassis .....               | 44707             |
| Storage Stand .....                      | 44712             |
| Hydraulic Power Pack .....               | 44713             |



**Count on it.**