



1644HXL Lawn Tractor

**Model No. 71196 – 8900001 & Up
Model No. 71218 – 8900001 & Up**

Parts Catalog

ORDERING REPLACEMENT PARTS

To order replacement parts, please supply: the part number, the quantity, and the description of each part desired.

Contents

Description	Page	Description	Page
Frame Assembly	1	Electrical Assembly	12
Hood Assembly	2	Electrical Schematic	13
Seat Assembly	3	Hydro Transaxle Assembly	14
Front Axle Assembly	4	Hydro Transaxle Assembly (Continued)	15
Steering Assembly	5	Hydro Transaxle Assembly (Continued)	16
Engine Assembly	6	Battery Assembly	17
Clutch Assembly	7	Engine Briggs & Stratton	
Rear Axle Assembly	8	Model 28Q777-0668-E1	18-26
Transaxle Assembly	9	Toro Part Number Index	27-33
Speed Control Assembly	10		
Height Of Cut Assembly	11	Note:	

Accessories

Description	Model / Parts No.	Description	Model / Parts No.
Twin Bag Vac. Bagger Kit	Model No. 79102	Snow Blade Adapter Kit	Part No. 93-3806
Recycler Kit	Model No. 79174	Wheel Weight Kit	Model No. 59159
Hi-Sail Bagging Blade	Part No. 57-4940	44" Side Discharge Deck	
Tire Chains	Model No. 82522	(Model No. 71218 Only)	Model No. 79107
Headlight Kit (Standard)	Model No. 79180	44" Recycler Deck	
42" Snowblade Kit	Model No. 79150	(Model No. 71196 Only)	Model No. 79108

Part Description Abbreviations

Part descriptions in this catalog may include the following abbreviations.

Abbreviation	Meaning	Abbreviation	Meaning
AR	as required	HWHTF	hex washer head
ASM	assembly		thread forming
CARR	carriage	INC	incorporated
DEG	degrees	LH	left hand
FH	flat head	PH	pan head
GA	gauge	PPH	Phillips pan head
HF	hex flange	PTO	power take off
HFV	hex flange washer	RH	right hand
HH	hex head	SFH	slotted fillister head
HHF	hex head flange	SH	square head
HHST	hex head self tapping	SHWH	slotted hex washer head
HJ	hex jam	SPH	slotted pan head
HOC	height-of-cut	STD	standard
HS	hex socket	TAP	self tapping
HSBH	hex socket button head	TH	truss head
HSFH	hex socket flat head	TTH	Torx truss head
HSH	hex socket head	WH	wing head
HWH	hex washer head		

Important Format Explanations

This catalog uses special formats to convey information in illustrations and parts lists. Specifically, one format is used in conjunction with service assemblies and another with quantities associated with reference numbers.

Service Assemblies

Parts within service assemblies have reference numbers in the form $X:Y$. X is the reference number of the service assembly and Y is a sequential number unique to each part within the service assembly.

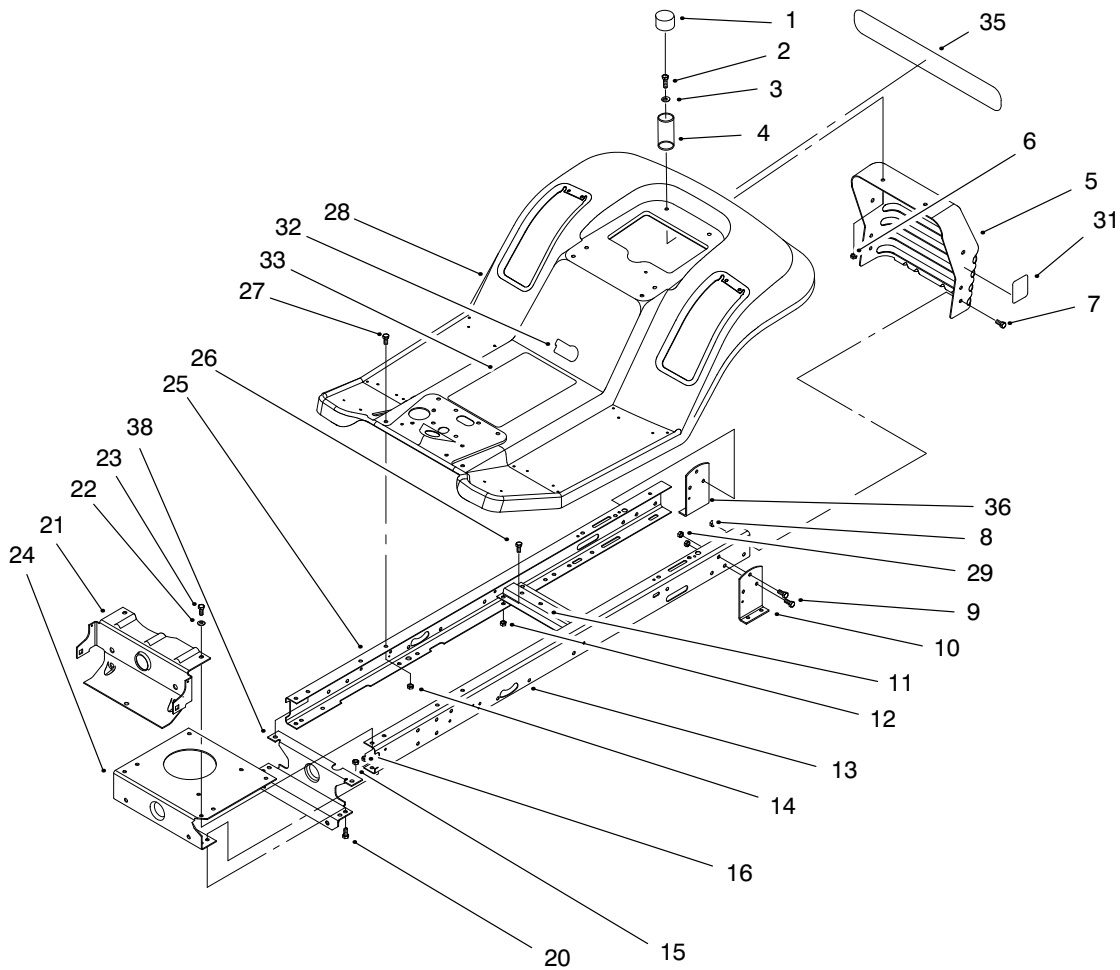
For example, a wheel assembly might be identified by reference number 6, the tire by 6:1, the valve by 6:2, and the wheel by 6:3. When you order the assembly identified by reference number 6, you receive all parts identified by reference numbers 6:1, 6:2, and 6:3. However, you may also order any part individually.

Reference numbers of this type appear in part lists and as callouts in illustrations.

Reference Numbers with Quantities

Illustrations may have a quantity in parentheses next to a reference number, in the form $X (Y)$. X is the reference number. Y in parentheses is the quantity of the part identified by the reference number.

For example, the illustration callout 4 (2) indicates that two parts are used in that instance.

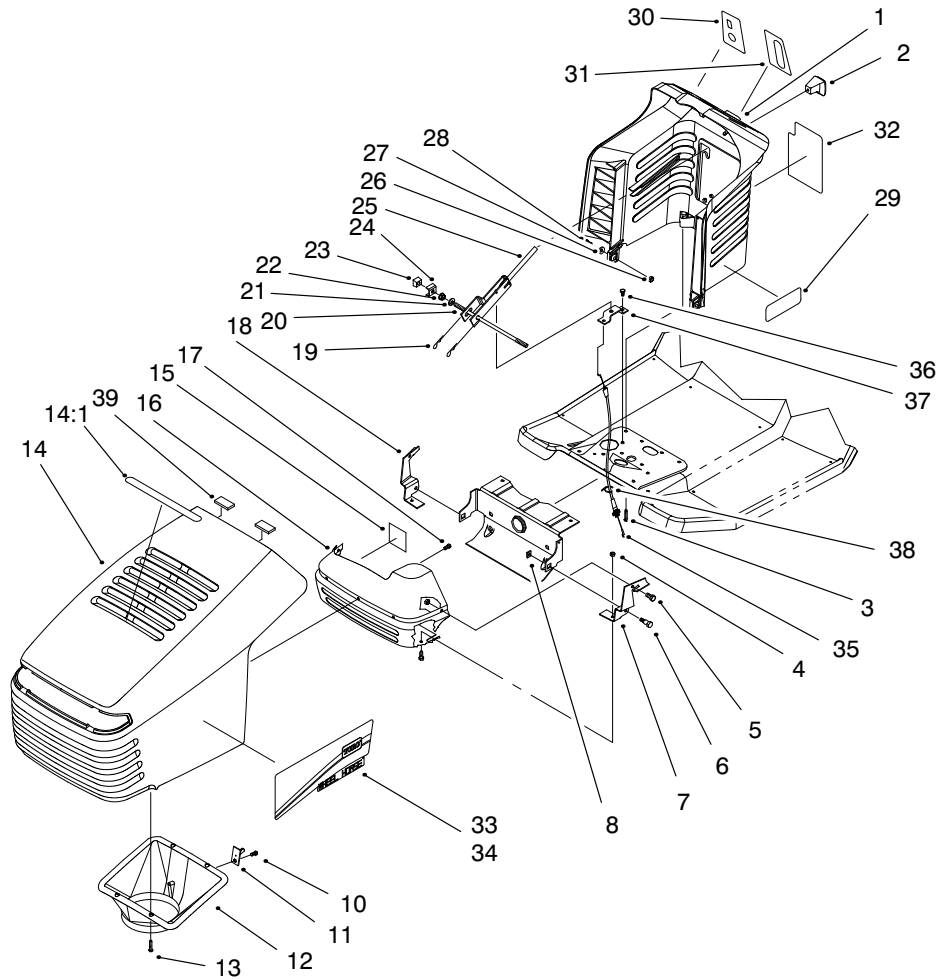


Sheet No.:2

Frame Assembly

Ref. No.	Part No.	Qty.	Description
1	701178	2	Cap-Protector
2	322-5	2	Screw-HH
3	3256-23	2	Washer-Flat
4	88-6220	2	Spring - Compression
5	88-3940-03	1	Panel - Rear
6	3296-29	2	Nut-Lock
7	322-3	4	Screw-HH
8	3296-29	4	Nut-Lock
9	322-3	4	Screw-HH
10	93-3857-03	1	Bracket-Trans Mtg LH
11	88-4620-03	1	Bracket - Idler Pivot
12	3296-29	4	Nut-Lock
13	94-1999-03	1	Frame Rail-LH
14	3296-29	2	Nut-Lock
15	3296-29	6	Nut-Lock
16	3296-29	2	Nut-Lock
20	322-3	6	Screw-HH
21	95-3876	1	Support - Front Axle
22	3256-23	2	Washer-Flat
23	322-3	2	Screw-HH
24	88-4630-03	1	Plate - Engine Mounting
25	94-1998-03	1	Frame Rail-RH
26	322-3	4	Screw-HH
27	322-3	2	Screw-HH
28	88-3840	1	Body - Rear

Ref. No.	Part No.	Qty.	Description
29	3296-29	4	Nut-Lock
31	93-6678	1	Decal - Dump Valve
32	76-1340	1	Decal-USA (Only On: 71196)
33	93-6676	1	Decal-Instruction (Only On: 71218)
33	94-1238	1	Decal-Instruction (Only On: 71196)
35	95-0809	1	Decal-Rear Body
36	93-3856-03	1	Bracket-Trans Mtg RH
38	93-3831-03	1	Support - Rear

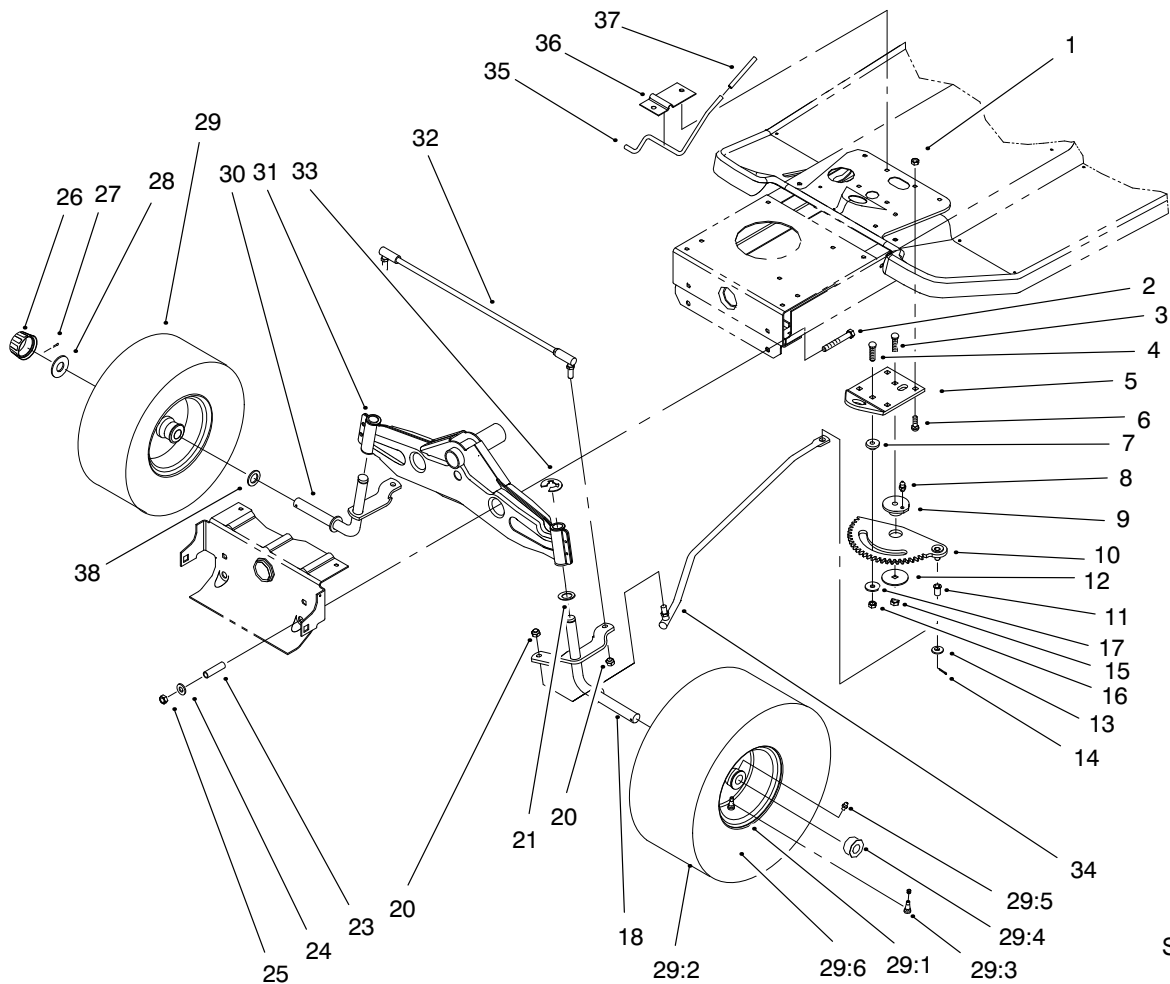


Sheet No.:3

Hood Assembly

Ref. No.	Part No.	Qty.	Description
1	93-0303	1	Tower-Steering Toro
2	94-5565	1	Knob - Control
3	46-8091	2	Screw-Tapping
4	3296-42	4	Nut-Lock
5	321-2	4	Screw-HH
6	28-0540	2	Bolt-Shoulder
7	88-6050-03	1	Bracket - Hinge
8	3290-496	2	Nut - Retained
10	46-8091	1	Screw-Tapping
11	94-1984	1	Pin-Latch
12	93-3891	1	Duct - Hood Air
13	46-8090	4	Screw-Tapping
14	92-8650	1	Hood-Toro
14:1	92-5748	1	Decal - Air Duct
15	92-5782	1	Patch - Heat Tape
16	93-3864	1	Shield - Heat
17	46-8090	3	Screw-Tapping
18	88-6040-03	1	Bracket - Hinge
19	3290-307	2	Pin-Cotter
20	88-4170	1	Rod - Pivot
21	3256-24	2	Washer-Flat
22	32128-43	2	Nut-Flange
23	88-4140	2	Nut - Wedge
24	88-4160	2	Clamp - Pivot Rod
25	88-5190-03	1	Lever W.a. - Deck Engage

Ref. No.	Part No.	Qty.	Description
26	3296-29	2	Nut-Lock
27	3256-23	2	Washer-Flat
28	322-3	2	Screw-HH
29	94-3528	2	Decal-Tower
30	92-2460	1	Decal - Ignition/Lights (Only On: 71196)
30	92-5731	1	Decal-Ign/Lights (Only On: 71218)
31	92-2461	1	Decal - Throttle (Only On: 71196)
31	92-5730	1	Decal - Throttle (Only On: 71218)
32	92-2462	1	Decal - Deck Engage (Only On: 71196)
32	93-6673	1	Decal - Deck Engage (Only On: 71218)
33	95-0808	1	Decal - Hood Left
34	95-0807	1	Decal - Hood Right
35	94-4292	1	Cable - Deck Engage
36	9266714	2	Screw-HWHTF
37	93-3849	1	Brkt-Cable
38	614249	1	Tie Strap
39	94-1980	2	Foam-Hood

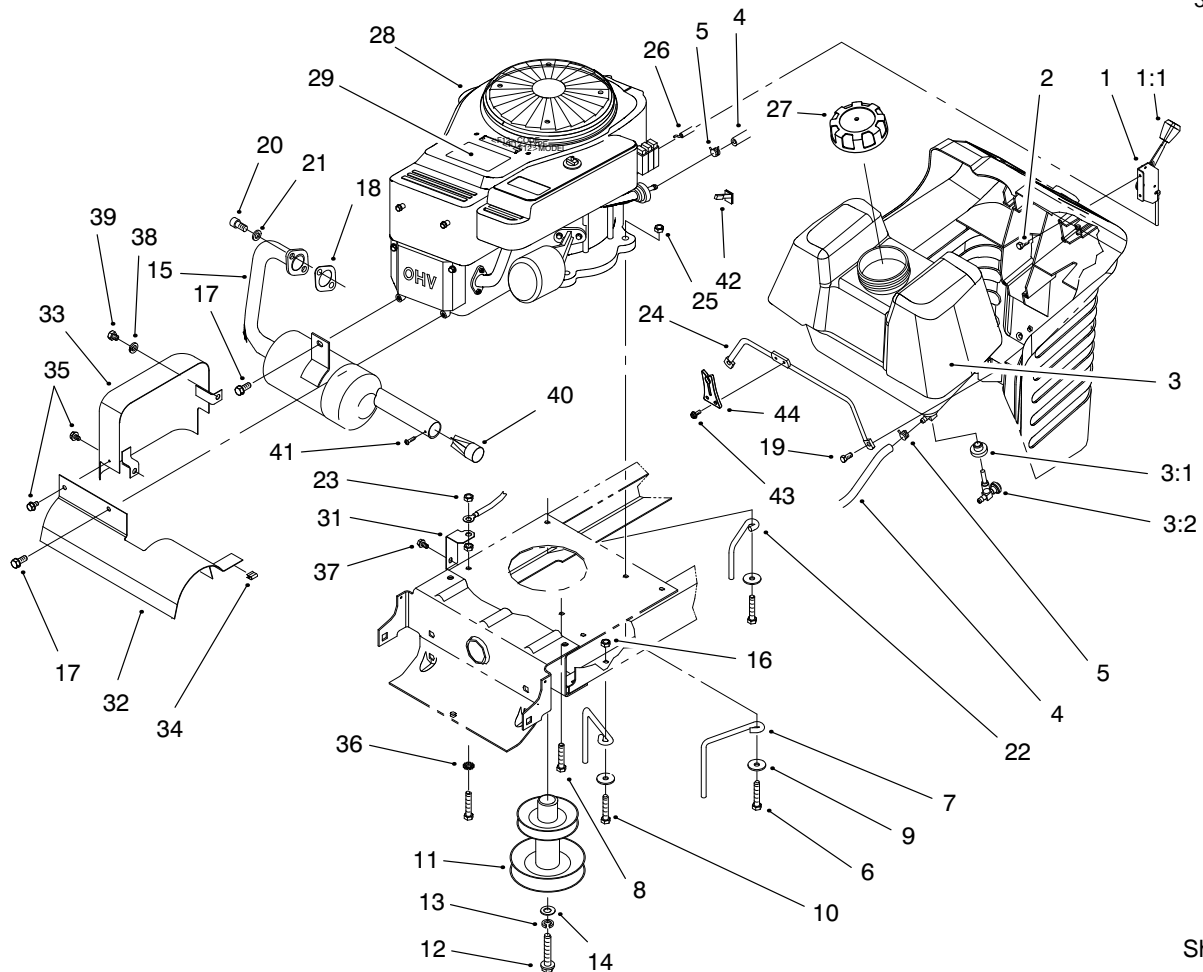


Sheet No.:5

Front Axle Assembly

Ref. No.	Part No.	Qty.	Description
1	3296-29	4	Nut-Lock
2	323-13	2	Screw-HH
3	3231-4	1	Bolt-CARR
4	3230-3	1	Screw-CARR
5	88-5130-03	1	Bracket - Steering Rack
6	3230-1	4	Bolt-CARR
7	88-5010	1	Spacer - Steering Rack
8	302-26	1	Fitting-Grease
9	88-4670	1	Bushing - Eccentric
10	88-5200	1	Steering Rack W.a.
11	52-2891	1	Bushing - Steering Links
12	111419	1	Washer-Bearing
13	3256-25	1	Washer-Fit
14	3272-10	1	Pin-Cotter
15	3296-39	1	Nut-Lock
16	3296-29	1	Nut-Lock
17	5-4460	1	Washer-Fender
18	93-3833-03	1	Spindle Wa-LH
20	3296-5	3	Nut-Lock
21	3-6498	2	Washer-Thrust
23	88-5470	2	Spacer - Front Axle
24	3256-24	2	Washer-Flat
25	3296-39	2	Nut-Lock

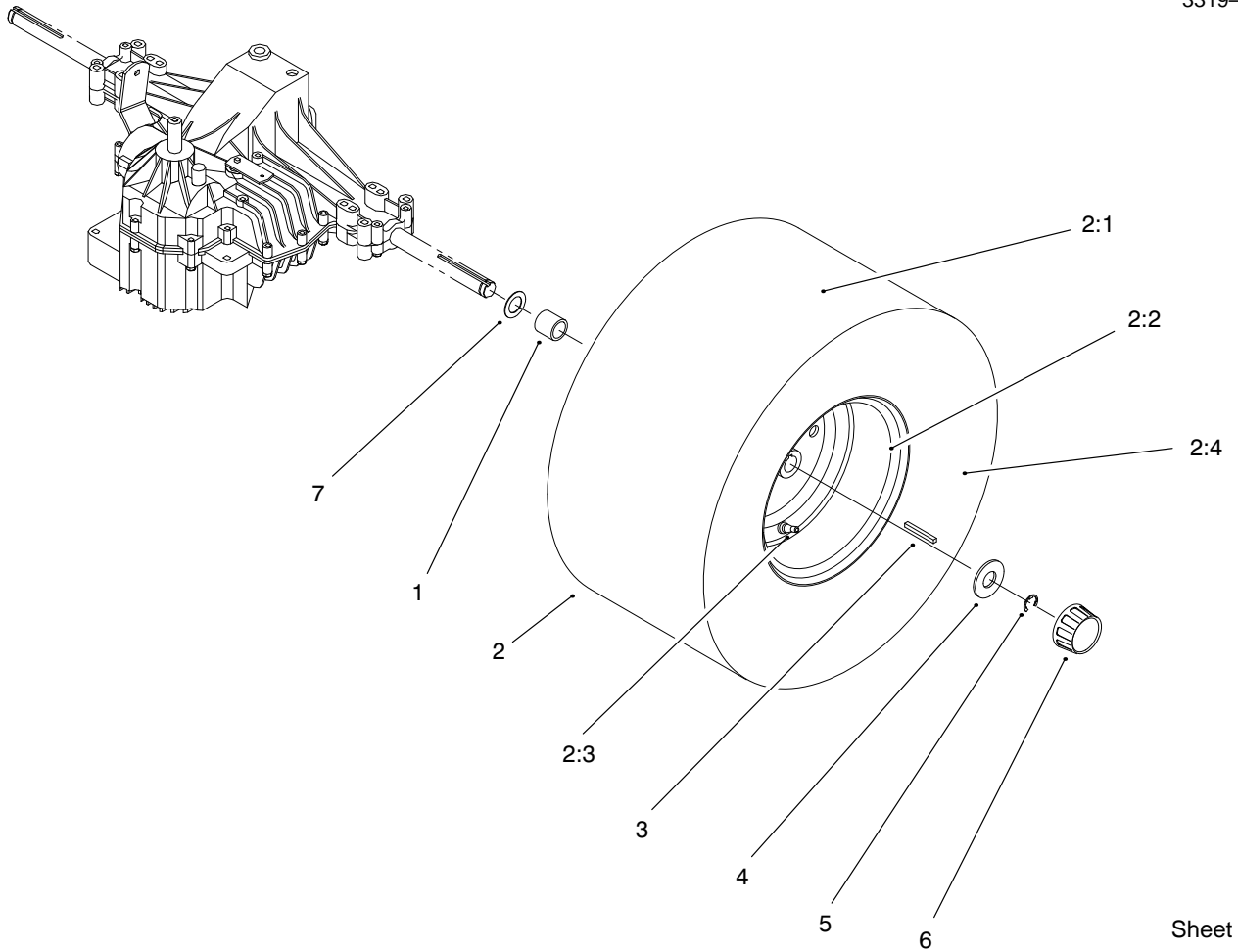
Ref. No.	Part No.	Qty.	Description
26	61-9780	2	Hubcap
27	3272-12	2	Pin-Cotter
28	28-2480	2	Washer-Flat
29	88-4280	2	Front Wheel & Tire ASM
29:1	88-4370	2	Rim ASM-15" Front
29:2	88-4070	2	Tire 15x6.00-6
29:3	232-27	2	Valve Stem & Cap Assembly
29:4	88-4400	2	Bearing - Wheel
29:5	302-5	2	Fitting - Grease
29:6	232-39	2	Tube - Inner 15x6-6
30	92-7889-03	1	Spindle Wa-RH
31	94-1990-03	1	Front Axle Wa
32	93-3873	1	Tie Rod Assy
33	32151-48	2	Ring-Retaining
34	93-3840	1	Link - Drag
35	88-5510	1	Rod-Parking Brake
36	88-5520-03	1	Bracket-Parking Brake
37	88-0890	1	Grip - Parking Brake
38	3-6498	4	Washer-Thrust



Sheet No.:7

Engine Assembly

Ref. No.	Part No.	Qty.	Description	Ref. No.	Part No.	Qty.	Description
1	88-4340	1	Throttle Control ASM	24	94-1952	1	Rod-Gas Tank
1:1	66-0120	1	Knob	25	3296-29	2	Nut-Lock
2	27-0220	2	Screw-Special HWH	26	88-4350	1	Cable ASM-Throttle
3	88-3880	1	Gas Tank Assembly	27	88-3980	1	Gas Cap ASM
3:1	104047	1	Bushing	28		1	Engine -16hp B & S Ohv Va
3:2	104048	1	Fuel Valve Assembly	29	94-3526	1	Decal-Engine
4	47-2963	1	Fuel Line	31	93-3809	1	Bracket-Ground
5	2412-98	2	Clamp-Hose	32	93-3880-03	1	Shield - Muffler
6	322-9	3	Screw-HH	33	93-8450-03	1	Exhaust Shield Wa
7	93-3854	3	Belt Guide - Engine	34	93-3882	1	Clip-Tinnerman
8	9267154	1	Screw	35	32104-76	2	Screw-Self TAP
9	5-4460	4	Washer-Fender	36	3255-8	1	Washer-Lock
10	322-5	2	Screw-HH	37	9266714	1	Screw-HWHTF
11	93-3832	1	Pulley - Engine (44")	38	3253-4	1	Washer-Lock
12	26-0671	1	Bolt-Blade	39	322-3	1	Screw-HH
13	3253-22	1	Washer-Lock	40	93-9911	1	Arrestor-Spark
14	3256-25	1	Washer-Flt	41	32144-42	1	Screw-HH TAP
15	93-3892	1	Muffler W.a.	42	88-4490	1	Reducer - Throttle Rpm (Only On: 71218)
16	3296-29	2	Nut-Lock	43	32144-112	2	Screw-Thd Form
17	9266714	2	Screw-HWHTF	44	94-1951	1	Latch-Hood
18	88-4410	1	Gasket - Muffler				
19	27-0220	2	Screw-Special HWH				
20	3274-10	2	Screw-Sckt Hd				
21	3253-4	2	Washer-Lock				
22	93-3855	1	Belt Guide - R.h.				
23	32149-1	2	Nut-Keps				

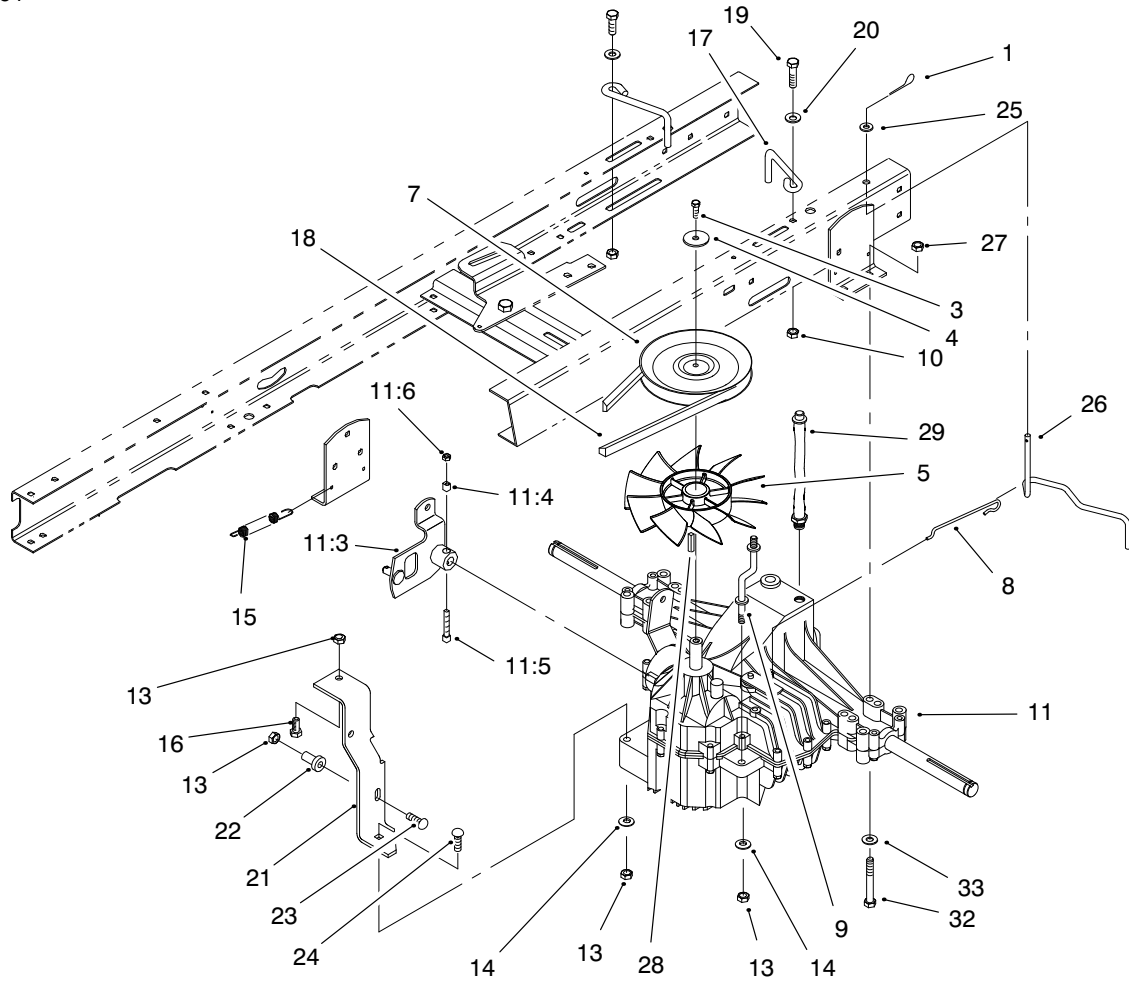


Sheet No.:9

Rear Axle Assembly

Ref. No.	Part No.	Qty.	Description
1	88-5360	2	Spacer – Pulley
2	93-3811	2	Rear Wheel & Tir ASM
2:1	93-0323	2	Tire – 20x10-8
2:2	88-4390	2	Rim ASM – 18" Rear
2:3	232-27	2	Valve Stem & Cap Assembly
2:4	93-3893	2	Tube – Inner 20x10-8
3	7-0036	2	Key-Square
4	28-2480	2	Washer-Flat
5	32151-48	2	Ring-Retaining
6	61-9780	2	Hubcap
7	3-6498	2	Washer-Thrust

Ref. No.	Part No.	Qty.	Description

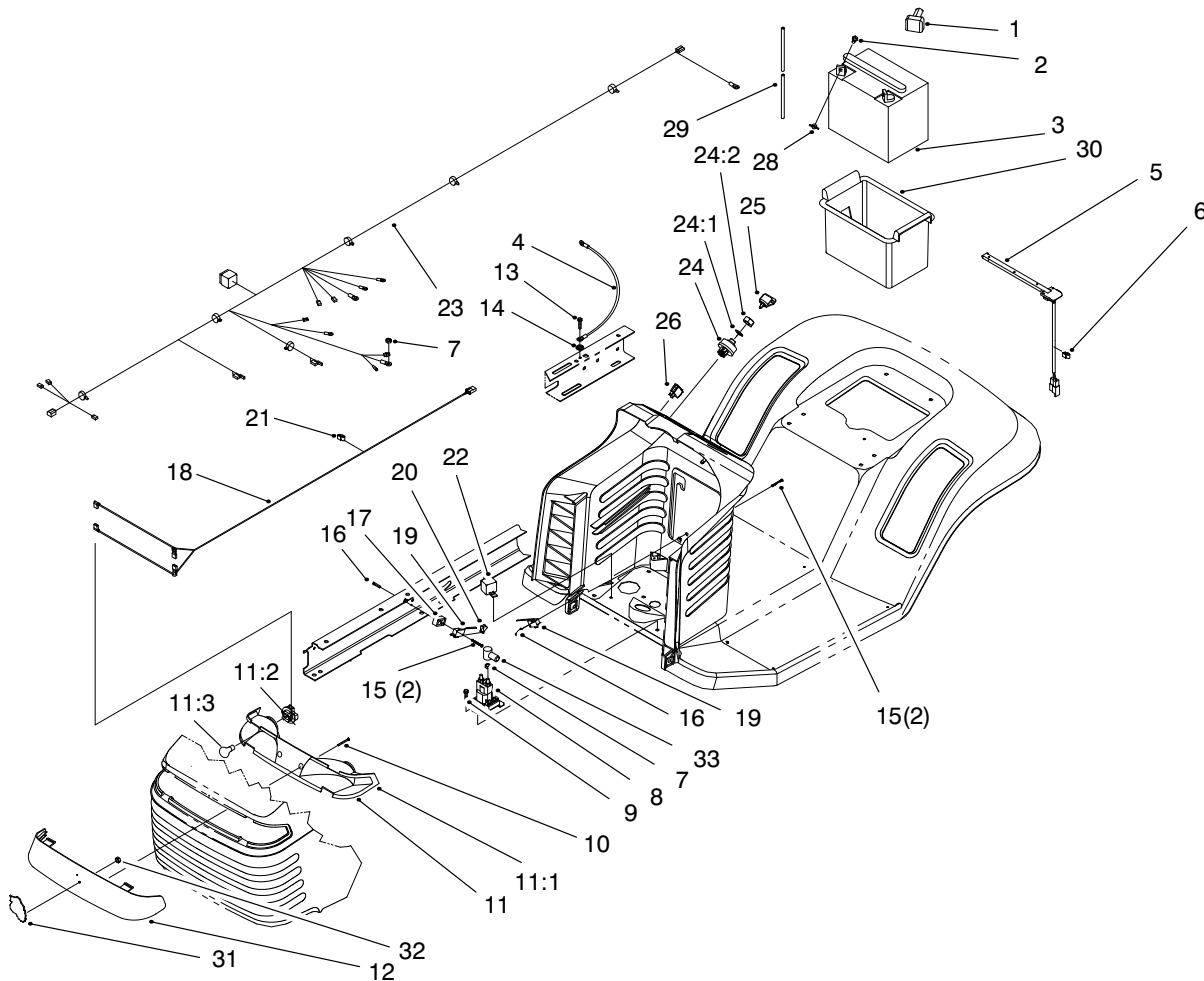


Sheet No.:10

Transaxle Assembly

Ref. No.	Part No.	Qty.	Description
1	3290-307	1	Pin-Cotter
3	48-7620	1	Screw
4	3256-58	1	Washer-Flt
5	93-3867	1	Fan - Hydro (7"-10bld)
7	93-3862	1	Pulley-Transmission
8	92-8856	1	Wire - Bypass
9	93-3872	1	Strap - Torque
10	3296-29	2	Nut-Lock
11	95-2727	1	Transaxle ASM - Hydro
11:3	93-3870	1	Lever - Speed Control
11:4	86-4270	1	Spacer - Lock
11:5	3274-59	1	Screw - HSH
11:6	3296-12	1	Nut - Lock
13	3296-29	5	Nut-Lock
14	3256-23	3	Washer-Flat
15	26-6701	1	Spring - Extension
16	322-3	1	Screw-HH
17	93-3868	2	Belt Guide - Trans
18	93-3883	1	V-Belt
19	322-5	2	Screw-HH
20	5-4460	2	Washer-Fender
21	93-3863-03	1	Bracket - Speed Control
22	65-5080	1	Bushing - Flanged

Ref. No.	Part No.	Qty.	Description
23	3230-5	1	Bolt-Carriage
24	3230-7	1	Bolt-Carriage
25	3256-22	1	Washer-Flat
26	92-8857	1	Lever - Bypass
27	3296-29	4	Nut-Lock
28	80-6090	1	Key-Square
29	94-1945	1	ASM-Breather Hose
32	322-12	4	Screw HH
33	3256-23	4	Washer-Flat

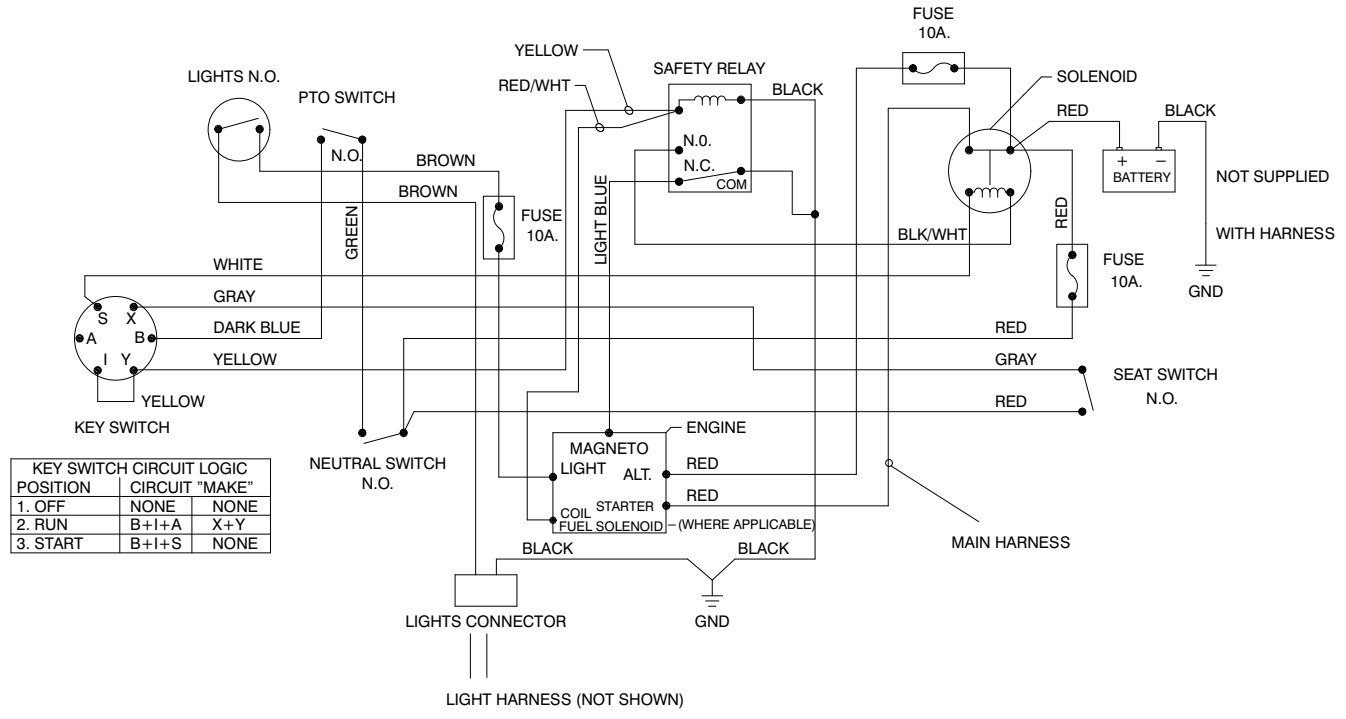


Sheet No.:13

Electrical Assembly

Ref. No.	Part No.	Qty.	Description
1	28-8080	1	Boot-Battery Terminal
2	321-4	2	Screw-HH
3	80-2600	1	Battery - 7 Plate
4	44-8110	1	Battery Cable -Neg
5	38-1420	1	Switch-Seat
6	702366	1	Clip-Wire Retainer
7	32149-2	3	Nut-Hex Lock
8	92-9845	1	Solenoid
9	9266714	2	Screw-HWHTF
10	32144-32	2	Screw-Plastic
11	88-3970	1	Reflector-Lamp
11:1	93-8741	1	Reflector - Headlight
11:2	111686	2	Socket Assembly
11:3	7227	2	Bulb - Light
12	88-3960	1	Lense - Headlights
13	9266714	1	Screw-HWHTF
14	3255-7	1	Washer-Lock
15	93-0539	4	Screw-PPH
16	3290-354	2	Nut-Speed
17	88-4880	1	Spacer - Microswitch
18	88-4320	1	Harness-Wire
19	88-9932	2	Switch - Micro
20	93-3240	1	Seal-Plunger
21	702366	2	Clip-Wire Retainer
22	116397	1	Relay
23	93-3810	1	Wire Harness

Ref. No.	Part No.	Qty.	Description
24	88-9830	1	Switch-Ignition
24:1	3254-5	1	Washer - Lock
24:2	218-461	1	Nut - HH
25	63-8360	1	Key-Ignition
26	92-8875	1	Switch-Rocker
28	32103-22	2	Nut-Wing
29	56-2540	1	Tube-Vent Use w/80-2600
30	88-4040	1	Battery Box
31	80-2240	1	Plate-Name Grille
32	3290-299	1	Nut - Tinnerman
33	94-5362	1	Boot-Terminal Insulator



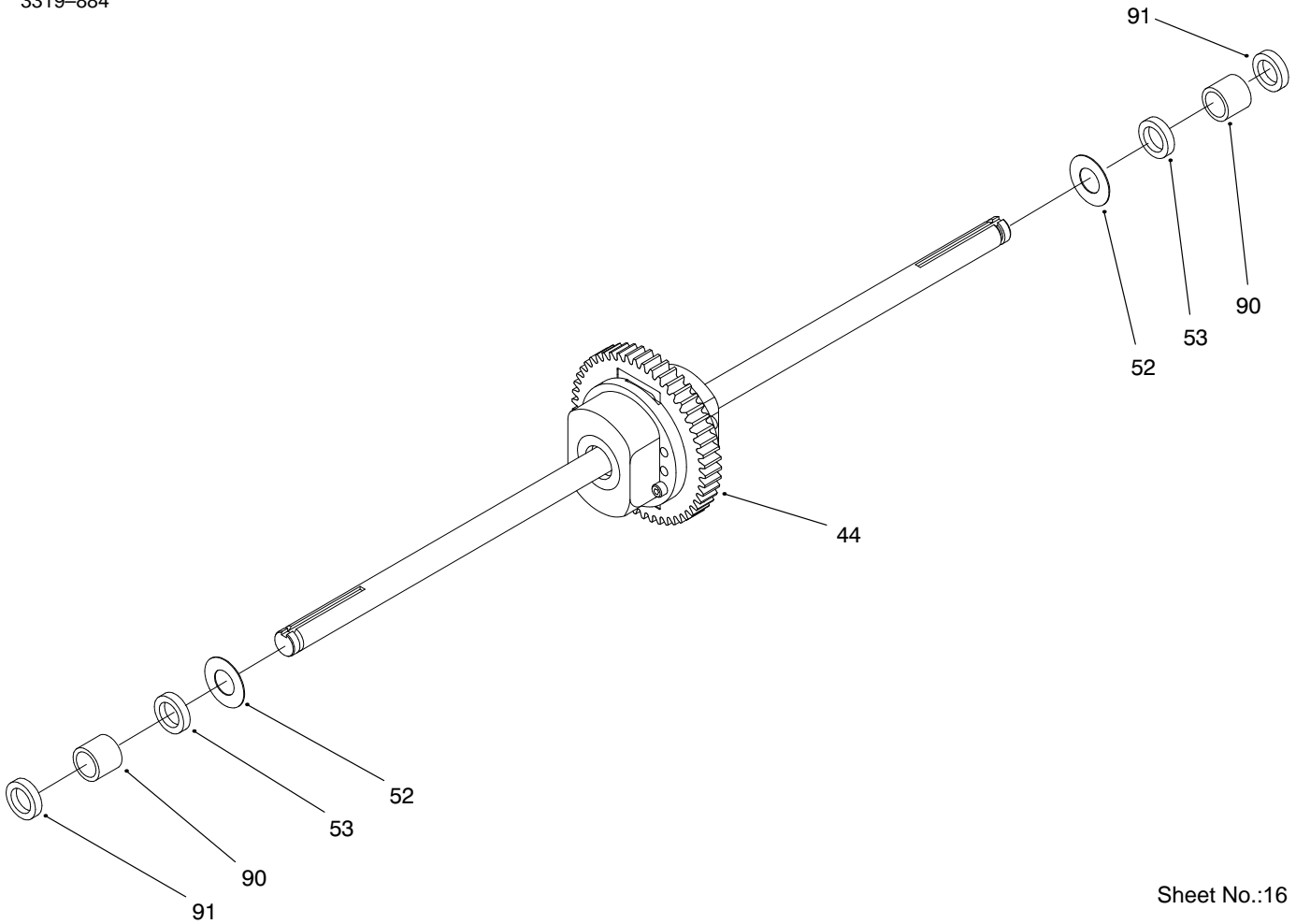
WIRING SCHEMATIC

Sheet No.:14

Electrical Schematic

Ref. No.	Part No.	Qty.	Description
1	218-578	3	Fuse-10 Amp

Ref. No.	Part No.	Qty.	Description

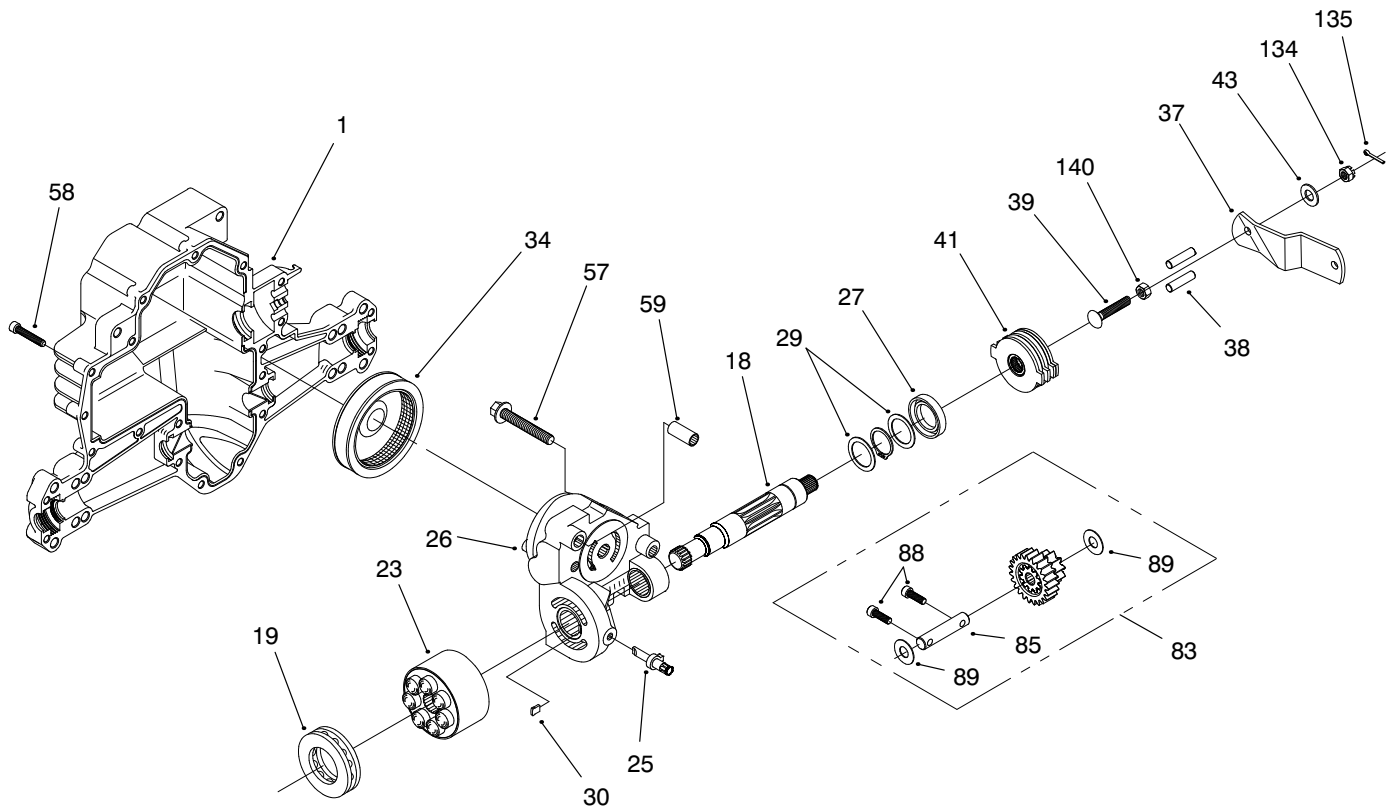


Sheet No.:16

Hydro Transaxle Assembly (Continued)

Ref. No.	Part No.	Qty.	Description
44	95-3269	1	Differential ASM
52	94-1943	2	Washer
53	94-1924	2	Seal
90	94-1934	2	Sleeve - Bearing
91	94-1935	2	Seal - Wiper

Ref. No.	Part No.	Qty.	Description

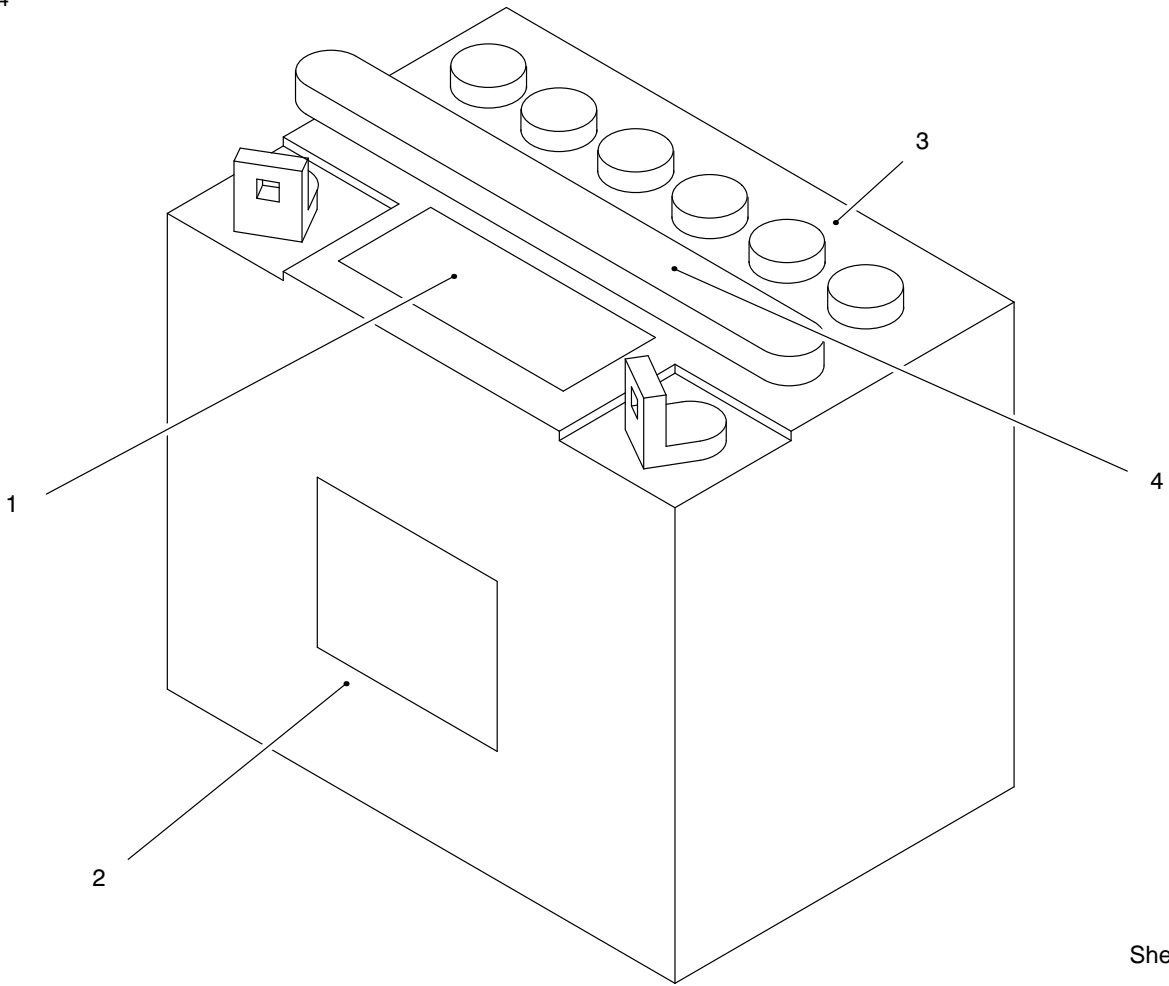


Sheet No.:17

Hydro Transaxle Assembly (Continued)

Ref. No.	Part No.	Qty.	Description
1	94-1900	1	Housing – Lower
18	94-6955	1	Shaft – Motor
19	94-6923	1	Bearing – Thrust
23	94-1913	1	Block – Cylinder ASM
25	94-1914	1	Actuator – Bypass
26	94-1915	1	Centersection ASM
27	94-1916	1	Seal – Lip
28	94-1917	1	Ring – Retaining
29	94-1918	2	Washer
30	94-6925	1	Bypass Plate
34	94-1920	1	Oil Filter Element
37	93-3861	1	Lever – Brake
38	92-6549	1	Pin – Actuating
39	94-1923	1	Bolt
41	94-1919	4	Bolt Rotor/Starter Kit
43	5-4460	1	Washer – Fender
57	94-6926	3	Bolt
58	94-1926	21	Bolt
59	94-1927	2	Pin
83	94-1930	1	Jackshaft/Pinion Gear ASM
85	94-6956	1	Jackshaft
88	94-1932	2	Capscrew
89	94-1933	2	Washer
134	93-3807	1	Nut – Castle

Ref. No.	Part No.	Qty.	Description
135	3272-7	1	Pin – Cotter
140	3296-20	1	Nut – Lock Insert

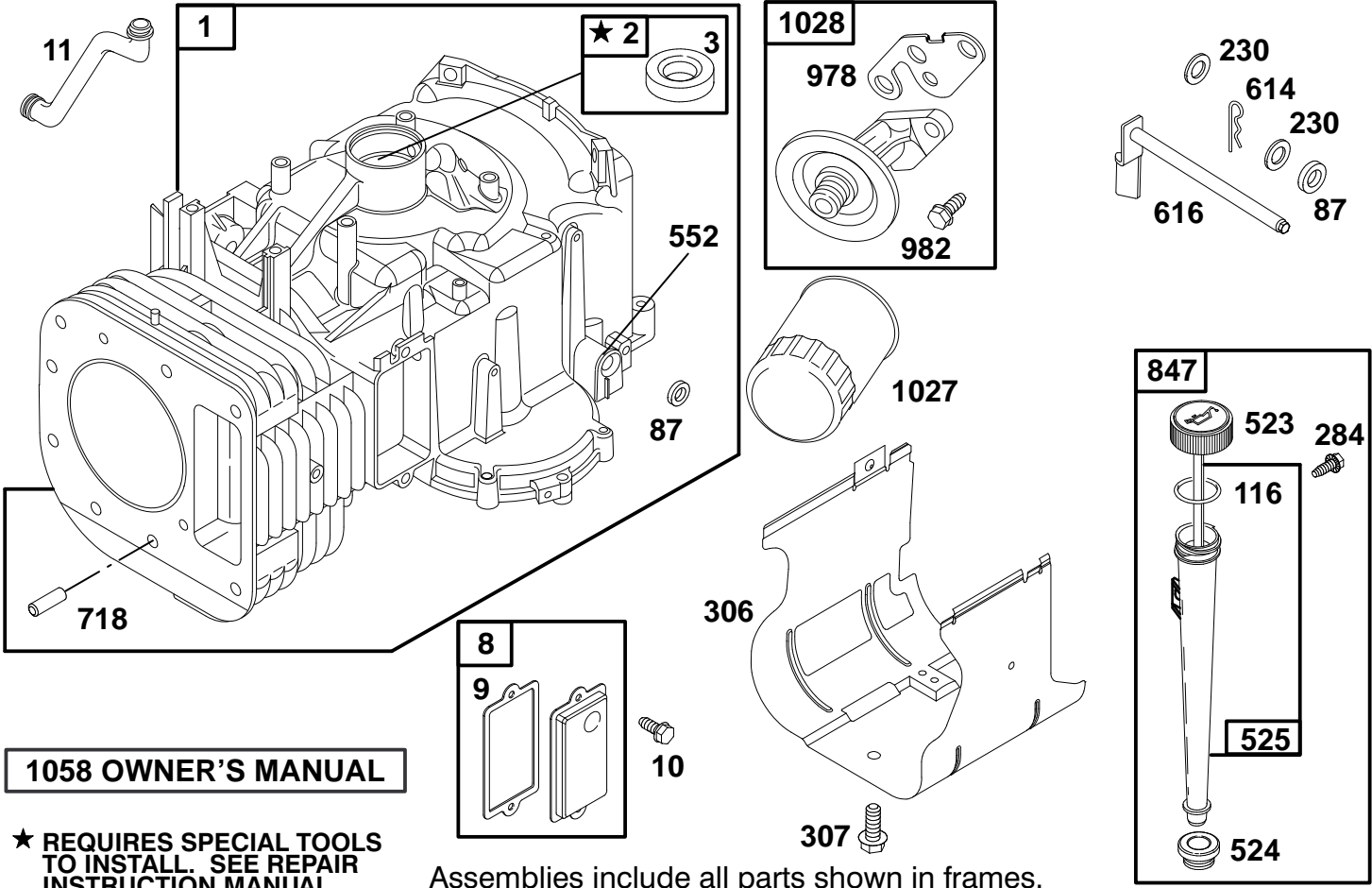


Sheet No.:18

Battery Assembly

Ref. No.	Part No.	Qty.	Description
1	93-7276	1	Decal - Danger
2	93-6668	1	Decal - Battery Charge Inst.
3	218-560	6	Cap - Battery
4	93-9354	1	Decal - Battery

Ref. No.	Part No.	Qty.	Description



1058 OWNER'S MANUAL

★ **REQUIRES SPECIAL TOOLS TO INSTALL. SEE REPAIR INSTRUCTION MANUAL.**

Assemblies include all parts shown in frames.

ENGINE BRIGGS & STRATTON MODEL 28Q777-0668-E1

Ref. No.	Part No.	Description	No. Used
1	496412	Cylinder Assembly	1
2	399265	Bearing-Cylinder	1
★3	391086	Seal-Oil	1
8	495735	Breather Assembly	1
★9	27803	Gasket-Valve Cover	1
10	94621	Screw-Sem	1
11	281246	Tube-Breather	1
★87	491323	Seal-Governor	1
★116	270920	Seal-Oil Fill Cap	1
230	94927	Washer-Governor Lever	1
284	94903	Screw-Hex. Head	1
306	225020	Shield-Cylinder	1
307	94930	Screw-Self Tap	1
523	495230	Cap-Oil Fill	1

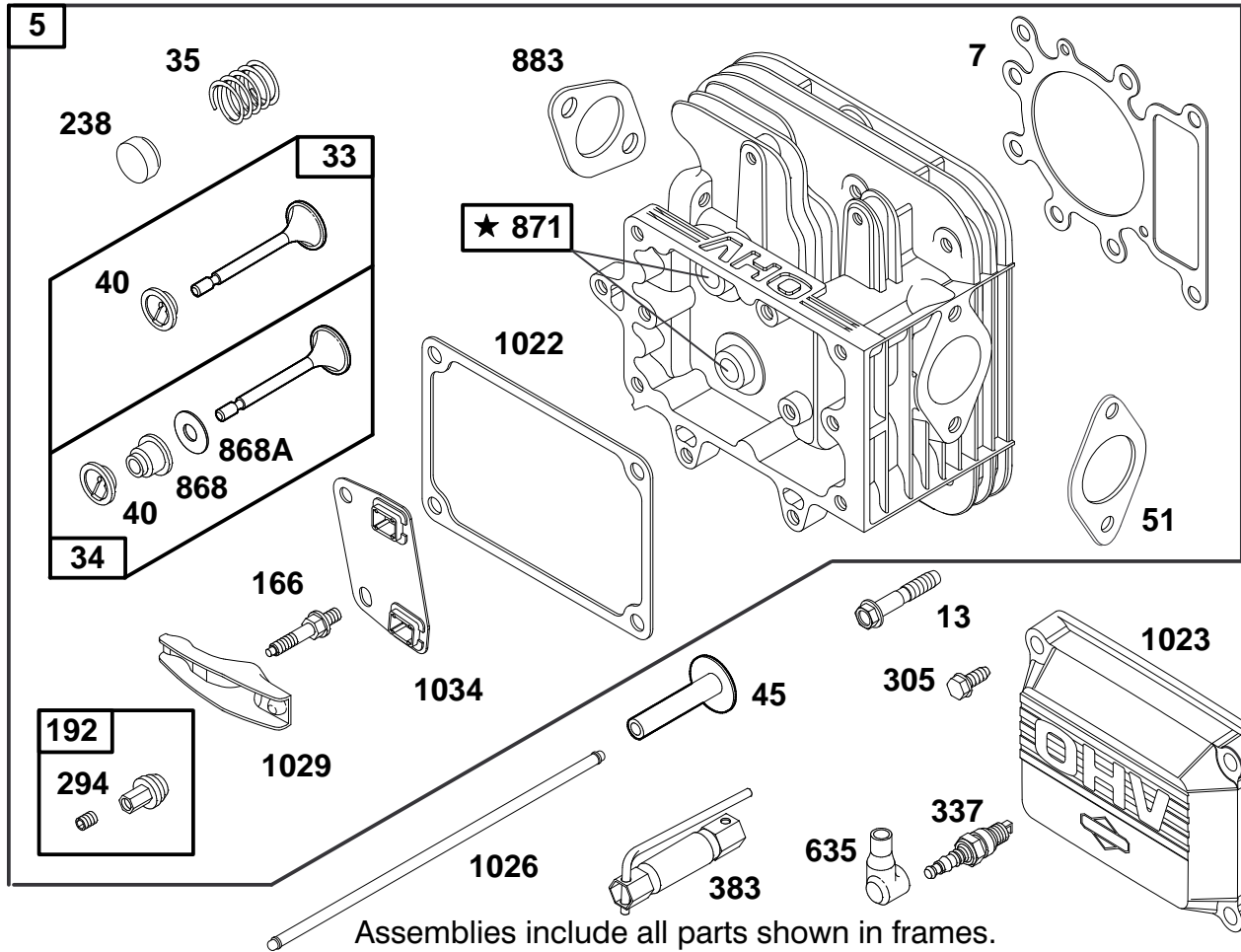
Ref. No.	Part No.	Description	No. Used
★524	281370	Seal-Fill Tube	1
525	496113	Tube-Oil Fill	1
552	491986	Bushing-Gov. Crank Note: Includes Seal, Ref. No. 87	1
614	93306	Pin-Cotter	1
616	495157	Crank-Governor	1
718	230192	Pin-Dowel	1
847	496415	Fill Group-Oil	1
978	272888	Gasket-Filter Adapter	1
982	94899	Screw-Hex. Head	1
1027	492932	Filter-Oil	1
1028	496744	Adapter-Filter	1
1058	273683	Owner's Manual	1

★ Included in Gasket Set-Part No. 495993.

Δ Included in Valve Overhaul Kit-Part No. 495992.

● Included in Carburetor Kit-Part No. 499233.

◆ Included in Carburetor Gasket Set-Part No. 494385.



ENGINE BRIGGS & STRATTON MODEL 28Q777-0668-E1

Ref. No.	Part No.	Description	No. Used
5	495858	Head-Cylinder	1
Δ★7	273280	Gasket-Cylinder Head	1
13	94728	Screw-Cylinder Head	1
33	495856	Valve-Exhaust	1
34	495857	Valve-Intake	1
35	262811	Spring-Valve	1
40	224641	Retainer-Valve	1
45	262411	Tappet-Valve	1
Δ★51	272569	Gasket-Intake	1
166	94555	Stud-Rocker Arm	1
192	492160	Adjuster-Valve	1
238	262836	Cap-Valve	1
294	810104	Screw-Set	1
305	94786	Screw-Hex. Head	1
337	491055	Plug-Spark	1

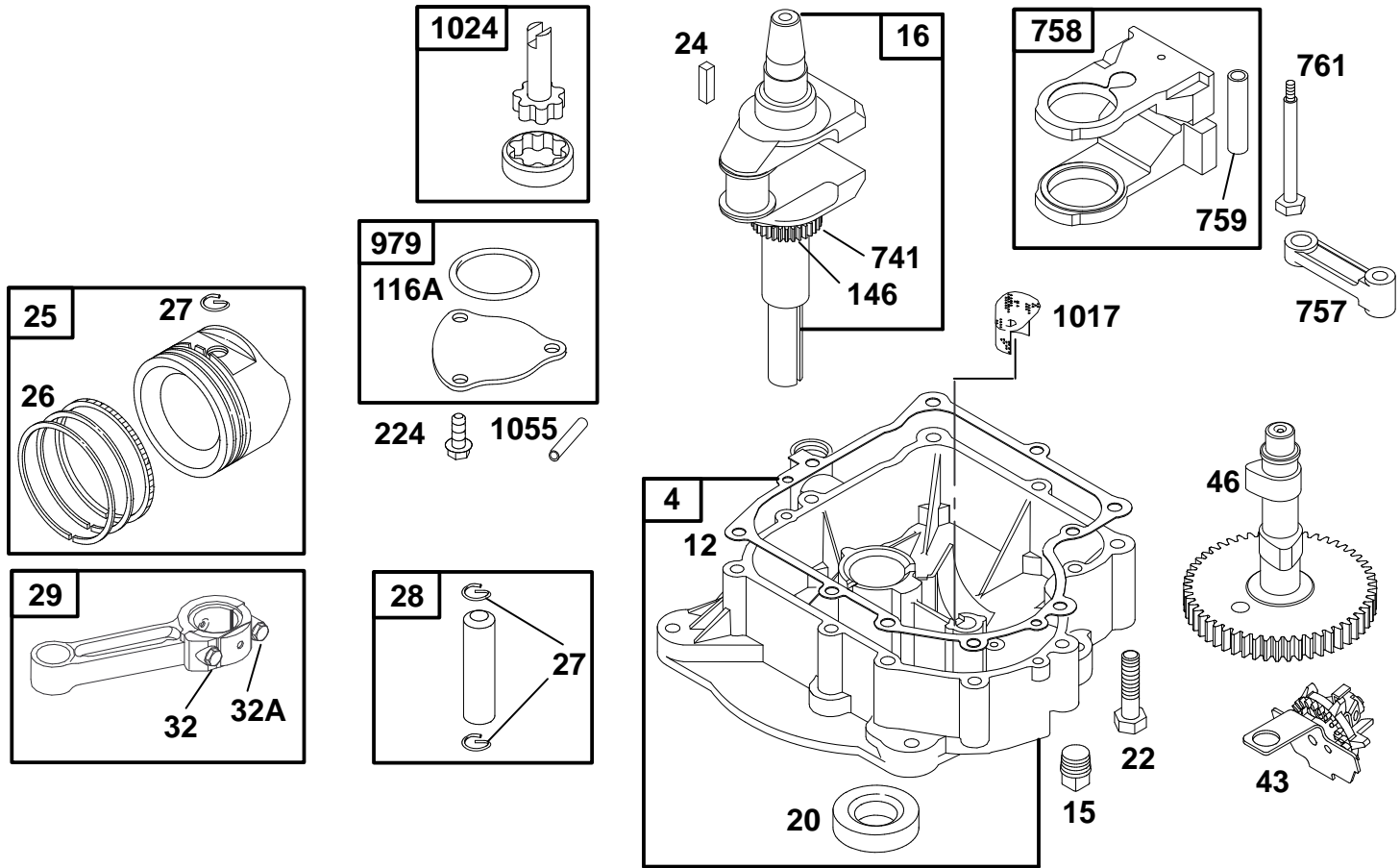
Ref. No.	Part No.	Description	No. Used
383	89838	Wrench-Spark Plug	1
635	280872	Elbow-Spark Plug	1
Δ★868	494435	Seal-Valve	1
Δ★868A	272610	Seal-Valve	1
871	262835	Bushing-Guide (Intake and Exhaust)	1
Δ★883	272293	Gasket-Exhaust	1
Δ★1022	272475	Gasket-Rocker Cover	1
1023	214314	Cover-Rocker	1
1026	494432	Rod-Push (Intake) Note: 495136 Rod-Push (Exhaust)	1
1029	224554	Arm-Rocker	1
1034	495248	Guide-Push Rod	1

★ Included in Gasket Set-Part No. 495993.

Δ Included in Valve Overhaul Kit-Part No. 495992.

● Included in Carburetor Kit-Part No. 499233.

◆ Included in Carburetor Gasket Set-Part No. 494385.



Assemblies include all parts shown in frames.

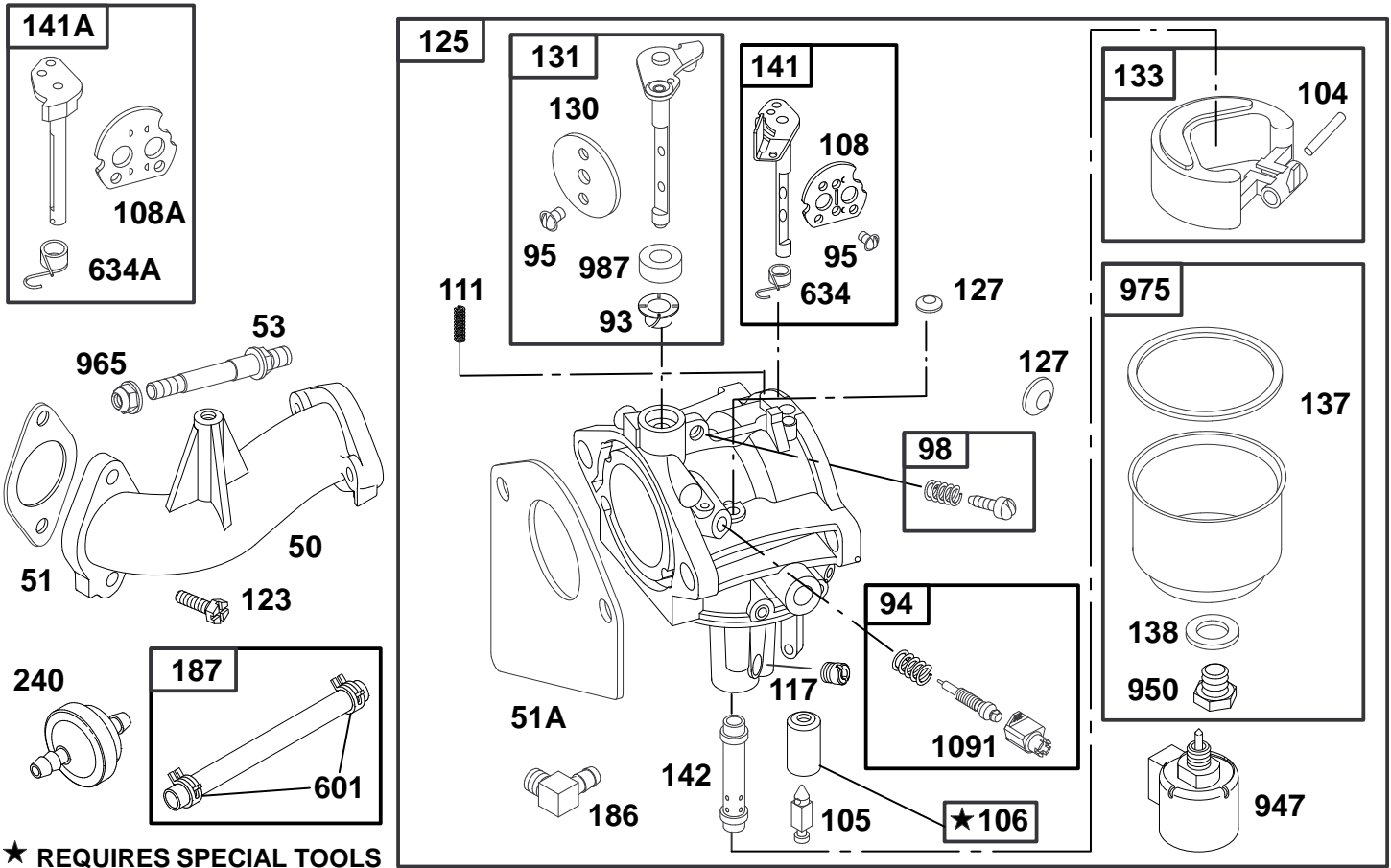
ENGINE BRIGGS & STRATTON MODEL 28Q777-0668-E1

Ref. No.	Part No.	Description	No. Used
4	496742	Base-Engine	1
★12	271916	Gasket-Crankcase (.015" Thick, Std.)	1
★	271997	Gasket-Crankcase (.005" Thick)	1
★	271996	Gasket-Crankcase (.009" Thick)	1
15	94239	Plug-Oil Drain	1
16	498971	Crankshaft	1
★20	291675	Seal-Oil	1
22	94624	Screw-Sem	1
24	222698	Key-Flywheel	1
25	495860	Piston Assembly (Standard)	1
	495977	Piston Assy. (.010" O.S.)	1
	495978	Piston Assy. (.020" O.S.)	1
	495979	Piston Assy. (.030" O.S.)	1
26	495854	Ring Set (Standard)	1
	495852	Ring Set (.010" O.S.)	1
	495851	Ring Set (.020" O.S.)	1
	495855	Ring Set (.030" O.S.)	1
27	263129	Lock-Piston Pin	1
28	498319	Pin-Piston (Standard)	1
	498320	Pin-Piston (.005" O.S.)	1

Ref. No.	Part No.	Description	No. Used
29	494504	Rod-Connecting (Standard)	1
	495490	Rod-Conn. (.020" U.S.)	1
32	94695	Screw-Conn. Rod (1 7/8" Long)	1
32A	94648	Screw-Conn. Rod (1 5/8" Long)	1
43	490815	Governor/Oil Slinger	1
46	496885	Gear-Cam	1
★116A	281402	Seal-O-Ring	1
146	94196	Key-Timing Gear	1
224	94905	Screw-Torx® Hex.	1
741	262932	Gear-Timing	1
757	213998	Link-Counterweight	1
758	399891	Counterweight Assy.	1
759	230787	Pin-Counterweight	1
761	94593	Screw-Counterweight	1
979	496745	Cover-Pump	1
1017	225076	Screen-Oil Pump	1
1024	493884	Pump-Oil	1
1055	231931	Tube-Oil Pump	1

★ Included in Gasket Set-Part No. 495993.
 ▲ Included in Valve Overhaul Kit-Part No. 495992.

● Included in Carburetor Kit-Part No. 499233.
 ◆ Included in Carburetor Gasket Set-Part No. 494385.



★ REQUIRES SPECIAL TOOLS TO INSTALL. SEE REPAIR INSTRUCTION MANUAL. Assemblies include all parts shown in frames.

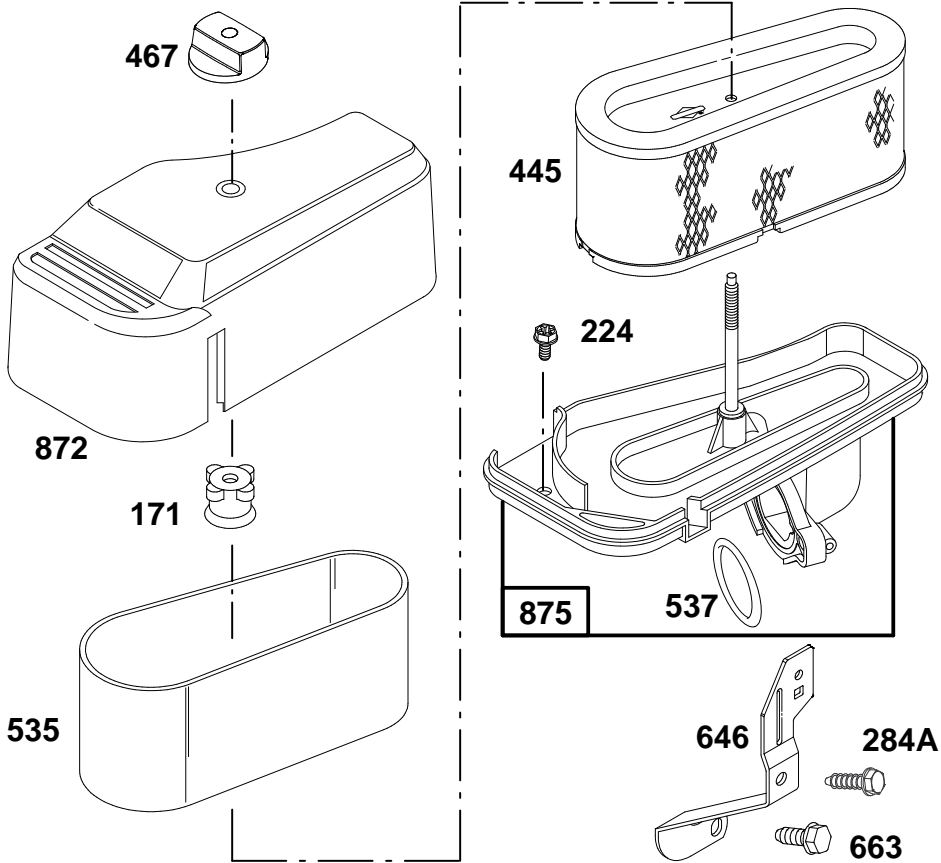
ENGINE BRIGGS & STRATTON MODEL 28Q777-0668-E1

Ref. No.	Part No.	Description	No. Used
50	214047	Manifold-Intake	1
Δ★51	272569	Gasket-Carburetor	1
◆51A	272465	Gasket-Carburetor	1
53	94637	Stud-Carb. Mtg.	1
●93	281346	Bushing-Throttle Shaft	1
●95	94098	Screw-Round Head	1
94	498030	Valve-Idle Adjust	1
98	495800	Screw-Idle Adjust	1
●104	231789	Pin-Float Hinge	1
●105	231855	Valve-Inlet Needle	1
●106	231854	Seat-Inlet	1
108	224558	Valve-Choke (Manual)	1
108A	224540	Valve-Choke (Remote)	1
111	262715	Spring-Friction	1
●117	232118	Jet-Main (Standard)	1
	232119	Jet-Main (High Altitude)	1
123	94913	Screw-Elbow Mtg.	1
125	499153	Carburetor	1
●127		Plug-Welch (Sold in Kit Only)	1
130	224539	Valve-Throttle	1

Ref. No.	Part No.	Description	No. Used
131	494379	Shaft-Throttle	1
133	494381	Float-Carburetor	1
◆137	281165	Gasket-Float Bowl	1
◆138	281164	Washer-Float Bowl	1
141	495097	Shaft-Choke (Manual)	1
141A	495931	Shaft-Choke (Remote)	1
●142	232117	Nozzle-Carburetor	1
186	493496	Elbow-Fuel Pipe	1
187	298049	Line-Fuel (Cut to Length)	1
240	394358	Filter-Fuel	1
601	93053	Clamp-Hose	1
●634	494453	Seal-Spring Assembly	1
●634A	494455	Seal-Spring Assembly	1
947	497672	Solenoid	1
950	94642	Screw-Fuel Bowl	1
965	94010	Nut-Hex.	1
975	495933	Bowl-Float	1
●987	281166	Seal-Throttle Shaft	1
1091	281364	Cap-Limiter	1

★ Included in Gasket Set-Part No. 495993.
 Δ Included in Valve Overhaul Kit-Part No. 495992.

● Included in Carburetor Kit-Part No. 499116.
 ◆ Included in Carburetor Gasket Set-Part No. 494385.



Assemblies include all parts shown in frames.

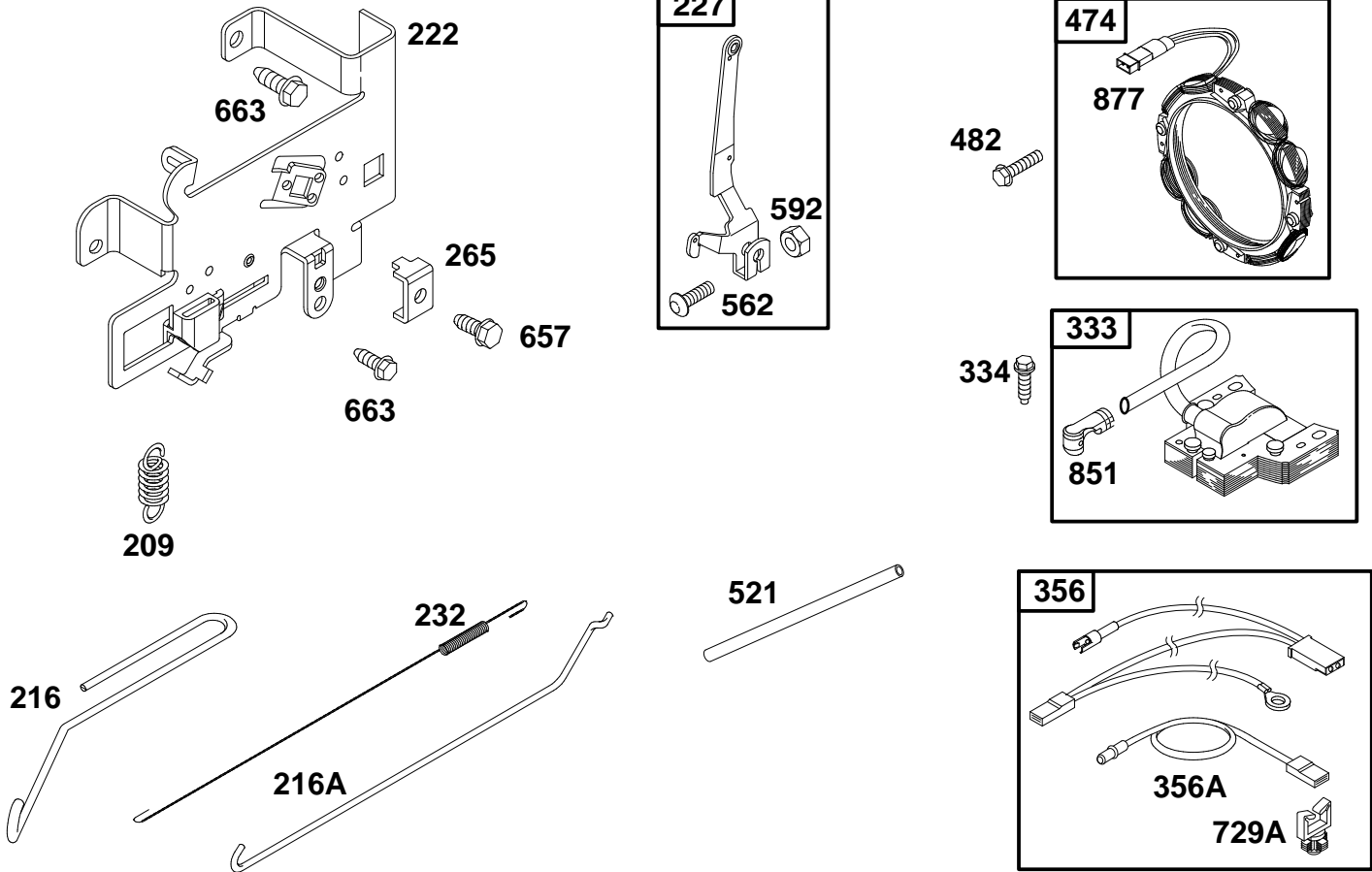
ENGINE BRIGGS & STRATTON MODEL 28Q777-0668-E1

Ref. No.	Part No.	Description	No. Used
171	281051	Nut-Air Cleaner Mtg.	1
224	94905	Screw-Torx® Hex.	1
284A	94704	Screw-Hex. Hd.	1
445	496894	Filter-Air	1
467	493903	Knob-Air Cleaner	1
535	272403	Filter-Air	1

Ref. No.	Part No.	Description	No. Used
★537	281106	Gasket-Air Cleaner	1
646	224546	Brace-Air Cleaner	1
663	94929	Screw-Hex. Hd.	1
872	281365	Cover-Air Cleaner	1
875	495862	Body-Air Cleaner	1

★ Included in Gasket Set-Part No. 495993.
 Δ Included in Valve Overhaul Kit-Part No. 495992.

● Included in Carburetor Kit-Part No. 499233.
 ◆ Included in Carburetor Gasket Set-Part No. 494385.



Assemblies include all parts shown in frames.

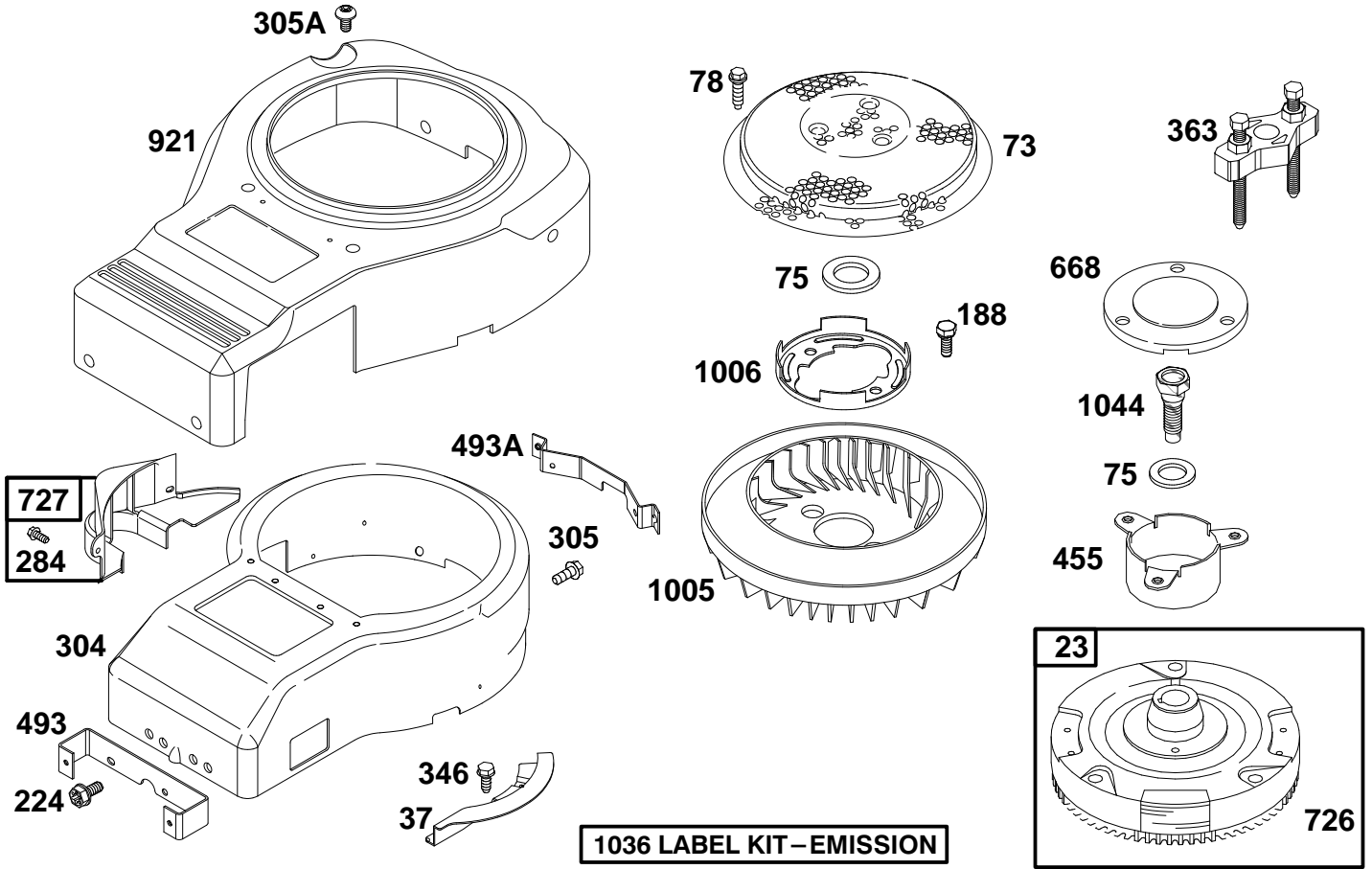
ENGINE BRIGGS & STRATTON MODEL 28Q777-0668-E1

Ref. No.	Part No.	Description	No. Used
209	260695	Spring-Governor	1
216	262766	Link-Choke	1
216A	262767	Link-Governor	1
222	495611	Plate-Gov. Control	1
227	493935	Lever Assy.-Governor	1
232	262785	Spring-Governor Link	1
265	221535	Clamp-Casing	1
333	495859	Armature-Magneto	1
334	94731	Screw-Sem	1
356	497708	Wire-Stop	1
356A	494705	Wire-Ground	1

Ref. No.	Part No.	Description	No. Used
474	393474	Alternator	1
482	93621	Screw-Sem	1
521	272699	Shield-Cable	1
562	94907	Bolt-Governor Lever	1
592	231978	Nut-Hex.	1
657	94906	Screw-Sem	1
663	94929	Screw-Hex. Hd.	1
729A	281390	Clip-Lead Wire	1
851	493880	Terminal-Ignition Cable	1
877	393456	Wire-Alternator	1

★ Included in Gasket Set-Part No. 495993.
 △ Included in Valve Overhaul Kit-Part No. 495992.

● Included in Carburetor Kit-Part No. 499233.
 ◆ Included in Carburetor Gasket Set-Part No. 494385.



Assemblies include all parts shown in frames.

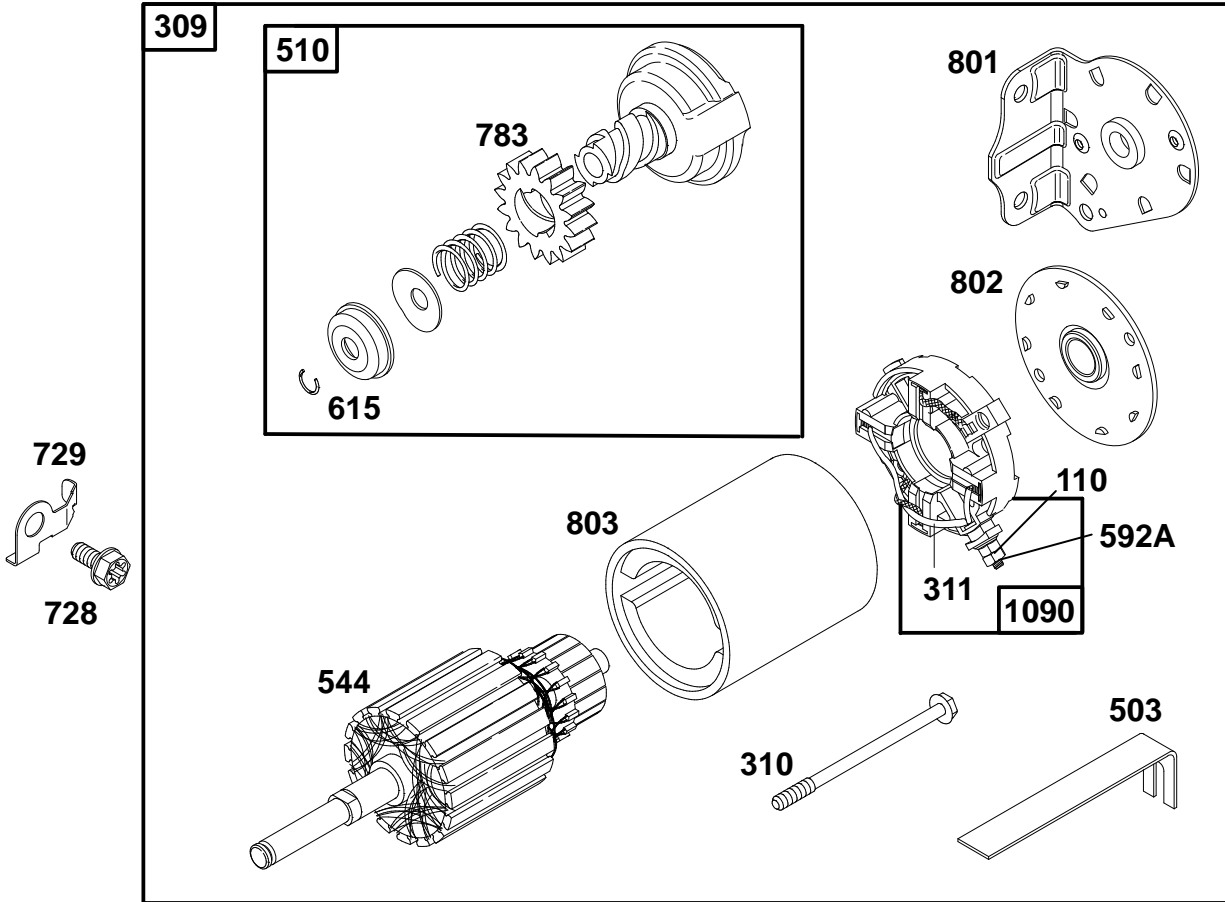
ENGINE BRIGGS & STRATTON MODEL 28Q777-0668-E1

Ref. No.	Part No.	Description	No. Used
23	492326	Flywheel	1
37	224502	Guard-Flywheel	1
73	224948	Screen-Rotating	1
75	225136	Washer-Spring	1
78	94626	Screw-Sem	1
188	94627	Screw-Sem	1
224	94905	Screw-Torx® Hex.	1
284	94903	Screw-Hex. Head	1
304	225017	Housing-Blower	1
305	94786	Screw-Hex. Head	1
305A	94822	Screw-Torx®	1
346	94896	Screw-Hex. Head	1
363	19203	Puller-Flywheel	1

Ref. No.	Part No.	Description	No. Used
455	222561	Cup-Flywheel	1
493	224968	Bracket-Mounting	1
493A	224969	Bracket-Mounting	1
668	280848	Spacer	1
726	399676	Gear-Ring (Includes Mtg. Hardware)	1
727	490324	Guard-Flywheel	1
921	225016	Cover-Blower Housing	1
1005	281400	Fan-Flywheel	1
1006	224413	Retainer-Fan	1
1036	499364	Label Kit-Emission	1
1044	94673	Screw-Shoulder	1

★ Included in Gasket Set-Part No. 495993.
 Δ Included in Valve Overhaul Kit-Part No. 495992.

◆ Included in Carburetor Kit-Part No. 499233.
 ◆ Included in Carburetor Gasket Set-Part No. 494385.



Assemblies include all parts shown in frames.

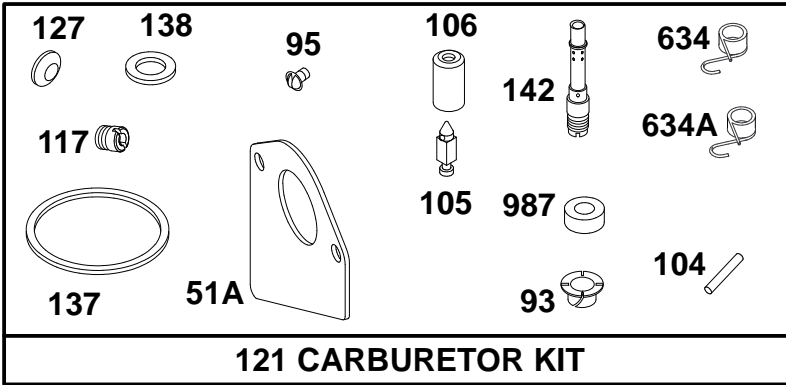
ENGINE BRIGGS & STRATTON MODEL 28Q777-0668-E1

Ref. No.	Part No.	Description	No. Used
110	225137	Washer	1
309	497595	Motor-Starter	1
310	94003	Bolt-Thru	1
311	497608	Brush Set	1
503	806000	Strap-Starter	1
510	497606	Drive-Starter	1
544	497603	Armature-Starter	1
592A	92278	Nut-Hex.	1

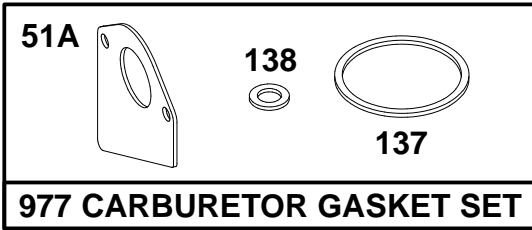
Ref. No.	Part No.	Description	No. Used
615	263080	Retainer	1
728	94951	Screw-Torx®	1
729	225170	Clip-Wire	1
783	280104	Gear-Starter	1
801	394856	Cap-Drive	1
802	497607	Plate-Cover	1
803	497604	Housing-Starter	1
1090	497605	Cap-End	1

★ Included in Gasket Set-Part No. 495993.
 △ Included in Valve Overhaul Kit-Part No. 495992.

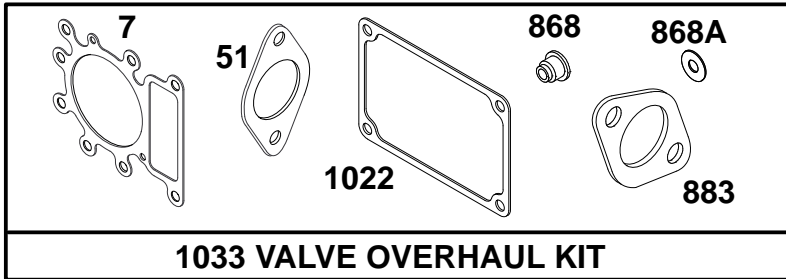
● Included in Carburetor Kit-Part No. 499233.
 ◆ Included in Carburetor Gasket Set-Part No. 494385.



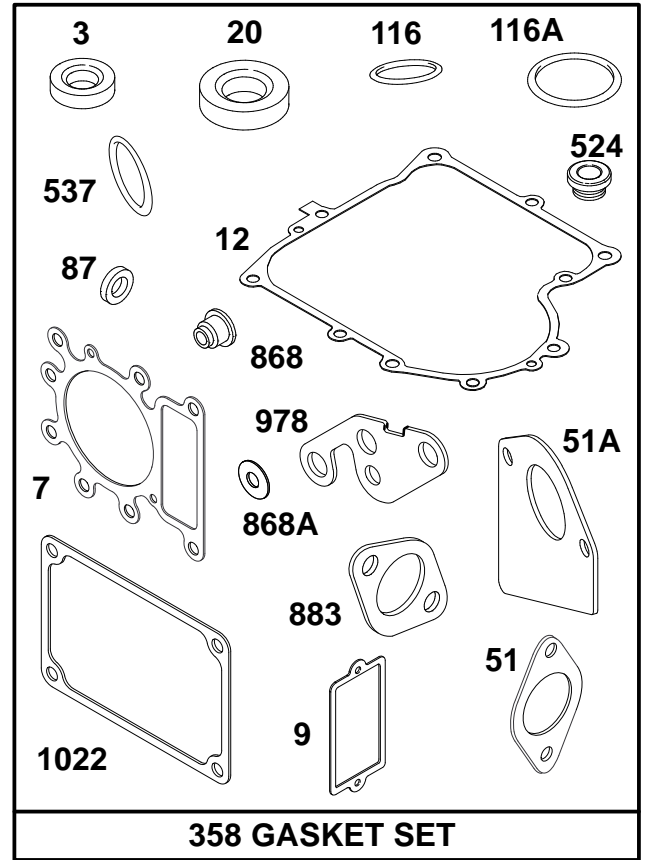
121 CARBURETOR KIT



977 CARBURETOR GASKET SET



1033 VALVE OVERHAUL KIT



358 GASKET SET

Assemblies include all parts shown in frames.

ENGINE BRIGGS & STRATTON MODEL 28Q777-0668-E1

Ref. No.	Part No.	Description	No. Used
★3	391086	Seal-Oil	1
△★7	273280	Gasket-Cylinder Head	1
★9	27803	Gasket-Valve Cover	1
★12	271916	Gasket-Crankcase (.015" Thick)	1
★	271997	Gasket-Crankcase (.005" Thick)	1
★	271996	Gasket-Crankcase (.009" Thick)	1
★20	291675	Seal-Oil	1
△★51	272569	Gasket-Carburetor	1
◆★51A	272465	Gasket-Carburetor	1
★87	491323	Seal-Governor	1
●93	281346	Bushing-Throttle Shaft	1
●95	94098	Screw-Throttle	1
●104	231789	Pin-Float Hinge	1
●105	231855	Valve-Inlet Needle	1
●106	231854	Seat-Inlet	1
★116	270920	Seal-O-Ring	1
★116A	281402	Seal-O-Ring	1
●117	232118	Jet-Main	1

Ref. No.	Part No.	Description	No. Used
121	499233	Carburetor Kit	1
●127		Plug-Welch (Sold in Kit Only).	1
◆◆137	281165	Gasket-Float Bowl	1
◆◆138	281164	Washer-Float Bowl	1
●142	232117	Nozzle-Carburetor	1
358	495993	Gasket Set	1
★524	281370	Seal-Fill Tube	1
★537	281106	Gasket-Air Cleaner	1
●634	494453	Seal-Spring Assembly	1
●634A	494555	Seal-Spring Assembly	1
△★868	494435	Seal-Valve	1
△★868A	272610	Seal-Valve	1
△★883	272293	Gasket-Exhaust	1
977	494385	Carburetor Gasket Set	1
★978	272888	Gasket-Filter Adapter	1
●987	281166	Seal-Throttle Shaft	1
△★1022	272475	Gasket-Rocker Cover	1
1033	495992	Kit-Valve Overhaul	1

★ Included in Gasket Set-Part No. 495993.
 △ Included in Valve Overhaul Kit-Part No. 495992.

● Included in Carburetor Kit-Part No. 499233.
 ◆ Included in Carburetor Gasket Set-Part No. 494385.

Toro Part Number Index

Part No.	Page No.	Ref. No.	Qty.	Description
7227	12	11:3	2	Bulb – Light
104047	6	3:1	1	Bushing
104048	6	3:2	1	Fuel Valve Assembly
111419	4	12	1	Washer–Bearing
111686	12	11:2	2	Socket Assembly
114621	3	24	1	Decal–Noise (Only On: 71218)
116397	12	22	1	Relay
614249	2	38	1	Tie Strap
701178	1	1	2	Cap–Protector
702366	12	6	1	Clip–Wire Retainer
702366	12	21	2	Clip–Wire Retainer
936109	14	36	1	Ring – Retaining
9266714	2	36	2	Screw–HWHTF
9266714	6	17	2	Screw–HWHTF
9266714	6	37	1	Screw–HWHTF
9266714	12	9	2	Screw–HWHTF
9266714	12	13	1	Screw–HWHTF
9267154	6	8	1	Screw
3–6498	4	21	2	Washer–Thrust
3–6498	4	38	4	Washer–Thrust
3–6498	5	17	1	Washer–Thrust
3–6498	5	22	1	Washer–Thrust
3–6498	8	7	2	Washer–Thrust
3–7501	5	11	4	Washer–Curved
5–4460	16	43	1	Washer – Fender
5–4460	3	4	1	Washer–Fender
5–4460	4	17	1	Washer–Fender
5–4460	6	9	4	Washer–Fender
5–4460	7	35	1	Washer–Fender
5–4460	9	20	2	Washer–Fender
7–0030	11	11	2	Shoulder Bolt
7–0030	11	18	1	Shoulder Bolt
7–0036	8	3	2	Key–Square
23–0310	10	8	1	Shoulder Bolt
26–0671	6	12	1	Bolt–Blade
26–6701	9	15	1	Spring – Extension
27–0220	5	15	2	Screw–Special HWH
27–0220	6	2	2	Screw–Special HWH
27–0220	6	19	2	Screw–Special HWH
27–8890	7	1	1	Spring – Pedal Return
28–0540	2	6	2	Bolt–Shoulder
28–2480	4	28	2	Washer–Flat
28–2480	8	4	2	Washer–Flat
28–8080	12	1	1	Boot–Battery Terminal
37–8770	3	1	2	Bolt–Shldr
37–8770	3	2	2	Bolt–Shldr
37–8770	7	31	1	Bolt–Shldr
37–8771	10	15	1	Bolt–Shoulder
38–1420	12	5	1	Switch–Seat
44–8110	12	4	1	Battery Cable –Neg
46–8090	2	13	4	Screw–Tapping
46–8090	2	17	3	Screw–Tapping
46–8090	10	5	2	Screw–Tapping
46–8091	2	3	2	Screw–Tapping
46–8091	2	10	1	Screw–Tapping
47–2963	6	4	1	Fuel Line
48–7620	9	3	1	Screw
52–2891	4	11	1	Bushing – Steering Links
56–2540	12	29	1	Tube–Vent Use w/80–2600
61–9780	4	26	2	Hubcap
61–9780	8	6	2	Hubcap
63–8360	12	25	1	Key–Ignition

*Not Illustrated

Toro Part Number Index (cont.)

Part No.	Page No.	Ref. No.	Qty.	Description
65-2920	7	20	1	Pad-Pedal
65-5080	9	22	1	Bushing - Flanged
65-7210	11	23	1	Spacer
66-0120	6	1:1	1	Knob
76-1340	1	32	1	Decal-USA (Only On: 71196)
80-2240	12	31	1	Plate-Name Grille
80-2600	12	3	1	Battery - 7 Plate
80-6090	9	28	1	Key-Square
80-6990	11	8	2	Washer-Hardened
86-4270	14	103	1	Spacer
86-4270	9	11:4	1	Spacer - Lock
88-0890	4	37	1	Grip - Parking Brake
88-3840	1	28	1	Body - Rear
88-3880	6	3	1	Gas Tank Assembly
88-3940-03	1	5	1	Panel - Rear
88-3960	12	12	1	Lense - Headlights
88-3970	12	11	1	Reflector-Lamp
88-3980	6	27	1	Gas Cap ASM
88-4040	12	30	1	Battery Box
88-4070	4	29:2	2	Tire 15x6.00-6
88-4140	2	23	2	Nut - Wedge
88-4160	2	24	2	Clamp - Pivot Rod
88-4170	2	20	1	Rod - Pivot
88-4180	5	5	1	Button - Release
88-4190	5	4	1	Bushing - Sliding
88-4210	5	19	1	Bushing - Stationary
88-4230	11	13	2	Trunnion - HOC
88-4280	4	29	2	Front Wheel & Tire ASM
88-4320	12	18	1	Harness-Wire
88-4340	6	1	1	Throttle Control ASM
88-4350	6	26	1	Cable ASM-Throttle
88-4370	4	29:1	2	Rim ASM-15" Front
88-4390	8	2:2	2	Rim ASM - 18" Rear
88-4400	4	29:4	2	Bearing - Wheel
88-4410	6	18	1	Gasket - Muffler
88-4490	6	42	1	Reducer - Throttle Rpm (Only On: 71218)
88-4620-03	1	11	1	Bracket - Idler Pivot
88-4630-03	1	24	1	Plate - Engine Mounting
88-4670	4	9	1	Bushing - Eccentric
88-4690	10	7	1	Block - Pivot
88-4730	11	16	2	Clamp - HOC Pivot
88-4810	7	13	1	Clamp - Shift Pivot
88-4820-03	3	11	2	Bracket - Seat Hinge
88-4880	12	17	1	Spacer - Microswitch
88-4890	5	10	1	Spring - Leaf
88-4910-03	3	3	1	Support - Seat
88-4990	3	23	1	Tray - Fender
88-5000-03	7	21	1	Pedal - Clutch/Brake
88-5010	4	7	1	Spacer - Steering Rack
88-5030-03	3	9	1	Gate - HOC
88-5130-03	4	5	1	Bracket - Steering Rack
88-5150	5	16	1	Bushing - Flange
88-5170	3	7	1	Cover - HOC (Only On: 71196)
88-5180-01	5	8	1	Bracket - Backup
88-5190-03	2	25	1	Lever W.a. - Deck Engage
88-5200	4	10	1	Steering Rack W.a.
88-5230	3	17	1	Foot Mat - RH
88-5240	3	16	1	Foot Mat
88-5270	7	29	1	Rod - Clutch/Brake
88-5360	8	1	2	Spacer - Pulley
88-5450	11	12	2	Rod - Hanger
88-5470	4	23	2	Spacer - Front Axle

*Not Illustrated

Toro Part Number Index (cont.)

Part No.	Page No.	Ref. No.	Qty.	Description
88-5500	7	15	1	Rod - Pedal Pivot
88-5510	4	35	1	Rod-Parking Brake
88-5520-03	4	36	1	Bracket-Parking Brake
88-5560	7	32	1	Belt Guide - Idler
88-5570-03	11	6	4	Link-Adjusting HOC
88-5610	10	14	2	Lever - Neutral Return
88-5680	7	33	1	Idler Pulley
88-6040-03	2	18	1	Bracket - Hinge
88-6050-03	2	7	1	Bracket - Hinge
88-6070	7	30	1	Arm - Idler
88-6090	5	20	1	Coupling - Steering
88-6140	7	2	1	Spring - Brake
88-6220	1	4	2	Spring - Compression
88-6300	5	13	1	Shaft - Steering
88-6330	7	7	1	Spring - Extension
88-6370	5	14	1	Shaft W.a. - Steering
88-9830	12	24	1	Switch-Ignition
88-9932	12	19	2	Switch - Micro
92-2460	2	30	1	Decal - Ignition/Lights (Only On: 71196)
92-2461	2	31	1	Decal - Throttle (Only On: 71196)
92-2462	2	32	1	Decal - Deck Engage (Only On: 71196)
92-5730	2	31	1	Decal - Throttle (Only On: 71218)
92-5731	2	30	1	Decal-Ign/Lights (Only On: 71218)
92-5748	2	14:1	1	Decal - Air Duct
92-5782	2	15	1	Patch - Heat Tape
92-6511	3	25	1	Seat
92-6544	14	15	1	Seal - Lip
92-6545	14	24	1	Seal - Lip
92-6547	14	35	1	Arm - Bypass
92-6549	16	38	1	Pin - Actuating
92-7305	10	11	1	Spring - Extension
92-7889-03	4	30	1	Spindle Wa-RH
92-8650	2	14	1	Hood-Toro
92-8856	9	8	1	Wire - Bypass
92-8857	9	26	1	Lever - Bypass
92-8875	12	26	1	Switch-Rocker
92-9674	3	5	1	Knob-Studded
92-9845	12	8	1	Solenoid
93-0303	2	1	1	Tower-Steering Toro
93-0323	8	2:1	2	Tire - 20x10-8
93-0539	12	15	4	Screw-PPH
93-3240	12	20	1	Seal-Plunger
93-3807	16	134	1	Nut - Castle
93-3808	11	17	1	Spring - Extension
93-3809	6	31	1	Bracket-Ground
93-3810	12	23	1	Wire Harness
93-3811	8	2	2	Rear Wheel & Tir ASM
93-3812	10	9	1	Pedal - Speed Control
93-3822-03	11	1	1	Lever-HOC
93-3831-03	1	38	1	Support - Rear
93-3832	6	11	1	Pulley - Engine (44")
93-3833-03	4	18	1	Spindle Wa-LH
93-3840	4	34	1	Link - Drag
93-3849	2	37	1	Brkt-Cable
93-3854	6	7	3	Belt Guide - Engine
93-3855	6	22	1	Belt Guide - R.h.
93-3856-03	1	36	1	Bracket-Trans Mtg RH
93-3857-03	1	10	1	Bracket-Trans Mtg LH
93-3861	16	37	1	Lever - Brake
93-3862	9	7	1	Pulley-Transmission
93-3863-03	9	21	1	Bracket - Speed Control
93-3864	2	16	1	Shield - Heat

*Not Illustrated

Toro Part Number Index (cont.)

Part No.	Page No.	Ref. No.	Qty.	Description
93-3867	9	5	1	Fan – Hydro (7" – 10bld)
93-3868	9	17	2	Belt Guide – Trans
93-3870	14	100	1	Control Arm
93-3870	9	11:3	1	Lever – Speed Control
93-3872	9	9	1	Strap – Torque
93-3873	4	32	1	Tie Rod Assy
93-3874	10	18	1	Link – Speed/Direct Ctrl
93-3875	10	16	1	Bellcrank
93-3877	10	13	1	Rod – Speed Control
93-3880-03	6	32	1	Shield – Muffler
93-3882	6	34	1	Clip – Tinnerman
93-3883	9	18	1	V – Belt
93-3885	11	3	1	Tube Wa
93-3888	11	10	1	Link – HOC
93-3891	2	12	1	Duct – Hood Air
93-3892	6	15	1	Muffler W.a.
93-3893	8	2:4	2	Tube – Inner 20x10-8
93-6668	17	2	1	Decal – Battery Charge Inst.
93-6673	2	32	1	Decal – Deck Engage (Only On: 71218)
93-6676	1	33	1	Decal – Instruction (Only On: 71218)
93-6678	1	31	1	Decal – Dump Valve
93-7276	17	1	1	Decal – Danger
93-7657	3	7	1	Cover – HOC (Only On: 71218)
93-7660-03	11	22	1	Pivot W.a. (HOC)
93-8450-03	6	33	1	Exhaust Shield Wa
93-8741	12	11:1	1	Reflector – Headlight
93-9354	17	4	1	Decal – Battery
93-9911	6	40	1	Arrestor – Spark
94-1238	1	33	1	Decal – Instruction (Only On: 71196)
94-1900	16	1	1	Housing – Lower
94-1902	14	4	1	Ring – Wire Retaining
94-1903	14	5	1	Ring – Retaining
94-1904	14	6	1	Bearing – Shaft Ball
94-1905	14	7	2	Bearing – Cradle
94-1907	14	9	1	Swashplate – Variable
94-1908	14	13	1	Block – Cylinder ASM
94-1909	14	14	1	Arm – Trunion
94-1910	14	17	1	Guide – Slot
94-1913	16	23	1	Block – Cylinder ASM
94-1914	16	25	1	Actuator – Bypass
94-1915	16	26	1	Centersection ASM
94-1916	16	27	1	Seal – Lip
94-1917	16	28	1	Ring – Retaining
94-1918	16	29	2	Washer
94-1919	16	41	4	Bolt Rotor/Starter Kit
94-1920	16	34	1	Oil Filter Element
94-1923	16	39	1	Bolt
94-1924	15	53	2	Seal
94-1925	14	56	1	Shaft – Input
94-1926	16	58	21	Bolt
94-1927	16	59	2	Pin
94-1930	16	83	1	Jackshaft/Pinion Gear ASM
94-1932	16	88	2	Capscrew
94-1933	16	89	2	Washer
94-1934	15	90	2	Sleeve – Bearing
94-1935	15	91	2	Seal – Wiper
94-1936	14	92	1	Spring – Block
94-1937	14	93	1	Washer – Block Thrust
94-1943	15	52	2	Washer
94-1945	9	29	1	ASM – Breather Hose
94-1951	6	44	1	Latch – Hood
94-1952	6	24	1	Rod – Gas Tank

*Not Illustrated

Toro Part Number Index (cont.)

Part No.	Page No.	Ref. No.	Qty.	Description
94-1980	2	39	2	Foam-Hood
94-1984	2	11	1	Pin-Latch
94-1990-03	4	31	1	Front Axle Wa
94-1998-03	1	25	1	Frame Rail-RH
94-1999-03	1	13	1	Frame Rail-LH
94-3526	6	29	1	Decal-Engine
94-3528	2	29	2	Decal-Tower
94-4292	2	35	1	Cable - Deck Engage
94-4909	3	25:1	1	Trim - Seat
94-5362	12	33	1	Boot-Terminal Insulator
94-5565	2	2	1	Knob - Control
94-5565	11	24	1	Knob - Control
94-6543	14	3	1	Seal - Lip
94-6922	14	8	1	Bearing - Thrust
94-6923	16	19	1	Bearing - Thrust
94-6925	16	30	1	Bypass Plate
94-6926	16	57	3	Bolt
94-6955	16	18	1	Shaft - Motor
94-6956	16	85	1	Jackshaft
95-0807	2	34	1	Decal - Hood Right
95-0808	2	33	1	Decal - Hood Left
95-0809	1	35	1	Decal-Rear Body
95-2727	9	11	1	Transaxle ASM - Hydro
95-3268	14	2	1	Housing ASM - Upper
95-3269	15	44	1	Differential ASM
95-3876	1	21	1	Support - Front Axle
98-1459	5	23	1	Decal-Toro
98-1468	5	1:2	1	Cover - Steering Wheel
98-1469	5	1	1	Steering Wheel
218-461	12	24:2	1	Nut - HH
218-560	17	3	6	Cap - Battery
218-578	13	1	3	Fuse-10 Amp
232-27	4	29:3	2	Valve Stem & Cap Assembly
232-27	8	2:3	2	Valve Stem & Cap Assembly
232-39	4	29:6	2	Tube - Inner 15x6-6
2412-98	6	5	2	Clamp-Hose
302-5	4	29:5	2	Fitting - Grease
302-26	4	8	1	Fitting-Grease
321-2	2	5	4	Screw-HH
321-4	5	7	2	Screw-HH
321-4	12	2	2	Screw-HH
321-9	5	21	2	Screw-HH
322-3	1	7	4	Screw-HH
322-3	1	9	4	Screw-HH
322-3	1	20	6	Screw-HH
322-3	1	23	2	Screw-HH
322-3	1	26	4	Screw-HH
322-3	1	27	2	Screw-HH
322-3	2	28	2	Screw-HH
322-3	3	10	4	Screw-HH
322-3	6	39	1	Screw-HH
322-3	7	14	2	Screw-HH
322-3	9	16	1	Screw-HH
322-3	11	19	4	Screw-HH
322-5	1	2	2	Screw-HH
322-5	6	10	2	Screw-HH
322-5	9	19	2	Screw-HH
322-9	6	6	3	Screw-HH
322-12	9	32	4	Screw HH
322-39	11	2	1	Screw-HH
323-11	7	34	1	Screw
323-13	4	2	2	Screw-HH

*Not Illustrated

Toro Part Number Index (cont.)

Part No.	Page No.	Ref. No.	Qty.	Description
3218-2	11	25	1	Nut-Hex Jam
3230-1	4	6	4	Bolt-CARR
3230-3	4	4	1	Screw-CARR
3230-3	7	22	1	Screw-CARR
3230-5	9	23	1	Bolt-Carriage
3230-7	9	24	1	Bolt-Carriage
3231-4	4	3	1	Bolt-CARR
3253-4	6	21	2	Washer-Lock
3253-4	6	38	1	Washer-Lock
3253-22	6	13	1	Washer-Lock
3254-5	12	24:1	1	Washer - Lock
3255-7	12	14	1	Washer-Lock
3255-8	6	36	1	Washer-Lock
3256-22	5	6	2	Washer-Flat
3256-22	9	25	1	Washer-Flat
3256-22	10	6	2	Washer-Flat
3256-23	1	3	2	Washer-Flat
3256-23	1	22	2	Washer-Flat
3256-23	2	27	2	Washer-Flat
3256-23	7	23	1	Washer-Flat
3256-23	9	14	3	Washer-Flat
3256-23	9	33	4	Washer-Flat
3256-24	2	21	2	Washer-Flat
3256-24	4	24	2	Washer-Flat
3256-24	11	5	2	Washer-Flat
3256-25	4	13	1	Washer-Flt
3256-25	6	14	1	Washer-Flt
3256-26	7	18	1	Washer-Flt
3256-38	10	2	4	Washer-Flat
3256-58	9	4	1	Washer-Flt
3269-26	3	13	2	Washer
3272-7	16	135	1	Pin - Cotter
3272-10	4	14	1	Pin-Cotter
3272-10	7	24	1	Pin-Cotter
3272-12	4	27	2	Pin-Cotter
3274-10	6	20	2	Screw-Sckt Hd
3274-59	14	101	1	Screw - Cap Socket Hd.
3274-59	9	11:5	1	Screw - HSH
3290-282	3	8	2	Pop Rivet
3290-299	12	32	1	Nut - Tinnerman
3290-307	2	19	2	Pin-Cotter
3290-307	9	1	1	Pin-Cotter
3290-307	10	1	4	Pin-Cotter
3290-307	11	4	1	Pin-Cotter
3290-307	11	7	2	Pin-Cotter
3290-354	12	16	2	Nut-Speed
3290-456	10	17	1	Washer-Lock
3290-479	3	6	4	Fastener-Panel
3290-479	3	15	12	Fastener-Panel
3290-496	2	8	2	Nut - Retained
3296-5	4	20	3	Nut-Lock
3296-12	14	102	1	Nut
3296-12	9	11:6	1	Nut - Lock
3296-20	16	140	1	Nut - Lock Insert
3296-29	1	6	2	Nut-Lock
3296-29	1	8	4	Nut-Lock
3296-29	1	12	4	Nut-Lock
3296-29	1	14	2	Nut-Lock
3296-29	1	15	6	Nut-Lock
3296-29	1	16	2	Nut-Lock
3296-29	1	29	4	Nut-Lock
3296-29	2	26	2	Nut-Lock

*Not Illustrated

Toro Part Number Index (cont.)

Part No.	Page No.	Ref. No.	Qty.	Description
3296-29	3	12	6	Nut-Lock
3296-29	4	1	4	Nut-Lock
3296-29	4	16	1	Nut-Lock
3296-29	6	16	2	Nut-Lock
3296-29	6	25	2	Nut-Lock
3296-29	7	19	1	Nut-Lock
3296-29	7	26	2	Nut-Lock
3296-29	7	27	1	Nut-Lock
3296-29	9	10	2	Nut-Lock
3296-29	9	13	5	Nut-Lock
3296-29	9	27	4	Nut-Lock
3296-29	11	14	4	Nut-Lock
3296-29	11	15	2	Nut-Lock
3296-29	11	20	1	Nut-Lock
3296-29	11	21	1	Nut-Lock
3296-39	4	15	1	Nut-Lock
3296-39	4	25	2	Nut-Lock
3296-42	2	4	4	Nut-Lock
3296-42	5	9	2	Nut-Lock
3296-42	5	12	2	Nut-Lock
3296-47	10	19	1	Nut-Lock
3296-59	7	28	2	Nut-Lock
3296-59	10	10	1	Nut-Lock
32103-22	12	28	2	Nut-Wing
32104-76	6	35	2	Screw-Self TAP
32121-111	5	2	1	Pin-Spiral
32128-43	2	22	2	Nut-Flange
32144-32	12	10	2	Screw-Plastic
32144-42	6	41	1	Screw-HH TAP
32144-112	6	43	2	Screw-Thd Form
32149-1	6	23	2	Nut-Keps
32149-2	12	7	3	Nut-Hex Lock
32151-48	4	33	2	Ring-Retaining
32151-48	5	18	1	Ring-Retaining
32151-48	8	5	2	Ring-Retaining
32151-81	5	3	1	Retaining Ring Push-On
32151-83	10	12	1	Ring-Retaining