



GeoLink® Precision Spray System

Multi Pro® 5800 Turf Sprayer

Model No. 41623

Form No. 3397-442 Rev B

Quick Start Guide

Contact Toro NSN at 1-844-GeoLink (1-844-436-5465) or NSNTech@toro.com for customer service.

Note: When you turn on the display for the first time, it is in standard mode. Ensure the machine is stopped while changing the display and configuration.

Using the Touch Screen

Sprayer information is added to the screen when you touch and enable the individual icons.

- Select any icon on the screen to display what is shown on the screen.
- Press on an icon to change it, and further options will display.
- Select the options as required and confirm the new display (Figure 1).



Figure 1

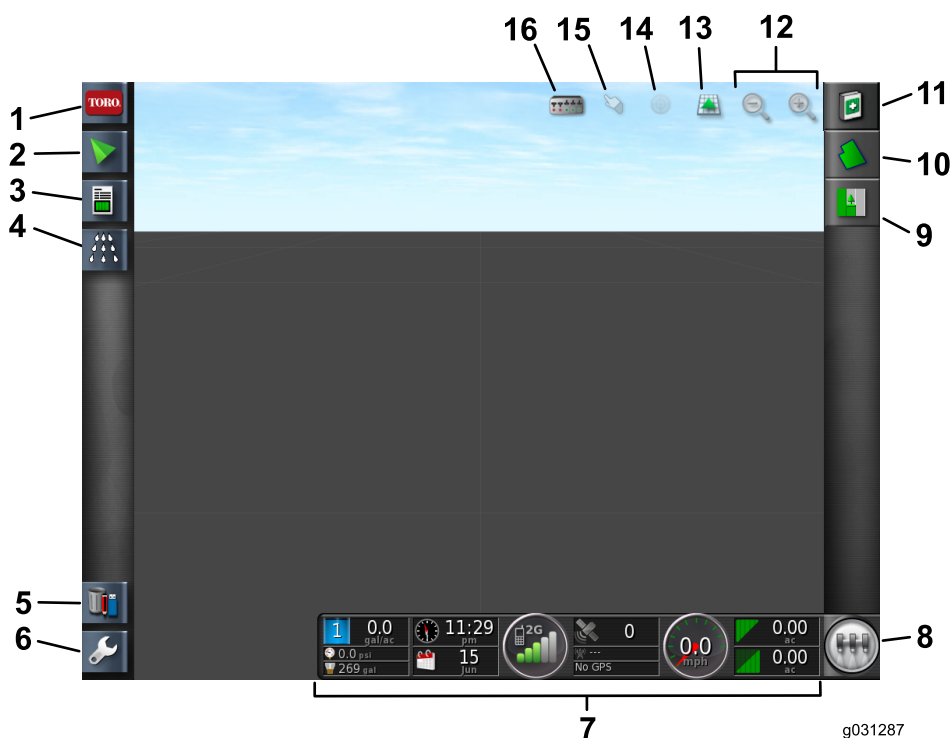


Figure 2

Easy-mode screen

- | | | | |
|----------------------------|---------------------------|------------------------|-----------------------------|
| 1. System-information icon | 5. Inventory-manager icon | 9. Job-menu icon | 13. Screen-view icon |
| 2. Guidance icon | 6. Setup icon | 10. Field-menu icon | 14. Center-map view |
| 3. Job-information icon | 7. Sprayer dashboard | 11. Job-assistant icon | 15. Boundary-selection icon |
| 4. Sprayer-controller icon | 8. Master-switch icon | 12. Zoom-function icon | 16. Boom-display icon |



Entering a Product and Tank Volume

1. Select the sprayer-controller icon.
2. Expand the sprayer-controller panel.
3. Select the product title, finish the wizard for rate, and confirm (Figure 3).

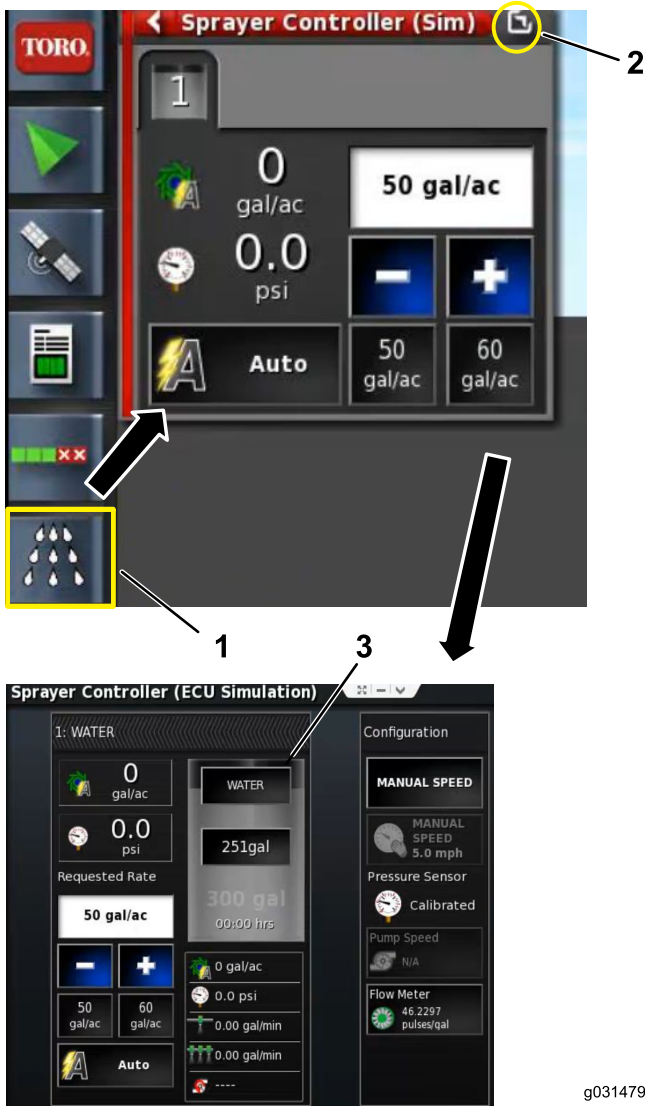


Figure 3

1. Sprayer-controller icon
2. Expand icon
3. Select the product and finish the rate wizard

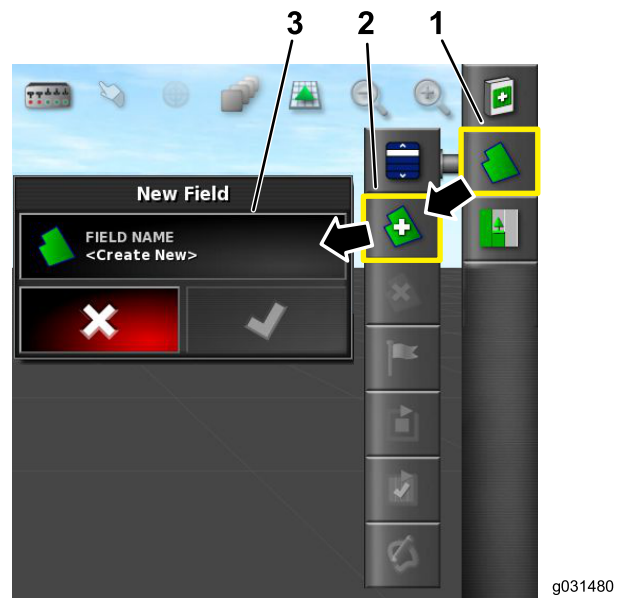


Figure 4

1. Field-menu icon
2. New-field icon
3. Field name

Creating New Field Boundaries in Standard Mode

Note: Ensure that the display is in standard mode to create boundaries.

Note: Ensure the units are correct for your use. Refer to Selecting the Correct Units of Measure in the *Operator's Manual*.

Creating a New Field Boundary using Vehicle-Position Tracking

The boundary is created at the outside of the front, left tire.

1. Drive to the area.
2. Select the field-menu icon.
3. Select the record-field boundary icon.

Creating a Field

Note: It is recommended to create one field per course with all field boundaries for that course under that field.

1. Select the field-menu icon.
2. Select the new-field icon.
3. Select the field name, name the field, and confirm (Figure 4).

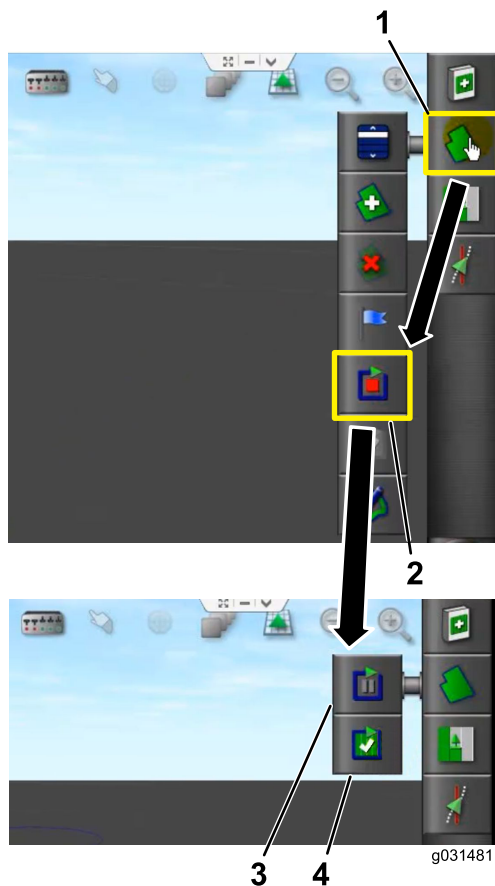


Figure 5

1. Field-menu icon
2. Record-field boundary icon
3. Pause field-boundary recording icon
4. Complete field-boundary recording icon

4. When you are close to the beginning, select the complete boundary icon.

Creating a New Field Boundary while Spraying

Note: This procedure is used with WAAS or with WAAS plus RTK corrections.

The boundary is created at the outside nozzle that is spraying.

Refer to the Creating a Field Boundary from Spraying video in the folder on the thumb drive.

1. Drive to the area that is to be mapped.
2. Select the auto-section control icon.
3. Changed the boundary limit to unlimited.
4. Select the job-menu icon.
5. Select the new job icon.
6. Name the new job.
7. Turn on master switch icon and spray area to be mapped.

8. When finished spraying border, select the create boundary from coverage icon.
9. To only spray within the border, select the auto-section control icon and change the boundary limit to field boundaries.

Naming and Categorizing a Field Boundary

1. After creating a boundary, hold your finger on the boundary line.
2. When the boundary line is highlighted, remove your finger from the screen and the properties menu will open.
3. Select the different properties you want to change, input the information, and confirm.

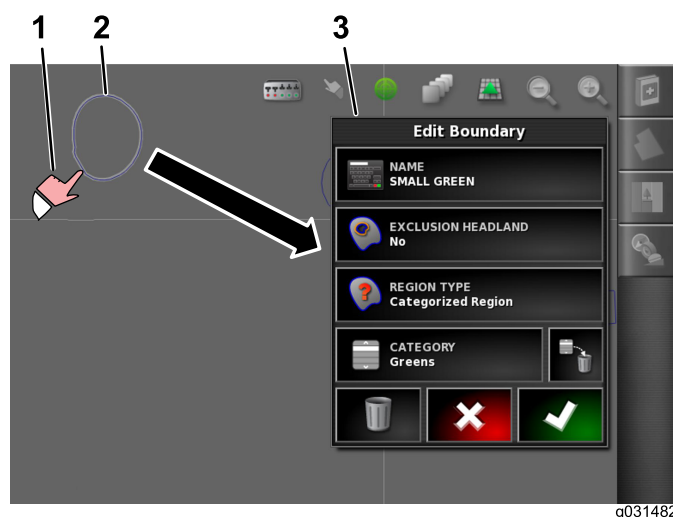


Figure 6

1. Select the boundary with your finger
2. Boundary
3. Boundary properties

Using the Easy Mode with a New Job

1. Switch the display to easy mode.
2. Start the machine and keep the key in the run mode.
3. Open the sprayer-controller icon (Figure 7).
4. In the sprayer-controller screen, determine if the correct rate (gal/ac) is selected.
5. If the rate is not correct, change the rate with the preset rates, incrementally, or select the current rate box to manually enter an application rate.(Figure 7).

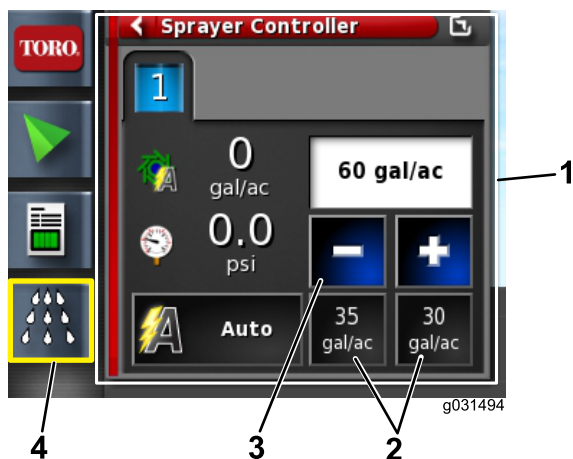


Figure 7

1. Current rate
2. Preset-rate icons
3. Decrease and increase icons
4. Sprayer-controller icon

6. Select the job-menu icon in the upper right of the screen.
7. Enter a new name for the job or leave the default time stamp (Figure 8).



Figure 8

1. Job-menu icon
2. Enter a new name or use the default time stamp

8. Open the job-menu icon.
9. Select the work region you are going to spray (i.e. fairways, greens, tees, etc.) (Figure 9).



Figure 9

1. Job-menu icon
2. Configure-job regions icon
3. Select the job region

10. Select the excluded regions that are not to be sprayed (bunkers, trees, hazards, etc.)

Note: Refer to the standard mode videos for spraying a boundary inside another boundary.

11. Turn the section switches (located between the seats) to the ON position (Figure 10).

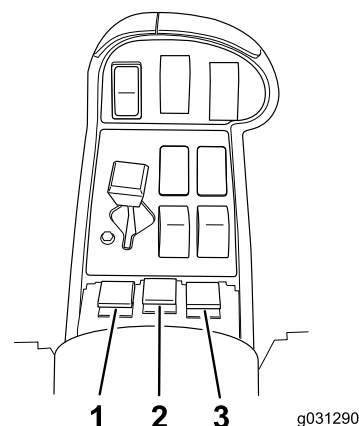


Figure 10

1. Boom switch, left boom
2. Boom switch, center boom
3. Boom switch, right boom

12. To start spraying, turn on the master-switch icon (the master-switch turns green) and drive into the spray area (Figure 2).

Note: The machine starts spraying when the sprayer crosses into the correct spray area.

Note: The display shows areas to be sprayed with light gray and non-spray areas with a dark gray. If the display shows all light gray, every area can be sprayed.

Note: The display, receiver, and section controller will power down when the machine key is turned to the OFF position. A power switch (green) for the display is located on the back, left side of the console.