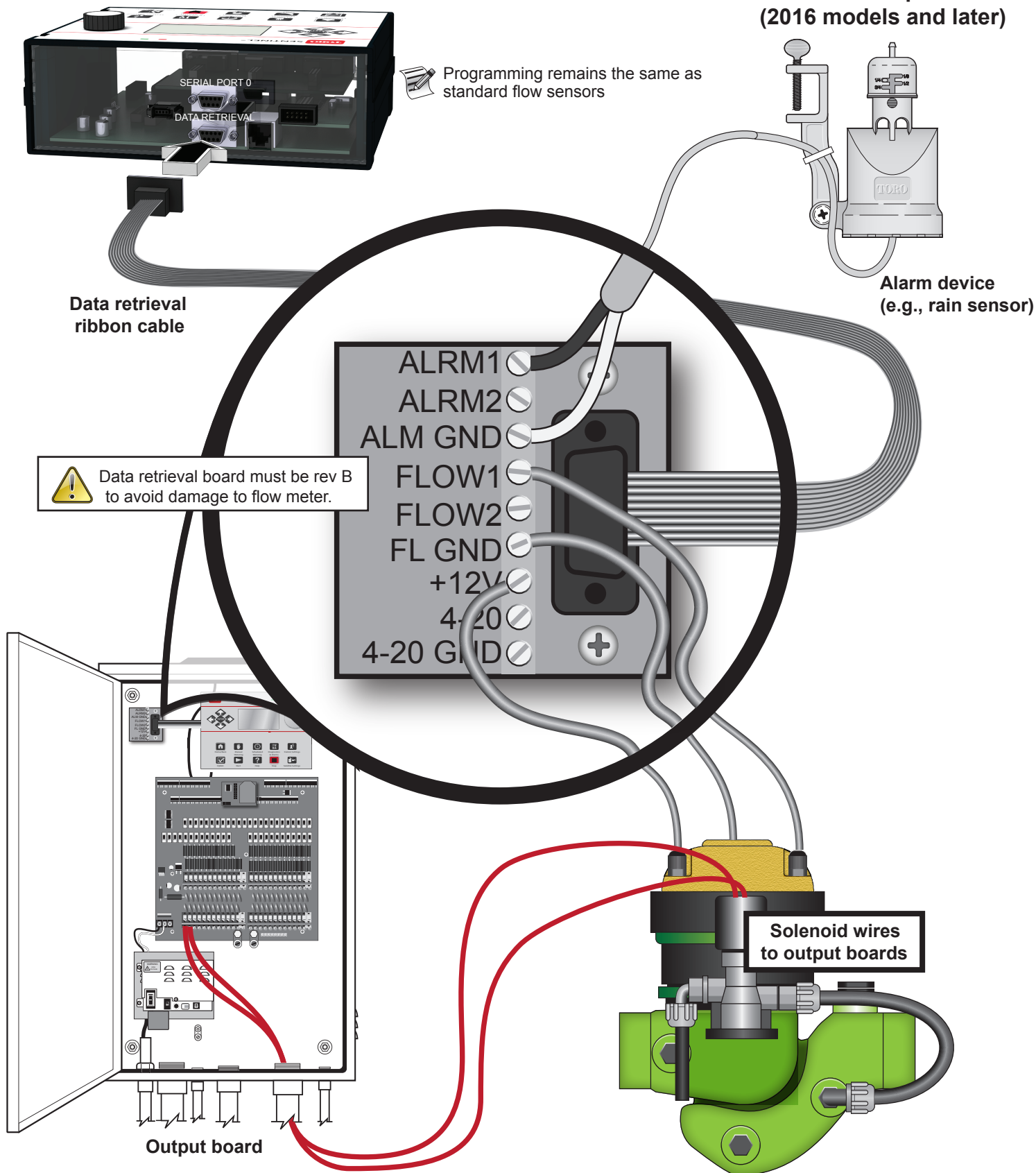


**TORO**

Count on it.

# Connecting Photo Diode Flow Meters to Sentinel

With Data Retrieval Board or Wireless Output Board  
(2016 models and later)



Only Rev B data retrieval boards and wireless output boards (2016 or later) have power for the photo diode flow meter. Refer to the following page for alternate configuration for older models.

**With direct wire connection on the V3 control module  
(2015 models and earlier)**

